

Diagnostic accuracy of optical coherence tomography in the assessment of in vivo primary basal cell carcinoma resection margins prior to Mohs Micrographic Surgery

Citation for published version (APA):

Adan, F., Kallen, E. J. J., Dermont, G., Muche, J. M., Sinx, K. A. E., Schilder, A., Hamid, M. A., Nelemans, P. J., & Mosterd, K. (2022). Diagnostic accuracy of optical coherence tomography in the assessment of in vivo primary basal cell carcinoma resection margins prior to Mohs Micrographic Surgery. *Journal of the European Academy of Dermatology and Venereology*, 36(4), E270-E272. <https://doi.org/10.1111/jdv.17804>

Document status and date:

Published: 01/04/2022

DOI:

[10.1111/jdv.17804](https://doi.org/10.1111/jdv.17804)

Document Version:

Publisher's PDF, also known as Version of record

Document license:

Taverne

Please check the document version of this publication:

- A submitted manuscript is the version of the article upon submission and before peer-review. There can be important differences between the submitted version and the official published version of record. People interested in the research are advised to contact the author for the final version of the publication, or visit the DOI to the publisher's website.
- The final author version and the galley proof are versions of the publication after peer review.
- The final published version features the final layout of the paper including the volume, issue and page numbers.

[Link to publication](#)

General rights

Copyright and moral rights for the publications made accessible in the public portal are retained by the authors and/or other copyright owners and it is a condition of accessing publications that users recognise and abide by the legal requirements associated with these rights.

- Users may download and print one copy of any publication from the public portal for the purpose of private study or research.
- You may not further distribute the material or use it for any profit-making activity or commercial gain
- You may freely distribute the URL identifying the publication in the public portal.

If the publication is distributed under the terms of Article 25fa of the Dutch Copyright Act, indicated by the "Taverne" license above, please follow below link for the End User Agreement:

www.umlib.nl/taverne-license

Take down policy

If you believe that this document breaches copyright please contact us at:

repository@maastrichtuniversity.nl

providing details and we will investigate your claim.

Download date: 02 Jun. 2023

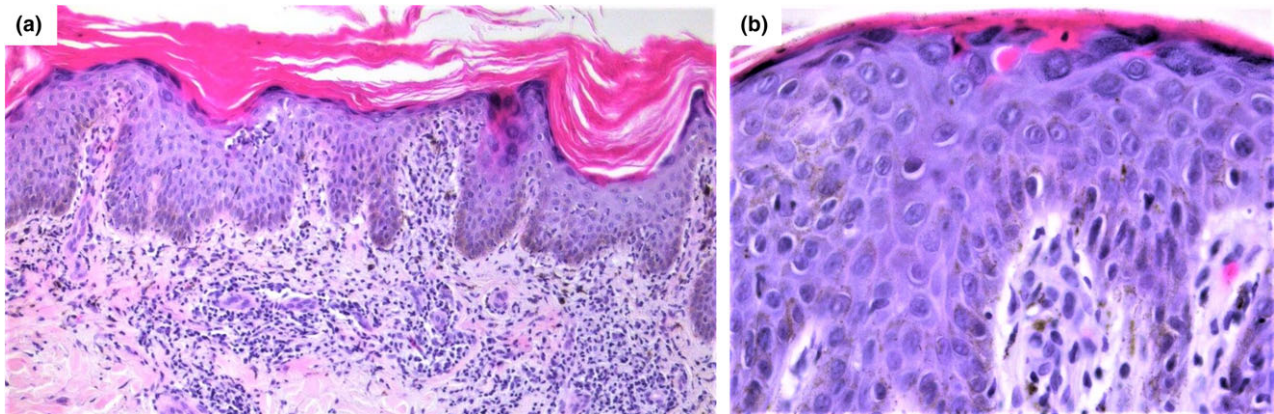


Figure 2 (a, b) Lichenoid drug eruption, histopathological features: (a) Irregular acanthosis, compact hyperkeratosis, focal parakeratosis, and band-like lymphocytic infiltrate at the superficial dermis (hematoxylin and eosin; $\times 100$); (b) Colloid bodies at the epidermis and dermal melanophages at the superficial dermis (hematoxylin and eosin; $\times 400$).

As such, we describe a disseminated lichenoid eruption after the Oxford–AstraZeneca COVID-19 vaccine to broaden the knowledge about adverse cutaneous reactions to this vaccine. Nevertheless, this adverse event should not discourage vaccination against such a life-threatening virus.

Acknowledgement

The patients in this manuscript have given written informed consent to publication of their case details.

Conflicts of interest

The authors have no conflict of interest to declare.

Funding source

This article has no funding source.

Data availability statement

Data sharing is not applicable to this article as no new data were created or analyzed in this study.

C. Correia,^{1,*} S. Fernandes,¹
L. Soares-de-Almeida,^{1,2} P. Filipe^{1,2}

¹Dermatology Department, Hospital de Santa Maria, Centro Hospitalar Universitário Lisboa Norte (CHULN), Lisbon, Portugal, ²Dermatology University Clinic, Faculty of Medicine, University of Lisbon, Lisbon, Portugal

*Correspondence: C. Correia. E-mail: catarinacorreia03@gmail.com

References

- Català A, Muñoz-Santos C, Galván-Casas C *et al*. Cutaneous reactions after SARS-CoV-2 vaccination: a cross-sectional Spanish nationwide study of 405 cases. *Br J Dermatol* 2022; **186**: 142–152.
- Merhy R, Sarkis AS, Kaikati J *et al*. New-onset cutaneous lichen planus triggered by COVID-19 vaccination. *J Eur Acad Dermatol Venereol* 2021; **35**: e729–e730.

- McMahon DE, Kovarik CL, Damsky W *et al*. Clinical and pathologic correlation of cutaneous COVID-19 vaccine reactions including V-REPP: a registry-based study. *J Am Acad Dermatol* 2022; **86**: 113–121.
- Sun Q, Fathy R, McMahon DE, Freeman EE. COVID-19 vaccines and the skin: the landscape of cutaneous vaccine reactions worldwide. *Dermatol Clin* 2021; **39**: 653–673.
- Hiltun I, Sarriugarte J, Martínez-de-Espronedea I *et al*. Lichen planus arising after COVID-19 vaccination. *J Eur Acad Dermatol Venereol* 2021; **35**: e414–e415.
- Lai YC, Yew YW. Lichen planus and lichenoid drug eruption after vaccination. *Cutis* 2017; **100**: e6–e20.
- Sidikov A, Zaslavsky D, Sadykov A *et al*. The new differential diagnostic test for the lichenoid drug eruption. *Dermatol Ther* 2020; **33**: e13784.

DOI: 10.1111/jdv.17872

LETTERS TO THE EDITOR

Diagnostic accuracy of optical coherence tomography in the assessment of *in vivo* primary basal cell carcinoma resection margins prior to Mohs Micrographic Surgery

Dear Editor,

The diagnostic accuracy of optical coherence tomography (OCT) for *in vivo* assessment of resection margins of basal cell carcinoma (BCC) prior to Mohs Micrographic Surgery (MMS) remains unknown.¹ Therefore, we conducted a multicentre, case-control study with the objective to estimate sensitivity and specificity values.

Included were patients with a biopsy-proven primary BCC and an indication for MMS,² who visited the dermatology outpatient clinic of Maastricht University Medical Centre+ or Mohs Klinieken in Hoorn, The Netherlands. OCT scans of BCCs were obtained prior to MMS. A random sample of quadrants of these OCT scans was evaluated independently by two observers. The random sample consisted of BCC quadrants, which according to histopathological examination contained tumour tissue in resection margins (cases) as well as BCC quadrants free from tumour tissue in resection margins (controls). An ultimate diagnosis on whether tumour tissue was visible on OCT was reached by consensus.

A total of 194 quadrants (92 cases and 102 controls) were included for analysis. Table 1 shows the trade-off between sensitivity and specificity. When confidence scores 2–4 were defined as a positive OCT result, tumour was visible with OCT in 58/92 cases, corresponding with a sensitivity of 63.0% (95% CI: 55.1–

70.6). In 54/102 controls, no tumour tissue was visible with OCT, corresponding with a specificity of 52.9% (95% CI: 45.8–59.7). A few small-sized studies showed more favourable results with respect to the ability of OCT to correctly predict resection margins; however, sensitivity and specificity were not reported.^{1,3–5}

When OCT is used to correctly predict resection margins, the periphery of a tumour is scanned and only minimal presence of tumour tissue has to be discovered, which may be an explanation for the low sensitivity. The low specificity and consequently high number of false-positive OCT results may be due to misinterpretation of sebaceous glands for nodular tumour nests (Fig. 1b) and vessels for infiltrative tumour nests. Sebaceous glands are abundant on the nose, and in our study, 39.7% of the included BCCs were located on the nose. The penetration depth of the OCT device (up to 1.5 mm) might also limit an accurate assessment. Furthermore, the mean depth of aggressive and nodular BCCs in the head and neck area is 1.5 and 1.7 mm, respectively, and the penetration depth might not be sufficient to detect deeper located BCC nests (Fig. 1a).⁶ This might not be a problem when OCT is used for diagnosis of BCC, as BCCs contain more superficially located nests in the centre of the tumour.⁷ However, for margin assessment, only peripheral borders of tumours are scanned. If only deeper located nests are present there, these are invisible on OCT images. Another explanation for the high number of false-negative OCT results can be that OCT images are obtained in a perpendicular fashion with a 90° angle, whereas a bowl-shaped excision with 45° angles is used in MMS.⁸ The clinically drawn margin and the deeper margins of the cutting edge differ, as the surgeon cuts towards the tumour.

The usefulness of OCT in MMS depends on diagnostic accuracy, time needed for OCT evaluation and costs. Based on our findings the accuracy was poor. We also found that the procedure was time consuming and difficult to implement within a well-balanced workflow in MMS. Furthermore, it must be realized that costs include the purchase of the OCT device, training of personnel and extra scanning time.

In conclusion, based on the results of the current study, the use of OCT for the assessment of BCC resection margins prior to MMS cannot be recommended in clinical practice yet.

Funding source

No external funding.

Conflict of interest

None declared.

Data availability statement

Data will be made available upon request.

Table 1 Diagnostic parameters for various cut-off values of the confidence score [level of confidence in BCC diagnosis was recorded on a five-point Likert scale (0 = certainly not a BCC; 1 = suspicion of BCC presence is low; 2 = suspicion of BCC is high; 3 = surely BCC but uncertain about subtype and 4 = surely BCC and certain about BCC subtype)]

	Observer 1	Observer 2	Consensus
Cut-off 1234 vs. 0			
Sensitivity	81.5 (75/92)	88.0 (81/92)	-
Specificity	22.5 (23/102)	11.8 (12/102)	-
PPV	48.7 (75/154)	47.4 (81/171)	-
NPV	57.5 (23/40)	52.2 (12/23)	-
Cut-off 234 vs. 01			
Sensitivity	56.5 (52/92)	55.4 (51/92)	63.0 (58/92)
Specificity	52.9 (54/102)	53.9 (55/102)	52.9 (54/102)
PPV	52.0 (52/100)	52.0 (51/98)	54.7 (58/106)
NPV	57.4 (54/94)	57.3 (55/96)	61.4 (54/88)
Cut-off 34 vs. 012			
Sensitivity	37.0 (34/92)	35.9 (33/92)	-
Specificity	72.5 (74/102)	70.6 (72/102)	-
PPV	54.8 (34/62)	52.4 (33/63)	-
NPV	56.1 (74/132)	55.0 (72/131)	-
Cut-off 4 vs. 0123			
Sensitivity	13.0 (12/92)	7.6 (7/92)	-
Specificity	91.2 (93/102)	90.2 (92/102)	-
PPV	57.1 (12/21)	41.2 (7/17)	-
NPV	53.8 (93/173)	52.0 (92/177)	-

For example, using a cut-off value of 34 vs. 012, only lesions that were surely BCC according to the OCT observer were defined as a positive OCT result, all other scans were defined as a negative OCT result. Consequently, specificity is high in this category at the cost of sensitivity. When using lower cut-off values for the definition of a positive OCT result, sensitivity increases and specificity decreases.

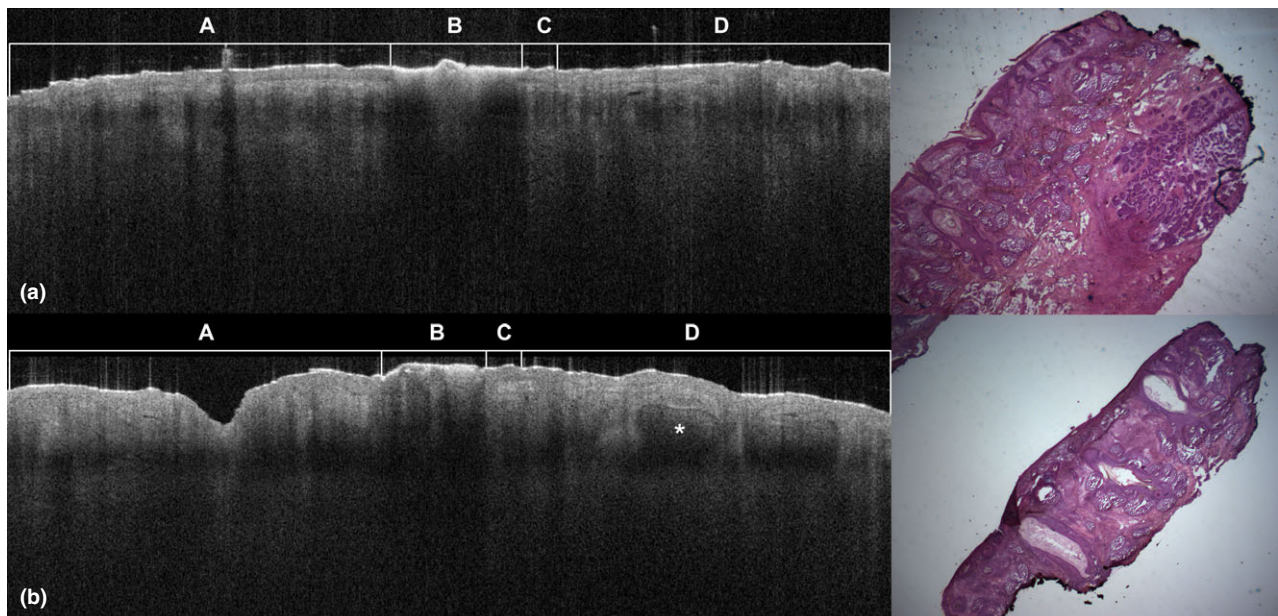


Figure 1 OCT images of a false-negative and a false-positive margin in comparison with the corresponding histology. A, Tumour tissue and 2-mm safety margin. B, White line drawn with POSCA PC-1MV pen visible as a white hyperreflective line, casting a shadow underneath. C, Primary resection margin directly next to the white line. D, Tissue that was assessed. (a) False-negative margin in comparison with the corresponding histology. Histology shows a nodular and micronodular BCC in the deep margin. D: In this part, no BCC characteristics are visible. (b) False-positive margin in comparison with the corresponding histology. Histology shows adnexal richness without the presence of BCC nests. D: In this part, an adnexal structure (asterisk) was misinterpreted as BCC nest.

F. Adan,^{1,2,*} E.J.J. Kallen,^{1,2} G. Dermont,^{1,2}

J.M. Muche,³ K.A.E. Sinx,^{1,2} A. Schilder,³

M. Abdul Hamid,⁴ P.J. Nelemans,⁵ K. Mosterd^{1,2}

¹Department of Dermatology, Maastricht University Medical Center, Maastricht, The Netherlands, ²GROW Research Institute for Oncology and Developmental Biology, Maastricht University, Maastricht, The Netherlands, ³Mohs klinieken Hoorn, Hoorn, The Netherlands,

⁴Department of Pathology, Maastricht University Medical Center, Maastricht, The Netherlands, ⁵Department of Epidemiology, Maastricht University, Maastricht, The Netherlands

*Correspondence: F. Adan. E-mail: fieke.adan@mumc.nl

F. Adan and E.J.J. Kallen share first authorship.

P.J. Nelemans and K. Mosterd share senior authorship.

5 Alawi SA, Kuck M, Wahrlich C *et al*. Optical coherence tomography for presurgical margin assessment of non-melanoma skin cancer - a practical approach. *Exp Dermatol* 2013; **22**: 547–551.

6 Pyne JH, Myint E, Barr EM, Clark SP, Hou R. Basal cell carcinoma: variation in invasion depth by subtype, sex, and anatomic site in 4,565 cases. *Dermatol Pract Concept* 2018; **8**: 314–319.

7 Sinx KAE, van Loo E, Tonk EHJ *et al*. Optical coherence tomography for noninvasive diagnosis and subtyping of basal cell carcinoma: a prospective cohort study. *J Invest Dermatol* 2020; **140**: 1962–1967.

8 Mansouri B, Bicknell LM, Hill D, Walker GD, Fiala K, Housewright C. Mohs micrographic surgery for the management of cutaneous malignancies. *Facial Plast Surg Clin North Am* 2017; **25**: 291–301.

DOI: 10.1111/jdv.17804

References

- 1 Cheng HM, Guitera P. Systematic review of optical coherence tomography usage in the diagnosis and management of basal cell carcinoma. *Br J Dermatol* 2015; **173**: 1371–1380.
- 2 NVDV. Multi-disciplinary evidence-based guideline basal cel carcinoma. Utrecht, 2015. URL <https://www.oncoline.nl> (last accessed: September 2021).
- 3 De Carvalho N, Schuh S, Kindermann N, Kastle R, Holmes J, Welzel J. Optical coherence tomography for margin definition of basal cell carcinoma before micrographic surgery-recommendations regarding the marking and scanning technique. *Skin Res Technol* 2018; **24**: 145–151.
- 4 Wang KX, Meekings A, Fluhr JW *et al*. Optical coherence tomography-based optimization of mohs micrographic surgery of Basal cell carcinoma: a pilot study. *Dermatol Surg* 2013; **39**: 627–633.

Dermoscopy and reflectance confocal microscopy of Kaposi's sarcoma: an overview

Dear Editor,

Kaposi's sarcoma (KS) is a multifocal systemic disease originating from vascular structures, associated with human type 8 herpesvirus and mainly affecting elderly men (male : female ratio, 10-15 : 1).^{1,2} Dermoscopy and reflectance confocal microscopy