

Localized innovation, localized diffusion and the environment: an analysis of CO₂ emission reductions by passenger cars, 2000-2007

Citation for published version (APA):

Los, B., & Verspagen, B. (2008). *Localized innovation, localized diffusion and the environment: an analysis of CO₂ emission reductions by passenger cars, 2000-2007*. UNU-MERIT, Maastricht Economic and Social Research and Training Centre on Innovation and Technology. UNU-MERIT Working Papers No. 037

Document status and date:

Published: 01/01/2008

Document Version:

Publisher's PDF, also known as Version of record

Please check the document version of this publication:

- A submitted manuscript is the version of the article upon submission and before peer-review. There can be important differences between the submitted version and the official published version of record. People interested in the research are advised to contact the author for the final version of the publication, or visit the DOI to the publisher's website.
- The final author version and the galley proof are versions of the publication after peer review.
- The final published version features the final layout of the paper including the volume, issue and page numbers.

[Link to publication](#)

General rights

Copyright and moral rights for the publications made accessible in the public portal are retained by the authors and/or other copyright owners and it is a condition of accessing publications that users recognise and abide by the legal requirements associated with these rights.

- Users may download and print one copy of any publication from the public portal for the purpose of private study or research.
- You may not further distribute the material or use it for any profit-making activity or commercial gain
- You may freely distribute the URL identifying the publication in the public portal.

If the publication is distributed under the terms of Article 25fa of the Dutch Copyright Act, indicated by the "Taverne" license above, please follow below link for the End User Agreement:

www.umlib.nl/taverne-license

Take down policy

If you believe that this document breaches copyright please contact us at:

repository@maastrichtuniversity.nl

providing details and we will investigate your claim.



UNITED NATIONS
UNIVERSITY

UNU-MERIT

Working Paper Series

#2008-037

**Localized Innovation, Localized Diffusion and the
Environment: An Analysis of CO₂ Emission Reductions by
Passenger Cars, 2000-2007**

Bart Los and Bart Verspagen

Localized Innovation, Localized Diffusion and the Environment: An Analysis of CO₂ Emission Reductions by Passenger Cars, 2000-2007

Bart Los* and Bart Verspagen**

* Faculty of Economics & Business, University of Groningen, and Groningen Growth and Development Centre (GGDC), b.los@rug.nl

** Department of Economics, Maastricht University, and UNU-Merit, b.verspagen@algec.unimaas.nl

(First draft, 22 May 2008)

Abstract

We investigate technological change with regard to CO₂ emissions by passenger cars, using a Free Disposal Hull methodology to estimate technological frontiers. We have a sample of cars available in the UK market in the period 2000 – 2007. Our results show that the rates of technological change (frontier movement) and diffusion (distance to frontier at the car brand level) differ substantial between segments of the car market. We conclude that successful policies should be aimed at diffusion of best-practice technology, and take account of the different potential for further progress between different segments of the market (e.g., diesel and gasoline engines, and small vs. large engines).

JEL Codes: Q55, O31, O33

Key words: CO₂ emissions by cars; technological change; diffusion of innovations

UNU-MERIT Working Papers
ISSN 1871-9872

Maastricht Economic and social Research and training centre on Innovation and Technology, UNU-MERIT

UNU-MERIT Working Papers intend to disseminate preliminary results of research carried out at the Centre to stimulate discussion on the issues raised.

1. Introduction

Technological change is seen as a key factor contributing to the reduction of emissions of greenhouse gases. Carbon dioxide (CO₂) is one of the most important of these gases, and emissions by (passenger) contribute heavily to the level of CO₂ in the atmosphere. Hence, it does not come as a surprise that the European Commission stimulates the development of cleaner automotive technologies. In 1995, for example, it set a target to reduce average emissions of CO₂ to 120 grams per kilometer driven by passenger cars in Europe. The population of passenger vehicles in Europe is heterogeneous, however, both in terms of size and in terms of the basic motor and fuel technologies used. From an engineering point of view, for example, diesel and gasoline engine technologies have different static and dynamic potential for reducing CO₂ emissions.¹ Differences also exist for other characteristics of cars, such as manual vs. automatic transmission, or for small vs. large engines. Moreover, some types of cars are more natural candidates to apply radically new technologies, such as hybrid cars. Consequently, the 120 g/km target may be attained in various ways, for example by switching between existing technologies, or by exploiting technology-specific differences in development potential.

Our aim in this paper is first to provide descriptive and analytical evidence of the performance of the various technologies available in the market. We thus ask, for various segments of the car market, what performance in CO₂ emission reduction has been realized in the recent past, and to what extent it has differed between fuel types. Taking these results as a point of departure, we ask a second question: How important is the heterogeneity of the available technologies for achieving the 120 g/km target? Should we expect that this target will be met by a shift towards a single car type, e.g., hybrid cars? Or should we expect that technological change has been so fast and universal that the target will be attainable without losses in heterogeneity?

It is currently believed that the actual pace of emission reductions towards the CO₂ target is too slow,² and that average emissions currently stand at about 160 g/km. Therefore, the European Commission has announced a more stringent set of measures that should bring down average emissions to 130 g/km in 2012. From our answers to the research questions outlined above, we will draw conclusions regarding the most promising ways to achieve such further reduction in emissions.

We will use a database of all car models available in the United Kingdom over the period July 2000 – May 2007. Although we have data at yearly intervals, we will focus here (for reasons of space), on the earliest and most recent observation. For 2000, the dataset consists of 1738 car models, while data for 2971 car models have been available for 2007. The data were collected by the Vehicle Certification Agency (VCA) in the UK, and are documented on its website.³ The primary purpose of this website is to inform consumers who wish to buy a car, but it also represents the official information used for levying environmental taxes on the purchase of cars. The VCA does not carry out its own testing, but leaves this to either independent organizations or the car manufacturers and

¹ See Van den Bergh *et al.* (2006) for arguments in favor of environmental innovation policies focusing on maintaining or increasing diversity rather than economic efficiency. The arguments put forward are derived from insights in evolutionary economics.

² See, for example, Cousins *et al.* (2007).

³ <http://www.vcacarfueldata.org.uk>.

importers. The VCA does inspect the tests and the data in the database, etc. The figures on CO₂ emissions are based on a standard test-drive, which combines an urban and extra-urban stretch. Since the technical specification of the cars does not differ from those in other European countries, the CO₂ emission levels can be considered as representative for Europe as a whole.

The main drawback of the database is that it does not include any data on car sales. Hence, we have no way of calculating average CO₂ emissions for a representative market.⁴ Furthermore, we do not have much information on the actual performance characteristics of the cars (in terms of characteristics from which buyers derive utility, such as speed, or comfort), which is something on which we will comment in more detail later. The database does include information on other environmental aspects of cars, such as emission of particulates in the case of diesel cars, emission of NO_x, CO and hydrocarbons.⁵ We only use the data on CO₂, however, since these are the main policy focus. Incompleteness of data concerning other pollutants is another reason not to consider other environmental aspects.

In the remainder of this paper, we first look, in Section 2, at some descriptive data on the various fuel technologies available in the market. In Section 3, we explain our methodology. The empirical results are presented in Sections 4 and 5. The first of these looks at technological change, and outlines how rates of technological change have differed between segments of the car market. Section 5 looks at technological diffusion, in particular at the brand level. Section 6 summarizes and draws conclusions.

2. CO₂ emissions and fuel economy

Tight governmental regulations to reduce CO₂ emissions are not the only incentive for car manufacturers to produce cleaner cars. Buyers might for instance prefer to buy clean cars, especially as long as some other desirable performance criteria are met. From an economic point of view, the empirical fact that CO₂ emissions are strongly linked to fuel costs is very important. Even without environmental tax benefits, driving a cleaner car implies driving more cheaply. Hence, manufacturers have a natural tendency to increase the environmental friendliness of their cars as a consequence of their objective to increase their market shares.

CO₂ results from burning fuel in a car's engine, and hence the less fuel a car consumes (per km), the less CO₂ will be emitted (see Oliver-Hoyo and Pinto, 2008, for a brief explanation of the chemical principles). Figure 1 shows just how tightly fuel efficiency and CO₂ emissions are connected. The observations include all car models

⁴ In fact, even information on sales of different models would not enable us to attribute changes in CO₂ emissions to effects due to technological change and effects due to a changing composition of the fleet of vehicles. As pointed out by Kwon (2005), among others, we should have data on actual distances driven by specific types of cars to arrive at such a quantification of contributions. See also Paravantis and Georgakellos (2007), who estimated models in which several economic and demographic indicators as well as variables related to alternative transport modalities are included to predict CO₂ emissions from car ownership.

⁵ See Mazzi and Dowlatabadi (2007), who argue that the UK's decision to start taxing vehicles according to CO₂ emissions rates in 2001-2002 led to an increasing share of diesel cars in total sales. The increase of air pollution through particulates has been an important negative side-effect.

included in the VCA database, for all years between 2000 and 2007. The relation between fuel consumed (in liters per 100 km, l/100km) and CO₂ emissions in g/km is perfectly linear with only a small error margin. The tight fit implies that no significant changes have occurred in the relationship between CO₂ emissions and fuel economy. We document these relationships for the various engine technologies available in our database, which distinguishes the cars by the fuels they use. These different engine technologies provide different potential for reducing CO₂ emissions, as is shown by the fact that the linear relations have different intercepts and slopes for the different technologies. Table 1 shows the estimated linear relationships and the R² values of the OLS regressions. Our regression results are similar to those in Oliver-Hoyo and Pinto, 2008.

[Table 1 about here]

For a given level of fuel use, diesel engines generally emit most CO₂, while engines running on gas fuels (LPG and CNG)⁶ emit least CO₂. However, there are also large differences with regard to the average fuel use of the various engine types. This is not completely evident in the figure, which only gives an indication of the range of fuel uses for various fuel types. Cars running on gasoline exclusively account for the uneconomical half of the sample (i.e., engines with >15 l/100km). Thus, because the average diesel car in the market uses less fuel per km than an average gasoline car, diesel engines are generally lower on CO₂ emissions (see also Sullivan *et al.*, 2004).

Interestingly, hybrid cars (i.e., those running on gasoline and an electric battery) do not, in Figure 1, turn out to be significantly different from cars running on gasoline. This is explained by the fact that the CO₂ emissions from these cars are solely determined by their gasoline use. Thus, the relationship between gasoline use and CO₂ emissions is identical to that for gasoline cars, but hybrid cars use less gasoline per km, and hence have lower CO₂ emissions than the average gasoline car.

[Figure 1 about here]

The fact that the 120 (130) g/km target is rather ambitious is illustrated by the fact that the large majority of car models in our sample emits much more than this amount of CO₂, although it should be kept in mind that we are not able to weight models by sales figures. Given the tight fit of the relationship in the figure, which holds over the complete period of 2000 – 2007, taking into account all intermediate years, it is clear that there are two major ways of reducing CO₂ emissions of the average car in the market. The first is to increase mileage (decrease l/km) within a given engine type, i.e., movement along the curves towards the origin. Switching between curves is the other way for consumers to reduce CO₂ emissions. In this respect, especially LPG and CNG technologies seem to have potential for further reducing CO₂ emissions by cars. Diesel and hybrid engines provide opportunities for combining the two tendencies.

The results in this section already show that heterogeneity (between fuel types) in the market provides different opportunities for reducing CO₂. We proceed to investigate this in more detail. In these investigations, we will pay specific attention to issues related

⁶ These are in fact bi-fuel engines, which may use gasoline as a back-up fuel.

to improvements in best-practice technologies and the diffusion of these technologies to other brands.

3. Estimation of technological frontiers

In order to assess the extent to which technological progress has contributed to CO₂ reduction, we employ a series of models to estimate so called technological frontiers. In all of these models, we will adopt the perspective that car performance is a constraint to emissions. Car manufacturers are assumed to try to minimize CO₂ emissions (and fuel use) at given levels of performance, which they would like to deliver in order to sell sufficient cars at a decent rate of profit. The frontiers that we estimate thus describe a technological trade-off: if a manufacturer wants to sell a high-performance car, he must accept high(er) CO₂ emissions. Loosely speaking, a car type for which CO₂ emissions are smaller than for other types with a similar performance is considered to define the frontier. For several segments of performance, such best-practice types can be identified. We are interested in how the technological frontiers developed over time, how they differed between engine types, and how they differed between car manufacturers.

As a measure of performance, we use engine capacity (or “displacement”). This is an imperfect and indirect indicator, which we use instead of more direct measures of car performance, such as engine power, speed, pulling capacity, acceleration and comfort. Our dataset does not include any information on these characteristics. One advantage of using engine capacity as an approximation for this, is that the estimation of our frontiers is greatly facilitated by the use of only a single “output”. Nevertheless, we have to keep in mind that different car models in our sample may represent different trade-offs between the underlying characteristics, and, moreover, that different type of engines (such as diesel and gasoline engines) provide different trade-offs.

In the literature, three broad approaches to estimating frontiers can be discerned. These are stochastic frontier analysis (SFA), data envelopment analysis (DEA) and free disposal hull (FDH) analysis.⁷ SFA consists of a collection of econometric techniques, while DEA and FDH are methods based on mathematical programming. For our purposes, SFA is not a very attractive option, since we would have to specify a functional form for the frontier to be estimated. Although some specifications offer more flexibility than others, we feel that our focus on localized technological change (reductions of CO₂ emissions in specific ranges of engine capacity) would lose much of its appeal if we would adopt an SFA approach. The ‘costs’ we have to incur for choosing a mathematical programming approach are mainly related to the fact that these approaches cannot cope well with statistical noise, caused for example by measurement error. If, for example, measurement error of any kind leads to a very positive evaluation of the CO₂ emissions of a certain car type (given its engine capacity), this will immediately lead to a substantial change in the shape and location of the frontier.⁸ In view of the highly standardized way

⁷ An accessible introduction to SFA and DEA is provided by Coelli *et al.* (2005). A more comprehensive overview is offered by Fried *et al.* (1993).

⁸ Very recently, bootstrapping methods have been introduced into DEA and FDH studies to alleviate the problems related to the presence of statistical noise (see, e.g. Cazals *et al.*, 2002, and Daraio and Simar, 2005). For our purposes, these techniques are not appropriate, since many observations cannot

in which the emissions evaluations were set up, we do not consider this a very important drawback.

Both DEA and FDH construct linear piecewise frontiers (see Lovell, pp. 26-34, for detailed mathematical formulations). In our one-input, one-output context, an observation is located on the estimated frontier if there is no observation with a lower or equal value for the input (CO₂ emissions) that produced an equal or higher output value (engine capacity). This interpretation stresses the so-called ‘output-orientation’. The alternative ‘input-orientation’ could read as: an observation is located on the frontier if there is no observation with an equal or higher output level (engine capacity) that used an equal or smaller amount of inputs (CO₂ emissions). Irrespective of the orientation chosen, exactly the same observations determine the frontier. This result does not carry over to ‘efficiency’ scores, which give an indication of the distance between the frontier and dominated observations. If this distance is measured vertically, we consider the extra engine capacity that would have been possible if the car type considered would have had the best-practice technology for the corresponding CO₂ level. This distance is generally different from the horizontal distance, which is associated with the input-orientation: it represents the reduction in CO₂ emissions that would have been possible if the car (given its engine capacity) would have been designed according to best practice. In view of the political pressure on car manufacturers to meet stricter emission standards, we adopt the input-orientation perspective. This choice does not only play a role when considering distances between observations and frontiers, but also when we analyze differences in locations of frontiers for two periods: we define technological progress as the proportional reduction of CO₂ emission levels for a given engine capacity.⁹

Finally, our decision to prefer FDH over DEA should be discussed. The two approaches differ in one important respect: the supposed shape of the frontier between two best-practice observations. This issue can best be explained by means of an example. Let us assume that we have two frontier points, (200, 2000) and (250, 3000). The first coordinate represents the input level, the second the output level. If inputs and outputs would relate to the performance of machines that ran for an hour, it could safely be assumed that an input level of 225 units would suffice to produce 2500 units by having both machines running for half an hour. DEA (pioneered by Farrell, 1957, and Charnes *et al.*, 1978) follows this reasoning in assuming that linear combinations of frontier points are feasible. In our setting, however, it does not make much sense to assume that a car with an engine capacity of 2500 cc can be “assembled” by putting together half a car with a small best-practice engine and half a car with a big best-practice engine. FDH (see Deprins *et al.*, 1984) incorporates this idea that linear combinations of frontier points are not necessarily feasible. It estimates a more conservative frontier, assuming that it is impossible to produce any car with a capacity of more than 2000 cc with less than 250 g of CO₂ emissions. This leads to stepwise technology frontiers.

be seen as statistically independent from each other (several versions of one car type are present in our database).

⁹ The frontiers for 2007 will be estimated using observations relating to car models available in 2007 only. Alternatively, we could have opted for a ‘sequential’ approach (see Los and Timmer, 2005), in which data on car models on offer in 2000 would also be included in the analysis for 2000. The idea behind this alternative is that it is hard to believe in ‘technological forgetting’ over a short span of time. In the present case, we are more interested in actual choices made by manufacturers to bring specific CO₂- technologies embodied in car to the market.

4. Patterns of localized innovation

Figure 2 provides the most basic result of our frontier estimation, the frontiers at the beginning of our period (July 2000) and the end of the period (May 2007). Tables 2a-2c give details about the car models found on the various frontiers. As expected, the 2007 frontier lies further to the left than the 2000 frontier, which reflects a general tendency towards cleaner cars for given performance levels. Two points do not obey this rule. One of these is the second point (from the left) on the year 2000 frontier, the Seat Arosa SDI with 1.7 liter diesel engine, which produced 119 g CO₂ /km. This car was no longer in the market in 2007, and none of the comparable cars in the market (either Seat or other brands) perform better in terms of CO₂ emissions.

[Figure 2 about here]

The other point at which the year 2000 frontier is further out than the 2007 frontier, is the leftmost point. In both years, this leftmost point on the frontier is a hybrid car. In 2000, it is the Honda Insight, which produces only 80 g CO₂ / km. This car was taken off the market in 2006, and its position on the frontier was taken by the hybrid Toyota Prius, which produces 104 g CO₂ / km, although with a larger engine capacity (1.5 liter).

[Tables 2a/2b/2c about here]

While these two hybrid cars dominate the absolute left of the frontier, diesel cars make up the subsequent part of the frontier in both years. In 2000, we already saw the Seat Arosa, which is the second point on the frontier, but in fact points 2 – 11 on the year 2000 frontier are diesel cars. The last one of these is a Mercedes S-class with a 4 liter diesel engine. In 2007, the diesel dominance of the left half of the frontier is weaker, although still existent. Now, points 2 – 5 and point 7 are diesel cars. The intermediate point 6 is an interesting case: it is a Volvo S60 running on CNG.

The rightmost parts of the frontiers are dominated by gasoline engines. In the year 2000, gasoline engines become more CO₂ efficient than diesel engines at 4.3 liter (this is a Mercedes E-class emitting 259 g CO₂ / km). In 2007, the shift-over point between diesel and gasoline is located at 3 liter (a BMW 5 series emitting 176 g CO₂ / km). The 2007 frontier also has an interesting case in the form of the Lexus GS450h, which is a hybrid car, but with a much larger (3.5 liter) gasoline engine than the Toyota Prius, and emits 186 g CO₂ / km. This car is positioned at the immediate left part of the gasoline part of the 2007 frontier, right behind the BMW 5 series car that was mentioned earlier.

Comparing the two frontiers, we immediately observe that progress is uneven for ranges of values along the vertical axis. Figure 3 reveals this in a more direct way. Here, we calculated the rate of technical progress (which we define, in line with the input approach to interpreting the frontiers, as the proportional reduction between 2000 and 2007 of CO₂ emissions at a given engine capacity) at various parts of the frontier. We evaluated this at all engine capacities for which we have a defining point on either the 2000 or 2007 frontier. The figure also gives proportional reductions of CO₂ emissions at

the frontier (not documented) for individual fuel types, i.e., diesel and gasoline (hybrids and LPG/CNG have too few points to make the calculations meaningful). As the discussion above has shown, the global frontier can be seen as a piecewise combination of these fuel-specific frontiers. The lines in the figure are estimated polynomial trends for the individual series.

[Figure 3 about here]

We observe a number of interesting features. First, there are clear differences between the two fuel types. Diesel engines are available in a more limited range of engine capacities, and within this range, CO₂-reducing innovation for gasoline-driven cars has generally been more prominent than for diesel-fueled cars. In other words, the gasoline frontier shifted much more rapidly to the left than the one for diesel. The leftward shift of the diesel frontier almost nowhere exceeded 10%, while in the “diesel range” of approximately 1300 – 4000 cc, the corresponding shift of the gasoline frontier has usually been in the double digits.

Second, the degree to which the frontier shifted varies substantially between different ranges of engine capacity. This holds both for individual fuel types, and for the combined global frontier. This feature is clearly shown by the fact that the estimated trend functions clearly have local maxima. Diesel engines show low rates of CO₂-reducing innovation in the range just to the right of the 3 liter point. At this point of the frontier, the cleanest diesel-driven cars in 2007 emitted more CO₂ than the ones in 2000. This negative performance is mostly related to the fact that Mercedes, which was the leading manufacturer in this segment of the diesel range in 2000, has moved to smaller diesel engines in 2007. In this way, Mercedes has vanished from the diesel frontier completely in 2007, while the model that took over in this range (the Mitsubishi Shogun) still emits 15-30% more CO₂ than the Mercedes models in 2000. At the left of the diesel range, we saw an MCC Smart with 799 cc engine in 2000, which vanished from the market in 2008. Its role on the frontier in 2007 was taken over by a Citroen C1 with a much larger engine that emitted more CO₂. This led to a rightward shift of the frontier in this range of engine capacities.

For gasoline engines, we observe that progress peaked in a broad range between 2000 and 3000 cc, as well as in the range of large, >6 liter engine cars. We also see three points just below 1000 cc that are somewhat of an outlier.

Combining these insights in the development of the fuel type-specific frontiers, we arrive at some interesting insights about the shifts of the global frontier. We had already noticed that technological progress at the absolute left side (engines of 1000 cc or less) is negative due to the peculiarity that only very few hybrid cars are available. Once competitors for the Toyota Prius (especially smaller cars) will enter the market, we may expect that we will once again observe leftward shifts of the frontier in this segment of the market.

Beyond the low, hybrid-dominated range, diesel engines rule, and since progress of diesel technologies in terms of CO₂ reduction has generally been slower than in gasoline engines (with identical displacement), growth of the global frontier is held back by the diesel dominance. In other words, in this segment, gasoline engines have largely caught up with diesel engines in terms of CO₂ performance, although the global frontier is still

defined by diesel-driven cars. The range of 3000 – 4000 cc is an illustration of what could happen in the future in the sub-3000 cc range. Here, we have witnessed leapfrogging by gasoline-fueled cars, replacing diesel engine cars that previously dominated the frontier for this segment. Although the pace of CO₂-reducing technological progress as indicated by the gasoline frontier has been falling with engine capacity in this segment, gasoline performance shifts are still quite high in the range just beyond 3000 cc. However, because even the cleanest gasoline car types emitted much more CO₂ than diesel cars in 2000, the ‘takeover’ implied a slow growth of the global frontier. If the takeover point would shift even further to the left in the future,¹⁰ this would imply a slowdown of reductions in CO₂ reductions in the sub-3000 cc range, at least for the immediate future.

The range beyond 6000 cc engines is characterized by complete dominance of gasoline, and here performance grows at a high rate. But CO₂ emission reductions in this segment will not lead to huge contributions to industry-wide reductions, due to its relatively low share of the total car market.

In general, these results underline the importance of so-called localized technological change. The reductions in terms of CO₂ emissions that were realized over the period 2000 – 2007 differ substantially between fuel types, and between ranges of engine capacities. We cannot think of the global technological frontier in environment-friendly cars as something that shifts out evenly over time. Among other things, this means that in terms of pure technological change, we need to look at the composition of the market for cars as an important variable in terms of reaching an average target of CO₂ reductions.¹¹

5. Patterns of technology diffusion

So far we have not looked much at what happens behind the technological frontier, except for the differences between the fuel types. However, since the majority of cars in the market are not on the actual frontier, developments behind the frontiers should not be ignored. However, one feature of the data makes this part of the analysis a bit difficult. Many of the car models in the database differ only in aspects that are unrelated to the main variables in our analysis (CO₂ emissions and engine capacity). For example, the May 2007 sample of the dataset has 12 Mitsubishi Shogun models. All of these are diesel cars with a 3.2 liter engine, but they have only 4 distinct CO₂ emission levels (the other differences are either undocumented in the database, or related to the transmission system used).

In order to filter out the model differences that are not related to CO₂ emissions (i.e., to “reduce” the 12 Shoguns to 4), we start by estimating one frontier for every brand in the database. This frontier combines cars of all fuel types, and covers the complete range of engine capacities that the particular brand puts on the market. We used brand

¹⁰ We have no particular reason to expect this, but it is an analytically attractive hypothesis.

¹¹ Fontaras and Samaras (2007) express concerns that the observed reduction in CO₂ emissions by cars is mainly due to a shift in sales towards diesel-driven cars. They feel that the market for diesel engine cars is reaching its saturation level, as a consequence of which further reductions for the industry as a whole might come to a halt.

names and did not consider ownership of the brands (e.g., although Citroen is owned by Peugeot, we considered them as separate brands). We constructed the brand-specific frontiers for 2000 and 2007, and consider them as the state-of-the-art technology of the particular brand. We are then interested in the position of the brand's state-of-the-art relative to the global frontier.

Since any point below a brand-specific frontier cannot lie on the global frontier by construction, the latter can be found by considering all points on the brand-specific frontiers. For a given point in time, the collection of brand-specific frontiers could then consist of two types of points: those on the global frontier, and those below it. Those lying on the frontier were already discussed in the previous section. The points that lie below the frontier are inefficient as compared to the frontier (i.e., for a given engine capacity, lower CO₂ levels are achieved by other manufacturers). The inefficiency for each point on a brand-specific frontier can be quantified by calculating the efficiency level compared to the global frontier. We use the input approach to calculate this, and express efficiency of a given point as CO₂ emissions of a model divided by emissions at the global frontier, evaluated at the same engine capacity level. Thus, maximum efficiency (a point on the global frontier) corresponds to a value of 1.

At first instance, we look at a summary measure for how far the brand-specific frontiers are behind the global frontier. This is depicted in Figure 4, for each of the two years we considered before.¹² The leftmost (rightmost) point consists of the smallest (largest) engine in the dataset, and this is always a unique model. However, for parts of the cc-range that are just beyond (before) the minimum (maximum), we see the number of car models rising quickly, and the points in Figure 3 generally represent 6 to 30 models.¹³

[Figure 4 about here]

Starting with the year 2000, we see that average inefficiency is rather large on the immediate left, i.e., in the sub-1000 cc range. This is due to the low-emission performance of the hybrid Honda Insight. In the 1000–3000 cc, average inefficiency is fluctuating along a roughly constant level of approximately 70-75%. The next segment, from 3000 cc onwards, shows higher average efficiency, 75–80%.

The existence of these significant deviations from frontier CO₂ emission levels indicates that there is a substantial potential for technological diffusion. Judging from the year 2000 data, if all new cars on the market would have CO₂ emissions equal to the frontier, average emissions would be cut by some 20-30% on average. We may note that

¹² The points on the horizontal axis of this figure constitute the set of all observed engine capacities on brand-specific frontiers in the particular year. Obviously, not all brands have a model for every point in this set. Consistent with the FDH approach, we use, for all brands in the dataset, the smallest engine capacity that is larger than the point we are evaluating. We do not use a brand if the engine capacity we are evaluating is outside the range of the smallest and largest engine capacity of that particular brand. For example, if Volvo produces cars in the 1560–4414 cc range, we do not use Volvo in the calculation of average efficiency at 1300 or 5000 cc.

¹³ Since the car with the largest engine capacity will always be located on the frontier, no value should be attached to the average efficiency of 1 for the rightmost points in Figure 4. For both years in our sample, the engine with the largest capacity was only present in one car type.

this is a conservative estimate, since we did not look at cars that are not on a brand's frontier.

To what extent has this potential for technological diffusion been realized? And which brands were particularly good in realizing it? The 2007 curve in Figure 4 shows that there are two ranges in which diffusion has been strong. This is the sub-1000 cc range, and the 1300–2000 cc range. Average efficiency levels have increased considerably in these ranges. In other ranges, they have remained constant or even decreased somewhat (the latter is the case in the >5000 cc range). We may thus conclude that especially in the smaller engine capacity range, which is already the one that has lowest CO₂ emission levels, technological diffusion has been strong. It is interesting to note that these ranges have been characterized by relatively slow rates of CO₂-reducing innovation, according to Figure 3. In segments featuring a high rates of localized technological progress (such as the 2000-3000 cc range), diffusion seems to have been much less prominent. Apparently, not only innovation has been localized in specific engine capacity ranges, but also technology diffusion has been localized in nature.

The data at brand level, which we do not document explicitly for reasons of space, can provide us with some hints on the mechanisms underlying the dynamics of technological change and diffusion in the various segments. One thing we notice is that the range of sub-1300 cc engine capacity is rather different from the other ranges. All 6 brands that are present in this segment in both 2000 and 2007 have increased their efficiency levels over the period. As noticed already, hybrid cars are a dominant force in this segment. Another notable feature is that in this segment, we find many manufacturers that do not belong to the group of traditional brands. For example, we find the MCC Smart as a trend-setting gasoline car in this segment, and the Malaysian brands Perodua and Proton. The latter two brands are specific to the UK, and are not sold in other parts of the EU. In general, the traditional brands, such as VW, Ford, or Toyota are not found in this segment.¹⁴ Thus, we conclude that the sub-1300 cc range is one in which radical technological change plays a large role, and outsider firms have a relatively large impact on aggregate dynamics.

In the 1300–2000 cc range, as in all larger ranges, we find a strong dominance of the more traditional European brands, with some catching-up of non-European brands in 2007. Looking at the list of 24 brands that were present in this range in the period 2000-2007, the 12 most efficient brands were European (Mercedes, Peugeot and VW were leading) . The first non-European brand, Ford, ranked 13th in terms of average efficiency. In 2007, we find Toyota second (mostly due to the Prius), Honda 5th and Ford 7th. The strong European performance supports the hypothesis that the relatively strict EU policies are indeed a stimulus for European car manufacturers to produce cleaner cars.

¹⁴ Note that this does not necessarily mean these that brands do not sell any cars with engine capacity <1300 cc. We just do not find any cars <1300 cc on the frontiers of these brands, which means they have cars with larger engines that have better or equal CO₂ performance. The Toyota Prius is a prime example of this: it sets the standard in the sub 1300 cc range, but it has >1300 cc capacity itself.

5. Conclusions and discussion

Our analysis shows that CO₂ emissions in cars sold in Europe have indeed been reduced over the period 2000 – 2007. European car manufacturers appear relatively efficient in minimizing CO₂ emissions, as compared to manufacturers from Asia or North America. But as is well known, average emissions are far from the 120 g/km target set by the EU. Judging by the rates of technological progress that we observe for various segments of the car market during 2000 - 2007, it is highly unlikely that the next 4-5 years will bring a reduction to an average level of 130 g/km. With an average reduction of 15% over the past 8 years, we expect that a 10% reduction until 2012 is already much to expect. This would imply that not even in the market segment of cars with <2000 cc engines we would observe a complete convergence to 130 g/km.

But such a view, which is essentially based on extrapolation of existing trends, may be too pessimistic on several accounts. First, one may object that car manufacturers may step up their efforts in response to stronger policy incentives, and hence that the rates of technological progress that will be realized over the coming years will be higher than those seen in the past. Given that there may be decreasing marginal returns to R&D efforts, e.g. because the easiest technological opportunities are applied first, this seems unlikely to us.

Second, we must note that the rates of technological progress that we estimated for the 2000–2007 period underestimate the potential for progress in the wider market, because many brands sold in the market lag behind the technological frontier. A policy aimed at diffusion of best-practice technology seems to hold much (more) potential for reducing CO₂ levels significantly. This is obviously controversial, since what we are saying is that technologies that are proprietary to a specific manufacturer should, from the point of view of an efficient CO₂ technology in the market as a whole, be diffused to a larger group of manufacturers. This is a complex policy issue that may require original and radical thinking, and is connected to a range of legal issues, such as intellectual property law (patents) and competition law.

Third, we find that switching between fuel types may provide important benefits in terms of CO₂ emissions. In other words, the heterogeneity in terms of fuel type engines that we find in the market may still be better used in terms of reducing CO₂ emissions by cars. With new diesel engines now equipped with particulates filters, many of the traditional drawbacks of diesel engines as compared to gasoline engines are no longer as relevant as they used to be. This creates a large potential for “dieselization” of the car park with engines <3000 cc. We must note, however, that although this is expected to yield short-run benefits (diesel engines that are now on the market are better CO₂ minimizers than comparable gasoline engines), there seems to be a counteracting long-run tendency. Over the 2000–2007 period, gasoline engines have shown a more rapid increase of technological change related to CO₂ emissions than diesel engines. Whether this will continue into the future is hard to judge.

References

- Bergh, J.C.J.M van den, A. Faber, A.M. Idenburg and F.H. Oosterhuis (2006), "Survival of the Greenest: Evolutionary Economics and Policies for Energy Innovation", *Environmental Sciences*, vol. 3, pp. 57-71.
- Cazals, C., P. Florens and L. Simar (2002), "Nonparametric Frontier Estimation: A Robust Approach", *Journal of Econometrics*, vol. 106, pp. 1-25.
- Charnes, A., W.W. Cooper and E. Rhodes (1978), "Measuring the Efficiency of Decision-Making Units", *European Journal of Operational Research*, vol. 2, pp. 429-444.
- Coelli, T.J., D.S. Prasada Rao, C.J. O'Donnell and G.E. Battese, *An Introduction to Efficiency and Productivity Analysis*, New York: Springer.
- Cousins, S.H., J. Garcia Bueno and O. Palomares Coronado (2007), "Powering or De-Powering Future Vehicles to Reach Low Carbon Outcomes: The Long Term View 1930-2020", *Journal of Cleaner Production*, vol. 15, pp. 1022-1031.
- Daraio, C. and L. Simar (2005), "Introducing Environmental Variables in Nonparametric Frontier Models: A Probabilistic Approach", *Journal of Productivity Analysis*, vol. 24, pp. 93-121.
- Deprins, D., L. Simar and H. Tulkens (1984), "Measuring Labor-Efficiency in Post Offices", in: M. Marchand, P. Pestieau and H. Tulkens (eds.), *The Performance of Public Enterprises: Concepts and Measurement*, Amsterdam: North-Holland.
- Farrell, M.J. (1957), "The Measurement of Productive Efficiency", *Journal of the Royal Statistical Society (Series A)*, vol. 120, pp. 253-281.
- Fontaras, G. and Z. Samaras (2007), "A Quantitative Analysis of the European Automakers' Voluntary Commitment to Reduce CO₂ Emissions from New Passenger Cars Based on Independent Experimental Data", *Energy Policy*, vol. 35, pp. 2239-2248.
- Fried, H.O., C.A.K. Lovell and S.S. Schmidt (eds.) (1993), *The Measurement of Productive Efficiency; Techniques and Applications*, New York: Oxford University Press.
- Kwon, T.-H. (2005), "Decomposition of Factors Determining the Trend of CO₂ Emissions from Car Travel in Great Britain (1970-2000)", *Ecological Economics*, vol. 53, pp. 261-275.
- Los, B. and Timmer, M. (2005), "The 'Appropriate Technology' Explanation of Productivity Growth Differentials: An Empirical Approach", *Journal of Development Economics*, vol. 77, pp. 517-531.
- Lovell, C.A.K. (1993), "Production Frontiers and Productive Efficiency", in: Fried, H.O., C.A.K. Lovell and S.S. Schmidt (eds.) (1993), *The Measurement of Productive Efficiency; Techniques and Applications*, New York: Oxford University Press, pp. 3-67.
- Mazzi, E. and H. Dowlatabadi (2007), "Air Quality Impacts of Climate Mitigation: UK Policy and Passenger Vehicle Choice", *Environmental Science and Technology*, vol. 41, pp. 387-392.
- Oliver-Hoyo, M.T and G. Pinto (2008), "Using the Relationship between Vehicle Fuel Consumption and CO₂ Emissions To Illustrate Chemical Principles", *Chemistry for Everyone*, vol. 81, pp. 218-220.

- Paravantis, J.A. and D.A. Georgakellos (2007), "Trends in Energy Consumption and Carbon Dioxide Emissions of Passenger Cars and Buses", *Technological Forecasting & Social Change*, vol. 74, pp. 682-707.
- Sullivan, J.L., R. E. Baker, B. A. Boyer , R. H. Hammerle, T. E. Kenney, L. Muniz and T. J. Wallington (2004), "CO₂ Emission Benefit of Diesel (versus Gasoline) Powered Vehicles", *Environmental Science and technology*, vol. 38, pp. 3217-3223.

Table 1: Fuel-specific linear regressions between CO₂ emissions (dependent variable) and fuel consumption

Fuel type	Intercept	Slope	R ²
Gasoline	2.99	23.6	0.99
Diesel	0.28	26.7	0.99
LPG	4.27	15.7	0.98
CNG	3.51	17.5	1.00
Hybrid	2.08	23.4	1.00

Table 2a. Frontier car models, 2000 and 2007, gasoline frontier

2000		CO ₂	cc	2007		CO ₂	cc
MCC	Smart Cabrio	115	599	Citroen	C1	109	998
Daihatsu	Cuore	127	989	Kia	Picanto	123	999
Suzuki	Swift	130	993	Kia	Picanto	124	1086
Toyota	Yaris	134	999	Fiat	Panda	127	1242
Fiat	Punto	136	1242	Honda	Jazz	129	1246
Suzuki	Swift	139	1298	Citroen	C2	133	1360
Toyota	Yaris	144	1299	Fiat	Grande Punto	134	1368
Volkswagen	Lupo	151	1390	Mini	R56	138	1397
Nissan	Almera	158	1498	Mini	R56	139	1598
Renault	Mégane	162	1598	BMW	1 Series	140	1995
Mitsubishi	Carisma	164	1834	Ford	New Focus	169	1999
Renault	Mégane	181	1998	Mercedes-Benz	A-Class	172	2035
Mitsubishi	Galant	196	2351	BMW	5 Series	174	2497
Volvo	V70	205	2435	BMW	5 Series	176	2996
Mitsubishi	Galant	214	2498	Mercedes-Benz	CLS-Class	217	3498
BMW	3 Series	216	2793	BMW	5 Series	232	4000
BMW	3 Series	218	2979	BMW	5 Series	246	4799
Mercedes-Benz	CLK-Class	242	3199	Mercedes-Benz	E-Class	258	4966
Mercedes-Benz	E-Class	259	4266	Corvette	C6	277	5967
Mercedes-Benz	CLK-Class	281	5439	BMW	7 Series	327	5972
Chevrolet	Camaro	294	5700	Chrysler Jeep	300C	330	6063
Mercedes-Benz	S-Class	321	5786	Mercedes-Benz	CLK Coupé	338	6208
Rolls-Royce & Bentley	Bentley	418	6761	Corvette	C6	350	7011
Chrysler Jeep	Viper	483	7990	Dodge	SRT10	488	8285

Table 2b. Frontier car models, 2000 and 2007, diesel frontier

2000				2007			
		CO ₂	cc			CO ₂	cc
MCC	Smart City	90	799	Citroen	C1	109	1398
Seat	Arosa SDI	119	1716	Renault	Clio	115	1461
Fiat	Punto	130	1910	Ford	Fiesta	116	1560
Peugeot	206	136	1997	BMW	1 Series	123	1995
Mazda	323	149	1998	Honda	Civic 06	135	2204
Nissan	Almera	152	2184	Toyota	Avensis	156	2231
Volvo	S80	169	2461	BMW	5 Series	165	2993
BMW	3 Series	181	2926	Mitsubishi	Shogun	244	3200
Mercedes-Benz	E-Class	207	3199	Audi	A8	249	4134
Mercedes-Benz	E-Class	209	3222	Toyota	Land Cruiser	282	4164
Mercedes-Benz	S-Class	212	3226	Volkswagen	Touareg	346	4921
Mercedes-Benz	S-Class	253	3996				
Toyota	Landcruiser	292	4164				

Table 2c. Frontier car models, 2000 and 2007, global frontier

2000					2007				
		fuel	CO ₂	cc			fuel	CO ₂	cc
Honda	Insight	Hybrid	80	995	Toyota	Prius	Hybrid	104	1497
Seat	Arosa	Diesel	119	1716	Ford	Fiesta	Diesel	116	1560
Fiat	Punto	Diesel	130	1910	BMW	1 Series	Diesel	123	1995
Peugeot	206	Diesel	136	1997	Honda	Civic	Diesel	135	2204
Mazda	323	Diesel	149	1998	Toyota	Avensis	Diesel	156	2231
Nissan	Almera	Diesel	152	2184	Volvo	S60	CNG	159	2435
Volvo	S80	Diesel	169	2461	BMW	5 Series	Diesel	165	2993
BMW	3 Series	Diesel	181	2926	BMW	5 Series	Gasoline	176	2996
Mercedes-Benz	E-Class	Diesel	207	3199	Lexus	GS	Hybrid	186	3456
Mercedes-Benz	E-Class	Diesel	209	3222	Mercedes-Benz	CLS-Class	Gasoline	217	3498
Mercedes-Benz	S-Class	Diesel	212	3226	BMW	5 Series	Gasoline	232	4000
Mercedes-Benz	S-Class	Diesel	253	3996	BMW	5 Series	Gasoline	246	4799
Mercedes-Benz	E-Class	Gasoline	259	4266	Mercedes-Benz	E-Class	Gasoline	258	4966
Mercedes-Benz	CLK-Class	Gasoline	281	5439	Corvette	C6	Gasoline	277	5967
Chevrolet	Camaro	Gasoline	294	5700	BMW	7 Series	Gasoline	327	5972
Mercedes-Benz	S-Class	Gasoline	321	5786	Chrysler Jeep	300C	Gasoline	330	6063
Rolls-Royce & Bentley	Bentley	Gasoline	418	6761	Mercedes-Benz	CLK Coupé	Gasoline	338	6208
Chrysler Jeep	Viper	Gasoline	483	7990	Corvette	C6	Gasoline	350	7011
					Dodge	SRT10	Gasoline	488	8285

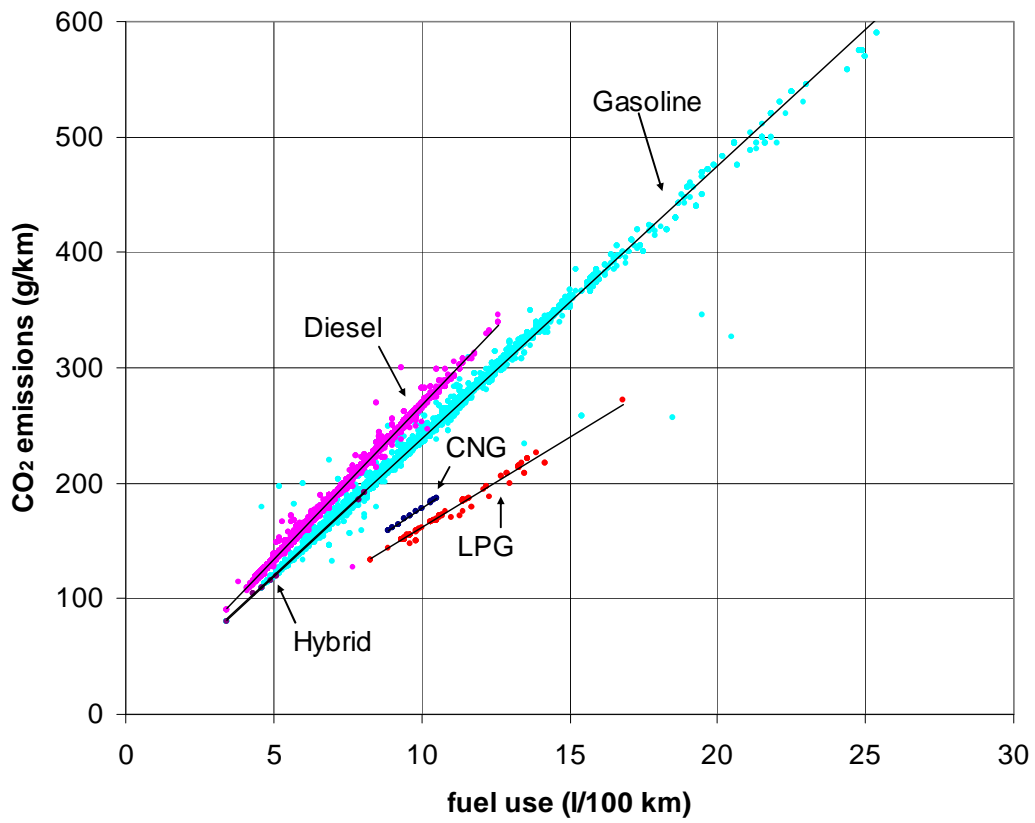


Figure 1: Fit between CO₂ emissions and fuel use by fuel type (all observations, 2000-2007)

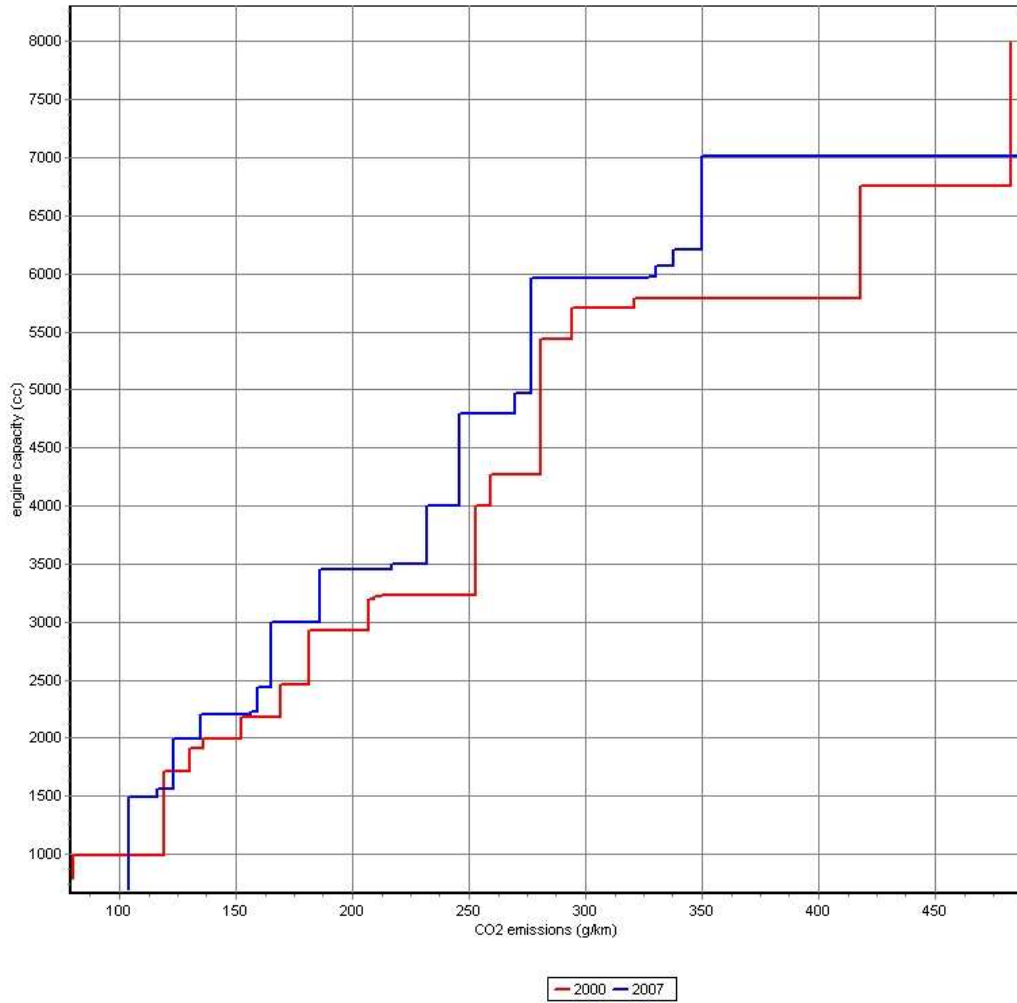


Figure 2. Global CO₂ frontiers in 2000 and 2007

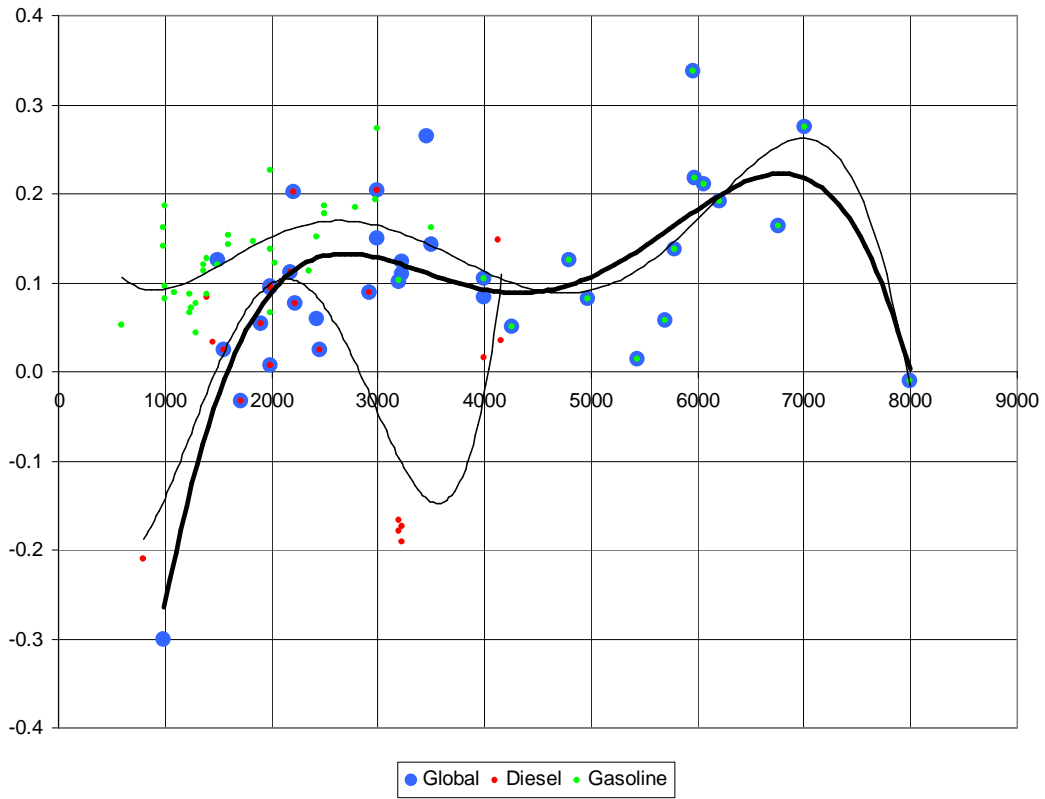


Figure 3. Proportional reductions in CO₂ emissions on the frontier, between 2000 and 2007

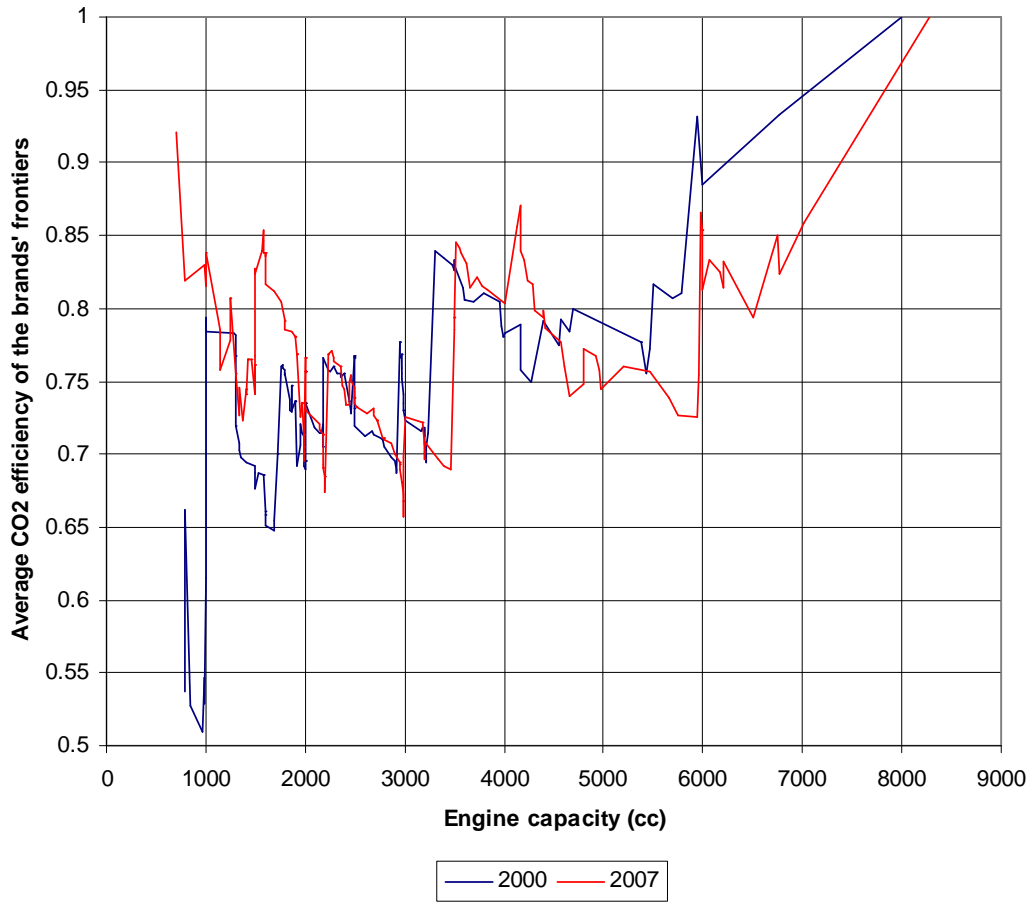


Figure 4. Average efficiencies of brands, at various points of the global frontier

The UNU-MERIT WORKING Paper Series

- 2008-01 *Science, Technology and Development: Emerging concepts and visions* by Luc Soete
- 2008-02 *Reframing technical change: Livestock Fodder Scarcity Revisited as Innovation Capacity Scarcity. Part 1. A Review of Historical and Recent Experiences* by Andy Hall, Rasheed Sulaiman V., Mona Dhamankar, Peter Bezkorowajnyj & Leela Prasad
- 2008-03 *Reframing technical change: Livestock Fodder Scarcity Revisited as Innovation Capacity Scarcity. Part 2. A Framework for Analysis* by Andy Hall, Rasheed Sulaiman, V. and Peter Bezkorowajnyj
- 2008-04 *Reframing technical change: Livestock Fodder Scarcity Revisited as Innovation Capacity Scarcity. Part 3. Tools for Diagnosis and Institutional Change in Innovation Systems* by Andy Hall, Rasheed Sulaiman and Peter Bezkorowajnyj
- 2008-05 *Is Inter-Firm Labor Mobility a Channel of Knowledge Spillovers? Evidence from a Linked Employer-Employee Panel* by Mika Maliranta, Pierre Mohnen & Petri Rouvinen
- 2008-06 *Financial Constraints and Other Obstacles: Are they a Threat to Innovation Activity?* By P. Mohnen, F.C. Palm, S. Schim van der Loeff and A. Tiwari
- 2008-07 *Knowledge-based productivity in 'low-tech' industries: evidence from firms in developing countries* by Micheline Goedhuys, Norbert Janz and Pierre Mohnen
- 2008-08 *The Voyage of the Beagle in Innovation Systems Land. Explorations on Sectors, Innovation, Heterogeneity and Selection* by Martin Srholec & Bart Verspagen
- 2008-09 *Crafting Firm Competencies to Improve Innovative Performance* by Boris Lokshin, Anita van Gils & Eva Bauer
- 2008-10 *The Economics and Psychology of Personality Traits* by Lex Borghans, Angela Lee Duckworth, James J. Heckman & Bas ter Weel
- 2008-11 *Embedding Research in Society: Development Assistance Options for Supporting Agricultural Innovation in a Global Knowledge Economy* by Andy Hall
- 2008-12 *Playing in Invisible Markets: Innovations in the Market for Toilets to Harness the Economic Power of the Poor* by Shyama V. Ramani
- 2008-13 *Explaining Success and Failure in Development* by Adam Szirmai
- 2008-14 *Running The Marathon* by William Cowan, Robin Cowan and Patrick Llerena
- 2008-15 *Productivity effects of innovation, stress and social relations* by Rifka Weehuizen, Bulat Sanditov and Robin Cowan
- 2008-16 *Entrepreneurship and Innovation Strategies in ICT SMEs in Enlarged Europe (EU25)* by Kaushalesh Lal and Theo Dunnewijk
- 2008-17 *Knowledge Transfers between Canadian Business Enterprises and Universities: Does Distance Matter?* By Julio M. Rosa & Pierre Mohnen
- 2008-18 *Multinationals are Multicultural Units: Some Indications from a Cross-Cultural Study* by Nantawan Noi Kwanjai & J. Friso den Hertog

- 2008-19 *The Innovativeness of Foreign Firms in China* by Branka Urem, Ludovico Alcorta and Tongliang An
- 2008-20 *Beyond the emission market: Kyoto and the international expansion of waste management firms* by Ionara Costa, Asel Doranova and Geert-Jan Eenhoorn
- 2008-21 *The 'making of' national giants: technology and governments shaping the international expansion of oil companies from Brazil and China* by Flavia Carvalho and Andrea Goldstein
- 2008-22 *If the Alliance Fits . . . : Innovation and Network Dynamics* by Robin Cowan & Nicolas Jonard
- 2008-23 *Facing the Trial of Internationalizing Clinical Trials to Developing Countries: With Some Evidence from Mexico* by Fernando Santiago-Rodriguez
- 2008-24 *Serving low-income markets: Rethinking Multinational Corporations' Strategies* by Shuan SadreGhazi and Geert Duysters
- 2008-25 *A percolation model of eco-innovation diffusion: the relationship between diffusion, learning economies and subsidies* by Simona Cantono and Gerald Silverberg
- 2008-26 *New Europe's Promise for Life Sciences* by Sergey Filippov and Kálmán Kalotay
- 2008-27 *A closer look at the relationship between life expectancy and economic growth* by Théophile T. Azomahou, Raouf Boucekkine, Bity Diene
- 2008-28 *Regional Capital Inputs in Chinese Industry and Manufacturing, 1978-2003* by Lili Wang & Adam Szirmai
- 2008-29 *Worker remittances and government behaviour in the receiving countries* by Thomas Ziesemer
- 2008-30 *Strategic motivations for Sino-Western alliances: a comparative analysis of Chinese and Western alliance formation drivers* by Tina Saebi & Qinqin Dong
- 2008-31 *Changing Configuration of Alternative Energy Systems* by Radhika Bhuyan and Lynn Mytelka
- 2008-32 *Promoting clean technologies: The energy market structure crucially matters* by Théophile T. Azomahou, Raouf Boucekkine, Phu Nguyen-Van
- 2008-33 *Local Knowledge Spillovers, Innovation and Economic Performance in Developing Countries: A discussion of alternative specifications* by Effie Kesidou and Adam Szirmai
- 2008-34 *Wage effects of R&D tax incentives: Evidence from the Netherlands* by Boris Lokshin and Pierre Mohnen
- 2008-35 *Cross-border Investment and Economic Integration: The Case of Guangdong Province and Hong Kong SAR* by Naubahar Shari and Can Huang
- 2008-36 *Radical versus non-radical inventions* by Wilfred Schoenmakers, Geert Duysters & Wim Vanhaverbeke

2008-37 *Localized Innovation, Localized Diffusion and the Environment: An Analysis of CO₂ Emission Reductions by Passenger Cars, 2000-2007* by Bart Los and Bart Verspagen