

# Fluid intake and clinicopathological characteristics of bladder cancer

Citation for published version (APA):

van Hensbergen, M., van Osch, F. H. M., Jochems, S., James, N. D., Wallace, D. M. A., Wesselius, A., Cheng, K. K., Bryan, R. T., & Zeegers, M. P. (2020). Fluid intake and clinicopathological characteristics of bladder cancer: the West Midlands Bladder Cancer Prognosis Programme. *European Journal of Cancer Prevention*, 29(2), 110-118. <https://doi.org/10.1097/CEJ.0000000000000525>

## Document status and date:

Published: 01/03/2020

## DOI:

[10.1097/CEJ.0000000000000525](https://doi.org/10.1097/CEJ.0000000000000525)

## Document Version:

Publisher's PDF, also known as Version of record

## Document license:

Taverne

## Please check the document version of this publication:

- A submitted manuscript is the version of the article upon submission and before peer-review. There can be important differences between the submitted version and the official published version of record. People interested in the research are advised to contact the author for the final version of the publication, or visit the DOI to the publisher's website.
- The final author version and the galley proof are versions of the publication after peer review.
- The final published version features the final layout of the paper including the volume, issue and page numbers.

[Link to publication](#)

## General rights

Copyright and moral rights for the publications made accessible in the public portal are retained by the authors and/or other copyright owners and it is a condition of accessing publications that users recognise and abide by the legal requirements associated with these rights.

- Users may download and print one copy of any publication from the public portal for the purpose of private study or research.
- You may not further distribute the material or use it for any profit-making activity or commercial gain
- You may freely distribute the URL identifying the publication in the public portal.

If the publication is distributed under the terms of Article 25fa of the Dutch Copyright Act, indicated by the "Taverne" license above, please follow below link for the End User Agreement:

[www.umlib.nl/taverne-license](http://www.umlib.nl/taverne-license)

## Take down policy

If you believe that this document breaches copyright please contact us at:

[repository@maastrichtuniversity.nl](mailto:repository@maastrichtuniversity.nl)

providing details and we will investigate your claim.

# Fluid intake and clinicopathological characteristics of bladder cancer: the West Midlands Bladder Cancer Prognosis Programme

Mitch van Hensbergen<sup>a</sup>, Frits H.M. van Osch<sup>a,c</sup>, Sylvia Jochems<sup>a,c</sup>, Nicholas D. James<sup>c</sup>, D. Michael A. Wallace<sup>c</sup>, Anke Wesselius<sup>a</sup>, K.K. Cheng<sup>d</sup>, Richard T. Bryan<sup>c</sup> and M.P. Zeegers<sup>a,b</sup>

**Objective** Between 10 and 20% of bladder cancer patients who are diagnosed with nonmuscle-invasive bladder cancer will progress to muscle-invasive disease. Risk of progression depends on several factors at diagnosis including age, tumour stage, grade, size and number, and the presence or absence of carcinoma in situ. Fluid intake may be related to these factors.

**Methods** Data of 1123 participants from the West Midlands Bladder Cancer Prognosis Programme were used. Data collection was via a semistructured questionnaire, and case report forms were used to collect clinicopathological data. Fluid intake was measured for six main categories: alcoholic fluids, hot fluids, fruit fluids, milk, fizzy drinks, and water, and converted into quintile variables. Multilevel mixed-effects linear regression was performed for every beverage category per clinicopathological variable and corrected for age, gender, and smoking status.

**Results** Age at diagnosis was distributed differently amongst those in different total fluid intake quintiles (predicted means 71.5, 70.9, 71.5, 69.9, and 67.4, respectively) and showed a significant inverse linear trend

in alcohol ( $P < 0.01$ ), hot fluids ( $P < 0.01$ ), and total fluids intake ( $P < 0.01$ ), in nonmuscle-invasive bladder cancer patients.

**Conclusion** Our results suggest an inverse association for alcohol intake and total fluid intake with age at diagnosis. These results should be confirmed by future studies, alongside a possible (biological) mechanism that could influence tumour growth, and the effect of micturition frequency. *European Journal of Cancer Prevention* 29:110–118 Copyright © 2019 Wolters Kluwer Health, Inc. All rights reserved.

*European Journal of Cancer Prevention* 2020, 29:110–118

**Keywords:** alcohol intake, bladder cancer, fluid intake, tumour characteristics

<sup>a</sup>Departments of Complex Genetics, NUTRIM School for Nutrition and Translational Research in Metabolism; <sup>b</sup>Public Health and Primary Care (School CAPHRI), Maastricht University, Maastricht, The Netherlands; <sup>c</sup>Institute of Cancer and Genomic Sciences and <sup>d</sup>Department of Public Health and Epidemiology, University of Birmingham, Birmingham, UK

Correspondence to Frits H.M. van Osch, MSc, Maastricht University, Maastricht, The Netherlands  
Tel: +31 (0)43 3882012; e-mail: f.vanosch@maastrichtuniversity.nl

Received 17 October 2018 Accepted 7 May 2019

## Introduction

Bladder cancer (BC) is the 10th most common cancer in the UK. With 10 063 new cases diagnosed in 2014, the BC incidence in the UK is about 28 cases every day (Cancer Research UK, 2016); the total number of BC patients make up 3% of the total cancer cases (Cancer Research UK, 2016). BC occurs more often in the elderly (Kirkali *et al.*, 2005) and, due to the increasingly elderly population, will likely form a large burden on healthcare systems in the future. BC also has the largest per-patient lifetime cost of all cancers (Botteman *et al.*, 2003; Cooksley *et al.*, 2008; Sievert *et al.*, 2009) and recurs often (Kaufman *et al.*, 2009; Burger *et al.*, 2013). At presentation, 70–75% of patients are diagnosed with nonmuscle-invasive bladder cancer (NMIBC: stages Ta/T1/Tis) (Kaufman *et al.*, 2009; Burger *et al.*, 2013). NMIBC recurs in 50–70% of cases (Kaufman

*et al.*, 2009); 10–20% of cases will progress to muscle-invasive bladder cancer (MIBC: stages T2–T4) (Rübben *et al.*, 1988; Kaufman *et al.*, 2009) and may ultimately die from disease (Bryan *et al.*, 2015). Five-year survival rates for MIBC are 27–50% (Vale and Advanced Bladder Cancer (ABC) Meta-analysis Collaboration, 2003).

The urogenous contact hypothesis assumes that a high total fluid intake dilutes the urine concentration and increases the frequency of urination, which in turn reduces the time carcinogens in the urine are in contact with the bladder urothelium (Oyasu and Hopp, 1974). This should lead to a decreased risk of BC (Silverman *et al.*, 1992; Zhou *et al.*, 2014). Literature regarding the association between total fluid intake and BC risk is inconsistent (Brinkman and Zeegers, 2008; Silberstein and Parsons, 2010). In a systematic review done by Brinkman and Zeegers (Brinkman and Zeegers, 2008), 10 out of 20 studies that investigated the influence of total fluid intake reported a statistically significant association, of

Supplemental digital content is available for this article. Direct URL citations appear in the printed text and are provided in the HTML and PDF versions of this article on the journal's website, [www.eurjancerprev.com](http://www.eurjancerprev.com).

which six reported a positive association and four a negative association with bladder cancer risk. In the Health Professionals Follow-Up Study, Michaud *et al.* (Michaud *et al.*, 1999) reported a significant decreased risk of BC in men with a high total fluid intake, whilst other observational studies did not report any statistically significant association (Zeegers *et al.*, 2001; Ros *et al.*, 2011).

Progression risk depends on several factors at diagnosis including age, tumour stage, grade, size and number, and the presence or absence of carcinoma in situ (CIS) (Kiemeny *et al.*, 1993; Millán-Rodríguez *et al.*, 2000). The impact of fluid intake on these clinicopathological factors is still not clear, as this has not yet been researched (Babjuk *et al.*, 2017). NMIBC and MIBC are two very different versions of BC, with a different treatment and prognosis each. We will therefore look at them separately, as to not let the results be influenced by any unknown confounder. This study is the first attempt to investigate whether fluid intake is associated with either favourable or unfavourable clinicopathological factors at diagnosis.

## Materials and methods

### The West Midlands Bladder Cancer Prognosis Programme

The Bladder Cancer Prognosis Programme (BCPP) is an ongoing multicentre epidemiological prospective cohort study with 1550 participants recruited from 10 different hospitals in the West Midlands. The aim of the BCPP is to gather information on determinants of BC and its prognosis. Participants were eligible if cystoscopy findings were suggestive of BC. Patients who were previously diagnosed with cancer of the urethra, bladder, ureter, or renal pelvis within the last decade were excluded from the cohort, as well as patients who were infected with HIV. Details of the BCPP cohort have been published previously (Zeegers *et al.*, 2010). The study protocol was approved by the Nottingham Multi-centre Research Ethics Committee (06/MRE04/65), and written informed consent was obtained from all participants.

### Dietary intake assessment (or fluid intake assessment)

All data were collected prospectively. Baseline data collection was done with the use of a semistructured questionnaire administered by research nurses before initial treatment for BC (transurethral resection, TURBT, in most cases). This questionnaire collected information concerning sociodemographic data, medical history, environmental exposures, use of medications, diet, smoking behaviour, health-related quality of life, and social support. Research nurses also collected data on subsequent tumour histopathology and treatment with dedicated case report forms. For fluid intake, participants were asked what their consumption for a certain type of drink was during the past year (never or less than once per month, 1–3 per month, once per week, 2–4 per week, 5–6 per week, and at least once per day), as well as their average

overall daily consumption (average number of drinks per day). For each type of consumption, a standard amount in millilitres (mL) was assumed as follows [alcoholic drinks based on The Chief Medical Officers' Low risk unit guidelines (The Chief Medical Officers' Low risk unit guidelines, 2017)]: a glass of (fortified) wine amounts to 175 mL, a pint of beer or a cider amounts to 568 mL, spirits and liqueurs amount to 25 mL, a cup of hot fluid (tea, coffee, hot chocolate, Ovaltine and Horlicks, and soup) amounts to 237 mL, and a glass of fruit fluid (squashed fruit or pure fruit juice), milk, fizzy drinks, and water all amount to 284 mL. Fluid types were divided into six main categories: alcoholic fluids (wine/champagne, fortified wine, beer, cider, spirits, and liqueurs), hot fluids (tea, coffee, hot chocolate, Ovaltine and Horlicks, and soup), fruit fluids (squashed fruit or pure fruit juice), milk, fizzy drinks, and water. A total fluid intake variable was created by taking the sum of the mentioned categories.

### Outcome assessment

Participants were separated into either NMIBC or MIBC groups based on histopathological TNM classification at diagnosis (Sobin and Wittekind, 2002). Participants with stage Ta, T1, and Tis were coded as NMIBC, whilst participants with T2+ were categorized as MIBC. This information, along with grade (1973 classification), the number of tumours visible, the presence or absence of concomitant CIS, and the size of the largest tumour, was gathered by the research nurses after initial resection. Age at diagnosis was calculated by subtracting the date of birth of the participant with the date of the cystoscopy results.

### Statistical analyses

A quintile variable was created consisting of five groups per beverage type for all beverage categories and for total fluid intake. Descriptive statistics compared age at diagnosis, NMIBC or MIBC cases, stage, grade, tumour size (cm), number of tumours, and smoking status per quintile of total fluid intake. Smoking status was included since smoking is a significant contributor towards the development of bladder cancer as well as prognosis (van Osch *et al.*, 2016). A multilevel mixed-effects linear regression was performed for every beverage category (alcohol, hot fluids, fruit fluids, milk, and water) per clinically relevant variable (age at diagnosis, grade, stage, number of tumours, size of largest tumour) with the exception of concomitant (CIS). The relation between different types of drinks and fluid intake categories with each clinicopathological characteristic of BC was investigated by calculating predicted means for different types and amounts of fluid intake. After testing for heterogeneity, some analyses appeared to use heterogeneous data, so a random intercept was added for all analyses to be consistent. This was done to correct for potential clustering of patients in hospital areas. Tests for linear trend over quintile categories were performed

by linear regression analysis using the quintile categories as dummy variables.

Age at diagnosis, gender, and smoking status were corrected for in all regression models, where applicable. Since alcohol is expected to already show effects in small quantities compared to nonalcohol drinkers (Pelucchi *et al.*, 2002; Al-Zalabani *et al.*, 2016), an extra group was created consisting of all nonalcohol drinkers, which served as the reference group for the analyses of all alcohol consumption. For every other beverage type, the lowest category was used as the reference group (never/less than once per month), with an exception for tea and coffee. Since tea and coffee are widely consumed in large quantities, the reference group for these types was the highest category (at least once per day). Sensitivity analyses were done by running the regression analyses for patients aged 75 and above exclusively. We calculated predicted means for each clinical outcome per fluid intake group with 95% confidence intervals (CIs).

In addition to the multilevel linear regression models, we also created a logistic regression model for each quintile variable, which investigated the likelihood of being diagnosed with MIBC compared to NMIBC at initial diagnosis. We used odds ratios (OR) to represent the chance of being diagnosed with MIBC compared to NMIBC. The lowest beverage intake group was used as the reference group for each quintile variable. Stata/SE 14.2 was used to perform all statistical analyses and a  $P$  value of  $<0.05$  was considered statistically significant. However, since no statistical corrections were done for multiple comparisons, we will focus our discussion on results with  $P$ -values less than 0.001.

## Results

### Participant selection and descriptive statistics

Out of all 1550 eligible participants, 276 (18%) participants were excluded because they did not subsequently have BC ( $n = 273$ ) or had missing stage data ( $n = 3$ ). Another 122 (8%) participants were excluded due to missing data: missing data for fluid intake ( $n = 1$ ) or missing information, regarding the date at which the questionnaire was filled in to calculate their age at diagnosis ( $n = 121$ ). Another 29 participants were excluded because their fluid intake could not be calculated or was too low to be a realistic amount of fluid ( $<0.5$  L per day in total). Eventually, 1123 participants were eligible for analysis. For some participants, grade information was not available ( $n = 22$ ). However, because all other information was available, these participants were still included in the analyses.

Table 1 of the appendix shows the demographics and clinicopathological data of all participants with BC per quintile for total fluid intake with each quintile representing a higher daily fluid intake. Overall, the quintiles do not seem to have a different distribution of clinical parameters. The gender ratio is a 1:4 female to male ratio

across all quintiles, with a total of 240 (21%) females and 883 (79%) males included in the study. Age at diagnosis is distributed differently ( $P = 0.007$ ) amongst participants in the total fluid quintiles (mean age 71.5, 70.9, 71.5, 69.9, and 67.4, respectively), showing an inverse trend. The ratio of NMIBC to MIBC was consistent across all quintiles.

### Fluid intake and clinicopathological factors for nonmuscle-invasive bladder cancer and muscle-invasive bladder cancer patients

The results of the multilevel mixed-effects linear regression models are discussed below. Additional results concerning the clinicopathological factors grade, stage, and the number of tumours, along with the results for the logistic regression and sensitivity analyses for concomitant CIS, can be found in the Supplemental data, Supplemental digital content 1, <http://links.lww.com/EJCP/A241>.

### Total beverage and total fluid quintiles

#### Age at diagnosis

The results for age at diagnosis can be found in Table 2. Inverse linear trends were observed for alcohol intake, hot fluid intake, fizzy drink intake, and total fluid intake ( $P < 0.001$ ,  $P = 0.001$ ,  $P < 0.001$ , and  $P = 0.001$ , respectively) for NMIBC patients; higher fluid intake was associated with lower age at diagnosis. These inverse trends can also be seen for MIBC patients and alcoholic beverages, fruit fluids, fizzy drinks, and total fluid intake ( $P < 0.001$ ,  $P = 0.017$ ,  $P < 0.001$ , and  $P = 0.012$ , respectively). The intake of hot fluids almost showed a nonsignificant positive trend; higher hot fluid intake was associated with a higher age at diagnosis. The trends for total alcohol intake and total fluid intake can be seen in Fig. 1.

#### Tumour size

The results for tumour size can be found in Table 3. There is a significant ( $P = 0.013$ ) positive linear trend for hot fluids in NMIBC patients; the more hot fluids are consumed, the larger the tumour will be at diagnosis. For MIBC patients, there do not seem to be any statistically significant linear trends. However, there do seem to be trends in hot fluids, fruit fluids, and total fluid intake ( $P = 0.089$ ,  $0.072$ , and  $0.101$ , respectively).

### Individual beverages concerning age at diagnosis and tumour size

#### Age at diagnosis

In Supplemental 1, Supplemental digital content 1, <http://links.lww.com/EJCP/A241>, results can be seen for the different types of alcoholic drinks, as well as different beverages for hot fluids in NMIBC patients. There seems to be an inverse linear trend ( $P = 0.016$ ) for the intake of wine and/or champagne and age at diagnosis. This appears to be the case for beer, cider, and liqueur as well. All hot fluids seem to have a significant linear trend ( $P = 0.028$ ,

**Table 1 Patient characteristics of nonmuscle-invasive bladder cancer and muscle-invasive bladder cancer patients at diagnosis by total fluid intake quintiles**

	Lowest fluid intake: 0–20% (quintile 1)		Low fluid intake: 20–40% (quintile 2)		Medium fluid intake: 40–60% (Quintile 3)		High fluid intake: 60–80% (quintile 4)		Highest fluid intake: 80–100% (quintile 5)	
	N (total = 225)	Mean or (%) and IQR	N (total = 225)	Mean or (%) and IQR	N (total = 224)	Mean or (%) and IQR	N (total = 225)	Mean or (%) and IQR	N (total = 224)	Mean or (%) and IQR
Gender										
Female	46	20%	52	23%	54	21%	48	18%	40	21%
Male	179	80%	173	77%	170	79%	177	82%	184	79%
Age at diagnosis**	225	(65.98–79.38)	225	(64.13–77.52)	224	(64.65–79.55)	225	(63.55–78.14)	224	67.4 (60.37–75.23)
Bladder cancer type										
NMIBC	183	81%	168	75%	181	81%	184	82%	177	79%
MIBC	42	19%	57	25%	43	19%	41	18%	47	21%
T Stage										
Ta	125	55%	107	48%	118	53%	125	56%	104	46%
T1	56	25%	59	26%	61	27%	56	25%	67	30%
Tis	2	1%	2	1%	2	1%	3	1%	6	3%
≥T2	42	19%	57	25%	43	19%	41	18%	47	21%
Grade <sup>a</sup>										
I	51	23%	46	20%	50	22%	62	28%	37	16%
II	67	30%	60	27%	72	32%	65	29%	67	30%
III	103	46%	117	52%	97	44%	94	42%	113	51%
Unable to define	3	1%	1	1%	4	2%	3	1%	6	3%
Tumour size (cm)										
≤3	157	70%	153	68%	153	68%	159	71%	148	66%
>3	68	30%	72	32%	71	32%	66	29%	76	34%
Tumour number										
1 tumour	128	57%	129	57%	132	59%	142	63%	126	56%
2–7 tumours	83	37%	78	35%	78	35%	70	31%	82	37%
8+ tumours	14	6%	18	8%	14	6%	13	6%	16	7%
Smoking status <sup>a</sup>										
Never Smoker	37	17%	32	14%	33	15%	28	12%	24	11%
Current Smo	59	26%	53	24%	63	28%	70	31%	76	34%
Former Smo	128	57%	140	62%	125	57%	127	57%	124	55%

MIBC, muscle-invasive bladder cancer; NMIBC, nonmuscle-invasive bladder cancer.

<sup>a</sup>Due to missing values, the sum of this variable is not the same as the sum for the other variables.

\*\*Significant  $P$  value ( $\chi^2$ ):  $P < 0.01$ .

$P = 0.008$ ,  $P < 0.001$ , and  $P < 0.001$ ), with the exception of coffee ( $P = 0.362$ ). Most of these trends seem to be positive; the more one consumes the higher the age at diagnosis. This is observed in tea, hot chocolate, ovaltine and Horlicks, and soups. However, these positive trends are not observed for total hot fluids intake in Table 2.

### Tumour size

The results for the association between hot fluid beverages and the size of the largest tumour at diagnosis in NMIBC and MIBC patients can be found in Supplemental 5, Supplemental digital content 1, <http://links.lww.com/EJCP/A241>. For NMIBC patients, there do not seem to be any statistically significant linear trends. However, there appears to be a positive linear trend for tea consumption ( $P = 0.061$ ). For MIBC patients, there did not seem to be any linear trends with tumour size.

## Discussion

In the present study, age at diagnosis, grade, stage, number of tumours at diagnosis, the presence or absence of concomitant CIS, and the size of the largest tumour at diagnosis were observed in NMIBC and MIBC patients across fluid intake categories. Based on our results, linear trends are observed between fluid intake and two clinicopathological factors: age at diagnosis and tumour size.

### The inverse association between alcohol and total fluid intake with age at diagnosis

#### Alcohol intake

Clear inverse linear trends can be seen for total alcohol and total fluid intake in NMIBC patients, as seen in the tables and the graphs in Fig. 1. Similar trends can be seen when looking at the separate drinks for alcohol



**Table 2 Predicted means for age at diagnosis by total beverage quintiles and total fluid quintiles (nonmuscle-invasive bladder cancer and muscle-invasive bladder cancer), resulting from multilevel linear regression and adjusted for gender and smoking status**

		Nonmuscle-invasive BC					
		Non	0–20%	20–40%	40–60%	60–80%	80–100%
Total alc. (mL/day)****	N	224	134	135	141	128	131
	Pred, mean	71.74	69.80	69.02**	69.32**	68.73**	67.15**
	95% CI	70.20–73.27	67.90–71.70	67.15–70.89	67.48–71.16	66.80–70.66	65.23–69.07
Total hot fluids (mL/day)*****	n		185	187	176	169	176
	Pred, mean		70.53	71.17	68.8	70.24	66.76**
	95% CI		68.86–72.20	69.54–72.80	67.11–70.49	68.52–71.96	65.08–68.45
Total fruit fluids (mL/day)	n		199	160	201	159	174
	Pred, mean		69.98	69.19	67.85**	70.98	70.03
	95% CI		68.39–71.56	67.45–70.93	66.26–69.43	69.22–72.74	68.33–71.74
Total milk (mL/day) <sup>a</sup>	n		545	ND	ND	192	156
	Pred, mean		70.21	ND	ND	67.02**	70.36
	95% CI		69.15–71.27	ND	ND	65.42–68.61	68.60–72.12
Total fizzy (mL/day) <sup>a*****</sup>	n		542	ND	ND	247	104
	Pred, mean		70.90	ND	ND	67.22***	68.15**
	95% CI		69.80–72.00	ND	ND	65.77–68.67	66.06–70.24
Total water (mL/day)	n		244	202	146	194	107
	Pred, mean		68.77	69.67	69.48	70.7	69.13
	95% CI		67.31–70.23	68.09–71.25	67.67–71.29	69.09–72.32	67.05–71.21
Total fluid intake (mL/day)*****	n		179	179	178	179	178
	Pred, mean		71.11	69.79	70.25	69.53	67.08**
	95% CI		69.47–72.75	68.15–71.44	68.59–71.92	67.89–71.17	65.44–68.73
Muscle-invasive BC							
Total alc. (mL/day)*****	n	71	34	30	32	32	31
	Pred, mean	76.69	73.47	71.11**	73.46	68.57**	69.13**
	95% CI	74.12–79.27	70.00–76.94	67.50–74.73	69.93–76.99	65.03–72.11	65.49–72.77
Total hot fluids (mL/day)	n		52	47	42	44	45
	Pred, mean		69.52	73.27	73.69**	75.17**	72.63
	95% CI		66.87–72.16	70.49–76.05	70.75–76.64	72.27–78.07	69.80–75.47
Total fruit fluids (mL/day)****	n		68	28	52	38	44
	Pred, mean		75.79	72.6	69.10**	75.04	70.42**
	95% CI		73.53–78.05	69.05–76.15	66.51–71.69	72.01–78.06	67.61–73.23
Total milk (mL/day) <sup>a</sup>	n		148	ND	ND	47	35
	Pred, mean		72.94	ND	ND	70.46	74.94
	95% CI		71.36–74.52	ND	ND	67.65–73.27	71.69–78.20
Total fizzy (mL/day) <sup>a*****</sup>	n		144	ND	ND	50	36
	Pred, mean		74.98	ND	ND	68.61***	69.49***
	95% CI		73.43–76.53	ND	ND	65.98–71.24	66.40–72.58
Total water (mL/day)	n		46	66	41	54	23
	Pred, mean		73.28	73.4	73.09	72.7	69.21
	95% CI		70.43–76.12	71.01–75.79	70.08–76.11	70.07–75.33	65.15–73.26
Total fluid intake (mL/day)****	n		46	46	46	46	46
	Pred, mean		73.61	73.86	75.57	71.62	69.03**
	95% CI		70.82–76.40	71.04–76.68	72.77–78.36	68.82–74.42	66.24–71.82

BC, bladder cancer; CI, confidence interval; ND, no data.

<sup>a</sup>Over 60% of people reported the same amount of milk/fizzy intake, resulting in a 'first quintile' that stretches over the subsequent two.

\*\*Significant *P* value: *P* < 0.05.

\*\*\* Significant *P* value: *P* < 0.01.

\*\*\*\*Significant linear trend: *P* < 0.05.

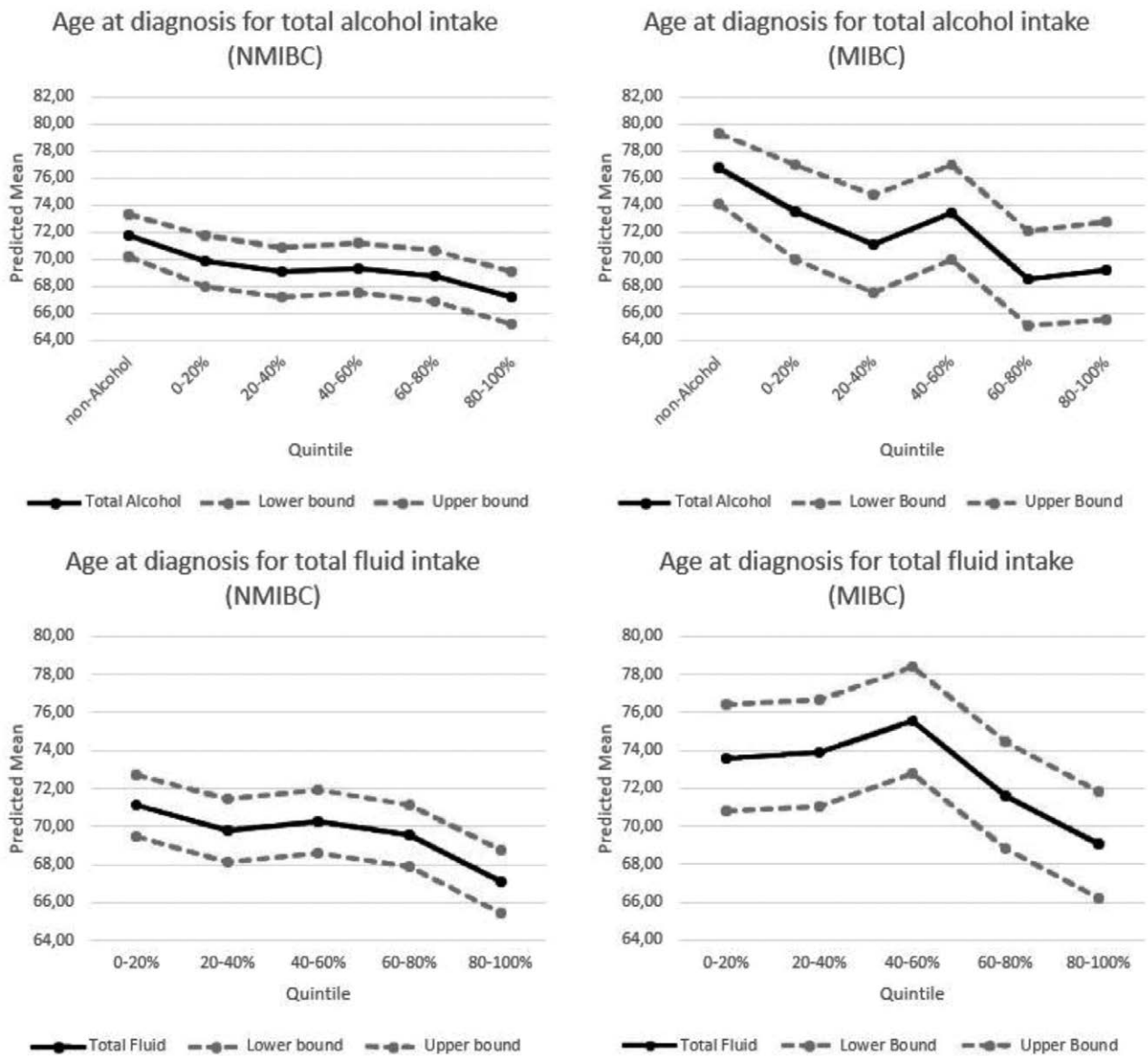
\*\*\*\*\*Significant linear trend: *P* < 0.01.

consumption; inverse trends are observed for wine and champagne, beer, cider, and liqueur. When we compared this to the individual beverages for MIBC patients, a similar pattern can be observed: the predicted mean of age at diagnosis is highest in the nonalcohol drinker group and lower for all following alcohol drinker quintiles (these results can be found in the Supplemental 1, Supplemental digital content 1, <http://links.lww.com/EJCP/A241>). A higher alcohol beverage intake seems to indicate a BC diagnosis at an earlier age.

Literature to date is divided regarding the effects of alcohol on bladder cancer, with most studies concluding alcohol consumption to have no association (Pelucchi *et al.*, 2002; Kogevinas and Trichopoulos, 2002; Djoussé *et al.*,

2004; Pelucchi *et al.*, 2011; Al-Zalabani *et al.*, 2016) with bladder cancer, whereas other studies suggest a slight increase in risk for bladder cancer for men (Zeegers *et al.*, 1999; Zeegers *et al.*, 2001). Our findings, therefore, do not fall in line with the majority of scientific findings. Several possible explanations for the observed association between alcohol and age at diagnosis are given in literature. It could be possible that the reference group might be different from alcohol group, or some form of unmeasured confounding could explain the difference between alcohol drinker and nonalcohol drinker. The reference group for example, consists of nonalcohol drinkers. This is potentially a very select group and could differ from the rest of the population: only 17% of adults aged 16 and above in England said that they had not consumed

Fig. 1



Predicted mean of age at diagnosis for total beverage fluid intake and total alcohol intake (NMIBC and MIBC). MIBC, muscle-invasive bladder cancer; NMIBC, nonmuscle-invasive bladder cancer.

alcohol in the past year or said that they were nondrinker in 2015 (NHS Digital, 2016). When we compared the nondrinker group with the drinkers, they did not seem to differ across demographic statistics. Another explanation could be the effect ethanol has on several mechanisms related to carcinogenesis. Ethanol slows down protein synthesis, which may inhibit cell repair mechanisms, resulting in malignant changes (Seitz and Simanowski, 1988; Berger, 1998). Ethanol also improves permeability to carcinogens, which may cause increased carcinogenic activity (Freund, 1979; Seitz and Simanowski, 1988; Garro and Lieber, 1990; Seitz *et al.*, 1998) and may increase cell proliferation (Seitz and Simanowski, 1988;

Garro and Lieber, 1990; Johansson and Cohen, 1997; Seitz *et al.*, 1998).

**Total fluid intake**

Literature regarding the association of total fluid intake and bladder cancer risk is also divided, with some studies concluding an inverse association (Kiemeny *et al.*, 1993; Villanueva *et al.*, 2006), no association (Dunham *et al.*, 1968; Slattery *et al.*, 1988; Zeegers *et al.*, 2001; Babjuk *et al.*, 2017), and some concluding a positive association (Brummer *et al.*, 1997; Claude *et al.*, 1986; Kunze *et al.*, 1992; Vena *et al.*, 1993). We hypothesized that the urogenous-contact hypothesis could explain

**Table 3 Predicted means for tumour size at diagnosis by total beverage quintiles and total fluid quintiles (NMIBC and MIBC), resulting from multilevel linear regression and adjusted for age, gender, and smoking status**

		Nonmuscle-invasive BC					
		Non	0–20%	20–40%	40–60%	60–80%	80–100%
Total alc (mL/day)	n	218	130	129	135	125	127
	Pred, mean	2.5	2.6	2.49	2.54	2.41	2.48
	95% CI	2.23–2.78	2.26–2.94	2.15–2.83	2.20–2.87	2.06–2.75	2.13–2.82
Total hot fluids (mL/day)**	n		180	178	171	162	173
	Pred, mean		2.37	2.36	2.43	2.48	2.87**
	95% CI		2.08–2.66	2.07–2.65	2.13–2.72	2.18–2.79	2.58–3.17
Total fruit fluids (mL/day)	n		193	154	195	155	167
	Pred, mean		2.55	2.72	2.45	2.31	2.5
	95% CI		2.27–2.84	2.40–3.03	2.16–2.73	1.99–2.62	2.19–2.80
Total milk (mL/day) <sup>a</sup>	n		530	ND	ND	184	150
	Pred, mean		2.52	ND	ND	2.48	2.49
	95% CI		2.32–2.71	ND	ND	2.19–2.77	2.17–2.81
Total fizzy (mL/day) <sup>a</sup>	n		527	ND	ND	235	102
	Pred, mean		2.50	ND	ND	2.56	2.38
	95% CI		2.31–2.69	ND	ND	2.30–2.83	2.01–2.76
Total water (mL/day)	n		237	196	143	186	102
	Pred, mean		2.6	2.38	2.37	2.66	2.41
	95% CI		2.34–2.86	2.10–2.66	2.05–2.70	2.37–2.95	2.03–2.78
Total fluid intake (mL/day)	n		174	171	175	173	171
	Pred, mean		2.49	2.34	2.35	2.67	2.67
	95% CI		2.19–2.78	2.04–2.63	2.05–2.64	2.37–2.96	2.38–2.97
Muscle-invasive BC							
Total alc (mL/day)	n	68	33	30	31	31	31
	Pred, mean	4.85	4.52	4.81	4.28	5.56	4.13
	95% CI	4.20–5.50	3.61–5.44	3.87–5.75	3.35–5.21	4.61–6.50	5.08–3.18
Total hot fluids (mL/day)	n		52	46	42	41	43
	Pred, mean		5.11	5.14	4.39	4.33	4.47
	95% CI		4.39–5.84	4.38–5.90	3.59–5.19	3.51–5.14	3.69–5.26
Total fruit fluids (mL/day)	n		66	28	51	38	41
	Pred, mean		4.34	4.89	4.45	4.95	5.33
	95% CI		3.69–4.98	3.91–5.87	3.71–5.18	4.11–5.79	4.52–6.14
Total milk (mL/day) <sup>a</sup>	n		144	ND	ND	46	34
	Pred, mean		4.86	ND	ND	4.82	3.99
	95% CI		4.43–5.29	ND	ND	4.05–5.59	3.10–4.87
Total fizzy (mL/day) <sup>a</sup>	n		140	ND	ND	49	35
	Pred, mean		4.75	ND	ND	5.34	3.72**
	95% CI		4.31–5.19	ND	ND	4.59–6.08	2.85–4.59
Total water (mL/day)	n		45	66	38	54	21
	Pred, mean		4.76	4.91	4.19	4.9	4.52
	95% CI		3.98–5.53	4.27–5.55	3.35–5.04	4.19–5.60	3.37–5.67
Total fluid intake (mL/day)	n		45	46	45	44	44
	Pred, mean		4.84	5.21	4.99	4.27	4.24
	95% CI		4.07–5.61	4.44–5.98	4.22–5.77	3.49–5.05	3.45–5.03

BC, bladder cancer; CI, confidence interval; ND, no data.

<sup>a</sup>Over 60% of people reported the same amount of milk/fizzy intake, resulting in a 'first quintile' that stretches over the subsequent two.

\*\*Significant *P* value: *P* < 0.05.

\*\*\*Significant linear trend: *P* < 0.05.

the positive association between high total fluid intake and bladder cancer risk: exposure of the bladder wall to highly concentrated urine containing carcinogenic substances would increase the risk for developing bladder cancer (Braver *et al.*, 1987; Michaud *et al.*, 1999; Brinkman and Zeegers, 2008). Based on this hypothesis, expected results for a higher fluid intake would therefore lead to a higher amount of micturition, which would cause less (concentrated) exposure to the bladder wall, resulting in a decreased risk for BC. However, our results suggest an inverse effect on at least two of the clinicopathological factors of BC. In the first instance, higher fluid intake was significantly associated with lower age at diagnosis. This observed trend could be the natural decline in fluid intake with age – the elderly are known to drink less and are vulnerable to dehydration (Allison and Lobo, 2004).

However, this trend does not seem to explain our data when comparing our results with the total fluid intake of a subset of participants who were not diagnosed with BC. The age of non-BC participants seemed to only decrease in the highest quintile of fluid intake, instead of a trend throughout the quintiles (data not shown).

Another possible explanation for our results could be that the frequency of micturition is more important than total fluid intake (Silberstein and Parsons, 2010). This explanation is supported by a case-control done by Silverman *et al.*, in which an inverse trend in bladder cancer risk was found with higher frequencies of micturition, regardless of the amount of fluid intake (Silverman *et al.*, 2008). How this could affect the clinicopathological factors of BC, however, has not been researched yet as of now.



Unfortunately, the frequency of micturition was not covered by the BCPP questionnaires.

### The positive association between hot fluid intake and the size of largest tumour at diagnosis

Our results suggest that the consumption of hot fluids is associated with tumour size at diagnosis: the higher the hot fluid consumption, the larger the tumour at diagnosis. However, individual drink types within total hot fluid consumption do not show this trend. Based on the current literature, it is not yet clear how this association could be explained. Therefore, it is likely that these findings are random, as there is no obvious causative relation to explain these results. The size differences reported are within the same EAU clinicopathological category for tumour size and are not likely to influence clinical decision-making to the discussion

### Limitations and recommendations for future studies

This is the first study to have prospectively investigated fluid consumption and tumour characteristics at the time of diagnosis. Most studies focus on BC aetiology or prognosis but very few, if any, have examined clinically relevant factors at the time of diagnosis. Since these clinicopathological characteristics of the disease are the most important predictors of BC prognosis, examining them at the time of diagnosis provides insight into how fluid intake might influence outcomes. However, since this is a cross-sectional analysis without the use of control group, the observed trends in relation to clinicopathological characteristics of cancer patients are difficult to interpret due to possible reverse causality. Another limitation of this study is the way the amount of fluids from beverages was measured. This was not done by measuring the amount in millilitres, but by asking the number of consumptions based on the past year in a questionnaire at diagnosis. The amount of beverages consumed could therefore be overestimated or underestimated due to recall bias. Since beverage intake was measured in 'consumptions', the assumptions made for the millilitres per beverage could differ from reality. It should also be taken into consideration that all multilevel linear regressions were corrected for age, gender, and smoking status only; they were not corrected for possible concomitant CIS, since for a lot of cases ( $n = 356$ ) it was unclear whether a person had concomitant CIS. However, to estimate the impact this might have had, we did a sensitivity analysis for concomitant CIS in the NMIBC group. This analysis showed that there was a difference between patients with concomitant CIS and patients without concomitant CIS; the trends we observed appeared to be more clear in patients without concomitant CIS compared to patients with concomitant CIS, but we do not see this difference in the overall analyses results. This could be due to a large difference in patient size ( $n = 759$  without

CIS and  $n = 117$  with CIS). Therefore, our findings are more applicable towards patients without concomitant CIS. Furthermore, no statistical correction was done for multiple comparisons. Although there are a large number of comparisons due to different types of drinks, we focus our conclusions mainly on the quintile variables. Additionally, only groups with a very low  $P$ -value ( $P < 0.001$ ) were considered to support our explanations.

Based on these results, we recommend future research to investigate the association of hot fluid intake alongside (biological) mechanisms that could influence tumour growth. The effect of micturition frequency should also be further examined, as this could explain the effect we found for total beverage fluid intake and alcohol intake.

### Conclusion

The results of this study suggest an inverse association between alcohol intake and age at diagnosis, and a possible inverse association between total fluid intake and age at diagnosis. Although the results from this study are inconclusive towards the association of fluid intake from beverages and bladder cancer and should therefore be confirmed by future studies, they do support an association between fluid intake and clinicopathological factors important in determining prognosis for bladder cancer patients.

### Acknowledgements

#### Conflicts of interest

There are no conflicts of interest.

### References

- Allison SP, Lobo DN (2004). Fluid and electrolytes in the elderly. *Curr Opin Clin Nutr Metab Care* **7**:27–33.
- Al-Zalabani AH, Stewart KF, Wesselius A, Schols AM, Zeegers MP (2016). Modifiable risk factors for the prevention of bladder cancer: a systematic review of meta-analyses. *Eur J Epidemiol* **31**:811–851.
- Babjuk M, Böhle A, Burger M, Capoun O, Cohen D, Compérat EM, *et al.* (2017). EAU guidelines on non-muscle-invasive urothelial carcinoma of the bladder: update 2016. *Eur Urol* **71**:447–461.
- Berger A (1998). Science commentary: why wine might be less harmful than beer and spirits. *BMJ* **317**:844.
- Botteman MF, Pashos CL, Redaelli A, Laskin B, Hauser R (2003). The health economics of bladder cancer: a comprehensive review of the published literature. *Pharmacoeconomics* **21**:1315–1330.
- Braver DJ, Modan M, Chêtrit A, Lusky A, Braf Z (1987). Drinking, micturition habits, and urine concentration as potential risk factors in urinary bladder cancer. *J Natl Cancer Inst* **78**:437–440.
- Brinkman M, Zeegers MP (2008). Nutrition, total fluid and bladder cancer. *Scand J Urol Nephrol* **42** (Suppl 218):25–36.
- Bruemmer B, White E, Vaughan TL, Cheney CL (1997). Fluid intake and the incidence of bladder cancer among middle-aged men and women in a three-county area of western Washington. *Nutr Cancer* **29**:163–168.
- Bryan RT, Evans T, Dunn JA, Iqbal G, Bathers S, Collins SI, *et al.* (2015). A comparative analysis of the influence of gender, pathway delays, and risk factor exposures on the long-term outcomes of bladder cancer. *Eur Urol Focus* **1**:82–89.
- Burger M, Catto JW, Dalbagni G, Grossman HB, Herr H, Karakiewicz P, *et al.* (2013). Epidemiology and risk factors of urothelial bladder cancer. *Eur Urol* **63**:234–241.
- Cancer Research UK. cited 2016 November. <http://www.cancerresearchuk.org/health-professional/cancer-statistics/statistics-by-cancer-type/bladder-cancer>.

- Claude J, Kunze E, Frentzel-Beyme R, Paczkowski K, Schneider J, Schubert H (1986). Life-style and occupational risk factors in cancer of the lower urinary tract. *Am J Epidemiol* **124**:578–589.
- Cooksley CD, Avritscher EB, Grossman HB, Sabichi AL, Dinney CP, Pettaway C, Elting LS (2008). Clinical model of cost of bladder cancer in the elderly. *Urology* **71**:519–525.
- Djousse L, Schatzkin A, Chibnik LB, D'Agostino RB, Kreger BE, Ellison RC (2004). Alcohol consumption and the risk of bladder cancer in the framingham heart study. *J Natl Cancer Inst* **96**:1397–1400.
- Dunham LJ, Rabson AS, Stewart HL, Frank AS, Young JL (1968). Rates, interview, and pathology study of cancer of the urinary bladder in New Orleans, Louisiana. *J Natl Cancer Inst* **41**:683–709.
- Freund G (1979). Possible relationships of alcohol in membranes to cancer. *Cancer Res* **39**:2899–2901.
- Garro AJ, Lieber CS (1990). Alcohol and cancer. *Annu Rev Pharmacol Toxicol* **30**:219–249.
- Johansson SL, Cohen SM (1997). Epidemiology and etiology of bladder cancer. In: *Seminars in surgical oncology*. Vol. 13. No. 5. New York: John Wiley & Sons, Inc. pp. 291–298.
- Kaufman DS, Shipley WU, Feldman AS (2009). Bladder cancer. *Lancet* **374**:239–249.
- Kiemeny LA, Witjes JA, Verbeek AL, Heijbroek RP, Debruyne FM (1993). The clinical epidemiology of superficial bladder cancer. Dutch south-east cooperative urological group. *Br J Cancer* **67**:806–812.
- Kirkali Z, Chan T, Manoharan M, Algaba F, Busch C, Cheng L, et al. (2005). Bladder cancer: epidemiology, staging and grading, and diagnosis. *Urology* **66**:4–34.
- Kogevinas M, Trichopoulos D (2002). Urinary bladder cancer. In: Adami HO, Hunter D, Trichopoulos D, editors. *Textbook of cancer epidemiology*. New York: Oxford University Press. pp. 446–466.
- Kunze E, Chang-Claude J, Frentzel-Beyme R (1992). Life style and occupational risk factors for bladder cancer in Germany. A case-control study. *Cancer* **69**:1776–1790.
- Michaud DS, Spiegelman D, Clinton SK, Rimm EB, Curhan GC, Willett WC, Giovannucci EL (1999). Fluid intake and the risk of bladder cancer in men. *N Engl J Med* **340**:1390–1397.
- Millán-Rodríguez F, Chéchile-Toniolo G, Salvador-Bayarri J, Palou J, Vicente-Rodríguez J (2000). Multivariate analysis of the prognostic factors of primary superficial bladder cancer. *J Urol* **163**:73–78.
- NHS Digital (2016). Health Survey for England – 2015 Trend tables, Table 10. Online. <http://www.content.digital.nhs.uk/catalogue/PUB22616/HSE2015-Adult-trend-tbls.xlsx>. [Accessed 14 December 2016].
- Oyasu R, Hopp ML (1974). The etiology of cancer of the bladder. *Surg Gynecol Obstet* **138**:97–108.
- Pelucchi C, Negri E, Franceschi S, Talamini R, La Vecchia C (2002). Alcohol drinking and bladder cancer. *J Clin Epidemiol* **55**:637–641.
- Pelucchi C, Galeone C, Tramacere I, Bagnardi V, Negri E, Islami F, et al. (2011). Alcohol drinking and bladder cancer risk: a meta-analysis. *Ann Oncol* **23**:1586–1593.
- Ros MM, Bas Bueno-de-Mesquita HB, Büchner FL, Aben KK, Kampman E, Egevad L, et al. (2011). Fluid intake and the risk of urothelial cell carcinomas in the European Prospective Investigation into Cancer and Nutrition (EPIC). *Int J Cancer* **128**:2695–2708.
- Rübber H, Lutzeyer W, Fischer N, Deutz F, Lagrange W, Giani G (1988). Natural history and treatment of low and high risk superficial bladder tumors. *J Urol* **139**:283–285.
- Seitz HK, Simanowski UA (1988). Alcohol and carcinogenesis. *Annu Rev Nutr* **8**:99–119.
- Seitz HK, Pöschl G, Simanowski UA (1998). Alcohol and cancer. In: *Recent developments in alcoholism*. Boston, Massachusetts: Springer. pp. 67–95.
- Sievert KD, Amend B, Nagele U, Schilling D, Bedke J, Horstmann M, et al. (2009). Economic aspects of bladder cancer: what are the benefits and costs? *World J Urol* **27**:295–300.
- Silberstein JL, Parsons JK (2010). Evidence-based principles of bladder cancer and diet. *Urology* **75**:340–346.
- Silverman DT, Hartge P, Morrison AS, Devesa SS (1992). Epidemiology of bladder cancer. *Hematol Oncol Clin North Am* **6**:1–30.
- Silverman DT, Alguacil J, Rothman N, Real FX, Garcia-Closas M, Cantor KP, et al. (2008). Does increased urination frequency protect against bladder cancer? *Int J Cancer* **123**:1644–1648.
- Slattery ML, West DW, Robison LM (1988). Fluid intake and bladder cancer in Utah. *Int J Cancer* **42**:17–22.
- Sobin LH, Wittekind C, editors (2002). *Union Internationale Contre le Cancer. TNM classification of malignant tumors*. Vol. 6. New York: Wiley-Liss.
- The Chief Medical Officers' Low risk unit guidelines. [cited 2017 July]. [https://www.gov.uk/government/uploads/system/uploads/attachment\\_data/file/545937/UK\\_CMOs\\_report.pdf](https://www.gov.uk/government/uploads/system/uploads/attachment_data/file/545937/UK_CMOs_report.pdf).
- Vale C, Advanced Bladder Cancer (ABC) Meta-analysis Collaboration (2003). Neoadjuvant chemotherapy in invasive bladder cancer: a systematic review and meta-analysis. *Lancet* **361**:1927–1934.
- van Osch FH, Jochems SH, van Schooten FJ, Bryan RT, Zeegers MP (2016). Quantified relations between exposure to tobacco smoking and bladder cancer risk: a meta-analysis of 89 observational studies. *Int J Epidemiol* **45**:857–870.
- Vena JE, Graham S, Freudenheim J, Marshall J, Zielezny M, Swanson M, Sufrin G (1993). Drinking water, fluid intake, and bladder cancer in Western New York. *Arch Environ Health* **48**:191–198.
- Villanueva CM, Cantor KP, King WD, Jaakkola JJ, Cordier S, Lynch CF, et al. (2006). Total and specific fluid consumption as determinants of bladder cancer risk. *Int J Cancer* **118**:2040–2047.
- Zeegers MP, Tan FE, Verhagen AP, Weijenberg MP, van den Brandt PA (1999). Elevated risk of cancer of the urinary tract for alcohol drinkers: a meta-analysis. *Cancer Causes Control* **10**:445–451.
- Zeegers MP, Dorant E, Goldbohm RA, van den Brandt PA (2001a). Are coffee, tea, and total fluid consumption associated with bladder cancer risk? Results from The Netherlands cohort study. *Cancer Causes Control* **12**:231–238.
- Zeegers MP, Volovics A, Dorant E, Goldbohm RA, van den Brandt PA (2001b). Alcohol consumption and bladder cancer risk: results from the Netherlands cohort study. *Am J Epidemiol* **153**:38–41.
- Zeegers MP, Bryan RT, Langford C, Billingham L, Murray P, Deshmukh NS, et al. (2010). The west midlands bladder cancer prognosis programme: rationale and design. *BJU Int* **105**:784–788.
- Zhou J, Kelsey KT, Giovannucci E, Michaud DS (2014). Fluid intake and risk of bladder cancer in the nurses' health studies. *Int J Cancer* **135**:1229–1237.