

Response assessment after (chemo)radiotherapy for rectal cancer

Citation for published version (APA):

van der Sande, M. E., Beets, G. L., Hupkens, B. J. P., Breukink, S. O., Melenhorst, J., Bakers, F. C. H., Lambregts, D. M. J., Grabsch, H. I., Beets-Tan, R. G. H., & Maas, M. (2019). Response assessment after (chemo)radiotherapy for rectal cancer: Why are we missing complete responses with MRI and endoscopy? *European Journal of Surgical Oncology*, 45(6), 1011-1017.
<https://doi.org/10.1016/j.ejso.2018.11.019>

Document status and date:

Published: 01/06/2019

DOI:

[10.1016/j.ejso.2018.11.019](https://doi.org/10.1016/j.ejso.2018.11.019)

Document Version:

Publisher's PDF, also known as Version of record

Document license:

Taverne

Please check the document version of this publication:

- A submitted manuscript is the version of the article upon submission and before peer-review. There can be important differences between the submitted version and the official published version of record. People interested in the research are advised to contact the author for the final version of the publication, or visit the DOI to the publisher's website.
- The final author version and the galley proof are versions of the publication after peer review.
- The final published version features the final layout of the paper including the volume, issue and page numbers.

[Link to publication](#)

General rights

Copyright and moral rights for the publications made accessible in the public portal are retained by the authors and/or other copyright owners and it is a condition of accessing publications that users recognise and abide by the legal requirements associated with these rights.

- Users may download and print one copy of any publication from the public portal for the purpose of private study or research.
- You may not further distribute the material or use it for any profit-making activity or commercial gain
- You may freely distribute the URL identifying the publication in the public portal.

If the publication is distributed under the terms of Article 25fa of the Dutch Copyright Act, indicated by the "Taverne" license above, please follow below link for the End User Agreement:

www.umlib.nl/taverne-license

Take down policy

If you believe that this document breaches copyright please contact us at:

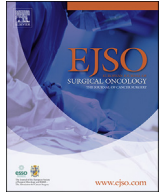
repository@maastrichtuniversity.nl

providing details and we will investigate your claim.



Contents lists available at ScienceDirect

European Journal of Surgical Oncology

journal homepage: www.ejso.com

Response assessment after (chemo)radiotherapy for rectal cancer: Why are we missing complete responses with MRI and endoscopy?



Marit E. van der Sande^a, Geerard L. Beets^{a, b}, Britt JP. Hupkens^{c, d},
Stéphanie O. Breukink^c, Jarno Melenhorst^c, Frans CH. Bakers^d, Doenja MJ. Lambregts^e,
Heike I. Grabsch^{b, f, g}, Regina GH. Beets-Tan^{b, e}, Monique Maas^{e, *}

^a Netherlands Cancer Institute, Department of Surgery, Plesmanlaan 121, 1066 CX, Amsterdam, the Netherlands

^b GROW School for Oncology and Developmental Biology, Universiteitssingel 40, 6229 ER, Maastricht, the Netherlands

^c Maastricht University Medical Center+, Department of Surgery, P. Debyelaan 25, 6229 HX, Maastricht, the Netherlands

^d Maastricht University Medical Center+, Department of Radiology, P. Debyelaan 25, 6229 HX, Maastricht, the Netherlands

^e Netherlands Cancer Institute, Department of Radiology, Plesmanlaan 121, 1066 CX, Amsterdam, the Netherlands

^f Maastricht University Medical Center+, Department of Pathology, P. Debyelaan 25, 6229 HX, Maastricht, the Netherlands

^g Leeds Institute of Medical Research at St. James's, University of Leeds, Pathology and Data Analytics, Beckett Street, Leeds, United Kingdom

ARTICLE INFO

Article history:

Received 9 November 2018

Accepted 23 November 2018

Available online 24 November 2018

Keywords:

Rectal cancer

Organ preservation

Complete response

Magnetic resonance imaging

Endoscopy

ABSTRACT

Purpose: To evaluate what features on restaging MRI and endoscopy led to a false clinical diagnosis of residual tumour in patients with a pathological complete response after rectal cancer surgery.

Methods: Patients with an unrecognized complete response after (chemo)radiotherapy were selected in a tertiary referral centre for rectal cancer treatment. An unrecognized complete response was defined as a clinical incomplete response at MRI and/or endoscopy with a pathological complete response of the primary tumour after surgery. The morphology of the tumour bed and the lymph nodes were evaluated on post-CRT T2-weighted MRI (T2-MRI) and diffusion weighted imaging (DWI). Post-CRT endoscopy images were evaluated for residual mucosal abnormalities. MRI and endoscopy features were correlated with histopathology.

Results: Thirty-six patients with an unrecognized complete response were included. Mucosal abnormalities were present at restaging endoscopy in 84%, mixed signal intensity on T2-MRI in 53%, an irregular aspect of the former tumour location on T2-MRI in 69%, diffusion restriction on DWI in 51% and suspicious lymph nodes in 25%.

Conclusions: Overstaging of residual tumour after (chemo)radiotherapy in rectal cancer is mainly due to residual mucosal abnormalities at endoscopy, mixed signal intensity or irregular fibrosis at T2-MRI, diffusion restriction at DWI and residual suspicious lymph nodes. Presence of these features is not definitely associated with residual tumour and in selected cases an extended waiting interval can be considered.

© 2018 Elsevier Ltd, BASO ~ The Association for Cancer Surgery, and the European Society of Surgical Oncology. All rights reserved.

* Corresponding author. Netherlands Cancer Institute, Department of Radiology, Post box 90203, 1006 BE, Amsterdam, the Netherlands.

E-mail addresses: m.vd.sande@nki.nl (M.E. van der Sande), g.beets@nki.nl (G.L. Beets), britthupkens@gmail.com (B.J.P. Hupkens), s.breukink@mumc.nl (S.O. Breukink), jarno.melenhorst@mumc.nl (J. Melenhorst), fch.bakers@mumc.nl (F.CH. Bakers), d.lambregts@nki.nl (D.M.J. Lambregts), h.grabsch@maastrichtuniversity.nl (H.I. Grabsch), r.beets-tan@nki.nl (R.G.H. Beets-Tan), moniquemaas@live.nl, m.maas@nki.nl (M. Maas).

Introduction

Fifteen to twenty percent of patients with rectal cancer present with a pathological complete response (pCR) after chemo-radiotherapy (CRT) and total mesorectal excision (TME) [1]. TME is associated with substantial morbidity and mortality and therefore the need for major surgery is questioned in good and complete responders. Moreover, it has raised interest in organ-preserving alternatives to major surgery, such as a local excision in near complete responders or a watch-and-wait policy in complete

responders [2–6]. Selection of patients who may benefit from organ preservation requires an accurate identification of complete responders. Main tools for response assessment have included clinical assessment with digital rectal examination, endoscopy and biopsy, and imaging such as MRI and endorectal ultrasound [4,5,7]. However, when used individually, none of these techniques are able to accurately predict pCR after CRT, due to overestimation of residual tumour [8–10]. The combined use of these techniques increases the diagnostic accuracy [11]. It is currently recommended to combine digital rectal examination, endoscopy and MRI (including diffusion weighted imaging (DWI)) [11]. This strategy is aimed at minimizing the risk of missing residual tumour and therefore minimizing the risk of undertreating patients. Mainly patients with a typical clinical complete response, fulfilling strict selection criteria that include whitening of the mucosa with teleangiectasia and mucosal integrity on endoscopy combined with absence of luminal and nodal disease on (DWI-)MRI, are considered for organ preservation [11,12]. However, due to these strict criteria up to 30% of the complete responders are not recognized at clinical response assessment, with the consequence that these patients undergo major surgery while organ preservation could be a possibility [11,13]. In order to reduce the number of unrecognized complete responders it is important to see what we can learn from these unrecognized complete responders. Specifically, we should evaluate whether there are distinct features on MRI and endoscopy that lead to the false diagnosis of residual tumour at response assessment, so that these pitfalls may be used as a teaching reference and to optimise the identification of complete responders in the future. Therefore, the aim of this study was to evaluate what features on restaging MRI and endoscopy led to a false diagnosis of residual tumour in patients with a pathological complete response after rectal cancer surgery.

Patients and methods

The need for informed patient consent was waived by the institutional ethics review board due to the retrospective nature of this study. This study was performed in a referral centre for organ preservation in rectal cancer (Maastricht University Medical Center+, Maastricht, the Netherlands), where restaging after neoadjuvant treatment was routinely performed. In our centre, all patients with a complete clinical response are offered organ preservation, and patients with an incomplete clinical response are offered standard treatment with resection. Criteria for a clinical complete response have been described previously [14]. However, some patients with an incomplete clinical response showed pathological complete response after resection, and could be considered ‘unrecognized’ clinical complete responses. These patients were included in the present retrospective study, providing they met the following inclusion criteria: (1) biopsy proven primary rectal cancer, (2) treatment with surgery after either a long course of CRT or a short course of radiotherapy (5 × 5Gy) followed by a prolonged waiting interval, between July 2006 and December 2015, (3) availability of restaging MRI (and endoscopic) examinations for response assessment after neoadjuvant treatment, and (4) complete response of the primary tumour at histopathology after surgery (ypT0). Referred patients had surgery in their primary hospital. Patients were excluded if they had surgery for persisting symptoms (e.g. obstructive stenosis).

Restaging MRI was routinely performed and available for all study patients. Until 2012, endoscopy was only performed upon indication (i.e. in case of a good response on imaging). From 2012 on, endoscopy was routinely performed as part of the response assessment in all patients.

Re-evaluation of MRI

All MR imaging was performed with a 1.5T system (Intera (Achieva) or Ingenia, Philips Medical Systems, Best, The Netherlands) using a phased array body coil. Sequences included T2-weighted MRI and diffusion-weighted MRI. Detailed sequence parameters of the sequences used during the study period are provided in the Supplementary File 1. The primary staging MRIs performed before treatment were also at the reader's disposal. Images were analysed by a single expert radiologist (M.M.) with 8 years of experience in reading rectal cancer MRI. As this study aimed at identifying features leading to unrecognized complete response and not at assessing diagnostic performance to assess response, the reader was aware that all patients had a pathological complete response in the resected specimen.

The following features were evaluated on the restaging T2-weighted images: signal intensity of the tumour bed, pattern of fibrosis, presence of rectal wall oedema, EMVI and lymph node morphology. The signal intensity of the tumour bed was scored to be either hypo-intense or consisting of mixed signal intensity. Pattern of fibrosis was scored as normalised rectal wall, minimal fibrosis, or regular/irregular full-thickness fibrosis [15]. Fig. 1 shows examples of the MRI features that were evaluated. Lymph node morphology was assessed by evaluating the border, contour, the signal intensity heterogeneity of the nodes and the presence of fibrosis within the nodes. Examples of irregular nodes are shown in Fig. 2.

On restaging DWI-MRI, the presence and distribution (focal or diffuse) of diffusion restriction (high signal intensity on b1000 DW-images and corresponding low signal on the apparent diffusion coefficient maps) within the tumour bed were recorded.

Re-evaluation of endoscopic images

Endoscopy with a flexible endoscope was performed after a phosphate enema, by one of six surgeons who were specialized in endoscopic response assessment. The digitally stored endoscopy images (white light images only) were re-evaluated for this study by a single experienced surgeon (G.B.) with 12 years of experience in restaging endoscopy. The presence of a white scar, a flat ulcer, a deep ulcer with irregular borders, polypoid tissue or gross tumour mass was scored. Examples of these endoscopic findings are shown in Fig. 3. If biopsies were taken at the time of endoscopy, results were also provided to the reader and taken into account during scoring. Similarly to MRI, the reader was aware that all patients had a pathological complete response in the resected specimen.

Correlation with histopathology

Surgical specimens were assessed according to international guidelines [16]. The histopathology reports of the surgical specimens were reviewed to correlate histopathology features with MRI and endoscopic features. The presence of the following histopathologic features were scored: dysplasia, inflammation, fibrous tissue, acellular mucin, ulceration or calcifications. Examples of these histopathological findings can be found in the Supplementary file 2.

Statistical analysis

Statistical analyses were performed with SPSS Statistics 22 (IBM, Armonk, NY). Baseline data were collected for all patients and included age, sex, baseline clinical staging, neoadjuvant therapy, type of surgical procedure and histopathological staging. Descriptive statistics were calculated for the baseline characteristics and MRI, endoscopic and histopathologic features.

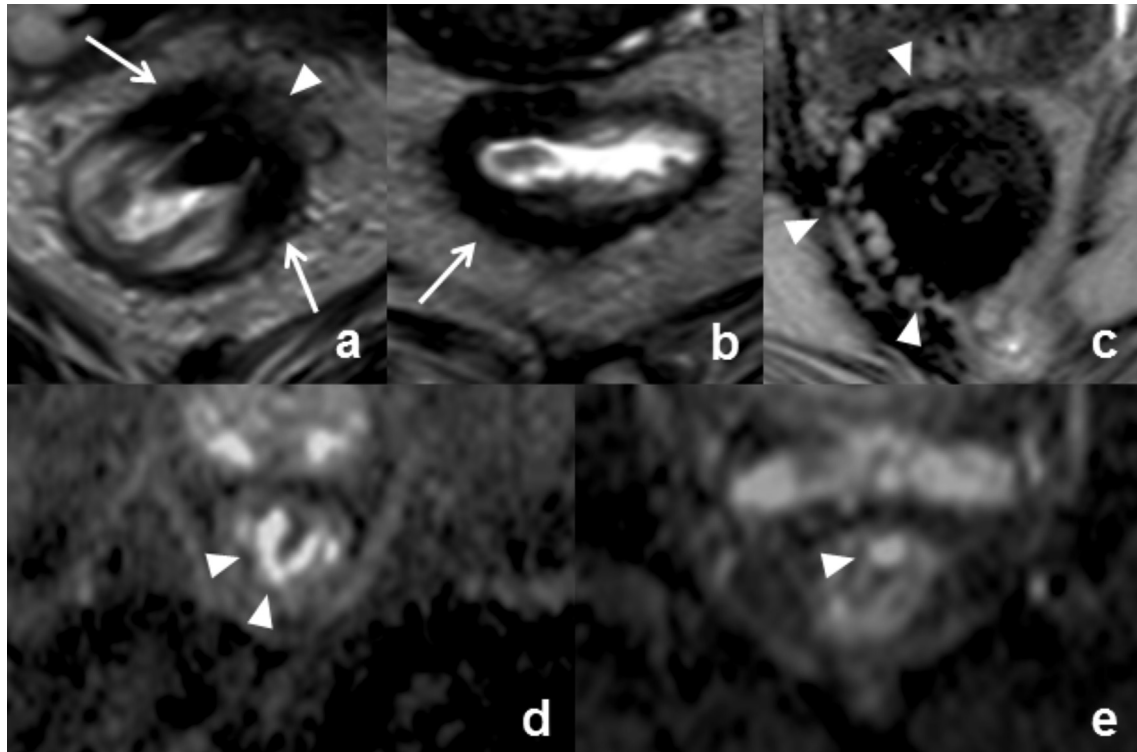


Fig. 1. Examples of main pitfalls in restaging MRI in ypT0 patients leading to overstaging of residual tumour. Mixed signal intensity (white arrowhead) within an area of fibrosis (arrows) (a), thick fibrosis in (b) and irregular fibrosis (white arrowheads) in (c) at T2-weighted MRI; massive diffusion restriction (d) and focal diffusion restriction (e) at DWI-MRI.

Results

Study population

Thirty-nine rectal cancer patients with pathological complete response of the primary tumour (ypT0) after surgery were considered for inclusion. Three patients were excluded because they had an indication for surgery irrespective of the clinical response of the tumour for the following reasons: stenosis, incontinence and rectal stent. In total, 36 patients were included (24 men, 12 women; mean age at diagnosis 64 ± 13 years, for details see Table 1). Of the 36 patients, 8 patients had nodal metastases at histopathology (7 ypN1, 1 ypN2). These patients are separately described on their lymph node assessment below. The median interval from completion of (chemo)radiotherapy to response assessment was 8 weeks (IQR 8–17 weeks). Median interval from response assessment to resection was 28 days (IQR 15–36 days). Twenty (56%) patients underwent low anterior resection, 13 (36%) patients had an abdominoperineal resection and 3 (8%) patients had a full-thickness local excision. The 3 patients with local excision all had a disease-free follow-up of >3 years, and were therefore considered to be ypT0N0.

T2-weighted MRI

Overall, in 26 (78%) patients features of residual luminal tumour were present on the restaging T2-weighted MRI. Mixed signal intensity was present in 19 (53%) patients. Full-thickness or irregularly shaped fibrosis was seen in 25 (69%) patients. EMVI was recorded in 3 (8%) of the patients and oedema in 17 (47%) patients.

Diffusion-weighted MRI

In 33 out of 36 patients a DWI sequence was available. Sixteen

(49%) patients showed no residual diffusion restriction. In the remaining 17 patients, either focal diffusion restriction ($n = 14$, 42%) or diffuse diffusion restriction ($n = 3$, 9%) was found at reevaluation.

Endoscopy

Restaging endoscopy was performed in 19 (53%) of the 36 patients. Only 3 patients (16%) presented with a flat scar without mucosal abnormalities. Polypoid tissue was present in 4 (21%) patients, a flat ulcer in 5 (26%) patients, an ulcer with irregular borders in 6 (32%) patients and gross residual tumour was present in 1 (5%) patient. Biopsies were taken in 10 patients. In 4 patients, this led to a suspected residual tumour: 3 patients showed high grade dysplasia and one biopsy adenocarcinoma, while in the resection specimen no adenocarcinoma was found in any of these patients.

Lymph nodes

In the 28 patients with ypT0N0, suspected residual mesorectal nodal metastasis was present in 7 (25%) patients, these nodes showed fibrosis and/or a spiculated border. In the 8 patients with ypT0N+, 5 (71%) patients also showed a fibrotic appearance or spiculated border of their nodes.

One of the patients with ypT0N0 showed a suspicious extramesorectal node in the right obturator area at MRI and underwent a TME resection with removal of the lateral node. The lateral node was negative on histology.

Correlation of imaging and endoscopy features with histopathology

Correlations between histopathology findings and MRI and endoscopic features are presented in Tables 2 and 3. All patients had a pathological complete response of the primary tumour

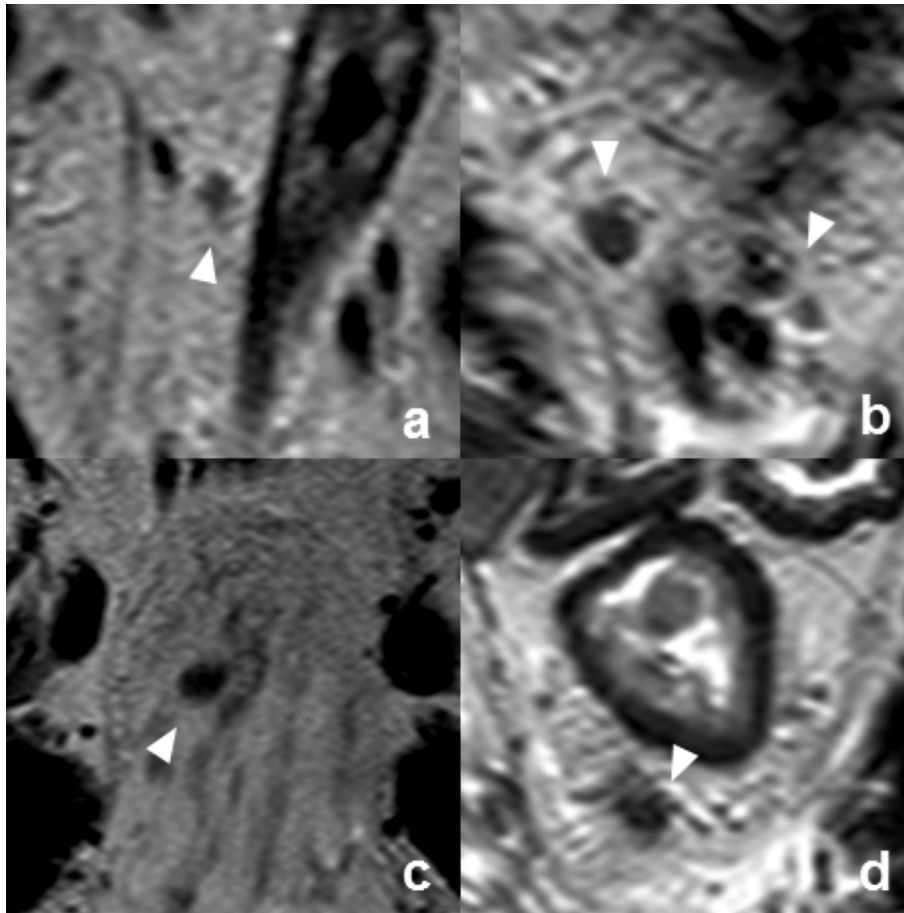


Fig. 2. Irregular nodes in yN0 patients (a+b) and in yN+ (c + d) patients.

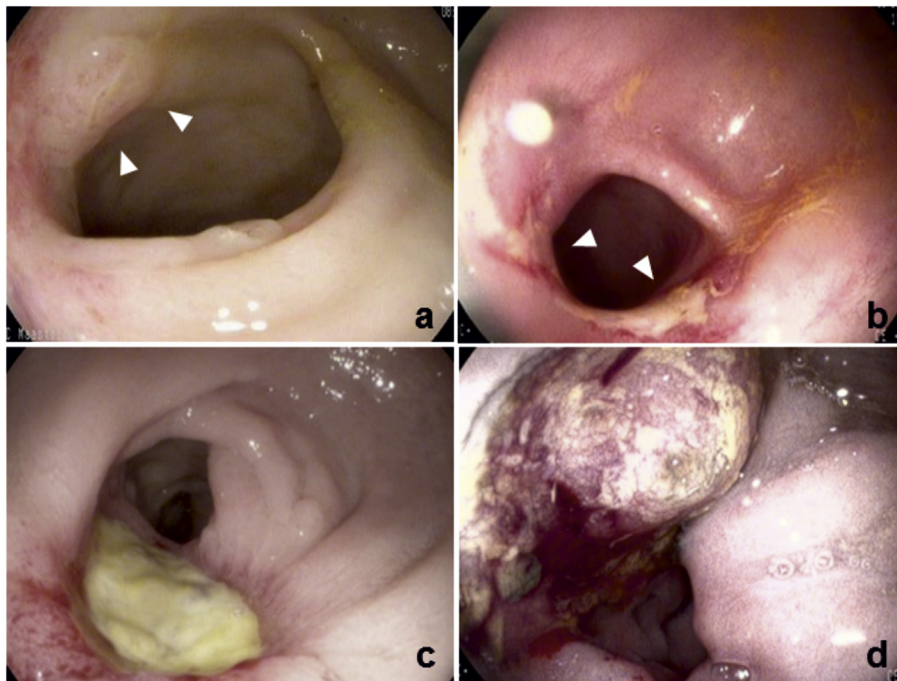


Fig. 3. Examples of mucosal abnormalities at restaging endoscopy in ypT0 patients. A red scar with an adenomatous nodule (white arrowheads) (a), a scar with residual flat mucosal ulceration (b), deep mucosal ulceration with fibrinous tissue (c) and gross residual mass (d). All patients had ypT0 at histopathology after rectal cancer surgery.

Table 1
Patient characteristics (n = 36).

Characteristic	Number of patients
Sex	
Male	24 (67%)
Female	12 (33%)
Mean age, in years (SD)	64 (13)
cT stage	
T1-2	7 (19%)
T3ab	14 (39%)
T3cd	9 (25%)
T4	6 (17%)
cN stage	
N0	6 (17%)
N1	8 (22%)
N2	22 (61%)
Neoadjuvant therapy	
CRT (50.0–50.4Gy)	34 (94%)
Short course RT + waiting interval (25Gy)	2 (6%)
Surgical procedure	
LAR	20 (56%)
APR	13 (36%)
FTLE	3 (8%)
Median CRT-restaging interval, in weeks (IQR)	8 (8–17)
Median restaging-resection interval, in days (IQR)	27 (15–36)

Abbreviations: CRT = chemoradiotherapy, RT = radiotherapy, LAR = low anterior resection, APR = abdominoperineal resection, FTLE = full thickness local excision, IQR = interquartile range.

(ypT0) and in six (19%) specimens foci of low- or high grade dysplasia at the former tumour location were found. Histopathology reports describe fibrosis in 30 (83%) patients, ulceration in 19 (53%) patients and inflammation in 18 (50%) patients. Acellular mucin was present in 5 (14%) surgical specimens and dystrophic calcifications were seen in 5 (14%) specimens. Fibrous tissue was more frequently found in patient with mixed signal intensity on T2-weighted MRI than in patients with homogeneous signal (100% vs. 65%). Microscopic ulceration was also found more frequently in patients with mixed T2-weighted signal (74% vs. 29%) and in patients with a high signal on the DWI-MRI (77% vs. 38%), see [Table 2](#). Presence of acellular mucin or calcifications did not differ between

patients with and without signs of residual disease on MRI. Dysplasia was found more frequently in patients with clinically suspected residual tumour at endoscopy than in patients without suspected residual tumour (100% vs. 17%).

Discussion

The selection of patients with a complete response for organ preservation remains a challenge, with overstaging of residual tumour being the main source of error. This can lead to not recognizing patients with a complete response, who subsequently have a major resection of the rectum while they could have been treated with organ preservation. The goal of this study was to evaluate what features on restaging MRI and endoscopy led to a false diagnosis of residual tumour in these unrecognized complete responses. Overall, the commonest pitfalls were mucosal abnormalities on endoscopy, mixed signal or irregular aspect on T2-weighted MRI and a residual high signal on DWI-MRI. Overstaging of nodes was another important pitfall. For some of the pitfalls on MRI and endoscopy a potential substrate was found when reviewing histopathology.

Mucosal abnormalities such as an ulcer or polypoid tissue were present in the majority (88%) of the unrecognized complete responders at restaging endoscopy. These findings are in line with the study by Nahas et al. [13], who showed that 89% of the patients with an unexpected pCR after TME resection showed gross mucosal abnormalities at restaging endoscopy. Two other studies showed that in 61–74% of the patients downstaged to ypT0, macroscopic residual mucosal abnormalities were found in the surgical specimen [17,18]. Routine biopsies have been advocated to distinguish residual tumour from healing mucosa or residual adenoma. However, because of sampling errors there is a substantial risk for false negative biopsies [19]. In the present study there is even a false positive finding: one patient had adenocarcinoma in the biopsy taken at restaging endoscopy while having a pCR at resection only two weeks later.

Similar to endoscopy, T2-weighted MRI tends to overestimate the presence of residual tumour, mainly because of the presence of

Table 2
Frequency of histological features per MRI feature (n = 36).

	Total	Mixed T2-weighted signal		Full thickness/irregular fibrosis		Diffusion restriction		Oedema		EMVI	
		no	yes	no	yes	no	yes	no	yes	no	yes
Dysplasia	6	4 (23.5)	2 (10.5)	2 (18.2)	4 (16.0)	3 (18.8)	3 (17.6)	5 (27.8)	1 (5.9)	6 (18.2)	- (0.0)
Fibrous tissue	30	11 (64.7)	19 (100.0)	7 (63.6)	23 (92.0)	11 (68.8)	16 (94.1)	14 (77.8)	15 (88.2)	27 (81.8)	3 (100.0)
Inflammation	18	5 (29.4)	13 (68.4)	3 (27.3)	15 (60.0)	6 (37.5)	11 (64.7)	7 (38.9)	11 (64.7)	16 (48.5)	2 (66.7)
Acellular mucin	5	1 (5.9)	4 (21.1)	2 (18.2)	3 (12.0)	1 (6.3)	4 (23.5)	1 (5.6)	4 (23.5)	3 (9.1)	2 (66.7)
Ulceration	19	5 (29.4)	14 (73.7)	3 (27.3)	16 (64.0)	6 (37.5)	13 (76.5)	6 (33.3)	12 (70.6)	17 (51.5)	2 (66.7)
Dystrophic calcifications	5	2 (11.8)	3 (15.8)	- (0.0)	5 (20.0)	1 (6.3)	3 (17.6)	1 (5.6)	4 (23.5)	5 (15.2)	- (0.0)

Abbreviations: DWI = diffusion weighted imaging; EMVI = extramural venous invasion Numbers between parentheses are percentages.

Table 3
Frequency of histological features per endoscopic finding (n = 19).

	Total	Scar		Flat ulcer		Ulcer with irregular border		Polypoid tissue		Residual tumour	
		no	yes	no	yes	no	yes	no	yes	no	yes
Dysplasia	4	4 (25.0)	- (0.0)	3 (21.4)	1 (20.0)	3 (23.1)	1 (16.7)	3 (20.0)	1 (25.0)	3 (16.7)	1 (100.0)
Fibrous tissue	17	15 (93.8)	2 (66.7)	12 (85.7)	5 (100.0)	12 (92.3)	5 (83.3)	13 (86.7)	4 (100.0)	16 (88.9)	1 (100.0)
Inflammation	8	7 (43.8)	1 (33.3)	5 (35.7)	3 (60.0)	4 (30.8)	4 (66.7)	8 (53.3)	- (0.0)	8 (44.4)	- (0.0)
Acellular mucin	2	2 (12.5)	- (0.0)	1 (7.1)	1 (20.0)	1 (7.7)	1 (16.7)	2 (13.3)	- (0.0)	2 (11.1)	- (0.0)
Ulceration	10	9 (56.3)	1 (33.3)	6 (42.9)	4 (80.0)	5 (38.5)	5 (83.3)	10 (66.7)	- (0.0)	10 (55.6)	- (0.0)
Dystrophic calcifications	4	4 (25.0)	- (0.0)	3 (21.4)	1 (20.0)	2 (15.4)	2 (33.3)	3 (20.0)	1 (25.0)	4 (22.2)	- (0.0)

Numbers between parentheses are percentages.

residual wall thickening at the former tumour location [9]. If this residual wall thickening shows a dark homogeneous fibrotic aspect, experienced radiologists will generally be able to identify this as a complete response. However, when the residual lesion shows a mixed signal, radiologists will interpret this as a sign of residual tumour. Although mixed signal is most often associated with residual tumour, this is not always the case. In patients with a pathological complete response this heterogeneous wall thickening is probably a mixture of fibrosis and oedema in the healing phase of the bowel wall, that in due time will proceed to full thickness homogeneous dark fibrosis. The addition of diffusion-weighted imaging to standard T2-weighted imaging can help to differentiate between scar tissue and residual tumour, as areas with residual diffusion restriction are suspicious for residual tumour [20]. A meta-analysis on the assessment of response to CRT in rectal cancer patients showed that the addition of DWI results in a significantly improved sensitivity from 50% with standard T2-weighted sequences to 84% with DWI [9]. In the present study approximately half of the unrecognized complete responders showed residual (focal) diffusion signal abnormalities. Probably, this can be explained by interpretation errors caused by persisting T2 signal from the rectal wall which is not entirely suppressed at DWI. Due to the small size of these foci, evaluation on the quantitative ADC map is difficult and leads to failure in recognizing these areas as T2 shine through [21]. Histological reactive changes, e.g. an ulcer, may cause a false high signal leading to interpretation errors. Similar interpretation pitfalls have been reported for DWI-MRI after transanal endoscopic microsurgery [22,23].

Another reason for not recognizing a complete response was the erroneous interpretation of a residual lymph node as malignant. A common feature in overstaged lymph nodes was the presence of border irregularity, a feature that is also found in many malignant lymph nodes. While in primary staging the accuracy for nodal staging improves by the addition of morphological criteria to size criteria [24,25], for nodal response assessment after neoadjuvant treatment the use of morphological criteria can be confusing as both normal and metastatic nodes can show abnormal nodal morphology [26,27]. With a complete response in the primary tumour, there is a low a-priori risk of about 3–5% for residual nodal disease [1]. Therefore, in order to avoid needless surgery, it is worth considering (in patients with a clinical complete response in the primary tumour) to observe small residual irregular nodes for an additional period, especially when the lymph nodes have decreased in size. In many centres, organ preservation is only considered if a patient presents with a typical clinical complete response: a white scar with absence of mucosal abnormalities on endoscopy and no signs of residual luminal and nodal disease on MRI. The results of this study show that patients with mixed T2 signal, residual diffusion restriction, mucosal abnormalities or irregular lymph nodes do not necessarily have residual disease. In selected patients an extended waiting interval can be considered to provide a more convincing picture on whether or not there is a complete response. In our current clinical practice we have implemented an extended waiting interval in patients who show a 'near-CR' at first response assessment 8–10 weeks after neoadjuvant treatment, to allow for further regression to a complete response [28]. How many and which combinations of the abovementioned equivocal features allow for safe extension of the waiting interval remains unclear. The more of these features are present, the less likely it seems a patient is going to have a complete response. This should be further evaluated.

Our study has some limitations. First, during the long study period the response evaluation strategy after (chemo)radiotherapy gradually changed, which led to missing endoscopy images in the early patients. Second, the time between response assessment and

resection was rather long in some patients, so it is possible that patients did not have a pathological complete response during response assessment, but developed a complete response during the interval to surgery and thus were actually not overstaged. Third, histopathology reports were used to compare imaging findings with histological findings. By using standard clinical reports rather than doing a reassessment of histopathology it is possible that histological reactive changes were not always reported when present. Last, as we only included patients with a pathological complete response of the primary tumour and did not have a control group, we cannot draw conclusions about the incidence of the discussed features on patients with true residual tumour, which would provide insight into the prevalence of these features and their clinical impact.

Conclusion

Overstaging of residual tumour after CRT is mainly caused by the presence of residual mucosal abnormalities at endoscopy, mixed signal or irregular fibrosis at T2-weighted MRI, focal diffusion restriction at diffusion-weighted MRI and residual irregular nodes. Knowledge of these pitfalls can help clinicians to improve the selection of complete responders. In patients with a very good clinical response, the abovementioned features should not be regarded as unequivocal signs of residual tumour and an extended waiting interval followed by a reassessment can be considered to provide a more convincing picture of the presence of a complete response. Advances in imaging techniques, endoscopy and tumour markers will in the future hopefully overcome the challenges in response assessment.

Competing interests

The authors declare that they have no competing interests.

Acknowledgements

No acknowledgements.

Appendix A. Supplementary data

Supplementary data to this article can be found online at <https://doi.org/10.1016/j.ejso.2018.11.019>.

References

- [1] Maas M, Nelemans PJ, Valentini V, Das P, Rodel C, Kuo LJ, et al. Long-term outcome in patients with a pathological complete response after chemoradiation for rectal cancer: a pooled analysis of individual patient data. *Lancet Oncol* 2010;11(9):835–44.
- [2] Appelt AL, Ploen J, Harling H, Jensen FS, Jensen LH, Jorgensen JC, et al. High-dose chemoradiotherapy and watchful waiting for distal rectal cancer: a prospective observational study. *Lancet Oncol* 2015;16(8):919–27.
- [3] Garcia-Aguilar J, Renfro LA, Chow OS, Shi Q, Carrero XW, Lynn PB, et al. Organ preservation for clinical T2N0 distal rectal cancer using neoadjuvant chemoradiotherapy and local excision (ACOSOG Z6041): results of an open-label, single-arm, multi-institutional, phase 2 trial. *Lancet Oncol* 2015;16(15):1537–46.
- [4] Maas M, Beets-Tan RG, Lambregts DM, Lammering G, Nelemans PJ, Engelen SM, et al. Wait-and-see policy for clinical complete responders after chemoradiation for rectal cancer. *J Clin Oncol : Off J Am Soc Clin Oncol* 2011;29(35):4633–40.
- [5] Renehan AG, Malcomson L, Emsley R, Gollins S, Maw A, Myint AS, et al. Watch-and-wait approach versus surgical resection after chemoradiotherapy for patients with rectal cancer (the OnCoRe project): a propensity-score matched cohort analysis. *Lancet Oncol* 2016;17(2):174–83.
- [6] Smith JD, Ruby JA, Goodman KA, Saltz LB, Guillem JG, Weiser MR, et al. Nonoperative management of rectal cancer with complete clinical response after neoadjuvant therapy. *Ann Surg* 2012;256(6):965–72.
- [7] Habr-Gama A, Perez RO, Nadalin W, Sabbaga J, Ribeiro Jr U, Silva e Sousa Jr AH,

- et al. Operative versus nonoperative treatment for stage 0 distal rectal cancer following chemoradiation therapy: long-term results. *Ann Surg* 2004;240(4): 711–7. discussion 7–8.
- [8] Maffione AM, Marzola MC, Capirci C, Colletti PM, Rubello D. Value of (18)F-FDG PET for predicting response to neoadjuvant therapy in rectal cancer: systematic review and meta-analysis. *AJR Am J Roentgenol* 2015;204(6): 1261–8.
 - [9] van der Paardt MP, Zagers MB, Beets-Tan RG, Stoker J, Bipat S. Patients who undergo preoperative chemoradiotherapy for locally advanced rectal cancer restaged by using diagnostic MR imaging: a systematic review and meta-analysis. *Radiology* 2013;269(1):101–12.
 - [10] Pastor C, Subtil JC, Sola J, Baixauli J, Beorlegui C, Arba L, et al. Accuracy of endoscopic ultrasound to assess tumor response after neoadjuvant treatment in rectal cancer: can we trust the findings? *Dis Colon Rectum* 2011;54(9): 1141–6.
 - [11] Maas M, Lambregts DM, Nelemans PJ, Heijnen LA, Martens MH, Leijtens JW, et al. Assessment of clinical complete response after chemoradiation for rectal cancer with digital rectal examination, endoscopy, and MRI: selection for organ-saving treatment. *Ann Surg Oncol* 2015;22(12):3873–80.
 - [12] Habr-Gama A, Perez RO, Wynn G, Marks J, Kessler H, Gama-Rodrigues J. Complete clinical response after neoadjuvant chemoradiation therapy for distal rectal cancer: characterization of clinical and endoscopic findings for standardization. *Dis Colon Rectum* 2010;53(12):1692–8.
 - [13] Nahas SC, Rizkallah Nahas CS, Sparapan Marques CF, Ribeiro Jr U, Cotti GC, Imperiale AR, et al. Pathologic complete response in rectal cancer: can we detect it? Lessons learned from a proposed randomized trial of watch-and-wait treatment of rectal cancer. *Dis Colon Rectum* 2016;59(4):255–63.
 - [14] Martens MH, Maas M, Heijnen LA, Lambregts DM, Leijtens JW, Stassen LP, et al. Long-term outcome of an organ preservation program after neoadjuvant treatment for rectal cancer. *J Natl Cancer Inst* 2016;108(12).
 - [15] Lambregts DM, Maas M, Bakers FC, Cappendijk VC, Lammering G, Beets GL, et al. Long-term follow-up features on rectal MRI during a wait-and-see approach after a clinical complete response in patients with rectal cancer treated with chemoradiotherapy. *Dis Colon Rectum* 2011;54(12):1521–8.
 - [16] Glynne-Jones R, Wyrwicz L, Tiret E, Brown G, Rodel C, Cervantes A, et al. Rectal cancer: ESMO Clinical Practice Guidelines for diagnosis, treatment and follow-up. *Ann Oncol : Off J Eur Soc Med Oncol* 2017;28(suppl_4):iv22–40.
 - [17] Smith FM, Chang KH, Sheahan K, Hyland J, O'Connell PR, Winter DC. The surgical significance of residual mucosal abnormalities in rectal cancer following neoadjuvant chemoradiotherapy. *Br J Surg* 2012;99(7):993–1001.
 - [18] Smith FM, Wiland H, Mace A, Pai RK, Kalady MF. Clinical criteria underestimate complete pathological response in rectal cancer treated with neoadjuvant chemoradiotherapy. *Dis Colon Rectum* 2014;57(3):311–5.
 - [19] Perez RO, Habr-Gama A, Pereira GV, Lynn PB, Alves PA, Proscurshim I, et al. Role of biopsies in patients with residual rectal cancer following neoadjuvant chemoradiation after downsizing: can they rule out persisting cancer? *Colorectal Dis : Off J Assoc Coloproctol Great Britain and Ireland* 2012;14(6): 714–20.
 - [20] Lambregts DM, Vandecaveye V, Barbaro B, Bakers FC, Lambrecht M, Maas M, et al. Diffusion-weighted MRI for selection of complete responders after chemoradiation for locally advanced rectal cancer: a multicenter study. *Ann Surg Oncol* 2011;18(8):2224–31.
 - [21] Lambregts DMJ, van Heeswijk MM, Delli Pizzi A, van Elderen SGC, Andrade L, Peters N, et al. Diffusion-weighted MRI to assess response to chemoradiotherapy in rectal cancer: main interpretation pitfalls and their use for teaching. *Eur Radiol* 2017;27(10):4445–54.
 - [22] Hupkens BJP, Maas M, Martens MH, Deserno W, Leijtens JWA, Nelemans PJ, et al. MRI surveillance for the detection of local recurrence in rectal cancer after transanal endoscopic microsurgery. *Eur Radiol* 2017;27(12):4960–9.
 - [23] Lambregts DM, Lahaye MJ, Heijnen LA, Martens MH, Maas M, Beets GL, et al. MRI and diffusion-weighted MRI to diagnose a local tumour regrowth during long-term follow-up of rectal cancer patients treated with organ preservation after chemoradiotherapy. *Eur Radiol* 2016;26(7):2118–25.
 - [24] Kim JH, Beets GL, Kim MJ, Kessels AG, Beets-Tan RG. High-resolution MR imaging for nodal staging in rectal cancer: are there any criteria in addition to the size? *Eur J Radiol* 2004;52(1):78–83.
 - [25] Brown G, Richards CJ, Bourne MW, Newcombe RG, Radcliffe AG, Dallimore NS, et al. Morphologic predictors of lymph node status in rectal cancer with use of high-spatial-resolution MR imaging with histopathologic comparison. *Radiology* 2003;227(2):371–7.
 - [26] Heijnen LA, Maas M, Beets-Tan RG, Berkhof M, Lambregts DM, Nelemans PJ, et al. Nodal staging in rectal cancer: why is restaging after chemoradiation more accurate than primary nodal staging? *Int J Colorectal Dis* 2016;31(6): 1157–62.
 - [27] Perez RO, Pereira DD, Proscurshim I, Gama-Rodrigues J, Rawet V, Sao Juliao GP, et al. Lymph node size in rectal cancer following neoadjuvant chemoradiation—can we rely on radiologic nodal staging after chemoradiation? *Dis Colon Rectum* 2009;52(7):1278–84.
 - [28] Hupkens BJP, Maas M, Martens MH, van der Sande ME, Lambregts DMJ, Breukink SO, et al. Organ preservation in rectal cancer after chemoradiation: should we extend the observation period in patients with a clinical near-complete response? *Ann Surg Oncol* 2018;25(1):197–203.