

# Refining success of cardiac resynchronization therapy using a simple score predicting the amount of reverse ventricular remodelling: results from the Markers and Response to CRT (MARC) study

## Citation for published version (APA):

Maass, A. H., Vernooy, K., Wijers, S. C., van 't Sant, J., Cramer, M. J., Meine, M., Allaart, C. P., De Lange, F. J., Prinzen, F. W., Gerritse, B., Erdtsieck, E., Scheerder, C. O. S., Hill, M. R. S., Scholten, M., Kloosterman, M., ter Horst, I. A. H., Voors, A. A., Vos, M. A., Rienstra, M., & Van Gelder, I. C. (2018). Refining success of cardiac resynchronization therapy using a simple score predicting the amount of reverse ventricular remodelling: results from the Markers and Response to CRT (MARC) study. *EP Europace*, 20(2), E1-E10. <https://doi.org/10.1093/europace/euw445>

## Document status and date:

Published: 01/02/2018

## DOI:

[10.1093/europace/euw445](https://doi.org/10.1093/europace/euw445)

## Document Version:

Publisher's PDF, also known as Version of record

## Document license:

Taverne

## Please check the document version of this publication:

- A submitted manuscript is the version of the article upon submission and before peer-review. There can be important differences between the submitted version and the official published version of record. People interested in the research are advised to contact the author for the final version of the publication, or visit the DOI to the publisher's website.
- The final author version and the galley proof are versions of the publication after peer review.
- The final published version features the final layout of the paper including the volume, issue and page numbers.

[Link to publication](#)

## General rights

Copyright and moral rights for the publications made accessible in the public portal are retained by the authors and/or other copyright owners and it is a condition of accessing publications that users recognise and abide by the legal requirements associated with these rights.

- Users may download and print one copy of any publication from the public portal for the purpose of private study or research.
- You may not further distribute the material or use it for any profit-making activity or commercial gain
- You may freely distribute the URL identifying the publication in the public portal.

If the publication is distributed under the terms of Article 25fa of the Dutch Copyright Act, indicated by the "Taverne" license above, please follow below link for the End User Agreement:

[www.umlib.nl/taverne-license](http://www.umlib.nl/taverne-license)

## Take down policy

If you believe that this document breaches copyright please contact us at:

[repository@maastrichtuniversity.nl](mailto:repository@maastrichtuniversity.nl)

providing details and we will investigate your claim.

Download date: 31 Jan. 2023

# Refining success of cardiac resynchronization therapy using a simple score predicting the amount of reverse ventricular remodelling: results from the Markers and Response to CRT (MARC) study

Alexander H. Maass<sup>1\*†</sup>, Kevin Vernooij<sup>2†</sup>, Sofieke C. Wijers<sup>3†</sup>, Jetske van 't Sant<sup>3†</sup>, Maarten J. Cramer<sup>3</sup>, Mathias Meine<sup>3</sup>, Cornelis P. Allaart<sup>4</sup>, Frederik J. De Lange<sup>5</sup>, Frits W. Prinzen<sup>6</sup>, Bart Gerritse<sup>7</sup>, Erna Erdtseick<sup>8</sup>, Coert O.S. Scheerder<sup>7,9</sup>, Michael R.S. Hill<sup>10</sup>, Marcoen Scholten<sup>11</sup>, Mariëlle Kloosterman<sup>1</sup>, Iris A.H. ter Horst<sup>3</sup>, Adriaan A. Voors<sup>1</sup>, Marc A. Vos<sup>12†</sup>, Michiel Rienstra<sup>1†</sup>, and Isabelle C. Van Gelder<sup>1†</sup>

<sup>1</sup>Department of Cardiology, Thoraxcenter, University of Groningen, University Medical Center Groningen, Hanzeplein 1, 9700RB Groningen, The Netherlands; <sup>2</sup>Department of Cardiology, Maastricht University Medical Center, Maastricht, The Netherlands; <sup>3</sup>Department of Cardiology, University Medical Center Utrecht, Utrecht, The Netherlands; <sup>4</sup>Department of Cardiology, VU University Medical Center, Amsterdam, The Netherlands; <sup>5</sup>Department of Cardiology, Academic Medical Center, Amsterdam, The Netherlands; <sup>6</sup>Department of Physiology, University of Maastricht, Maastricht, The Netherlands; <sup>7</sup>Medtronic Bakken Research Center, Maastricht, The Netherlands; <sup>8</sup>Center for Translational Molecular Medicine, Utrecht, The Netherlands; <sup>9</sup>Currently Employed by Medtronic Trading NL, Eindhoven, The Netherlands; <sup>10</sup>Medtronic Inc, Minneapolis, MN, USA; <sup>11</sup>Thoraxcenter Twente, Medisch Spectrum Twente, Enschede, The Netherlands; and <sup>12</sup>Department of Medical Physiology, University of Utrecht, Hanzeplein 1, 9700RB Groningen, Utrecht, The Netherlands

Received 18 September 2016; editorial decision 30 December 2016; accepted 31 December 2016; online publish-ahead-of-print 27 February 2017

## Aims

Cardiac resynchronization therapy (CRT) reduces morbidity and mortality in systolic heart failure patients with ventricular conduction delay. Variability of individual response to CRT warrants improved patient selection. The Markers and Response to CRT (MARC) study was designed to investigate markers related to response to CRT.

## Methods and results

We prospectively studied the ability of 11 clinical, 11 electrocardiographic, 4 echocardiographic, and 16 blood biomarkers to predict CRT response in 240 patients. Response was measured by the reduction of indexed left ventricular end-systolic volume (LVESV<sub>i</sub>) at 6 months follow-up. Biomarkers were related to LVESV<sub>i</sub> change using log-linear regression on continuous scale. Covariates that were significant univariately were included in a multivariable model. The final model was utilized to compose a response score. Age was 67 ± 10 years, 63% were male, 46% had ischaemic aetiology, LV ejection fraction was 26 ± 8%, LVESV<sub>i</sub> was 75 ± 31 mL/m<sup>2</sup>, and QRS was 178 ± 23 ms. At 6 months LVESV<sub>i</sub> was reduced to 58 ± 31 mL/m<sup>2</sup> (relative reduction of 22 ± 24%), 130 patients (61%) showed ≥ 15% LVESV<sub>i</sub> reduction. In univariate analysis 17 parameters were significantly associated with LVESV<sub>i</sub> change. In the final model age, QRS<sub>AREA</sub> (using vectorcardiography) and two echocardiographic markers (interventricular mechanical delay and apical rocking) remained significantly associated with the amount of reverse ventricular remodelling. This CAVIAR (CRT-Age-Vectorcardiographic QRS<sub>AREA</sub>-Interventricular Mechanical delay-Apical Rocking) response score also predicted clinical outcome assessed by heart failure hospitalizations and all-cause mortality.

## Conclusions

The CAVIAR response score predicts the amount of reverse remodelling after CRT and may be used to improve patient selection. Clinical Trials: NCT01519908

\* Corresponding author. Tel: +31 50 3612355; fax: +31 50 3614391. E-mail address: a.h.maass@umcg.nl

† These authors contributed equally to the study.

## Keywords

Heart failure • Biomarkers • Cardiac resynchronization therapy • Vectorcardiography  
• Electrocardiography • Echocardiography

### What's new?

- A simple response score can predict the amount of reverse ventricular remodelling after cardiac resynchronization therapy (CRT).
- Vectorcardiography performs better than conventional electrocardiography to predict reverse ventricular remodelling after CRT.
- Simple echocardiographic dyssynchrony markers improve CRT response prediction.
- In a multivariate analysis, blood biomarkers did not add to the predictive value of clinical, electrical, and echocardiographic markers.

## Introduction

Cardiac resynchronization therapy (CRT) is an established therapy for patients with systolic heart failure despite optimal medication and inter- and intraventricular conduction delay. CRT reduces heart failure hospitalizations and mortality and improves exercise capacity and quality of life.<sup>1–6</sup> Despite the success of CRT, a significant number of patients show no clinical improvement.<sup>4</sup> Several factors influence response to CRT including aetiology of heart failure, QRS morphology and duration, and mechanical dyssynchrony.<sup>5,7</sup> In addition, optimal delivery of CRT and targeted lead position are essential for response to CRT.<sup>8</sup> One of the best parameters to define reverse remodelling is reduction of indexed left ventricular end systolic volume (LVESV<sub>i</sub>). Reverse ventricular remodelling is closely correlated with clinical endpoints such as all-cause mortality and heart failure hospitalizations.<sup>9</sup>

In the landmark trials the selection of patients was mainly based on QRS duration.<sup>2,3,6</sup> Retrospective analyses have shown that patients with left bundle branch block (LBBB) ECG morphology may have a higher chance to respond to CRT.<sup>10</sup> As a consequence, both QRS duration and morphology are mentioned in the most recent guidelines, refining identification of the electrical substrate.<sup>1,11</sup> However, there are several definitions of LBBB, making this marker operator-dependent.<sup>12</sup> Echocardiographic markers of dyssynchrony may also have predictive value but many are notoriously difficult to reproduce with high intra- and interobserver variability.<sup>13</sup> Only limited data is available on the predictive value of blood biomarkers for CRT response and outcome.<sup>14</sup>

To improve prediction of the beneficial effects of CRT we prospectively investigated the prognostic value of a set of clinical, electrical, structural, and blood biomarkers to predict reverse remodelling assessed as a decrease in LVESV<sub>i</sub> in patients with an indication for CRT according to the guidelines.

## Methods

More extensive description of the methods can be found in the Supplementary materials online.

## Study design

The Markers and Response to CRT (MARC) study was a prospective, multicentre, observational study performed in The Netherlands designed to identify a set of biomarkers that can predict the magnitude of reverse LV remodelling. In total, 240 patients with an indication for CRT according to the current guidelines<sup>1,11</sup> including patients with LBBB and non-specific intraventricular conduction delay (IVCD) but without right bundle branch block were included in 6 participating centres between February 2012 and November 2013. Total follow-up was 12 months. The study was initiated and coordinated by the six centres within the framework of the Centre for Translational Molecular Medicine (CTMM), project COHFAR (grant 01C-203), and additionally financially supported by Medtronic Inc., Minneapolis, MN, USA. Study monitoring was done by Medtronic Bakken Research Centre, Maastricht, the Netherlands, data management, validation, and statistical analysis by the investigators in collaboration with Medtronic (BG). The study was approved by the institutional review boards of all participating centres. All patients gave written informed consent. The trial was registered at [clinicaltrials.gov](http://clinicaltrials.gov): NCT01519908.

## Study participants

Inclusion criteria were an indication for CRT according to the guidelines at the time of inclusion. All patients had a *de novo* indication for CRT according to the most recent ESC and American guidelines.<sup>1,11</sup> New York Heart Association (NYHA) class II or III, stable sinus rhythm (no documented atrial arrhythmias lasting >30 s during the last 2 weeks prior to inclusion), for class II patients an intrinsic QRS-width  $\geq 130$  ms with LBBB or  $\geq 150$  ms with non-specific IVCD, for NYHA class III an intrinsic QRS-width  $\geq 120$  ms with LBBB or  $\geq 150$  ms with non-specific IVCD, and on optimal heart failure oral medical therapy. Exclusion criteria included severe renal insufficiency with a glomerular filtration rate  $< 30$  mL/min/1.73m<sup>2</sup>, an upgrade from a bradycardia pacemaker or CRT-P to CRT-D, permanent atrial fibrillation (AF) or flutter or tachycardia, right bundle branch block, and permanent second or third degree atrioventricular (AV) block. Patients were seen at the outpatient department at baseline, 1, 6, and 12 months after CRT-D implantation.

## Device settings and optimization

After implantation devices were programmed to DDD mode with a sensed AV delay of 90 ms and a paced AV delay of 130 ms. Left-to-right (VV) ventricular delay was set to 0 ms. After 1 month, AV and VV delays were optimized echocardiographically to the discretion of the local investigator. Devices were programmed to rate response mode after 1 month unless good chronotropic response was observed at device check-up utilizing device rate histograms.

## Biomarkers

Biomarkers assessed in the MARC study included 11 clinical parameters, 11 electrocardiographic parameters including beat-to-beat variability and vectorcardiography (VCG), 4 echocardiographic parameters assessing cardiac function and structure, and 16 blood biomarkers. These parameters were chosen on the basis of earlier implication as response predictors from prospective or retrospective analyses.

## Electrocardiography and VCG

A 12-lead digital electrocardiogram (ECG) was recorded at baseline. All parameters were analysed in the ECG core lab (S.W., M.V.). LBBB was defined as a slurred/notched R-wave in I, aVL and V6, an absent Q in I, V5, V6, a R-peak time >60 ms in V6 and no R- or R-wave of <60 ms in V1-V3. VCGs were synthesized from pre-procedural digital 12 lead ECGs. A VCG consists of three orthogonal leads X, Y, and Z, which together form a 3D vector loop. The  $QRS_{AREA}$  and  $T_{AREA}$  were calculated from the VCG. RR and QT Short-Term Variability (STV RR and STV QT) were assessed from beat-to-beat variability during >2 min ECG recording. An illustration demonstrating QRS conversion to VCG and  $QRS_{AREA}$  can be found in the Supplementary material online.

## Echocardiography

Echocardiograms were obtained before and 6 months after implantation and analysed by the echocardiography core lab (J.S., M.J.C.) using vendor specific software. Images were deemed not analysable if image quality was unsuitable for reliable assessment. All echocardiographic parameters were measured on three separate beats and averaged. LV end-diastolic diameter, end-diastolic and end-systolic volume (LVESV), and ejection fraction were measured using the biplane Simpson's method by two experienced observers. If image quality of the apical two chamber view was deemed unsuitable for reliable biplane volume assessment, solely the apical four chamber volume was used. Volumetric response ( $\Delta LVESV_i$ ) was calculated as the change of log-transformed LVESV<sub>i</sub> between baseline and 6-month follow-up. Apical rocking was defined as a short systolic septal to lateral rocking motion of the apex. It results from short initial septal contraction and inward motion of the septum, pulling the apex towards the septum,<sup>15</sup> followed by delayed activation of the lateral wall, pulling the apex laterally while stretching the septum. Septal flash was defined as a rapid contraction and subsequent stretching of the septum during the isovolumetric contraction period. Interventricular mechanical delay (IVMD) was defined as the timing difference between left and right ventricular pre-ejection intervals. All dyssynchrony parameters were assessed by an observer blinded for volumetric response. Mitral valve insufficiency was visually assessed and scored.

## Blood biomarkers

Parameters were chosen to cover pathophysiological domains that could be involved in CRT response: neurohormones, renal function parameters, inflammation, structural myocardial markers, and collagen turnover. Within each pathophysiological domain, parameters were chosen depending on earlier implication in CRT response by previous prospective or retrospective analyses. Blood was collected at implant from peripheral blood and the coronary sinus. The collagen markers (Procollagen Type III N-terminal Peptide (P3NP), C-terminal Telopeptide of Type I Collagen (ICTP), C-terminal Propeptide of Type I Procollagen (PICP), Matrix Metallo Proteinase 9 (MMP-9), Tissue Inhibitor of Metalloproteinase 1 (TIMP-1), and Aldosterone) were sent to an independent laboratory (Centre d'Investigation Clinique – Plurithématique Pierre Drouin CHU de Nancy, Nancy, France) for analysis. ST2, Growth Differentiation Factor 15 (GDF-15), Galectin-3, N-terminal Prohormone Brain Natriuretic Peptide (NT-proBNP), high-sensitive troponin T (TnT), creatinine, blood urea nitrogen (BUN), high-sensitive C-reactive protein (hsCRP) and Interleukin-6 (IL-6) were measured in the University Medical Centre Groningen (M.K., A.H.M.). The laboratories were blinded to the clinical history.

## Statistical analysis

The MARC study was designed to assess the relation between biomarker variables measured at baseline and reverse remodelling at 6 months after CRT initiation. The pre-specified analysis was to perform an analysis of

covariance (ANCOVA) on logarithm-transformed LVESV<sub>i</sub> measurements for each of the biomarker variables. The PROSPECT study<sup>13</sup> showed that LVESV<sub>i</sub> has a log-normal distribution, and with transformation the model results can be interpreted on a relative scale. We planned to enroll 240 patients in order to have at least 200 patients with paired baseline and 6-month LVESV<sub>i</sub> measurements, which would give 90% power to show significance on a predictor with predictive ability similar to IVMD in PROSPECT.<sup>13</sup> Each marker was tested separately in an ANCOVA model with the marker and baseline LVESV<sub>i</sub> as covariates. Continuous markers were standardized. Significant markers were included in a multivariable model and backward elimination was used to determine a final multivariable model. Patients with incomplete covariate data were excluded from the analysis. The predictive value of the response score in pre-specified subgroups was depicted in a forest plot. CIs for the increase in relative LVESV<sub>i</sub> change with a one-point increase on the response score were derived from ANCOVA models restricted to the subgroup. Interaction *P*-values were derived from models with the subgroup indicator and response score as covariates. The relation between response score and incidence of the composite endpoint of all-cause death and hospitalization for worsening heart failure was assessed using Cox proportional hazards regression. The Kaplan-Meier method was used to estimate incidence in patient groups defined by tertiles of the response score. All analyses were performed using SAS software version 9.4 (SAS Institute, Cary, NC, USA), and a *P*-value < 0.05 was considered statistically significant in all analyses. Results are presented as mean  $\pm$  SD unless indicated otherwise.

## Results

### Patient characteristics

A total of 240 patients were included. For 213 patients paired LVESV<sub>i</sub> measurements were available. These 213 patients were analysed for the primary endpoints. Reasons for absence of paired LVESV<sub>i</sub> measurements were 2 failed implants, 5 implants not attempted, 4 deaths, 4 withdrawn consent, 1 missed visit, 11 unperformed or unreadable echocardiogram studies. Baseline characteristics are shown in *Table 1*. Mean age was  $67 \pm 10$  years, 63% were male. Heart failure was of ischaemic origin in 46% of patients and one third was in NYHA class III. Main comorbidities were diabetes mellitus (27%) and chronic obstructive pulmonary disease (13%). The majority of patients had LBBB (57%), QRS duration was  $179 \pm 23$  ms. AV conduction was preserved in most patients with a PR interval of  $195 \pm 41$  ms. Echocardiographically measured IVMD was  $46 \pm 29$  ms, and apical rocking was present in 60% of patients.

### Lead positions

Transvenous LV lead implantation was successful in 233 (97%). Eight patients received an epicardial LV lead by surgical approach. LV lead position was lateral in 67% and postero-lateral in 23% of 211 patients with implant fluoroscopic images. The RV lead was placed in the apex in 85%.

### AF during follow-up

During follow-up atrial high rate episodes lasting >6 min were detected in 56 patients (23%). Only 9 of them had AF  $\geq 23$  h and only 2 patients longer than 1 month.

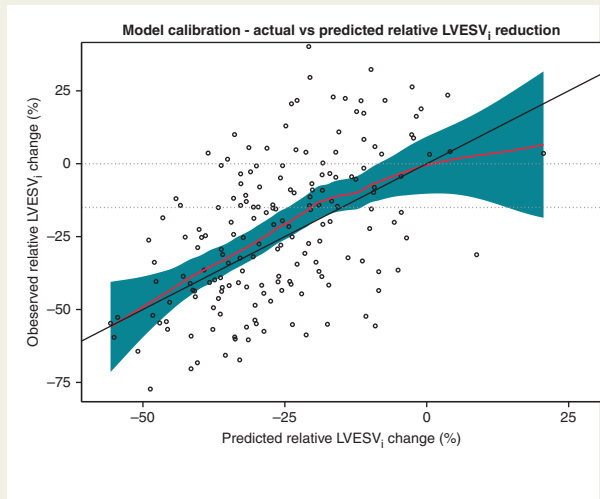
**Table 1** Baseline characteristics

Baseline characteristic	All patients (n = 240)	Patients with paired LVESV <sub>i</sub> (n = 213)
Demographics		
Age—years	67 ± 10	66 ± 10
Male sex—no. (%)	151 (63)	132 (62)
Medical history—no. (%)		
Ischaemic etiology of heart failure	111 (46)	90 (42)
History of AF	32 (13)	27 (13)
Left bundle branch block (per investigator)	209 (87)	187 (88)
Left bundle branch block (ECG core laboratory <sup>a</sup> )	137 (57)	129 (61)
Diabetes	65 (27)	56 (26)
Renal dysfunction	15 (6)	10 (5)
Chronic obstructive pulmonary disease	31 (13)	26 (12)
Baseline status		
LV ejection fraction <sup>b</sup> —%	26 ± 8	26 ± 7
LVESV volume index <sup>b</sup> —mL/m <sup>2</sup>	74 ± 30	75 ± 31
QRS duration <sup>a</sup> —ms	178 ± 23	179 ± 23
PQ interval <sup>a</sup> —ms	195 ± 41	192 ± 37
NYHA class—no. (%)		
I	1 (0.4)	1 (0.5)
II	150 (63)	133 (62)
III	89 (37)	79 (37)
IV	0 (0)	0 (0)
VCG and echocardiography		
QRS <sub>AREA</sub> <sup>a</sup> —μVs	131 ± 47	136 ± 47
Inter-ventricular mechanical delay <sup>b</sup> —ms	46 ± 29	47 ± 29
Apical rocking <sup>b</sup> —no. (%)	143 (60)	135 (63)
Blood biomarkers—median (IQR)		
P3NP—μg/L	3.3 (2–5)	3.3 (2–5)
BUN—mmol/L	7.5 (6–10)	7.3 (6–9)
Creatinine—μmol/L	87 (72–111)	85 (70–109)
NT-proBNP—ng/L	966 (437–1839)	974 (440–1815)
TIMP1—ng/mL	177 (146–238)	175 (145–234)
Galectin 3—ng/mL	17 (14–22)	17 (14–21)
C-PICP—ng/mL	82 (63–108)	81 (63–108)
MMP9—ng/mL	228 (153–350)	235 (148–361)
C-ICTP—μg/L	5.3 (4–9)	5.2 (4–9)
Aldosterone—pg/mL	65 (33–127)	63 (30–132)
hsCRP—mg/L	2.1 (1–5)	2.0 (1–5)
High-sensitivity Troponin T—ng/L	22 (15–31)	22 (14–30)
IL-6—ng/mL	2.7 (2–5)	2.7 (2–5)
ST2—ng/L	25 (19–33)	25 (19–33)
GDF15—ng/L	290 (198–469)	283 (196–454)
PICP/ICTP ratio	15 (9–26)	15 (9–27)
Baseline medication—no. (%)		
ACE inhibitor or ARB	225 (94)	200 (94)
Aldosterone antagonist	116 (48)	105 (49)
Beta-blocker	201 (84)	181 (85)
Diuretic	170 (71)	152 (71)
Statin	142 (59)	120 (56)

<sup>a</sup>ECG core laboratory.<sup>b</sup>Echo core laboratory.

± values are mean ± SD. ACE, angiotensin-converting-enzyme; ARB, angiotensin receptor blocker; IQR, interquartile range; NYHA, New York Heart Association.





**Figure 1** Scatter plot of actual vs. predicted relative reduction of LVESV<sub>i</sub>. The diagonal black line is the line of equality. The red curve and blue band are a LOESS fit with 95% confidence band.

## Echocardiographic outcome at 6 months

For 213 patients paired LVESV<sub>i</sub> measurements were available. At 6 months LVESV<sub>i</sub> was reduced from  $75 \pm 31 \text{ mL/m}^2$  at baseline to  $58 \pm 31 \text{ mL/m}^2$  (relative reduction  $22 \pm 25\%$ ). In total, 130 patients (61%) had a reduction  $\geq 15\%$  of LVESV<sub>i</sub>. Unadjusted associations of each individual marker with LVESV<sub>i</sub> reduction are reported in Supplementary material online, Table S1. A multivariable model was built using

backward selection of all markers except JTc with a significant unadjusted association (Table 2). The final model included the following independent markers: age, QRS<sub>AREA</sub>, interventricular mechanical delay, and apical rocking. Advancing age was inversely related with LVESV<sub>i</sub> reduction. The other three markers, one electro- and two echocardiographic markers, were positively related with LVESV<sub>i</sub> reduction; larger QRS<sub>AREA</sub> and longer interventricular mechanical delay, and presence of apical rocking were associated with larger LV reverse remodelling.

## LVESV<sub>i</sub> response score

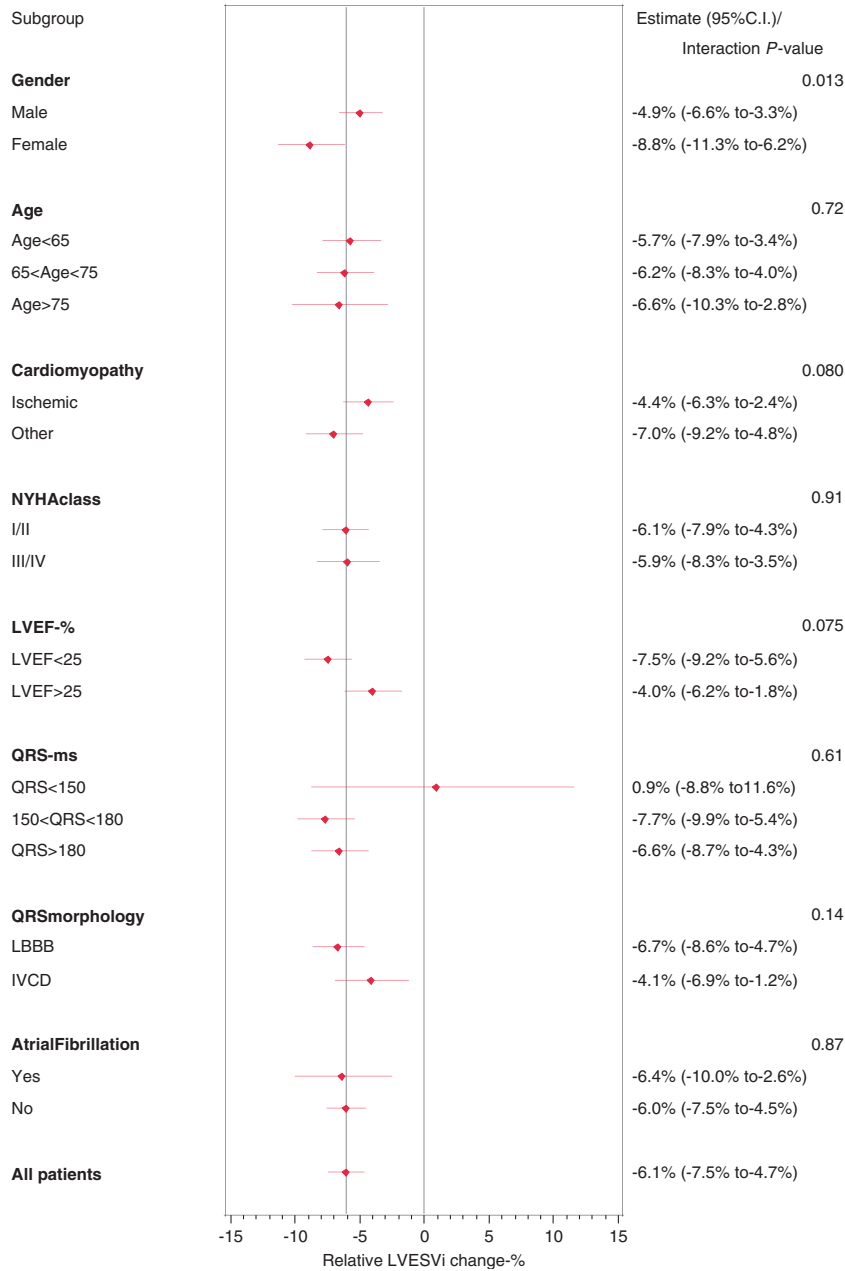
The final model calibration is illustrated by Figure 1. Based on the significant markers in the multivariable model we constructed the CAVIAR (CRT-Age-Vectorcardiographic QRS area-Interventricular mechanical delay-Apical Rocking) scoring system for LVESV<sub>i</sub> reduction with CRT (Table 3). The CAVIAR predicted and average actual change of LVESV<sub>i</sub> are shown in Table 4. Figure 2 illustrates how the response score predicts reverse remodelling in selected subgroups. Shown is the percent-wise relative change of LVESV<sub>i</sub> that corresponds to a one point increase on the response score. Only female gender was associated with more reverse remodelling at comparable CAVIAR scores.

Figure 3 illustrates that QRS<sub>AREA</sub> predicted LVESV<sub>i</sub> change better than QRS duration. Comparing a model for LVESV<sub>i</sub> reduction including QRS duration and QRS morphology to a model including QRS duration, QRS morphology and QRS area, the likelihood ratio (LR) test for comparison has a chi-square value of 25.1 ( $P < 0.0001$ ), indicating that the QRS area adds significantly to just QRS duration and morphology. Similarly for the incidence of all-cause mortality and hospitalization for worsening heart failure, the LR chi-square is 10.6 ( $P$ -value of 0.0011).

**Table 2** Univariable and multivariable prediction of LVESV<sub>i</sub> reduction

Covariate biomarker	Patients with paired LVESV <sub>i</sub> (n = 213)—no(%)	Unadjusted models			Multivariable model		
		Effect estimate <sup>a</sup>	95% CI	P-value	Effect estimate <sup>a</sup>	95% CI	P-value
Female gender	81 (38)	-12.2%	(-20.1%, -3.7%)	0.006			
Age	66 ± 10	5.7%	(1.1%, 10.7%)	0.016	4.6%	(0.1%, 9.3%)	0.043
Ischaemic cardiomyopathy	90 (42)	25.8%	(15.3%, 37.3%)	<0.0001			
NYHA class (I/II)	134 (63)	-12.2%	(-20.0%, -3.5%)	0.007			
LBBB	129 (61)	-20.2%	(-27.1%, -12.7%)	<0.0001			
BUN—ng/mL	8 ± 4	5.6%	(0.9%, 10.5%)	0.019			
Creatinine—ng/mL	93 ± 33	6.2%	(1.5%, 11.2%)	0.009			
Galectin 3—ng/mL	18 ± 6	5.6%	(0.8%, 10.5%)	0.021			
ST2	28 ± 13	7.4%	(2.5%, 12.5%)	0.003			
PQ interval—ms	192 ± 37	6.1%	(1.3%, 11.1%)	0.012			
JTc interval—ms	368 ± 42	5.6%	(0.8%, 10.5%)	0.020			
STV QT—ms	0.79 ± 0.35	5.2%	(0.3%, 10.3%)	0.038			
QRS <sub>AREA</sub> —μVs	136 ± 47	-13.9%	(-17.7%, -9.8%)	<0.0001	-10.4%	(-14.9%, -5.8%)	<0.0001
T wave area—μVs	93 ± 36	-11.2%	(-15.5%, -6.6%)	<0.0001			
Inter-ventricular mechanical delay—ms	47 ± 29	-12.1%	(-15.9%, -8.1%)	<0.0001	-5.5%	(-10.2%, -0.7%)	0.026
Apical rocking	135 (63%)	-19.6%	(-26.5%, -12.0%)	<0.0001	-11.8%	(-19.8%, -2.9%)	0.010
Septal flash	102 (48%)	-18.0%	(-25.3%, -10.0%)	<0.0001			

<sup>a</sup>Effect Estimate for continuous variables is for 1 SD change. For example, for age the SD is 10 years and the effect estimate is 4.6%, which means that a patient who is 10 years older had on average 4.6% increase of LVESV<sub>i</sub> (i.e. less reverse remodelling).



**Figure 2** Forest plot for predicted difference in relative LVESVi change corresponding to a one point increase of the response score, according to pre-specified subgroups. The right side shows predicted difference and CI, and interaction P-values.

### Relation of reverse remodelling at 6-months and cardiovascular events

During 1-year follow-up, 11 deaths and 29 hospitalizations for worsening heart failure occurred in 23 patients. Ten patients had an event after the 6-month visit. Cox regression analysis identified a significant relation between reverse LV remodelling at 6 months and the post-6 months incidence of combined endpoint

of all-cause death or hospitalization for worsening heart failure ( $P = 0.0083$ ). A higher CAVIAR score was significantly associated with lower incidence of the combined endpoint (hazard ratio 0.72; 95% CI 0.59–0.87;  $P = 0.0006$ ). In Figure 4, the Kaplan-Meier estimates are depicted for the incidence of the combined endpoint, according to CAVIAR score tertiles (score -2 to 1, 2–4, and 5–9).

**Table 3** Response score for factors associated with LVESV<sub>i</sub> reduction

Variable	Value range	Score
Age—year	<60	1
	60–74	0
	≥75	-1
Vectorcardiographic QRS <sub>AREA</sub> —μVs	<80	-2
	80–99	-1
	100–119	0
	120–139	1
	140–159	2
	160–179	2
	180–199	3
	200–219	4
Inter-ventricular mechanical delay—ms	≥220	5
	<15	-1
	15–44	0
	45–74	1
Apical Rocking	≥75	2
	Absent	0
	Present	2

The CAVIAR (CRT-Age-Vectorcardiographic QRS area-Interventricular mechanical delay-Apical Rocking) score is the sum of the applicable values in column 'Score' with minimum -2 and maximum 9.

**Table 4** Predicted and average actual change of LVESV<sub>i</sub> assigned to the response score

Response score	Patients —n (%)	Predicted LVESV <sub>i</sub> change—%	Average actual LVESV <sub>i</sub> change—%
-2	12 (7)	-1.3	-5.3
-1	14 (8)	-7.1	-14.9
0	15 (8)	-12.5	8.2
1	19 (11)	-17.6	-12.9
2	18 (10)	-22.4	-19.6
3	23 (13)	-26.9	-22.5
4	20 (11)	-31.2	-32.3
5	19 (11)	-35.2	-29.6
6	15 (8)	-38.9	-36.1
7	9 (5)	-42.5	-46.9
8	6 (3)	-45.8	-45.6
9	7 (4)	-49.0	-47.4

## Discussion

This prospective study was primarily designed to determine markers for response in patients with a guideline indication for CRT. Independent predictors of response were younger age, larger QRS<sub>AREA</sub>, longer interventricular mechanical delay and presence of apical rocking, all represented in the CAVIAR score. QRS morphology and duration, and several blood biomarkers were predictors in

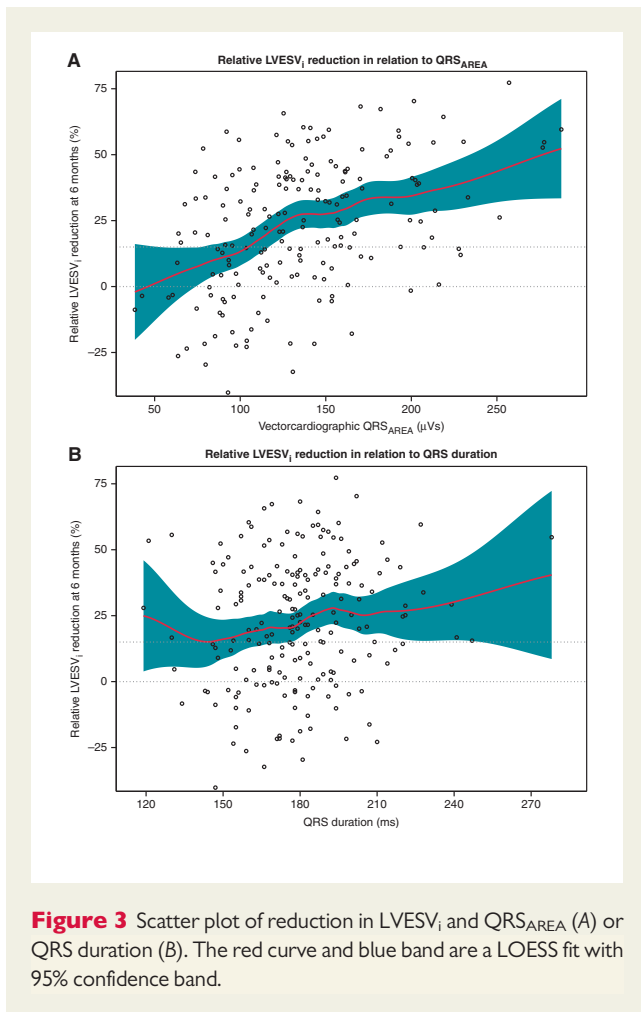
univariate analysis but did not add to the response prediction score after multivariate analysis. Interestingly, of all biomarkers tested, relatively simple biomarkers remain to compose the CAVIAR score, which facilitates the clinical use of this score.

In contrast to earlier studies, we analysed reverse ventricular remodelling on a continuous scale to derive a reliable and easy-to-use response score. Over the entire patient cohort, 61% response was observed when assessing the usual cut off for response, reduction of ≥ 15% of LVESV<sub>i</sub>. This percentage is consistent with earlier data.<sup>4</sup> Using the continuous scale, we found younger age, larger QRS<sub>AREA</sub> derived from VCG and two echocardiographic dyssynchrony parameters (longer IVMD and presence of apical rocking) independently predicting response to CRT. Young age <60 years was associated with a beneficial outcome whereas age >75 years showed the opposite. The relevance of age for response is not well established but has been identified before.<sup>16,17</sup>

A larger QRS<sub>AREA</sub> was also independently associated with a larger benefit of CRT. This is in accordance with data of a smaller study in 81 CRT candidates where QRS<sub>AREA</sub> was found to be a stronger predictor of CRT response (≥15% LVESV reduction) than QRS morphology or QRS duration.<sup>18</sup> The strong association of 3D vectorcardiographic derived QRS<sub>AREA</sub> and CRT response may be explained by the fact that it shows the extent of unopposed electrical forces generated within the heart during ventricular depolarization, representing the direction as well as the delay of electrical activation. Figure 5 shows that QRS<sub>AREA</sub> incorporates both QRS duration and core lab judged QRS morphology but the variability shows that there are unexplained other factors influencing this parameter. One of these parameters may be scar as QRS<sub>AREA</sub> appears to be larger in non-ischaeamic heart failure patients.<sup>18</sup> QRS<sub>AREA</sub> could therefore be a more comprehensive marker of the electrical substrate amenable to CRT than conventional ECG markers. This was supported by observations in an invasive electro-anatomic mapping study during CRT implantation in which patients with a large QRS<sub>AREA</sub> had a significantly more delayed activation of the LV posterolateral wall.<sup>19</sup> The advantage of QRS<sub>AREA</sub> compared with conventional ECG markers is that this parameter is observer-independent and represented in a quantitative manner, while as opposed to QRS-morphology indices (LBBB, IVCD) it is objectively determined and is a continuous variable. QRS<sub>AREA</sub> predicts reduction of LVESV<sub>i</sub> independent of QRS morphology (Supplementary material online, Figure S3). Of importance for clinical use of the CAVIAR response score, the 3D vectorcardiogram can be constructed by commercially available ECG machines, and QRS<sub>AREA</sub> calculation can be automated using the inverse Dower or Kors' regression transformation.<sup>20</sup>

The strong association of two echocardiographic dyssynchrony parameters, IVMD as measure of *interventricular* dyssynchrony and apical rocking as marker of *intra*ventricular dyssynchrony, is not surprising. IVMD was one of the first parameters being associated with response to CRT but prospective studies were disappointing.<sup>5,13</sup> However, of all echocardiographic dyssynchrony markers, IVMD showed the lowest inter- and intraobserver variability.<sup>13</sup> Apical rocking is a less-investigated marker predicting CRT response.<sup>15</sup> Apical rocking was a stronger predictor than septal flash as the latter parameter is more easily underreported. Our study now identifies both an *interventricular* and an *intra*ventricular dyssynchrony parameter independently predicting reverse remodelling.

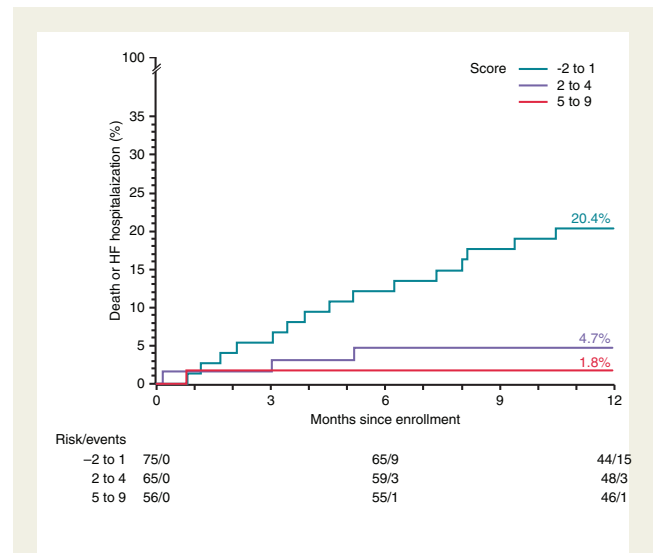




Non-*ischaemic* cardiomyopathy, QRS duration and morphology and blood biomarkers did not significantly improve the predictive value of the CAVIAR response score. This may relate to the fact that these parameters are adequately reflected by age, VCG, and echocardiography. Additionally, only few patients in our study had QRS duration <150 ms and the relation between QRS duration and CRT response flattens for higher QRS duration values.<sup>10</sup> The magnitude of remodelling predicted by the CAVIAR score in females exceeds that in males, as is demonstrated in *Figure 2*. The higher success rate in females has been described before.<sup>2</sup> The mechanism of better response in women is still unknown and will be investigated in the BioWomen study (NCT02344420).

LBBB was a significant predictor of CRT benefit in the univariate analysis, but it disappeared in the multivariate analysis due to the stronger predictive power of QRS<sub>AREA</sub> which is correlated with LBBB, as illustrated in *Figure 5*.<sup>18</sup> Another problem with LBBB is that it is subjectively assessed and that there are multiple definitions used, even between clinical trials.<sup>5</sup> This is also highlighted in our study cohort with 87% investigator-reported vs. 57% core-lab reported study patients had LBBB (*Table 1*).

An advantage of our continuous response scale is that reverse remodelling in the individual patient can be compared with the predicted value which could trigger additional efforts to improve



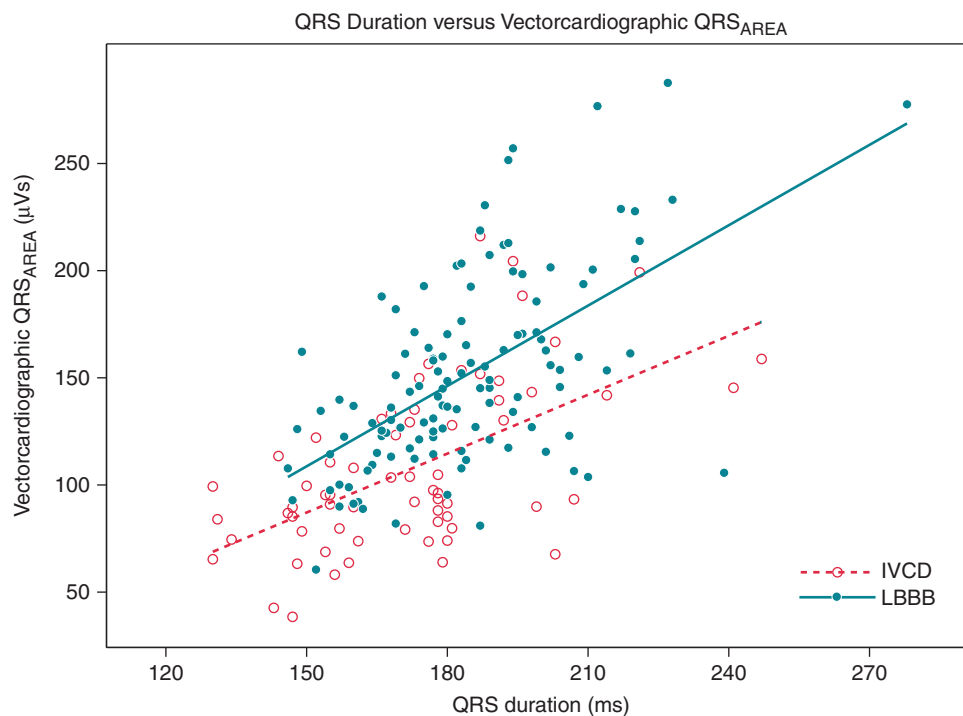
**Figure 4** Kaplan-Meier estimates for the incidence of the combined endpoint of all-cause death and hospitalization for worsening heart failure, for patients grouped by response score tertile. A lower score is associated with a significantly increased event incidence ( $P = 0.0006$  with score as a continuous variable).

response.<sup>8</sup> This also holds for patients in whom super-response, defined as a decrease of LVESV<sub>i</sub> > 30%, is predicted by a CAVIAR score of 4 or more.

Clinical events such as all-cause mortality and heart failure hospitalizations have been correlated with reverse ventricular remodelling in earlier cohorts.<sup>9</sup> The CAVIAR score predicts the occurrence of these events with <2% adverse clinical events in the first year in super-responders with a CAVIAR score >4 and more than 20% events if CAVIAR is <2 (*Figure 4*).

## Strength and limitations

The strength of our study is the homogenous group of patients included in only six centres and analyses of our data in core labs with specific expertise in respective areas. Another strength is the large number of biomarkers assessed to find the response score. This allows weighing the predictive value and statistically assessing the relationship between some of the biomarkers. Patients were included according to the most recent ESC guidelines<sup>11</sup> and were comparable to those included in other CRT trials. We excluded patients with a right bundle branch block because previous data showed a low response rate in these patients. Furthermore, we excluded patients with permanent AF and AF at baseline to avoid inadequate biventricular pacing. Follow-up was excellent with paired echocardiographic studies available in 213 of 240 (89%) patients. Since AF often leads to inadequate biventricular stimulation, especially in patients without AV block, we designed strict inclusion criteria permitting inclusion only patients without recent AF. This precluded interference of AF during biventricular pacing in almost all patients. AHRE of more than 1 month were recorded in only two patients.



**Figure 5** Relation between  $QRS_{AREA}$  derived from VCG and QRS duration on standard 12 lead ECG. Full blue dots are patients with core lab judged LBBB and empty red dots patients with non-specific intraventricular conduction delay (IVCD).

Limitations are the relatively small number of patients as compared with the landmark trials. Our response score has not yet been replicated in a different cohort. Furthermore, we did not systematically study the effects of scar burden on CRT response as cardiac magnetic resonance imaging was performed in only a subset of patients. Optimization of AV and interventricular delays was not uniform in all centres and we cannot exclude that this had an effect on the presented results. We included a majority of patients in functional class NYHA II. Therefore, our data may not apply for patients with severe heart failure.

### Clinical implications

Of importance for clinical use of the CAVIAR response score, the three parameters needed to calculate CAVIAR require relatively standard echocardiography and ECG. Apical rocking can be assessed from regular B-mode echo and IVMD from Doppler ultrasound measurements of pulmonary and aortic valve opening times, the 3D vectorcardiogram can be constructed by commercially available ECG machines, and  $QRS_{AREA}$  calculation can be automated using the inverse Dower or Kors' regression transformation. Therefore, all tools required to determine a patients' CAVIAR score are clinically available.

### Conclusion

In this prospective study, specifically designed to study markers of response to CRT from multiple domains, we identified lower age, larger

QRS area, longer interventricular mechanical delay, and presence of apical rocking as independent predictors of response, all represented in the CAVIAR response score. This score can be used both to identify candidates for CRT and predict the amount of ventricular reverse remodelling, as well as to validate the achieved reverse remodelling after CRT to recognize patients with suboptimally delivered CRT, who may benefit from additional optimization.

### Supplementary material

Supplementary material is available at *Europace* online.

**Conflict of interest:** A.H.M reports lecture fees from Medtronic and LivaNova. K.V. reports consultancy for Medtronic; research grants from Medtronic; speaker fees from St. Jude Medical. F.P. reports Research grants from Medtronic, St Jude Medical, Biotronik, Sorin, Biosense Webster, EBR Systems and is a member on the Medtronic Advisory Board. B.G. reports salary and shares of Medtronic. C.S. reports salary from Medtronic. M.H. reports salary and shares of Medtronic. M.A.V. reports funding from CTMM COHFAR, CVON Predict, EU TrigTreat, EU CERT\_ICD and GiLead to perform (pre)clinical studies.

### Funding

This research was performed within the framework of CTMM, the Centre for Translational Molecular Medicine ([www.ctmm.nl](http://www.ctmm.nl)), project COHFAR (grant 01C-203), and supported by the Dutch Heart Foundation.

## References

1. Epstein AE, DiMarco JP, Ellenbogen KA, Estes NA, 3rd, Freedman RA, Gettes LS et al. 2012 ACCF/AHA/HRS focused update incorporated into the ACCF/AHA/HRS 2008 guidelines for device-based therapy of cardiac rhythm abnormalities: a report of the American College of Cardiology Foundation/American Heart Association Task Force on Practice Guidelines and the Heart Rhythm Society. *Circulation* 2013;**127**:e283–352.
2. Tang AS, Wells GA, Talajic M, Arnold MO, Sheldon R, Connolly S et al. Cardiac-resynchronization therapy for mild-to-moderate heart failure. *N Engl J Med* 2010;**363**:2385–95.
3. Moss AJ, Hall WJ, Cannom DS, Klein H, Brown MW, Daubert JP et al. Cardiac-resynchronization therapy for the prevention of heart-failure events. *N Engl J Med* 2009;**361**:1329–38.
4. European Heart Rhythm A, European Society of C, Heart Rhythm S, Heart Failure Society of A, American Society of E, American Heart A et al. 2012 EHRA/HRS expert consensus statement on cardiac resynchronization therapy in heart failure: implant and follow-up recommendations and management. *Europace* 2012;**14**:1236–86.
5. Daubert JC, Saxon L, Adamson PB, Auricchio A, Berger RD, Beshai JF et al. Strategies to improve cardiac resynchronization therapy. *Nat Rev Cardiol* 2014;**11**:481–93.
6. Linde C, Abraham WT, Gold MR, Daubert C, Group RS. Cardiac resynchronization therapy in asymptomatic or mildly symptomatic heart failure patients in relation to etiology: results from the REVERSE (REsynchronization reVERses Remodeling in Systolic Left Ventricular Dysfunction) study. *J Am Coll Cardiol* 2010;**56**:1826–31.
7. Poole JE, Singh JP, Birgersdotter-Green U. QRS duration or QRS morphology: what really matters in cardiac resynchronization therapy? *J Am Coll Cardiol* 2016;**67**:1104–17.
8. Mullens W, Grimm RA, Verga T, Dresing T, Starling RC, Wilkoff BL et al. Insights from a cardiac resynchronization optimization clinic as part of a heart failure disease management program. *J Am Coll Cardiol* 2009;**53**:765–73.
9. Foley PW, Chalil S, Khadjooi K, Irwin N, Smith RE, Leyva F. Left ventricular reverse remodelling, long-term clinical outcome, and mode of death after cardiac resynchronization therapy. *Eur J Heart Fail* 2011;**13**:43–51.
10. Cleland JG, Abraham WT, Linde C, Gold MR, Young JB, Claude Daubert J et al. An individual patient meta-analysis of five randomized trials assessing the effects of cardiac resynchronization therapy on morbidity and mortality in patients with symptomatic heart failure. *Eur Heart J* 2013;**34**:3547–56.
11. Brignole M, Auricchio A, Baron-Esquivias G, Bordachar P, Boriani G, Breithardt OA et al. 2013 ESC guidelines on cardiac pacing and cardiac resynchronization therapy: the task force on cardiac pacing and resynchronization therapy of the European Society of Cardiology (ESC). Developed in collaboration with the European Heart Rhythm Association (EHRA). *Europace* 2013;**15**:1070–118.
12. van Deursen CJ, Blaauw Y, Wijtjens MI, Debie L, Wecke L, Crijns HJ et al. The value of the 12-lead ECG for evaluation and optimization of cardiac resynchronization therapy in daily clinical practice. *J Electrocardiol* 2014;**47**:202–11.
13. Chung ES, Leon AR, Tavazzi L, Sun JP, Nihoyannopoulos P, Merlino J et al. Results of the Predictors of Response to CRT (PROSPECT) trial. *Circulation* 2008;**117**:2608–16.
14. Foley PW, Stegeman B, Ng K, Ramachandran S, Proudler A, Frenneaux MP et al. Growth differentiation factor-15 predicts mortality and morbidity after cardiac resynchronization therapy. *Eur Heart J* 2009;**30**:2749–57.
15. Szulik M, Tillekaerts M, Vangeel V, Ganame J, Willems R, Lenarczyk R et al. Assessment of apical rocking: a new, integrative approach for selection of candidates for cardiac resynchronization therapy. *Eur J Echocardiogr* 2010;**11**:863–9.
16. Brunet-Bernard A, Marechaux S, Fauchier L, Guiot A, Fournet M, Reynaud A et al. Combined score using clinical, electrocardiographic, and echocardiographic parameters to predict left ventricular remodeling in patients having had cardiac resynchronization therapy six months earlier. *Am J Cardiol* 2014;**113**:2045–51.
17. Khatib M, Tolosana JM, Trucco E, Borrás R, Castel A, Berruzo A et al. EAARN score, a predictive score for mortality in patients receiving cardiac resynchronization therapy based on pre-implantation risk factors. *Eur J Heart Fail* 2014;**16**:802–9.
18. van Deursen CJ, Vernooij K, Dudink E, Bergfeldt L, Crijns HJ, Prinzen FW et al. Vectorcardiographic QRS area as a novel predictor of response to cardiac resynchronization therapy. *J Electrocardiol* 2015;**48**:45–52.
19. Mafi Rad M, Wijntjens GW, Engels EB, Blaauw Y, Luermans JG, Pison L et al. Vectorcardiographic QRS area identifies delayed left ventricular lateral wall activation determined by electroanatomic mapping in candidates for cardiac resynchronization therapy. *Heart Rhythm* 2016;**13**:217–25.
20. Engels EB, Alshehri S, van Deursen CJ, Wecke L, Bergfeldt L, Vernooij K et al. The synthesized vectorcardiogram resembles the measured vectorcardiogram in patients with dyssynchronous heart failure. *J Electrocardiol* 2015;**48**:586–92.