

Advances and Challenges in Cell Biology for Cultured Meat

Citation for published version (APA):

Martins, B., Bister, A., Dohmen, R. G. J., Gouveia, M. A., Hueber, R., Melzener, L., Messmer, T., Papadopoulos, J., Pimenta, J., Raina, D., Schaeken, L., Shirley, S., Bouchet, B. P., & Flack, J. E. (2024). Advances and Challenges in Cell Biology for Cultured Meat. *Annual review of animal biosciences*, 12, 345-368. <https://doi.org/10.1146/annurev-animal-021022-055132>

Document status and date:

Published: 15/02/2024

DOI:

[10.1146/annurev-animal-021022-055132](https://doi.org/10.1146/annurev-animal-021022-055132)

Document Version:

Publisher's PDF, also known as Version of record

Document license:

Taverne

Please check the document version of this publication:

- A submitted manuscript is the version of the article upon submission and before peer-review. There can be important differences between the submitted version and the official published version of record. People interested in the research are advised to contact the author for the final version of the publication, or visit the DOI to the publisher's website.
- The final author version and the galley proof are versions of the publication after peer review.
- The final published version features the final layout of the paper including the volume, issue and page numbers.

[Link to publication](#)

General rights

Copyright and moral rights for the publications made accessible in the public portal are retained by the authors and/or other copyright owners and it is a condition of accessing publications that users recognise and abide by the legal requirements associated with these rights.

- Users may download and print one copy of any publication from the public portal for the purpose of private study or research.
- You may not further distribute the material or use it for any profit-making activity or commercial gain
- You may freely distribute the URL identifying the publication in the public portal.

If the publication is distributed under the terms of Article 25fa of the Dutch Copyright Act, indicated by the "Taverne" license above, please follow below link for the End User Agreement:

www.umlib.nl/taverne-license

Take down policy

If you believe that this document breaches copyright please contact us at:

repository@maastrichtuniversity.nl

providing details and we will investigate your claim.

Advances and Challenges in Cell Biology for Cultured Meat

Beatriz Martins,^{1,*} Arthur Bister,^{1,*}
Richard G.J. Dohmen,^{1,2,*} Maria Ana Gouveia,^{1,*}
Rui Hueber,^{1,*} Lea Melzener,^{1,2,*} Tobias Messmer,^{1,2,*}
Joanna Papadopoulos,^{1,*} Joana Pimenta,^{1,*}
Dhruv Raina,^{1,*} Lieke Schaecken,^{1,*} Sara Shirley,^{1,*}
Benjamin P. Bouchet,^{1,3} and Joshua E. Flack¹

¹Mosa Meat B.V., Maastricht, The Netherlands; email: beatriz@mosameat.com, arthur.bister@med.uni-duesseldorf.de, richard@mosameat.com, maria@mosameat.com, rui@mosameat.com, lea@mosameat.com, tobias@mosameat.com, joanna@mosameat.com, joana@mosameat.com, dhruv@mosameat.com, lieke@mosameat.com, sara@mosameat.com, joshuaeflack@gmail.com

²Department of Physiology, Maastricht University, Maastricht, The Netherlands

³Cell Biology, Neurobiology and Biophysics, Department of Biology, Faculty of Science, Utrecht University, Utrecht, The Netherlands; email: b.bouchet@uu.nl

**ANNUAL
REVIEWS CONNECT**

www.annualreviews.org

- Download figures
- Navigate cited references
- Keyword search
- Explore related articles
- Share via email or social media

Annu. Rev. Anim. Biosci. 2024. 12:345–68

First published as a Review in Advance on November 14, 2023

The *Annual Review of Animal Biosciences* is online at animal.annualreviews.org

<https://doi.org/10.1146/annurev-animal-021022-055132>

Copyright © 2024 by the author(s). This work is licensed under a Creative Commons Attribution 4.0 International License, which permits unrestricted use, distribution, and reproduction in any medium, provided the original author and source are credited. See credit lines of images or other third-party material in this article for license information.

*These authors contributed equally to this article.



Keywords

cultured meat, cell biology, stem cells, biotechnology, sustainability, genetic engineering

Abstract

Cultured meat is an emerging biotechnology that aims to produce meat from animal cell culture, rather than from the raising and slaughtering of livestock, on environmental and animal welfare grounds. The detailed understanding and accurate manipulation of cell biology are critical to the design of cultured meat bioprocesses. Recent years have seen significant interest in this field, with numerous scientific and commercial breakthroughs. Nevertheless, these technologies remain at a nascent stage, and myriad challenges remain, spanning the entire bioprocess. From a cell biological perspective, these include the identification of suitable starting cell types, tuning of proliferation and differentiation conditions, and optimization of cell–biomaterial interactions to create nutritious, enticing foods. Here, we discuss the key advances and outstanding challenges in cultured meat, with a particular focus on cell biology, and argue that solving the remaining bottlenecks in a cost-effective,

scalable fashion will require coordinated, concerted scientific efforts. Success will also require solutions to nonscientific challenges, including regulatory approval, consumer acceptance, and market feasibility. However, if these can be overcome, cultured meat technologies can revolutionize our approach to food.

1. INTRODUCTION

Cultured meat (also referred to as cultivated meat) is a nascent biotechnology sector that aims to produce meat from cell culture rather than from the raising and slaughtering of livestock. This technology, along with other forms of cellular agriculture, has gained significant attention in recent years due to its potential to significantly reduce the negative externalities associated with the traditional meat and seafood industries, particularly with respect to environmental sustainability (such as greenhouse gas emissions and land and water usage), animal welfare, and food safety (1, 2). The first proof of concept, a burger produced from bovine primary stem cells, was unveiled a decade ago (3), and early products are now entering the market.

The process of cultured meat production involves the isolation and *in vitro* proliferation of animal cells (typically mammalian, avian, or fish) at a vast scale, usually prior to differentiation toward the tissue types found in meat (primarily skeletal muscle and fat). Many of these methods draw inspiration from the cell and gene therapy (CGT) industry, where cells have been harvested and manipulated outside of the body for medical applications for several decades (4), but price and scale considerations differ markedly. Various cell types can be used for this purpose, including embryonic stem cells (ESCs), induced pluripotent stem cells (iPSCs), primary cells, and immortalized cell lines (of various flavors; **Figure 1**) (5). While the choice of starting cells can impact regulatory and marketing, as well as scientific, aspects of the technology, all strategies for cultured meat production involve the detailed understanding and accurate manipulation of stem cells throughout a complex, multistep process.

We review the most important recent advances in cultured meat science, with a particular focus on cell biological aspects of process development. We highlight the key challenges that remain to be addressed to bring cultured meat to market and explore promising avenues for future development.

2. ESTABLISHMENT OF CELL BANKS

Cultured meat production creates an unprecedented demand for highly pure and proliferative cells. While cell banking production and quality procedures are well established in the CGT industry, the vastly increased cellular requirements for food production necessitate large-scale culture methods and upscaled cryopreservation solutions, even for the most upstream steps of production. The exorbitant costs of current cell banking practices are also prohibitive for direct translation to the food industry. As for many aspects of cultured meat production, scale and cost thus represent significant challenges for cell banking.

The first decision required during cultured meat bioprocess design is selection of a starting cell type (**Figure 1**), which has numerous ramifications for the downstream process (5). Whereas ESCs, iPSCs, and immortalized cell lines offer clear advantages over primary cells in respect to their ability to proliferate indefinitely, they also come with regulatory, consumer acceptance, and, particularly for ESCs, ethical concerns (6). Ideal cells should be easy and efficient to isolate, highly proliferative in low-cost media, responsive to simple differentiation protocols, and robust to environmental changes. Even within primary cells, many options abound. For cultured fat production, for example, options include fat- or bone-derived mesenchymal stem cells (7, 8), dedifferentiated

Cellular agriculture:

technologies that produce agricultural products, including meat and dairy, from cell cultures

Cell and gene therapy (CGT):

medical treatments that repair or replace damaged tissues using living cells or genetic material

Embryonic stem cells (ESCs):

totipotent stem cells derived from the inner cell mass of an embryo

Induced pluripotent stem cell (iPSC):

pluripotent stem cell generated via the reprogramming of somatic cells to express embryonic transcription factors

Primary cell: cell isolated directly from an organism and cultured without modification

Immortalized cell

line: cell line that has spontaneously or otherwise acquired the ability to undergo indefinite cell division, bypassing normal cellular senescence checkpoints

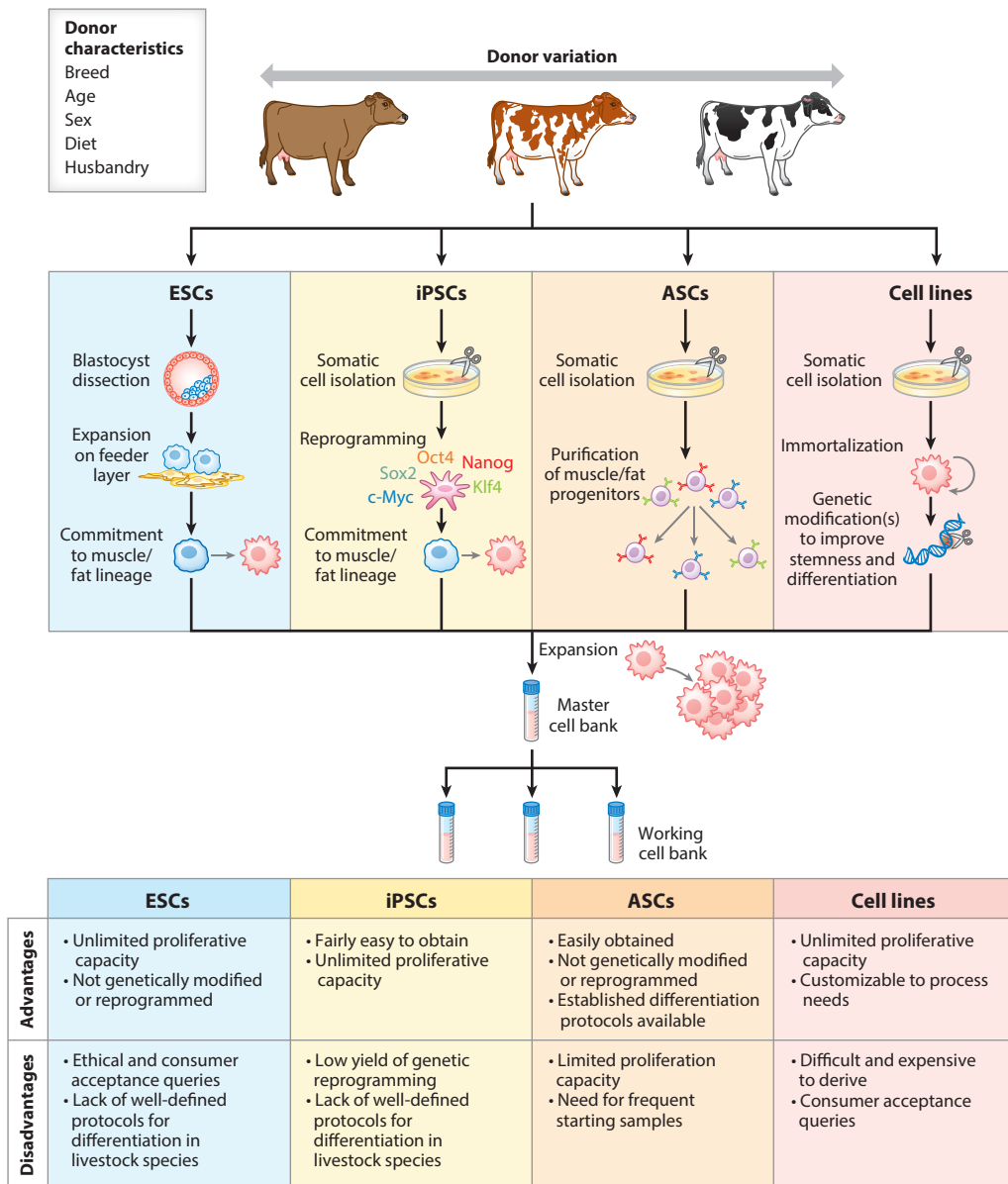


Figure 1

Cell banking considerations for cultured meat production. Cell banks can be established from a variety of starting cell types and donor tissues. Although some approaches may be less susceptible to variability arising from donor animal differences, all rely on an initial tissue sample. Different strategies present different sets of challenges, and each has advantages and disadvantages that need consideration. Abbreviations: ASC, adult stem cell; ESC, embryonic stem cell; iPSC, induced pluripotent stem cell.

fat cells (9), and even trans-differentiated muscle satellite cells (SCs) (10). However, most intramuscular fat *in vivo* derives from a population of mesenchymal cells found in skeletal muscle called fibro-adipogenic progenitor (FAP) cells (11), which mediate fatty and fibrotic tissue accumulation in muscle and hence might be more likely to recapitulate traditional intramuscular fat (12).

Satellite cell (SC): muscle-resident stem cell population with myogenic potential

Ultimately, the choice of cell type for cultured meat production depends on the specific needs of a particular production process and philosophy, making it hard to draw robust conclusions at this early stage of the field as to which strategies will ultimately be widely adopted.

Regardless of the chosen strategy, cell banking requires the isolation of stem cells from a tissue sample, and donor animal selection is thus an important question. Cultured meat products have been developed from various species (13), but these cells may exhibit vast differences in growth behavior and medium requirements (14), posing potential hurdles for upscaled production. Age, sex, breed, and the sampling site itself may also affect stem cell yield and quality (15). For instance, proliferation rates can vary among cattle breeds (16). However, although numerous characteristics might be relevant, there is a dearth of literature comparing these traits with respect to cultured meat. Indeed, it is unclear to what extent physiological differences between donor animals are reflected in the yield and quality of derived stem cells at all. As the cultured meat field grows, producers may have greater control over other aspects of donor biology, both intrinsic (influencing genotype via selective breeding) and extrinsic (such as diet and husbandry). The extent to which manipulation of these factors can help to optimize cultured meat production processes remains unclear.

Primary cell-based bioprocesses in particular will require repeated sample collection (17), as well as isolation of stem cells on an unprecedented scale, hurdles that may prove challenging to resolve. Development of equipment for minimally invasive collection of donor samples in an aseptic and reproducible fashion will be required. The key challenge inherent to all cell isolation processes is efficient but gentle extraction, so as to obtain high yields of quality cells. Often achieved through physical mincing and then enzymatic dissociation, semi- and fully automated solutions for cell isolation will require tailoring to the tissue of interest and be able to accommodate differences arising from donor and sampling variability (18). The resulting cultures invariably consist of a mixture of cells and require further purification. This problem has been solved in various industries in several ways, though large-scale purification is likely to remain challenging from a cost perspective. For bovine stem cells, advances have been made in the characterization of the cellular heterogeneity of starting samples, which helped to identify reliable antibody panels for flow-based or magnetic cell sorting (12, 19, 20). Such strategies tend to result in significantly higher yields and purities than pre-plating or density-gradient centrifugation methods (21). Nevertheless, development of antibody panels for agriculturally relevant species is a challenge that should not be underestimated (in our experience, only approximately a quarter of human antibodies have been compatible with bovine). Cell-type-selective media formulations and attachment factors may help to enrich the desired cell type(s) in heterogeneous cultures, helping avoid technically and economically challenging cell purification procedures (12, 20). Similarly, whereas protocols for the generation, purification, and differentiation of ESCs and iPSC lines from model species are well-defined and thoroughly described in the literature, research on these cell types from livestock species is limited to a small number of recent studies (22, 23).

Cell banking for cultured meat will necessitate cell cryopreservation on hitherto unseen scales, regardless of cell type (24). Although existing solutions for large-scale bag-freezing of cells will initially be feasible, new solutions will be required as the industry scales. Large-scale automation of processes such as handling, filling, and labeling will be essential for standardization and optimal cell preservation. Cell banking is likely to be somewhat centralized, raising logistical and economic challenges related to the transport of large quantities of cryopreserved cells, should cultured meat scale to the point where it replaces a significant portion of the traditional meat industry. Chemically defined and animal component-free cryopreservation media are already available and will be the norm for regulatory reasons, although further cost reduction will be required.

A final major challenge with respect to cell banking is quality and safety assurance. Although some principles can be transferred from the CGT industry, diverging cell sources and downstream uses, along with the economics of the respective industries, will necessitate different approaches. Master and working cell banks must be subjected to rigorous testing to ensure freedom from adventitious agents (such as viruses and *Mycoplasma*); that cells are of high purity; and, crucially, that they are genetically stable (25). The scale of testing required will necessitate the development of new assays, with high accuracy and low cost, regardless of the cell types or strategies used. For example, detection and identification of cell culture contaminants by next-generation sequencing could be an approach with broad applicability (26). Overall, whilst cell banking certainly presents substantial challenges for cultured meat production, with further development and economies of scale, solutions likely will be found to overcome these hurdles.

3. PROLIFERATION AND STEMNESS

Cultured meat processes rely on the extensive proliferation of cells to generate sufficient biomass. Cell biological optimization of these promitotic conditions is critical to achieve proliferation phases that are robust, efficient, cost-effective, and animal-free. Choice of cell type dictates the challenges to an extent: Whereas primary stem cells invariably lose proliferation and differentiation capacity during long-term culture (a phenomenon described as loss of stemness), stable maintenance of pluripotent cells can require complex, expensive medium formulations (27, 28). Understanding how and why cell biology changes during proliferation will inform the design of interventions allowing longer expansion phases and differentiation at higher population doublings (PDs), increasing cultured meat yields and reducing process variability and costs.

The first challenge is achieving robust proliferation with medium formulations that are free of animal-derived components, particularly fetal bovine serum. In vivo, the stem cell niche [including neighboring cell types and the extracellular matrix (ECM)] provides intricate, context-dependent signals that direct cell behavior, which are hard to recreate in vitro. Nevertheless, serum-free medium formulations for proliferation of various cell types, including bovine SCs and FAPs, have now been developed, an important advance for the field (29, 30), whereas serum-free medium for iPSCs has been available for some time (31). These typically include albumin and cocktails of growth factors that activate important pathways related to proliferation and stemness (30, 32, 33), although formulations must be optimized for each particular cell type and species. These components are costly, and the switch to food-grade components and/or alternatives with similar performance is the next step in media development (34). Recombinant glycoprotein attachment factors also represent a significant cost in some processes (20, 35), and replacement of such factors with peptides containing adhesive motifs (such as RGD or YIGSR) is a promising area.

Maintenance of prolonged proliferation capacity in these media is a further cell biological challenge. During long-term culture, primary cells invariably enter a senescent state characterized by permanent cell-cycle exit, widespread gene expression changes, and striking cellular flattening and enlargement (36, 37) (**Figure 2**). Decreases in proliferation occur even prior to full senescence (reviewed in 38). In bovine SCs, proliferation rates drop to approximately 0.6–0.8 PDs per day until cells enter senescence at 20 to 30 PDs (19, 30), whereas the observed proliferative limit in FAPs is slightly higher (12). For industrial cultured meat production, proliferative capacity must be extended well beyond these limits (17). The causative relationship between cellular aging and decreased proliferation is key to understanding and addressing this challenge. Aging is characterized by an array of cellular changes, including altered signaling pathway activity, shifts in metabolism and morphology, and the accumulation of mutations at the genetic and epigenetic level (38). Various interventions are thus promising. Inhibition of p38 α/β MAPK signaling with

Stemness:

capacity of a stem cell to proliferate and differentiate

Population doubling (PD):

number of times a culture of cells has doubled in number through mitotic division

Fetal bovine serum:

blood-derived product obtained from fetal calves, commonly used as a supplement in cell culture media

Extracellular matrix (ECM):

complex network of proteins, glycoproteins, and polysaccharides that surrounds and supports cells in tissues

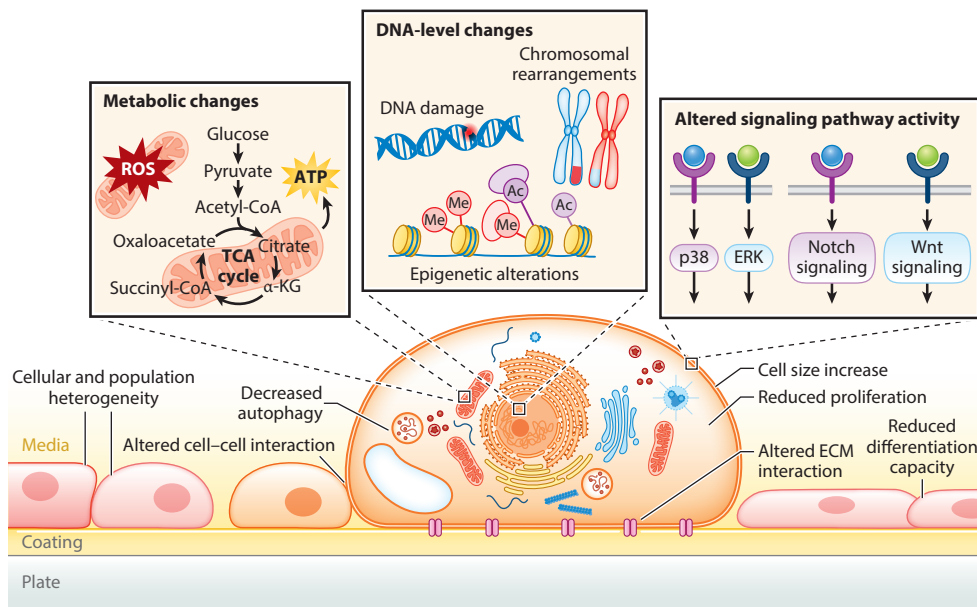


Figure 2

Hallmarks of cellular aging in vitro. Aging primary stem cells show a decreased proliferation and differentiation capacity, accompanied by an array of intracellular changes that affect cell size, morphology, and function, as well as interaction with the extracellular environment. Abbreviations: ECM, extracellular matrix; ROS, reactive oxygen species; TCA, tricarboxylic acid.

small molecules, such as SB203580, increases proliferation and differentiation capacity in bovine SCs (19), and high-throughput screening for compounds targeting other pathways may identify combinations that maintain stemness without resort to genetic engineering techniques (Section 7). Concentrations of NAD^+ decrease as cells approach senescence (39), and media compositions likely will need to be adjusted to account for (or avert) metabolic changes in glycolysis and oxidative phosphorylation. The extent to which DNA damage and/or epigenetic changes underlie cell aging phenotypes remains unclear. Telomere shortening eventually induces DNA damage response signaling (36, 40), and changes in DNA methylation at loci previously linked to senescence have been observed in various cell types (41). Limiting generation of reactive oxygen species, for example, by culturing cells in hypoxic conditions (42, 43) or by stimulating autophagy in aging cells (44), could be a promising approach to reduce oxidative stress and maintain proliferative capacity.

Primary cells also show a decline in differentiation potential with increasing PDs (12, 30, 33) prior to signs of senescence emerging, suggesting that loss of proliferation and differentiation capacity may be partly independent processes. Epigenetic changes may explain this reduced differentiation capacity; methylation of myogenic genes varies considerably in SCs from old and young muscle (45, 46). Several age-related signaling pathways have been identified that affect differentiation; SCs from aged donors show increased p38 α/β MAPK, impaired Notch, and alterations in Wnt signaling (47–49). Notch and Wnt are also linked to lower adipogenic potential in FAPs of aged animals (50). Whether these are also the key drivers in vitro remains to be elucidated, although targeting these pathways through media supplementation with growth factors (including fibroblast growth factor, hepatocyte growth factor, and insulin-like growth factor 1) has been shown to promote long-term culture of SCs (51). Other pathways that might

be important include JAK/STAT (Janus kinase/signal transducer and activator of transcription), PDGF (platelet-derived growth factor), and Hippo (52, 53). Compared with growth factors, small molecules that target distinct enzymes have the advantage of higher specificity but might also face different regulatory hurdles. Another important parameter in this respect could be substrate stiffness, which cells can sense in several ways. In vitro, cells encounter a stiffer and less complex extracellular environment, and increased ECM-related gene expression is a feature of cell adaptation and aging (54, 55). Ultimately, substrate stiffness for different cell types must be tested empirically but could offer routes for optimization; for instance, MYOD1 expression is highest in SCs cultured on 15-kPa substrates when compared to 5, 30, or 45 kPa (56).

A final challenge is cellular heterogeneity, which can occur through overgrowth by contaminating cell types or the emergence of different subpopulations or cellular states and can affect growth rates and variability of proliferation phases (20). Single-cell technologies have increased understanding in this respect (57), demonstrating that FAP cultures, for example, often contain both adipogenic and fibrogenic subpopulations (55). In SCs, subpopulations with differing self-renewal capacities may emerge upon serial proliferation (58). Less hierarchical models suggest that SCs in vitro may exist in parallel cell states that are dynamic and interchangeable during one culture passage, and which might change during cellular aging (20). Without tight controls, similar heterogeneities can also emerge within pluripotent cell cultures (27). Optimizing cultures to promote specific subpopulations or states is an important consideration for the design of proliferation phase conditions, which ultimately still represents one of the most challenging areas for cultured meat development.

4. DIFFERENTIATION (SIGNALING)

4.1. Muscle

Although some early cultured meat processes do not involve a differentiation step, consumer acceptance requires accurate mimicry of traditional meat, necessitating the creation of mature muscle fibers that recapitulate the full functionality, taste, and texture of skeletal muscle. Differentiation of SCs in vivo is well understood biologically (59, 60) and involves the induction of cell cycle arrest, sequential expression of master transcriptional regulators, and the fusion of myoblasts into multinucleated myofibers (**Figure 3**). However, recreating these steps in vitro, with additional constraints with respect to cost and use of animal-derived biomaterials, presents a major challenge.

Myogenic differentiation is an intricate process, involving interactions of multiple cell types and extracellular factors. In vitro, it is traditionally induced by serum starvation (an abrupt withdrawal of serum), which promotes a powerful cell cycle arrest, in turn initiating the differentiation cascade (61). Achieving a similar cell cycle arrest, and activating the same transcriptional programs in an animal-free fashion, while also compensating for the lack of stem cell niche, represents a tricky conundrum. Most culture methods replicate only a subset of the physiological inputs that impact SC differentiation during muscle regeneration in vivo, which include innervation, hormonal signaling, vasculature, and nutrition (62, 63). Generating serum-free formulations that drive robust differentiation across a range of donor animals (and even species) has proven to be challenging, but recent progress has been made using transcriptomic approaches to identify cell-surface receptors [including LPAR1 (lysophosphatidic acid receptor 1)] upregulated during the early phase of differentiation (33). Supplementing serum-free basal medium with ligands for these receptors resulted in differentiation efficiencies comparable to serum starvation. Further small molecules, including ERK (extracellular signal-related kinase) inhibitors, that drive robust differentiation and myoblast fusion in the absence of serum starvation have subsequently been identified (64). Nevertheless, major challenges remain with respect to understanding the complexity of these

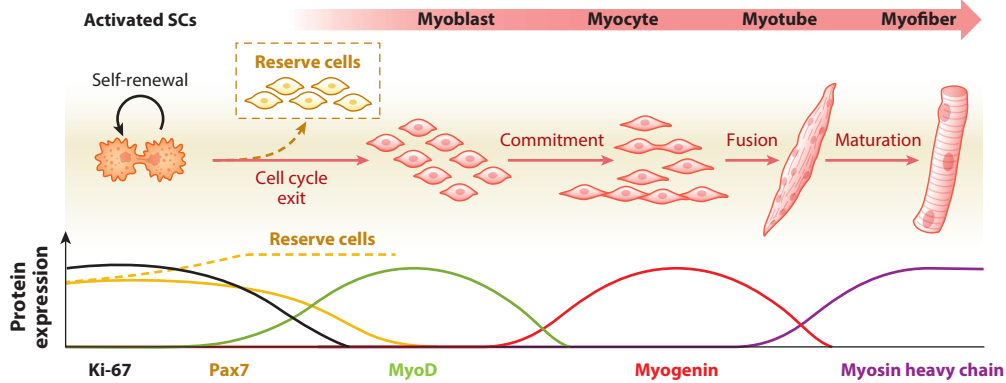


Figure 3

Overview of myogenic differentiation. Activated SCs differentiate into myoblasts or adopt a quiescent reserve cell phenotype that maintains the muscle stem cell pool. Myoblasts further differentiate into myocytes, which fuse to form multinucleated myotubes and subsequently mature into myofibers. This process is regulated by a hierarchy of transcription factors, including MyoD and myogenin, which drive the expression of muscle-specific genes. Abbreviations: MyoD, myoblast determination protein; Pax7, paired box protein 7; SCs, satellite cells. Figure adapted from Reference 60 (CC BY 4.0).

signaling pathways, and with the costs associated with stimulating them. For more pluripotent starting cell types, such as ESCs and iPSCs, robust induction of myogenic differentiation is likely to be even more challenging (65).

Cellular heterogeneity during myogenic differentiation *in vitro* poses an additional challenge (66). *In vitro* reserve cells (RCs, **Figure 3**), which are specified during differentiation but do not express myogenic transcription factors, reflect some properties of quiescent satellite cells *in vivo* where self-renewal ability is critical to the physiological repair of muscle. However, they are undesirable for cultured meat purposes because they reduce the proportion of differentiated cells (67). Although still poorly understood, advances have been made with respect to the signaling pathways that regulate RC formation. Notably, inhibiting Notch signaling can induce fusion of a subpopulation of RCs (68), and further adjustments could likely minimize the presence of RCs. Reaching the highest levels of maturity, with as many functional characteristics of *in vivo* muscle fibers as possible [including high concentrations of actomyosin, sarcomere organization (69), and myofiber contractility (70)], will nevertheless require further advances. One area of research in this respect is the development of culture medium formulations that support the maturation of fused cells into protein-rich myotubes. Several small molecules, including Notch and transforming growth factor- β 1 inhibitors, have been identified as potential enhancers of maturation in iPSC-derived myotubes (71). Even with fully optimized media, however, 2D culture systems are fundamentally limited, highlighting the importance of tackling differentiation in the context of 3D muscle constructs (Section 5.1).

Reserve cells (RCs):

quiescent, non-differentiating population of cells that emerge during myogenic differentiation

4.2. Fat

Although composed mainly of skeletal muscle tissue, fat is also essential for achieving the texture and flavor of meat (72). Adipogenesis is a complex, dynamic process during which cells undergo a significant shift in metabolism and accumulate large amounts of lipids (predominantly triglycerides) (73). This transformation drives the cells to become fully differentiated adipocytes: large spherical cells containing a unilocular lipid droplet (**Figure 4**). In living tissue, this process is affected by interaction with neighboring cells, surrounding ECM, and systemic physiological cues

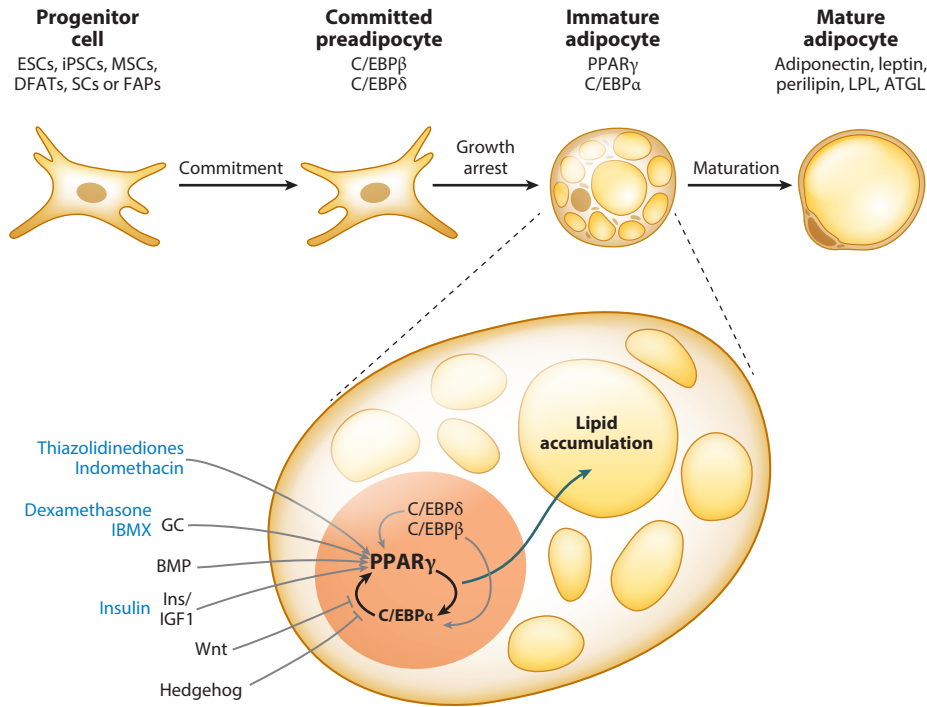


Figure 4

Regulation of adipogenesis *in vitro*. Adipogenic differentiation is regulated by waves of transcriptional activity. Inducers in the differentiation medium (*blue*) activate master regulators of adipogenesis, including PPAR γ and C/EBP α . Signaling molecules like glucocorticoids, BMPs, and insulin can activate PPAR γ and/or C/EBP α to induce preadipocyte differentiation, while other pathways suppress adipogenesis through direct inhibition of PPAR γ -C/EBP α or other pro-adipogenic signaling cascades. Abbreviations: ATGL, adipose triglyceride lipase; BMPs, bone morphogenetic proteins; C/EBP, CAAT/enhancer binding protein; DFATs, dedifferentiated fat cells; ESCs, embryonic stem cells; FAPs, fibro-adipogenic progenitors; GC, glucocorticoid; Ins/IGF1, insulin/insulin-like growth factor 1; iPSCs, induced pluripotent stem cells; LPL, lipoprotein lipase; MSCs, mesenchymal stem cells; PPAR γ , peroxisome proliferator-activated receptor gamma; SCs, satellite cells.

(74, 75). Replicating these interdependent signals *in vitro* is a difficult but critical challenge for cultured meat, which will lead to closer mimicry of animal fat tissue.

Adipogenic differentiation traditionally relies on the use of insulin, dexamethasone, and 3-isobutyl-1-methylxanthine, combined with peroxisome proliferator-activated receptor (PPAR) γ activators such as thiazolidinediones or indomethacin (76) (**Figure 4**). These molecules function independently of serum; hence, animal-free differentiation of adipocytes has not proven as challenging to solve as for muscle. However, the food compatibility of such cocktails remains unclear (77). The differing nature of adipogenesis between model species (such as humans and mice) and ruminants presents a further challenge. For example, cattle use acetate rather than glucose as the principal precursor for lipogenesis (78). Mitić et al. (77) recently demonstrated that insulin and rosiglitazone are sufficient to induce fat differentiation in primary bovine, porcine, and ovine adipogenic precursor cells. Supplementation of cultures with lipid concentrates or single fatty acids is also known to induce lipid accumulation in fish and chicken (79, 80). However, whether this phenomenon is adipogenesis related, or simply passive lipid accumulation, is unclear. Furthermore, it can be costly and cytotoxic and may alter the lipid profile of the cells (81).

Hydrogel: 3D network of hydrophilic polymers that can absorb and retain water

Scaffold: 3D structure that provides mechanical support for tissue growth or differentiation

Aggregate: self-forming clump or cluster of cells that are physically connected by cell–cell interactions or via extracellular matrix

One of the main obstacles for cultured fat production is achieving a high level of differentiation in a robust and cost-effective fashion. Traditional 2D differentiation methods often lead to partially differentiated adipocytes with accumulation of lipids in small multilocular lipid droplets (76). Additionally, the current cost of reagents and high media:cell ratios, combined with lengthy differentiation times (often 4–6 weeks), make large-scale production of cultured fat unaffordable. One important advance will be the identification of more potent small molecules or bioactive compounds that directly activate master regulators of adipogenesis (including PPAR γ and C/EBP α), increasing maturity and decreasing differentiation time. Development of 3D culture systems that better mimic the *in vivo* microenvironment and improve differentiation efficiency is also required to reduce the need for expensive and complex differentiation cocktails, and to achieve more consistent and efficient differentiation across different cell types and species (82).

Accurate imitation of the lipid composition of animal fat is another challenge. Understanding the metabolic pathways underlying fatty acid synthesis and tuning the media formulations to provide the ideal substrates are likely to be the main bottlenecks in this respect. There is also a need to develop more sensitive and high-throughput methods for detecting and quantifying lipid volumes and composition, particularly in small samples, for research and development purposes (83). Ultimately, addressing these challenges will be crucial for improving the nutritional and sensory quality of cultured meat. The challenge is to balance the cost and robustness of the differentiation process while still achieving a high level of differentiation efficiency and producing fat with desirable properties for use in food products. In the future, it may be possible to enhance the nutritional quality of cultured meat by modifying fatty acid composition, resulting in fat that contains lower levels of unhealthy saturated and trans-fats and higher levels of beneficial unsaturated fats, while still maintaining the authenticity of the final product.

5. DIFFERENTIATION (TISSUE FORMATION)

5.1. Muscle

Inducing myogenic differentiation in a robust fashion is necessary but not sufficient for the creation of edible skeletal muscle constructs. Various features of such systems are important for the formation of stable, scalable tissues, including cell physiology, medium composition, and mechanical and biochemical properties of biomaterials. Two-dimensional myogenic cultures are characterized by a low state of maturation, as cells adopt a random organization and detach from the substrate as they mature (84), but without careful engineering these issues can also occur in 3D tissue constructs.

Defining a low-cost, animal-free biomaterial for creation of hydrogels and/or scaffolds that support myoblast fusion and maturation remains a major challenge for cultured meat production and has been discussed at length elsewhere (85, 86). Cells must be able to adhere and interact, yet the material must also be degradable and provide mechanical resistance as contractility develops (**Figure 5**). Recent advances have included the use of soy and alginate as biomaterials for cultured muscle development, both of which are animal-free and food-grade materials with their own advantages and disadvantages. For textured soy protein scaffolds, additional functionalization is unnecessary for adhesion (87). Conversely, alginate can be used to create self-assembling, tunable hydrogels with beneficial mechanical properties and can degrade as cells migrate and secrete their own ECM (88, 89). For biomaterials that do not readily support cell attachment, functionalization with short peptide sequences is an attractive option. RGD-alginate is a well-studied system in tissue engineering (90, 91) and might offer a promising approach for cultured meat as well, although additional peptide sequences that more closely mimic native ECM might be beneficial for attachment, migration, and maturation. For cell types that proliferate readily in aggregates,

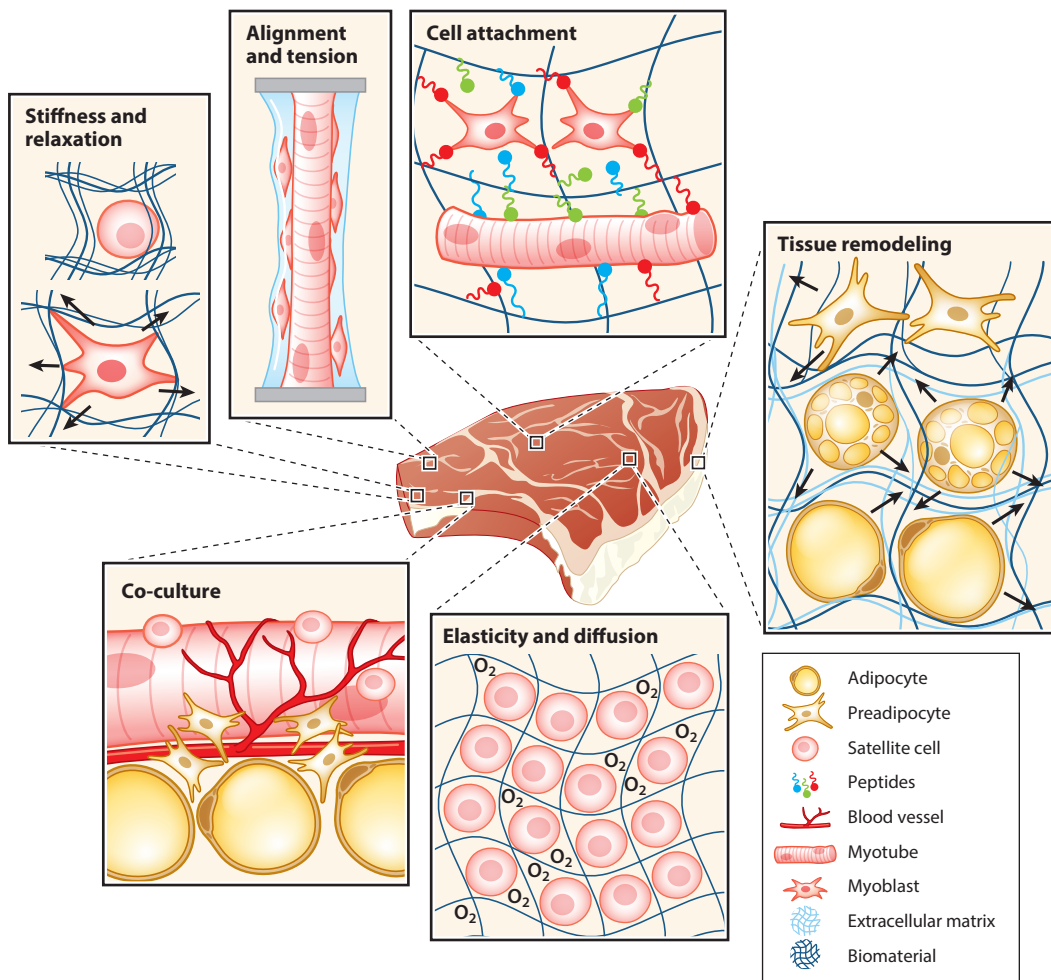


Figure 5

Biomaterial property considerations for optimal tissue engineering for cultured meat. A biomaterial must offer sufficient attachment, stability, and flexibility for the cell type being cultured, as well as the tissue being produced, such that sufficient differentiation and maturation can occur. Three-dimensional constructs will inevitably be limited in size without active transport of gases and nutrients.

differentiation in situ is also an attractive option from a bioprocess and economic perspective (because additional biomaterials and/or disaggregation steps are not required), although the level of differentiation obtained remains poorly understood in such systems (92, 93).

As mentioned (Section 4.1), achieving highly mature muscle is another major challenge that must be solved to develop products with sensory and nutritional characteristics matching those of traditional meat. Differentiation phases in cultured meat processes are typically on the order of 7–14 days, compared to months or years in vivo, although the speed with which muscle regeneration can occur in vivo suggests that achieving maturation on these timelines is not insurmountable. Once 3D culture systems are robust enough to allow fusion and early maturation, electrical pulse stimulation can be applied to stimulate contraction, promoting maturation and muscle protein accumulation (94). How electrical pulse stimulation might be deployed in large-scale bioreactors

Bioreactor: large vessel for producing biological products, such as cells

is unclear, however, and supplementation of acetylcholine (95) or other small molecules may represent a more scalable approach in this context.

5.2. Fat

Adipogenic tissue engineering poses related but distinct challenges to those discussed for muscle. Compared to highly structured skeletal muscle, fat tissue comprises more loosely organized connective tissue connecting large numbers of adipocytes (74), and lower degrees of cell motility and interaction are required during differentiation. Tissue constructs must nevertheless provide the flexibility to mature and sufficient cohesion to create a tissue-like structure (**Figure 5**). Several viable strategies for cultured fat production have been described in recent years and are reviewed extensively elsewhere (96, 97).

In the case of aggregate-based proliferation, an important decision is whether to use a hydrogel or scaffold for differentiation at all. Adipogenesis can occur in aggregates, as evidenced by adiponectin secretion and accumulation of lipid droplets (98), simplifying the process and avoiding costs and challenges related to biomaterial degradation and off flavors. However, a key advantage of some biomaterial-based systems, such as alginate hydrogels (12, 99), is that they can be extruded in various shapes, including microfibers, sheets (97), or beads, potentially allowing for larger and more complicated structures. Cell encapsulation also provides stability and cohesion, protecting against shear stress in bioreactor contexts (100). Regardless of the chosen strategy, the primary tissue engineering challenge remains ensuring proper gas and nutrient exchange, which limits the size of 3D constructs unless vascularization (or other channeling to the construct interior) can be achieved. Both solutions are possible on a laboratory scale but have cost, robustness, and scalability limitations that make them unsuitable for cultured meat applications without further development (96, 97).

Achieving full adipocyte maturation in short time frames is a further challenge in the design of cultured fat constructs. Unlike for muscle, it is unclear whether cell attachment to the substrate is required at all for adipogenesis, given observed results in alginate constructs devoid of functionalization, although contributions from cell–cell contact and attachment to self-deposited ECM cannot be discounted (12). Stiffness certainly has a major effect on differentiation, which tends to be better in hydrogels with lower Young's modulus (101). The cellular mechanisms underlying this are not fully understood, however; lower stiffness could contribute to increased induction of adipogenic pathways, improved flexibility within the biomaterial to allow lipid accumulation, or a combination of these and other factors. Hydrogels and scaffolds that do not require the use of animal-derived ECM or costly synthetic peptides are obviously preferred.

5.3. Co-Culture

The complexity of skeletal muscle arises from the function and interaction of multiple different cell types (102). To mimic this cellular heterogeneity in cultured meat products, co-culture approaches aim to differentiate at least two cell types in parallel, with several purported advantages (**Figure 5**). Paracrine or juxtacrine interactions between different cell types might improve the behavior of one or both. For instance, SCs cultured in the presence of endothelial and smooth muscle cells show increased alignment and higher expression of myogenic regulator myogenin on soy scaffolds, potentially through the deposition of ECM (87). Similar effects were observed when differentiating SCs in the presence of FAPs (103). Arguably the most tantalizing prospect of co-cultures is the introduction of vasculature that would allow increased thickness of tissues (104), and thus the production of cultured steaks.

However, although conceptually plausible, the technical difficulty of these approaches currently outweighs potential benefits. Vascularization by endothelial cells takes time, meaning cells

in the interior of thicker constructs are still deprived of nutrients. Furthermore, engineered vasculature in larger tissue constructs shows only limited functionality and stability. To differentiate multiple cell types in parallel, it is also necessary to create media that supports the co-differentiation of two or more cell types (105). Moreover, interactions between cell types may reduce, rather than increase, the extent of differentiation, as observed for the adipogenic differentiation of FAPs in the presence of SCs (103). Finally, bioprocess complexity increases considerably; multiple cell types must be proliferated either as co-cultures (introducing potential overgrowth effects) or as monocultures that are harvested and seeded simultaneously (introducing logistical challenges). Given the current technical challenges of co-culture and engineered vascularization, development of scalable cultured meat products that relies on parallel differentiation of multiple cell types is a tantalizing challenge that remains some way off. However, higher product complexity for improved texture and appearance might be achieved earlier through post-culture assembly of monocellular tissue constructs (106).

6. UPSCALING

Cultured meat requires the proliferation of cells at unprecedented scales. This expansion typically occurs in large bioreactors, which maximize cost efficiency through higher cell:medium ratios; reduced handling time; and active control of pH, dissolved oxygen, and temperature. The overriding challenge in these cultures is therefore to ensure sufficient nutrient delivery and waste removal at high cell densities. Understanding cellular responses to metabolic and mechanical stresses is thus critical for translating research-scale findings into robust and scalable bioprocesses (**Figure 6**). Overcoming biological limitations to process design, such as anchorage dependence (allowing for suspension growth of previously adherent cells), remains a challenge for future genetic engineering strategies (Section 7).

Cell density is a crucial operational target, as it directly determines both bioreactor yield and run cost. A major biological challenge is thus to leverage understanding of cellular metabolism to develop media formulations that maintain rapid growth, while minimizing production of growth-inhibitory metabolites such as ammonia (29). Understanding pathways involved in nutrient and waste metabolite sensing will inform design of interventions to metabolically reprogram cells for better bioprocess suitability (107). Although glucose is the primary carbon source fueling anabolic activity, excess can result in reduced proliferation (108). Glucose availability stimulates cellular anabolic responses through activation of the mammalian target of rapamycin complex 1 (mTORC1) (109). Amino acid supplementation also converges on mTOR signaling and is crucial to maintaining steady growth rates. Because mTOR controls several cellular responses, including cell size, proliferative rate, and glucose consumption rate, manipulating this signaling network offers intriguing possibilities for bioprocess optimization (110). Screening approaches to identify inhibitors have resulted in potential therapies to target aberrantly proliferating cells (111). For cultured meat, where cell proliferation is the ultimate goal, enhancing mTOR signaling via genetic or pharmacological strategies is underexplored and may prove a valuable direction for future research.

As a result of glucose and amino acid metabolism, waste metabolites, including lactate and ammonia, are released into the medium (112, 113). This accumulation can itself induce metabolic changes, resulting in altered growth profiles (114, 115) and protein production (116). Controlling accumulation of these metabolites is a key challenge for ensuring robust bioprocesses with maximal growth. In small-scale systems, regular medium changes are feasible. However, this solution is uneconomical at scale, with proliferation media typically accounting for 55–95% of the total cost of cultured meat (117). Other strategies include replacing glucose and glutamine with alternative sugars and amino acids (118, 119); for example, replacing glutamine with TCA (tricarboxylic

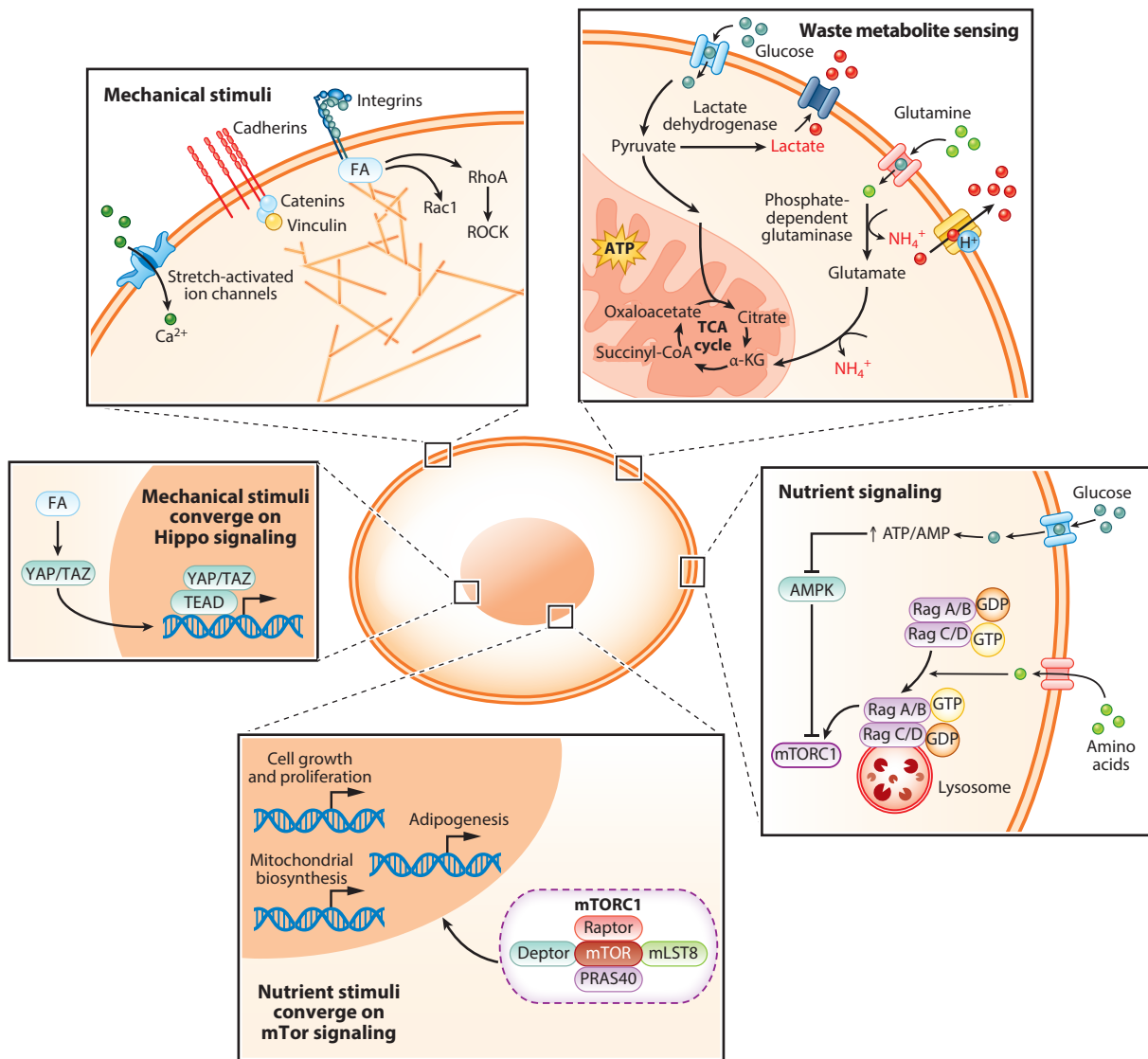


Figure 6

Cues and pathways involved in sensing of metabolic and mechanical stresses. Proliferating cells in upscaled systems, such as bioreactors, experience and sense a wide variety of stresses, the understanding and mitigation of which are crucial for achieving robust outcomes at scale. Similar considerations may apply for differentiation systems. Abbreviations: $\alpha\text{-KG}$, alpha-ketoglutarate; AMPK, adenosine monophosphate-activated protein kinase; FA, focal adhesion; GDP, guanosine diphosphate; GTP, guanosine triphosphate; TCA, tricarboxylic acid. Figure adapted from images originally created in BioRender.

acid)-cycle intermediates such as α -ketoglutarate can reduce ammonia production (120). Nutrient concentrations required in the medium are largely set by the affinities of the cellular transport machinery, but because consumption rates are not uniform, medium recycling can also improve resource utilization. Partial recycling reduces the concentration of growth inhibitory metabolites, and given predictable rates of consumption, depleted nutrients can be topped up. Methods that have been explored to separate cells from medium include centrifugation and filtration (121), or

membrane-based filtration such as dialysis (122) and ultrafiltration/diafiltration (123). Challenges remain, however, with deploying these methods at scale, including contamination risk, nutrient loss, increased batch-to-batch variability, and potential cell death. Accurate in-line measurement of key metabolites is likely a prerequisite. From a cultured meat perspective, understanding the underlying biology that drives variation in nutrient consumption rate and designing interventions to minimize it are therefore central to a cost-effective scale-up.

A major challenge derived from the need for bioreactor cultures to be physically agitated is to ensure uniform nutrient and oxygen availability. The resulting turbulent flows generate shear stresses on cells (124), with higher rates of agitation in bioreactors largely correlating with reduced proliferation and increased cell death (125). Although the magnitude of these stresses can be approximated by metrics such as the Kolmogorov length scale or energy dissipation rate (126), the underlying cellular pathways that sense them remain to be elucidated. Shear stress can be partly alleviated by altering bioreactor design or through addition of protectants such as Pluronic F68 (125), but whether there exist endogenous mechanisms that can be exploited to protect cells from these stresses is an open question. Studies on fluid flows under controlled conditions show that low-shear regimes may actually trigger shear-protective signaling pathways; in endothelial cells, elevated bioavailable nitric oxide (NO) can act as a juxtacrine signal to prevent apoptosis (127). Even in myoblasts, hydrodynamic forces can induce NO production as a consequence of stretch-activated channel activity (128). Although not much is known about the efficacy of pharmacologically triggering NO signaling for its protective effects in bioreactors, it may prove to be a fruitful area of future research. Many mechanical stimuli sensed by cells converge on the Hippo signaling pathway, which controls nuclear localization of the transcriptional coactivators YAP (yes-associated protein) and TAZ (transcriptional coactivator with PDZ-binding motif). Mechanical stimuli from fluid forces block YAP activity and promote differentiation (129), whereas exogenous YAP expression can induce stemness in tissue-specific progenitor cells (130). Unpicking upstream regulators of Hippo signaling, or using LATS1/2 inhibitors to boost YAP activity (131), might also serve as a tool to modulate growth inhibitory or pro-differentiation cues induced by culture under turbulent flow conditions. There is therefore promise in leveraging fundamental cell biological insight to improve the physical stress tolerance of cells and complement engineering advances in low-shear bioreactor design.

Genetically modified organism (GMO): cell or organism with DNA altered using biotechnology to produce desired traits

7. GENETIC ENGINEERING FOR CULTURED MEAT

Aging of cells *in vitro* dramatically limits their proliferative and differentiative capacities, reducing protein and fat yields. For primary cell-based bioprocesses, there is a need to repeatedly sample new starting material from donor animals. Differences between samples and/or donor animals also hinder the generation of robust cell culture models for cultured meat research and development. Genetic engineering tools therefore offer significant advantages with respect to the establishment of optimized cell lines for production of cultured muscle and fat, but must be balanced against consumer and regulatory concerns, particularly with respect to genetically modified organisms (GMOs).

As discussed (Section 3), cellular life span is a major bottleneck in the use of primary cells for cultured meat bioprocesses. Proliferation requires phosphorylation of the retinoblastoma protein by cyclin-dependent kinases (CDKs) that drive cell cycle progression (132). However, DNA damage originating from telomere shortening and other stresses, including reactive oxygen species, leads to the accumulation of CDK inhibitors including p16 and p21, ultimately resulting in senescence and cell cycle arrest (40, 133). Abolishing this phenomenon is referred to as immortalization and offers significant advantages for cultured meat with respect to the robust, cost-efficient

scale-up of production processes without the need to sample new starting material. Whereas some approaches employ spontaneously immortalized cells (92, 134), other strategies involve the overexpression of telomerase, alone or in conjunction with the activation of cell cycle drivers (e.g., CDK4) or inactivation of cell cycle inhibitors (such as p16). The combination is particularly crucial for muscle, as telomerase alone is insufficient to immortalize muscle precursors (135, 136). Because immortalization could impede complex cellular pathways, such as myogenesis, one challenge will be to ensure that engineered cell lines still differentiate robustly. Here, initial reports found that immortalized SCs are transcriptionally and myogenically similar to their parental cells (137, 138), but also that differentiation potential decreases with age (139, 140). Importantly, spontaneously immortalized cells are not considered genetically modified, a benefit from regulatory and consumer acceptance standpoints (1, 141), although genetic drift is a potential concern (142). Alternatively, novel precision tools, including CRISPR base and prime editing (143), allow the alteration of single nucleotides to knockout or overexpress particular factors (such as p16, CDK4, or telomerase) via alterations in their respective coding sequences or promoters (144). In many jurisdictions, these cells will also not be considered GMOs, paving the way for novel food applications in GMO-skeptical geographies.

Alongside immortalization, genetic engineering can help bypass various cell biological shortcomings for cultured meat applications. Countless patents have now been filed in this direction, often aimed at reducing production-associated costs or improving final product quality. Some projects have focused on reducing cellular dependence on exogenous supplementation via genetic modification, including the generation of self-sufficient cells expressing a combination of growth factors (including insulin-like growth factor, fibroblast growth factor, insulin, and/or albumin) and the tuning of metabolic pathways to decrease the frequency of medium exchange during culture, for example, via overexpression of glutamine synthase (see **Table 1**). As discussed previously (Section 6), proliferation at industrial scales requires culturing cells in large bioreactors. For these vessels, cells that grow in suspension or as aggregates are ideal, whereas adherent cells may require microcarriers, adding extra layers of complexity to bioprocess upscaling. For this reason, iPSCs are a popular choice, because these can be grown in suspension and later differentiated into the desired cell type. Generating iPSCs requires genetic reprogramming of somatic cells, whereby transcription factors are ectopically expressed to achieve a pluripotent cell state (145). Alternatively, trans-differentiation methods, whereby differentiated cells are directly converted into another cell type (146), could allow the formation of multiple tissue types from a single cell line, simplifying bioprocess design and increasing efficiency.

Unsurprisingly, numerous patents have also been filed relating to the ability to control and promote differentiation by modulating expression of key myogenic or adipogenic transcription factors in various cell types (**Table 1**). Introduction of an inducible cassette driving the expression of MYOD1 is the method of choice to improve muscle differentiation in most cases. Transcription factor expression can also be modulated in a transient fashion, e.g., via transfection methods, although these are currently not feasible for large-scale applications due to protocol complexity and high cost. Engineered cell lines that produce collagen or other ECM factors for large-scale applications are another instance where genetic modification might help reduce upscaling costs. Recently, expression of myoglobin sequences derived from extinct mammoth in cultured ovine cells generated widespread interest.

Genetic engineering can thus help solve the majority of challenges in upscaling cultured meat production, particularly with respect to robustness and cost reduction. A major hurdle, however, will be to gain acceptance of genetic engineering similar to that seen in biomedical research, where several gene and cell therapies [such as chimeric antigen receptor T cells (147)] are approved and used in patients. Although there is no evidence of DNA transfer from food into the human

Table 1 Genetic engineering of cell lines for cultured meat production

| Goal | Strategy | Example | Company/patent application |
|--|---|--|---|
| Life span extension/ immortalization | Cell-cycle inhibitor inactivation | CRISPR-based knockout of p16 | Upside Foods (US20220251550A1) |
| | Cell-cycle driver activation | CDK4 overexpression | Upside Foods (US20220251550A1) |
| | Telomerase activation | TERT overexpression | Upside Foods (US20220251550A1), GOOD Meat (US20220183316A1) |
| | Reprogramming | iPSCs | Meatable (US20190338309A1 ^a) |
| Controlled differentiation | Lineage and differentiation specification | MYOD1-driven skeletal muscle differentiation | Upside Foods (US20210171912A1), Meatable (US20190338309A1 ^a), WildType (US20200140821A1), Gourmey (WO202328114A1) |
| Proliferation in carrier-free/suspension cultures | Induction of anchorage-independent growth | iPSCs | Meatable (US20190338309A1 ^a), SCiFi Foods |
| Reduced dependence on medium composition | Medium recycling | Glutamine-synthetase-producing cells | Upside Foods (EP363877A4) |
| | Growth factor production | IGF-producing cells | Tufts University (WO2022104373A1), Upside Foods (EP363877A4) |
| | ECM protein production | Collagen-producing cells | Aleph Farms (WO2022043994A1) |

^aMeatable is licensing the technology described in this patent. Genetic engineering can be employed to immortalize cells or extend the life span of primary cells, control and improve differentiation, generate aggregate or suspension cultures, and reduce medium complexity.

Abbreviations: CDK4, cyclin-dependent kinase 4; CRISPR, clustered regularly interspaced short palindromic repeat; ECM, extracellular matrix; IGF, insulin-like growth factor; iPSC, induced pluripotent stem cell; MYOD1, myogenic differentiation 1; TERT, telomerase.

genome, the increased precision of modern gene editing tools might help to achieve this acceptance (148). Epigenetic editing and other techniques that can be used to engineer cells without genome alterations also offer promise in this respect (149). The US Food and Drug Administration's recent approval of Upside Foods' first product, including genetically modified chicken cells, offers a promising outlook for the future of genetic engineering for cultured meat (150).

8. CONCLUSION AND PERSPECTIVES

The development of cultured meat presents a promising solution for addressing major global challenges, including environmental sustainability, food security, and animal welfare. However, it is a complex and multifaceted problem that requires the solution of numerous interconnected challenges throughout the bioprocess, from cell isolation to tissue harvesting. To overcome these obstacles, a detailed understanding of the cell biology involved, along with its interface with other disciplines, such as tissue engineering, bioprocessing, and metabolomics, is essential (151). Although many remain, the pace of recent advances suggests that most scientific hurdles can be overcome through a combination of smart experimentation and empirical testing. Widespread adoption of cultured meat requires further development to achieve products that can compete with traditional meat in terms of price and taste, and achieving this goal will require significant focus on mimicry and cost optimization in the context of upscaled bioprocesses. Besides significant scientific progress, a host of other regulatory and commercial challenges must also be addressed. Overall, this enticing combination makes the field of cultured meat a compelling area of research at a crucial juncture.

DISCLOSURE STATEMENT

All authors were employees of Mosa Meat B.V., a company aiming to commercialize cultured meat, at the time of writing. All authors declare no other competing interests.

AUTHOR CONTRIBUTIONS

B.M., A.B., R.G.J.D., M.A.G., R.H., L.M., T.M., J.Pa., J.Pi., D.R., L.S., S.S., and J.E.F. researched and drafted the manuscript and designed the figures. B.M. referenced the final text. B.P.B. and J.E.F. edited the manuscript.

ACKNOWLEDGMENTS

We would like to thank Miguel Moura for his help assessing the patent landscape of cultured meat, Mark Post for general discussions related to cultured meat topics, and Laura Jackisch for her critical reading and comments on the manuscript. Funding was provided by Mosa Meat B.V.

LITERATURE CITED

1. Post MJ, Levenberg S, Kaplan DL, Genovese N, Fu J, et al. 2020. Scientific, sustainability and regulatory challenges of cultured meat. *Nat. Food* 1(7):403–15
2. Post MJ. 2012. Cultured meat from stem cells: challenges and prospects. *Meat Sci.* 92(3):297–301
3. Kupferschmidt K. 2013. Here it comes. . .the \$375,000 lab-grown beef burger. *Science*, Aug. 2. <https://www.science.org/content/article/here-it-comes-375000-lab-grown-beef-burger>
4. de Almeida Fuzeta M, de Matos Branco AD, Fernandes-Platzgummer A, da Silva CL, Cabral JMS. 2020. Addressing the manufacturing challenges of cell-based therapies. *Adv. Biochem. Eng. Biotechnol.* 171:225–78
5. Reiss J, Robertson S, Suzuki M. 2021. Cell sources for cultivated meat: applications and considerations throughout the production workflow. *Int. J. Mol. Sci.* 22(14):7513
6. Hackett CH, Fortier LA. 2011. Embryonic stem cells and iPS cells: sources and characteristics. *Vet. Clin. N. Am. Equine Pract.* 27(2):233–42
7. Zagury Y, Ianovici I, Landau S, Lavon N, Levenberg S. 2022. Engineered marble-like bovine fat tissue for cultured meat. *Commun. Biol.* 5:927
8. Bosnakovski D, Mizuno M, Kim G, Takagi S, Okumura M, Fujinaga T. 2005. Isolation and multilineage differentiation of bovine bone marrow mesenchymal stem cells. *Cell Tissue Res.* 319(2):243–53
9. Wei S, Du M, Jiang Z, Duarte MS, Fernyhough-Culver M, et al. 2013. Bovine dedifferentiated adipose tissue (DFAT) cells. *Adipocyte* 2(3):148–59
10. Aguiari P, Leo S, Zavan B, Vindigni V, Rimessi A, et al. 2008. High glucose induces adipogenic differentiation of muscle-derived stem cells. *PNAS* 105(4):1226–31
11. Uezumi A, Fukada S, Yamamoto N, Takeda S, Tsuchida K. 2010. Mesenchymal progenitors distinct from satellite cells contribute to ectopic fat cell formation in skeletal muscle. *Nat. Cell Biol.* 12(2):143–52
12. Dohmen RGJ, Hubalek S, Melke J, Messmer T, Cantoni F, et al. 2022. Muscle-derived fibro-adipogenic progenitor cells for production of cultured bovine adipose tissue. *npj Sci. Food* 6:6
13. Choudhury D, Tseng TW, Swartz E. 2020. The business of cultured meat. *Trends Biotechnol.* 38(6):573–77
14. Burton NM, Vierck J, Krabbenhoft L, Bryne K, Dodson MV. 2000. Methods for animal satellite cell culture under a variety of conditions. *Methods Cell Sci.* 22(1):51–61
15. Melzener L, Ding S, Hueber R, Messmer T, Zhou G, et al. 2022. Comparative analysis of cattle breeds as satellite cell donors for cultured beef. bioRxiv 2022.01.14.476358. <https://doi.org/10.1101/2022.01.14.476358>
16. Coles CA, Wadson J, Leyton CP, Siddell JP, Greenwood PL, et al. 2015. Proliferation rates of bovine primary muscle cells relate to liveweight and carcass weight in cattle. *PLOS ONE* 10(4):e0124468

17. Melzener L, Verzijden KE, Buijs AJ, Post MJ, Flack JE. 2021. Cultured beef: from small biopsy to substantial quantity. *J. Sci. Food Agric.* 101(1):7–14
18. Oberbauer E, Steffenhagen C, Wurzer C, Gabriel C, Redl H, Wolbank S. 2015. Enzymatic and non-enzymatic isolation systems for adipose tissue-derived cells: current state of the art. *Cell Regen.* 4:7
19. Ding S, Swennen GNM, Messmer T, Gagliardi M, Molin DGM, et al. 2018. Maintaining bovine satellite cells stemness through p38 pathway. *Sci. Rep.* 8(1):10808
20. Messmer T, Dohmen RGJ, Schaeken L, Melzener L, Hueber R, et al. 2023. Single-cell analysis of bovine muscle-derived cell types for cultured meat production. *Front. Nutr.* 10:1212196
21. Choi K-H, Yoon JW, Kim M, Lee HJ, Jeong J, et al. 2021. Muscle stem cell isolation and *in vitro* culture for meat production: a methodological review. *Compr. Rev. Food Sci. Food Saf.* 20(1):429–57
22. Bogliotti YS, Wu J, Vilarino M, Okamura D, Soto DA, et al. 2018. Efficient derivation of stable primed pluripotent embryonic stem cells from bovine blastocysts. *PNAS* 115(9):2090–95
23. Gao X, Nowak-Imialek M, Chen X, Chen D, Herrmann D, et al. 2019. Establishment of porcine and human expanded potential stem cells. *Nat. Cell Biol.* 21(6):687–99
24. Woods EJ, Thirumala S, Badhe-Buchanan SS, Clarke D, Mathew AJ. 2016. Off the shelf cellular therapeutics: factors to consider during cryopreservation and storage of human cells for clinical use. *Cytotherapy* 18(6):697–711
25. Sun C, Yue J, He N, Liu Y, Zhang X, Zhang Y. 2016. Fundamental principles of stem cell banking. In *Biobanking and Cryopreservation of Stem Cells*, ed. F Karimi-Busheri, M Weinfeld, pp. 31–45. Cham, Switz.: Springer Int. Publ.
26. Richards B, Cao S, Plavsic M, Pomponio R, Davies C, et al. 2014. Detection of adventitious agents using next-generation sequencing. *PDA J. Pharm. Sci. Technol.* 68(6):651–60
27. Nguyen QH, Lukowski SW, Chiu HS, Senabouth A, Bruxner TJC, et al. 2018. Single-cell RNA-seq of human induced pluripotent stem cells reveals cellular heterogeneity and cell state transitions between subpopulations. *Genome Res.* 28(7):1053–66
28. Bar-Nur O, Gerli MFM, Di Stefano B, Almada AE, Galvin A, et al. 2018. Direct reprogramming of mouse fibroblasts into functional skeletal muscle progenitors. *Stem Cell Rep.* 10(5):1505–21
29. Kolkman AM, van Essen A, Post MJ, Moutsatsou P. 2022. Development of a chemically defined medium for *in vitro* expansion of primary bovine satellite cells. *Front. Bioeng. Biotechnol.* 10:895289
30. Stout AJ, Mirliani AB, Rittenberg ML, Shub M, White EC, et al. 2022. Simple and effective serum-free medium for sustained expansion of bovine satellite cells for cell cultured meat. *Commun. Biol.* 5:466
31. Frank S, Zhang M, Schöler HR, Greber B. 2012. Small molecule-assisted, line-independent maintenance of human pluripotent stem cells in defined conditions. *PLOS ONE* 7(7):e41958
32. Moutsatsou P, Cruz H, Klevernic I, Kolkman A, van Essen A, Post M. 2021. *Serum-free medium for culturing a bovine progenitor cell*. WO Patent 2021/158103A1
33. Messmer T, Klevernic I, Furquim C, Ovchinnikova E, Dogan A, et al. 2022. A serum-free media formulation for cultured meat production supports bovine satellite cell differentiation in the absence of serum starvation. *Nat. Food* 3(1):74–85
34. Stout AJ, Rittenberg ML, Shub M, Saad MK, Mirliani AB, et al. 2022. A Beefy-R culture medium: replacing albumin with rapeseed protein isolates. *Biomaterials* 296:120092
35. Penton CM, Badarinarayana V, Prisco J, Powers E, Pincus M, et al. 2016. Laminin 521 maintains differentiation potential of mouse and human satellite cell-derived myoblasts during long-term culture expansion. *Skelet. Muscle* 6:44
36. Hayflick L, Moorhead PS. 1961. The serial cultivation of human diploid cell strains. *Exp. Cell Res.* 25(3):585–621
37. Di Micco R, Krizhanovsky V, Baker D, d’Adda di Fagagna F. 2021. Cellular senescence in ageing: from mechanisms to therapeutic opportunities. *Nat. Rev. Mol. Cell Biol.* 22(2):75–95
38. Ogrodnik M. 2021. Cellular aging beyond cellular senescence: markers of senescence prior to cell cycle arrest *in vitro* and *in vivo*. *Aging Cell* 20(4):e13338
39. Yi S, Lin K, Jiang T, Shao W, Huang C, et al. 2020. NMR-based metabolomic analysis of HUVEC cells during replicative senescence. *Aging* 12(4):3626–46
40. Hewitt G, Jurk D, Marques FDM, Correia-Melo C, Hardy T, et al. 2012. Telomeres are favoured targets of a persistent DNA damage response in ageing and stress-induced senescence. *Nat. Commun.* 3:708

41. Franzen J, Georgomanolis T, Selich A, Kuo C-C, Stöger R, et al. 2021. DNA methylation changes during long-term in vitro cell culture are caused by epigenetic drift. *Commun. Biol.* 4:598
42. Park S, Gagliardi M, Swennen G, Dogan A, Kim Y, et al. 2022. Effects of hypoxia on proliferation and differentiation in Belgian Blue and Hanwoo muscle satellite cells for the development of cultured meat. *Biomolecules* 12(6):838
43. Urbani L, Piccoli M, Franzin C, Pozzobon M, Coppi PD. 2012. Hypoxia increases mouse satellite cell clone proliferation maintaining both *in vitro* and *in vivo* heterogeneity and myogenic potential. *PLOS ONE* 7(11):e49860
44. García-Prat L, Martínez-Vicente M, Perdiguero E, Ortet L, Rodríguez-Ubrea J, et al. 2016. Autophagy maintains stemness by preventing senescence. *Nature* 529(7584):37–42
45. Turner DC, Gorski PP, Maasar MF, Seaborne RA, Baumert P, et al. 2020. DNA methylation across the genome in aged human skeletal muscle tissue and muscle-derived cells: the role of HOX genes and physical activity. *Sci. Rep.* 10:15360
46. Hernando-Herraez I, Evano B, Stubbs T, Commere P-H, Jan Bonder M, et al. 2019. Ageing affects DNA methylation drift and transcriptional cell-to-cell variability in mouse muscle stem cells. *Nat. Commun.* 10:4361
47. Le Grand F, Jones AE, Seale V, Scimè A, Rudnicki MA. 2009. Wnt7a activates the planar cell polarity pathway to drive the symmetric expansion of satellite stem cells. *Cell Stem Cell* 4(6):535–47
48. Bernet JD, Doles JD, Hall JK, Tanaka KK, Carter TA, Olwin BB. 2014. p38 MAPK signaling underlies a cell-autonomous loss of stem cell self-renewal in skeletal muscle of aged mice. *Nat. Med.* 20(3):265–71
49. Conboy IM, Conboy MJ, Smythe GM, Rando TA. 2003. Notch-mediated restoration of regenerative potential to aged muscle. *Science* 302(5650):1575–77
50. Giuliani G, Vumbaca S, Fuoco C, Gargioli C, Giorda E, et al. 2021. SCA-1 micro-heterogeneity in the fate decision of dystrophic fibro/adipogenic progenitors. *Cell Death Dis.* 12:122
51. Chakravarthy MV, Davis BS, Booth FW. 2000. IGF-I restores satellite cell proliferative potential in immobilized old skeletal muscle. *J. Appl. Physiol.* 89(4):1365–79
52. Eliazar S, Muncie JM, Christensen J, Sun X, D’Urso RS, et al. 2019. Wnt4 from the niche controls the mechano-properties and quiescent state of muscle stem cells. *Cell Stem Cell* 25(5):654–65.e4
53. Begue G, Douillard A, Galbes O, Rossano B, Vernus B, et al. 2013. Early activation of rat skeletal muscle IL-6/STAT1/STAT3 dependent gene expression in resistance exercise linked to hypertrophy. *PLOS ONE* 8(2):e57141
54. Chen W-J, Lin I-H, Lee C-W, Chen Y-F. 2021. Aged skeletal muscle retains the ability to remodel extracellular matrix for degradation of collagen deposition after muscle injury. *Int. J. Mol. Sci.* 22(4):2123
55. Lukjanenko L, Karaz S, Stuetsatz P, Gurriaran-Rodriguez U, Michaud J, et al. 2019. Aging disrupts muscle stem cell function by impairing matricellular WISP1 secretion from fibro-adipogenic progenitors. *Cell Stem Cell* 24(3):433–46.e7
56. Ansari S, Chen C, Xu X, Annabi N, Zadeh HH, et al. 2016. Muscle tissue engineering using gingival mesenchymal stem cells encapsulated in alginate hydrogels containing multiple growth factors. *Ann. Biomed. Eng.* 44(6):1908–20
57. McKellar DW, Walter LD, Song LT, Mantri M, Wang MFZ, et al. 2021. Large-scale integration of single-cell transcriptomic data captures transitional progenitor states in mouse skeletal muscle regeneration. *Commun. Biol.* 4:1280
58. Ono Y, Masuda S, Nam H-S, Benezra R, Miyagoe-Suzuki Y, Takeda S. 2012. Slow-dividing satellite cells retain long-term self-renewal ability in adult muscle. *J. Cell Sci.* 125(Pt. 5):1309–17
59. Jang Y-N, Baik EJ. 2013. JAK-STAT pathway and myogenic differentiation. *JAK-STAT* 2(2):e23282
60. Schmidt M, Schüler SC, Hüttner SS, von Eyss B, von Maltzahn J. 2019. Adult stem cells at work: regenerating skeletal muscle. *Cell. Mol. Life Sci.* 76(13):2559–70
61. Pirkmajer S, Chibalin AV. 2011. Serum starvation: *caveat emptor*. *Am. J. Physiol. Cell Physiol.* 301(2):C272–79
62. Luque E, Peña J, Martin P, Jimena I, Vaamonde R. 1995. Capillary supply during development of individual regenerating muscle fibers. *Anat. Histol. Embryol.* 24(2):87–89
63. Powell DJ, McFarland DC, Cowieson AJ, Muir WI, Velleman SG. 2013. The effect of nutritional status on myogenic satellite cell proliferation and differentiation. *Poult. Sci.* 92(8):2163–73

64. Eigler T, Zarfati G, Amzallag E, Sinha S, Segev N, et al. 2021. ERK1/2 inhibition promotes robust myotube growth via CaMKII activation resulting in myoblast-to-myotube fusion. *Dev. Cell* 56(24):3349–63.e6
65. Jiwlawat N, Lynch E, Jeffrey J, Van Dyke JM, Suzuki M. 2018. Current progress and challenges for skeletal muscle differentiation from human pluripotent stem cells using transgene-free approaches. *Stem Cells Int.* 2018:e6241681
66. Yoshida N, Yoshida S, Koishi K, Masuda K, Nabeshima Y. 1998. Cell heterogeneity upon myogenic differentiation: down-regulation of MyoD and Myf-5 generates ‘reserve cells.’ *J. Cell Sci.* 111(6):769–79
67. Péault B, Rudnicki M, Torrente Y, Cossu G, Tremblay JP, et al. 2007. Stem and progenitor cells in skeletal muscle development, maintenance, and therapy. *Mol. Ther. J. Am. Soc. Gene Ther.* 15(5):867–77
68. Kitzmann M, Bonnieu A, Duret C, Vernus B, Barro M, et al. 2006. Inhibition of Notch signaling induces myotube hypertrophy by recruiting a subpopulation of reserve cells. *J. Cell. Physiol.* 208(3):538–48
69. Flucher BE, Andrews SB, Daniels MP. 1994. Molecular organization of transverse tubule/sarcoplasmic reticulum junctions during development of excitation-contraction coupling in skeletal muscle. *Mol. Biol. Cell* 5(10):1105–18
70. Yamamoto DL, Csikasz RI, Li Y, Sharma G, Hjort K, et al. 2008. Myotube formation on micro-patterned glass: intracellular organization and protein distribution in C2C12 skeletal muscle cells. *J. Histochem. Cytochem.* 56(10):881–92
71. Selvaraj S, Mondragon-Gonzalez R, Xu B, Magli A, Kim H, et al. 2019. Screening identifies small molecules that enhance the maturation of human pluripotent stem cell-derived myotubes. *eLife* 8:e47970
72. Font-i-Furnols M, Guerrero L. 2014. Consumer preference, behavior and perception about meat and meat products: an overview. *Meat Sci.* 98(3):361–71
73. Sarjeant K, Stephens JM. 2012. Adipogenesis. *Cold Spring Harb. Perspect. Biol.* 4(9):a008417
74. Ghaben AL, Scherer PE. 2019. Adipogenesis and metabolic health. *Nat. Rev. Mol. Cell Biol.* 20(4):242–58
75. Sakers A, De Siqueira MK, Seale P, Villanueva CJ. 2022. Adipose-tissue plasticity in health and disease. *Cell* 185(3):419–46
76. Dufau J, Shen JX, Couchet M, De Castro Barbosa T, Mejhert N, et al. 2021. In vitro and ex vivo models of adipocytes. *Am. J. Physiol. Cell Physiol.* 320(5):C822–41
77. Mitić R, Cantoni F, Börlin CS, Post MJ, Jackisch L. 2023. A simplified and defined serum-free medium for cultivating fat across species. *iScience* 26(1):105822
78. Vernon RG. 1981. Lipid metabolism in the adipose tissue of ruminant animals. In *Lipid Metabolism in Ruminant Animals*, ed. WW Christie, pp. 279–362. Oxford, UK: Pergamon
79. Bou M, Todorčević M, Torgersen J, Škugor S, Navarro I, Ruyter B. 2016. *De novo* lipogenesis in Atlantic salmon adipocytes. *Biochim. Biophys. Acta* 1860(1, Part A):86–96
80. Cheng B, Wu M, Xu S, Zhang X, Wang Y, et al. 2016. Cocktail supplement with rosiglitazone: a novel inducer for chicken preadipocyte differentiation *in vitro*. *Biosci. Rep.* 36(6):e00401
81. Guo W, Pirtskhalava T, Tchkonina T, Xie W, Thomou T, et al. 2007. Aging results in paradoxical susceptibility of fat cell progenitors to lipotoxicity. *Am. J. Physiol. Endocrinol. Metab.* 292(4):E1041–51
82. Ma YN, Wang B, Wang ZX, Gomez NA, Zhu MJ, Du M. 2018. Three-dimensional spheroid culture of adipose stromal vascular cells for studying adipogenesis in beef cattle. *Animal* 12(10):2123–29
83. Wu B, Wei F, Xu S, Xie Y, Lv X, et al. 2021. Mass spectrometry-based lipidomics as a powerful platform in foodomics research. *Trends Food Sci. Technol.* 107:358–76
84. Wells-Cembrano K, Sala-Jarque J, del Rio JA. 2022. Development of a simple and versatile *in vitro* method for production, stimulation, and analysis of bioengineered muscle. *PLOS ONE* 17(8):e0272610
85. Ben-Arye T, Levenberg S. 2019. Tissue engineering for clean meat production. *Front. Sustain. Food Syst.* 3:46
86. Bomkamp C, Skaalure SC, Fernando GF, Ben-Arye T, Swartz EW, Specht EA. 2022. Scaffolding biomaterials for 3D cultivated meat: prospects and challenges. *Adv. Sci.* 9(3):2102908
87. Ben-Arye T, Shandalov Y, Ben-Shaul S, Landau S, Zagury Y, et al. 2020. Textured soy protein scaffolds enable the generation of three-dimensional bovine skeletal muscle tissue for cell-based meat. *Nat. Food* 1(4):210–20
88. Chaudhuri O, Gu L, Klumpers D, Darnell M, Bencherif SA, et al. 2016. Hydrogels with tunable stress relaxation regulate stem cell fate and activity. *Nat. Mater.* 15(3):326–34

89. Sahoo DR, Biswal T. 2021. Alginate and its application to tissue engineering. *SN Appl. Sci.* 3:30
90. Sandvig I, Karstensen K, Rokstad AM, Aachmann FL, Formo K, et al. 2015. RGD-peptide modified alginate by a chemoenzymatic strategy for tissue engineering applications. *J. Biomed. Mater. Res. A* 103(3):896–906
91. Bidarra SJ, Barrias CC, Fonseca KB, Barbosa MA, Soares RA, Granja PL. 2011. Injectable *in situ* crosslinkable RGD-modified alginate matrix for endothelial cells delivery. *Biomaterials* 32(31):7897–904
92. Pasitka L, Cohen M, Ehrlich A, Gildor B, Reuveni E, et al. 2022. Spontaneous immortalization of chicken fibroblasts generates stable, high-yield cell lines for serum-free production of cultured meat. *Nat. Food* 4(1):35–50
93. Iberite F, Gruppioni E, Ricotti L. 2022. Skeletal muscle differentiation of human iPSCs meets bioengineering strategies: perspectives and challenges. *npj Regen. Med.* 7:23
94. Pedrotty DM, Koh J, Davis BH, Taylor DA, Wolf P, Niklason LE. 2005. Engineering skeletal myoblasts: roles of three-dimensional culture and electrical stimulation. *Am. J. Physiol. Heart Circ. Physiol.* 288(4):H1620–26
95. Afshar Bakooshli M, Lippmann ES, Mulcahy B, Iyer N, Nguyen CT, et al. 2019. A 3D culture model of innervated human skeletal muscle enables studies of the adult neuromuscular junction. *eLife* 8:e44530
96. Fish KD, Rubio NR, Stout AJ, Yuen JSK, Kaplan DL. 2020. Prospects and challenges for cell-cultured fat as a novel food ingredient. *Trends Food Sci. Technol.* 98:53–67
97. Yuen JSK Jr., Stout AJ, Kawecki NS, Letcher SM, Theodossiou SK, et al. 2022. Perspectives on scaling production of adipose tissue for food applications. *Biomaterials* 280:121273
98. Klingelhut AJ, Gourronc FA, Chaly A, Wadkins DA, Burand AJ, et al. 2018. Scaffold-free generation of uniform adipose spheroids for metabolism research and drug discovery. *Sci. Rep.* 8:523
99. Yuen JSK Jr., Saad MK, Xiang N, Barrick BM, DiCindio H, et al. 2023. Aggregating in vitro-grown adipocytes to produce macroscale cell-cultured fat tissue with tunable lipid compositions for food applications. *eLife* 12:e82120
100. Hasturk O, Kaplan DL. 2019. Cell armor for protection against environmental stress: advances, challenges and applications in micro- and nanoencapsulation of mammalian cells. *Acta Biomater.* 95:3–31
101. Chandler EM, Berglund CM, Lee JS, Polacheck WJ, Gleghorn JP, et al. 2011. Stiffness of photocrosslinked RGD-alginate gels regulates adipose progenitor cell behavior. *Biotechnol. Bioeng.* 108(7):1683–92
102. Giordani L, He GJ, Negroni E, Sakai H, Law JYC, et al. 2019. High-dimensional single-cell cartography reveals novel skeletal muscle-resident cell populations. *Mol. Cell* 74(3):609–21.e6
103. Joe AWB, Yi L, Natarajan A, Le Grand F, So L, et al. 2010. Muscle injury activates resident fibro/adipogenic progenitors that facilitate myogenesis. *Nat. Cell Biol.* 12(2):153–63
104. Pellegata AF, Tedeschi AM, De Coppi P. 2018. Whole organ tissue vascularization: engineering the tree to develop the fruits. *Front. Bioeng. Biotechnol.* 6:56
105. Li CH, Yang IH, Ke CJ, Chi CY, Matahum J, et al. 2022. The production of fat-containing cultured meat by stacking aligned muscle layers and adipose layers formed from gelatin-soymilk scaffold. *Front. Bioeng. Biotechnol.* 10:875069
106. Kang DH, Louis F, Liu H, Shimoda H, Nishiyama Y, et al. 2021. Engineered whole cut meat-like tissue by the assembly of cell fibers using tendon-gel integrated bioprinting. *Nat. Commun.* 12:5059
107. Shyh-Chang N, Ng HH. 2017. The metabolic programming of stem cells. *Genes Dev.* 31(4):336–46
108. Furuichi Y, Kawabata Y, Aoki M, Mita Y, Fujii NL, Manabe Y. 2021. Excess glucose impedes the proliferation of skeletal muscle satellite cells under adherent culture conditions. *Front. Cell Dev. Biol.* 9:640399
109. Leprivier G, Rotblat B. 2020. How does mTOR sense glucose starvation? AMPK is the usual suspect. *Cell Death Discov.* 6:27
110. Dreesen IAJ, Fussenegger M. 2011. Ectopic expression of human mTOR increases viability, robustness, cell size, proliferation, and antibody production of Chinese hamster ovary cells. *Biotechnol. Bioeng.* 108(4):853–66
111. Brüggenthies JB, Fiore A, Russier M, Bitsina C, Brötzmann J, et al. 2022. A cell-based chemical-genetic screen for amino acid stress response inhibitors reveals torins reverse stress kinase GCN2 signaling. *J. Biol. Chem.* 298(12):102629

112. Zagari F, Jordan M, Stettler M, Broly H, Wurm FM. 2013. Lactate metabolism shift in CHO cell culture: the role of mitochondrial oxidative activity. *New Biotechnol.* 30(2):238–45
113. Schneider M. 1996. The importance of ammonia in mammalian cell culture. *J. Biotechnol.* 46(3):161–85
114. Lao MS, Toth D. 1997. Effects of ammonium and lactate on growth and metabolism of a recombinant Chinese hamster ovary cell culture. *Biotechnol. Prog.* 13(5):688–91
115. Schop D, Janssen FW, van Rijn LDS, Fernandes H, Bloem RM, et al. 2009. Growth, metabolism, and growth inhibitors of mesenchymal stem cells. *Tissue Eng. A* 15(8):1877–86
116. Pereira S, Kildegaard HF, Andersen MR. 2018. Impact of CHO metabolism on cell growth and protein production: an overview of toxic and inhibiting metabolites and nutrients. *Biotechnol. J.* 13(3):1700499
117. Hubalek S, Post MJ, Moutsatsou P. 2022. Towards resource-efficient and cost-efficient cultured meat. *Curr. Opin. Food Sci.* 47:100885
118. Hassell T, Butler M. 1990. Adaptation to non-ammoniogenic medium and selective substrate feeding lead to enhanced yields in animal cell cultures. *J. Cell Sci.* 96(3):501–8
119. Chang RS, Geyer RP. 1957. Propagation of conjunctival and HeLa cells in various carbohydrate media. *Exp. Biol. Med.* 96(2):336–40
120. Ha TK, Lee GM. 2014. Effect of glutamine substitution by TCA cycle intermediates on the production and sialylation of Fc-fusion protein in Chinese hamster ovary cell culture. *J. Biotechnol.* 180:23–29
121. Riese U, Lütkemeyer D, Heidemann R, Büntemeyer H, Lehmann J. 1994. Re-use of spent cell culture medium in pilot scale and rapid preparative purification with membrane chromatography. *J. Biotechnol.* 34(3):247–57
122. Nath SC, Nagamori E, Horie M, Kino-oka M. 2017. Culture medium refinement by dialysis for the expansion of human induced pluripotent stem cells in suspension culture. *Bioprocess Biosyst. Eng.* 40:123–31
123. Kempken R, Büntemeyer H, Lehmann J. 1991. The medium cycle bioreactor (MCB): monoclonal antibody production in a new economic production system. *Cytotechnology* 7(2):63–74
124. Cherry RS, Papoutsakis ET. 1986. Hydrodynamic effects on cells in agitated tissue culture reactors. *Bioprocess Eng.* 1(1):29–41
125. Chisti Y. 2001. Hydrodynamic damage to animal cells. *Crit. Rev. Biotechnol.* 21(2):67–110
126. Mollet M, Ma N, Zhao Y, Brodkey R, Taticek R, Chalmers JJ. 2004. Bioprocess equipment: characterization of energy dissipation rate and its potential to damage cells. *Biotechnol. Prog.* 20(5):1437–48
127. Dimmeler S, Hermann C, Galle J, Zeiher AM. 1999. Upregulation of superoxide dismutase and nitric oxide synthase mediates the apoptosis-suppressive effects of shear stress on endothelial cells. *Arterioscler. Thromb. Vasc. Biol.* 19(3):656–64
128. Juffer P, Bakker AD, Klein-Nulend J, Jaspers RT. 2014. Mechanical loading by fluid shear stress of myotube glycocalyx stimulates growth factor expression and nitric oxide production. *Cell Biochem. Biophys.* 69(3):411–19
129. Reichenbach M, Mendez P-L, da Silva Madaleno C, Ugorets V, Rikeit P, et al. 2021. Differential impact of fluid shear stress and YAP/TAZ on BMP/TGF- β induced osteogenic target genes. *Adv. Biol.* 5(2):2000051
130. Panciera T, Azzolin L, Fujimura A, Di Biagio D, Frasson C, et al. 2016. Induction of expandable tissue-specific stem/progenitor cells through transient expression of YAP/TAZ. *Cell Stem Cell* 19(6):725–37
131. Aihara A, Iwawaki T, Abe-Fukasawa N, Otsuka K, Saruhashi K, et al. 2022. Small molecule LATS kinase inhibitors block the Hippo signaling pathway and promote cell growth under 3D culture conditions. *J. Biol. Chem.* 298(4):101779
132. Matthews HK, Bertoli C, de Bruin RAM. 2022. Cell cycle control in cancer. *Nat. Rev. Mol. Cell Biol.* 23(1):74–88
133. d'Adda di Fagagna F, Reaper PM, Clay-Farrace L, Fiegler H, Carr P, et al. 2003. A DNA damage checkpoint response in telomere-initiated senescence. *Nature* 426(6963):194–98
134. Saad MK, Yuen JSK, Joyce CM, Li X, Lim T, et al. 2023. Continuous fish muscle cell line with capacity for myogenic and adipogenic-like phenotypes. *Sci. Rep.* 13:5098

135. Zhu CH, Mouly V, Cooper RN, Mamchaoui K, Bigot A, et al. 2007. Cellular senescence in human myoblasts is overcome by human telomerase reverse transcriptase and cyclin-dependent kinase 4: consequences in aging muscle and therapeutic strategies for muscular dystrophies. *Aging Cell* 6(4):515–23
136. Di Donna S, Mamchaoui K, Cooper RN, Seigneurin-Venin S, Tremblay J, et al. 2003. Telomerase can extend the proliferative capacity of human myoblasts, but does not lead to their immortalization. *Mol. Cancer Res.* 1(9):643–53
137. Thorley M, Duguez S, Mazza EMC, Valsoni S, Bigot A, et al. 2016. Skeletal muscle characteristics are preserved in hTERT/cdk4 human myogenic cell lines. *Skelet. Muscle* 6:43
138. Shiomi K, Kiyono T, Okamura K, Uezumi M, Goto Y, et al. 2011. CDK4 and cyclin D1 allow human myogenic cells to recapture growth property without compromising differentiation potential. *Gene Ther.* 18(9):857–66
139. Stadler G, Chen JCJ, Wagner K, Robin JD, Shay JW, et al. 2011. Establishment of clonal myogenic cell lines from severely affected dystrophic muscles—CDK4 maintains the myogenic population. *Skelet. Muscle* 1:12
140. Stout AJ, Arnett MJ, Chai KM, Guo T, Liao L, et al. 2022. Immortalized bovine satellite cells for cultured meat applications. *ACS Synth. Biol.* 12(5):1567–73
141. Hingston ST, Noseworthy TJ. 2018. Why consumers don't see the benefits of genetically modified foods, and what marketers can do about it. *J. Mark.* 82(5):125–40
142. Ben-David U, Siranosian B, Ha G, Tang H, Oren Y, et al. 2018. Genetic and transcriptional evolution alters cancer cell line drug response. *Nature* 560(7718):325–30
143. Anzalone AV, Koblan LW, Liu DR. 2020. Genome editing with CRISPR-Cas nucleases, base editors, transposases and prime editors. *Nat. Biotechnol.* 38(7):824–44
144. Bell RJA, Rube HT, Xavier-Magalhães A, Costa BM, Mancini A, et al. 2016. Understanding TERT promoter mutations: a common path to immortality. *Mol. Cancer Res.* 14(4):315–23
145. Takahashi K, Yamanaka S. 2006. Induction of pluripotent stem cells from mouse embryonic and adult fibroblast cultures by defined factors. *Cell* 126(4):663–76
146. Xu B, Siehr A, Shen W. 2020. Functional skeletal muscle constructs from transdifferentiated human fibroblasts. *Sci. Rep.* 10(1):22047
147. Sengsayadeth S, Savani BN, Oluwole O, Dholaria B. 2022. Overview of approved CAR-T therapies, ongoing clinical trials, and its impact on clinical practice. *eJHaem* 3(Suppl. 1):6–10
148. Nawaz MA, Mesnage R, Tsatsakis AM, Gfolokhvast KS, Yang SH, et al. 2019. Addressing concerns over the fate of DNA derived from genetically modified food in the human body: a review. *Food Chem. Toxicol.* 124:423–30
149. Nakamura M, Gao Y, Dominguez AA, Qi LS. 2021. CRISPR technologies for precise epigenome editing. *Nat. Cell Biol.* 23(1):11–22
150. US Food Drug Adm. 2022. *Cell Culture Consultation 000002, cultured Gallus gallus cell material*. Sci. Memo, Cent. Food Saf. Appl. Nutr., College Park, MD. <https://www.fda.gov/media/163261/download>
151. Stout AJ, Kaplan DL, Flack JE. 2023. Cultured meat: creative solutions for a cell biological problem. *Trends Cell Biol.* 33(1):1–4

Contents

| | |
|--|-----|
| How Fish Population Genomics Can Promote Sustainable Fisheries: A Road Map <i>Leif Andersson, Dorte Bekkevold, Florian Berg, Edward D. Farrell, Sabine Felkel, Mafalda S. Ferreira, Angela P. Fuentes-Pardo, Jake Goodall, and Mats Pettersson</i> | 1 |
| Genetics and Evolution of Bird Migration <i>Zhongru Gu, Andrew Dixon, and Xiangjiang Zhan</i> | 21 |
| How Can Genomics Help or Hinder Wildlife Conservation? <i>Thomas L. Schmidt, Joshua A. Thia, and Ary A. Hoffmann</i> | 45 |
| Conservation Genomics and Metagenomics of Giant and Red Pandas in the Wild <i>Yisi Hu, Yibo Hu, Wenliang Zhou, and Fuwen Wei</i> | 69 |
| Cloning for the Twenty-First Century and Its Place in Endangered Species Conservation <i>Veronica B. Cowl, Pierre Comizzoli, Ruth Appeltant, Rhiannon L. Bolton, Robert K. Browne, William V. Holt, Linda M. Penfold, Aleona Swegen, Susan L. Walker, and Suzannah A. Williams</i> | 91 |
| Advances in Managing Chytridiomycosis for Australian Frogs: <i>Gradarius Firmus Victoria</i> <i>Lee Berger, Lee F. Skerratt, Tiffany A. Kosch, Laura A. Brannelly, Rebecca J. Webb, and Anthony W. Waddle</i> | 113 |
| The Distinctive Biology and Characteristics of the Bare-Nosed Wombat (<i>Vombatus ursinus</i>) <i>Scott Carver, Georgia L. Stannard, and Alynn M. Martin</i> | 135 |
| Illuminating the Mysteries of the Smallest Birds: Hummingbird Population Health, Disease Ecology, and Genomics <i>Holly B. Ernest, Lisa A. Tell, Christine A. Bishop, Ana M. González, and Emily R. Lumsdaine</i> | 161 |
| Biology and Cultural Importance of the Narwhal <i>Martin T. Nweeia</i> | 187 |

| | |
|--|-----|
| Breeding and Selecting Corals Resilient to Global Warming <i>K.M. Quigley</i> | 209 |
| Diversity and Convergence of Sex-Determination Mechanisms in Teleost Fish <i>Jun Kitano, Satoshi Ansai, Yusuke Takehana, and Yoji Yamamoto</i> | 233 |
| Adipose Tissue Inflammation: Linking Physiological Stressors to Disease Susceptibility <i>Barry J. Bradford and G. Andres Contreras</i> | 261 |
| Synthetic Communities of Gut Microbes for Basic Research and Translational Approaches in Animal Health and Nutrition <i>Susan A.V. Jennings and Thomas Clavel</i> | 283 |
| Sperm in the Mammalian Female Reproductive Tract: Surfing Through the Tract to Try to Beat the Odds <i>David J. Miller</i> | 301 |
| Recent Advances in Enteric Methane Mitigation and the Long Road to Sustainable Ruminant Production <i>Simon Roques, Gonzalo Martinez-Fernandez, Yulixis Ramayo-Caldas, Milka Popova, Stuart Denman, Sarah J. Meale, and Diego P. Morgavi</i> | 321 |
| Advances and Challenges in Cell Biology for Cultured Meat <i>Beatriz Martins, Arthur Bister, Richard G.J. Dohmen, Maria Ana Gouveia, Rui Hueber, Lea Melzener, Tobias Messmer, Joanna Papadopoulou, Joana Pimenta, Dhruv Raina, Lieke Schaecken, Sara Shirley, Benjamin P. Bouchet, and Joshua E. Flack</i> | 345 |
| Advances in Organ and Tissue Xenotransplantation <i>Asgar Ali, Elisabeth Kemter, and Eckhard Wolf</i> | 369 |
| Advocating for Generalizability: Accepting Inherent Variability in Translation of Animal Research Outcomes <i>F.C. Hankenson, E.M. Prager, and B.R. Berridge</i> | 391 |

Errata

An online log of corrections to *Annual Review of Animal Biosciences* articles may be found at <http://www.annualreviews.org/errata/animal>