

## 2006 European regional innovation scoreboard

### Citation for published version (APA):

Hollanders, H. J. G. M. (2006). *2006 European regional innovation scoreboard*. European Commission.

### Document status and date:

Published: 01/01/2006

### Document Version:

Publisher's PDF, also known as Version of record

### Please check the document version of this publication:

- A submitted manuscript is the version of the article upon submission and before peer-review. There can be important differences between the submitted version and the official published version of record. People interested in the research are advised to contact the author for the final version of the publication, or visit the DOI to the publisher's website.
- The final author version and the galley proof are versions of the publication after peer review.
- The final published version features the final layout of the paper including the volume, issue and page numbers.

[Link to publication](#)

### General rights

Copyright and moral rights for the publications made accessible in the public portal are retained by the authors and/or other copyright owners and it is a condition of accessing publications that users recognise and abide by the legal requirements associated with these rights.

- Users may download and print one copy of any publication from the public portal for the purpose of private study or research.
- You may not further distribute the material or use it for any profit-making activity or commercial gain
- You may freely distribute the URL identifying the publication in the public portal.

If the publication is distributed under the terms of Article 25fa of the Dutch Copyright Act, indicated by the "Taverne" license above, please follow below link for the End User Agreement:

[www.umlib.nl/taverne-license](http://www.umlib.nl/taverne-license)

### Take down policy

If you believe that this document breaches copyright please contact us at:

[repository@maastrichtuniversity.nl](mailto:repository@maastrichtuniversity.nl)

providing details and we will investigate your claim.



**TrendChart**  
Innovation Policy in Europe

**European Trend Chart on Innovation**

# **2006 EUROPEAN REGIONAL INNOVATION SCOREBOARD (2006 RIS)**

This report was prepared by

Hugo Hollanders

(MERIT – Maastricht Economic and social Research  
and training centre on Innovation and Technology)

The information contained in this report has not been validated in detail  
by either the Member States or the European Commission.

November 15, 2006  
(revised January 4, 2007)

## Table of contents

Table of contents .....	2
1. Introduction .....	3
2. Indicators and data availability.....	5
3. Methodology .....	6
4. Regional innovation performance .....	8
5. Changes in methodology .....	10
6. Economic performance.....	12
7. Innovation performance over time .....	13
8. Future updates of the RIS .....	14
Annex 1. The contribution of each indicator to the RRSII.....	16
Annex 2. Changes in methodology: impact on regions' ranks.....	24
Annex 3. RIS 2006 data .....	29
Annex 4. RIS 2006 composite indicator scores.....	37

## 1. Introduction

In 2002 and 2003 under the European Commission's "European Trend Chart on Innovation" (Enterprise Directorate-General) two Regional Innovation Scoreboards have been published<sup>1</sup>. Both reports focused on the regional innovation performance of the EU15 member states using a more limited number of indicators as compared to the *European Innovation Scoreboard*. This report provides an update of both reports by using more recent data and provides an extension by also including the regions of the new member states. As compared to the 2003 RIS, the number of regions increases from 173 to 208 but the number of indicators decreases from 13 to 7. Regional CIS-2 data have not been used as these data are not available for half of the countries and are also becoming too old.

**Table 1. A comparison of the 2002 and 2003 RIS and the 2006 RIS**

	2002 RIS	2003 RIS	2006 RIS	Source (Eurostat)
Countries	EU15	EU15	EU25	
Number of regions	148	173	208	
Number of indicators	7	13	7	
Population with tertiary education (% of 25 – 64 years age class)	Yes: 2001 data or most recent	Yes: 2002 data or most recent	No	Labour Force Survey
Human Resources in Science and Technology – Core (% of population)	No	No	Yes: 2004 data	Labour Force Survey
Participation in life-long learning (% of 25 – 64 years age class)	Yes: 2001 data or most recent	Yes: 2002 data or most recent	Yes: 2004 data	Labour Force Survey
Employment in medium-high and high-tech manufacturing (% of total workforce)	Yes: 2000 data or most recent	Yes: 2002 data or most recent	Yes: 2004 data	Labour Force Survey
Employment in high-tech services (% of total workforce)	Yes: 2000 data or most recent	Yes: 2002 data or most recent	Yes: 2004 data	Labour Force Survey
Public R&D expenditures (GERD – BERD) (% of GDP)	Yes: 1999 data or most recent	Yes: 2001 data or most recent	Yes: 2002 data or most recent	R&D statistics
Business expenditures on R&D (BERD) (% of GDP)	Yes: 1999 data or most recent	Yes: 2001 data or most recent	Yes: 2002 data or most recent	R&D statistics
EPO high-tech patent applications (per million population)	Yes: 1999 data or most recent	Yes: 2001 data or most recent	No	Patent statistics
EPO patent applications (per million population)	No	Yes: 2001 data or most recent	Yes: 2002 data	Patent statistics
Share of innovative enterprises (% of all manufacturing enterprises)	No	Yes: 1996 data	No	2 <sup>nd</sup> Community Innovation Survey
Share of innovative enterprises (% of all services enterprises)	No	Yes: 1996 data	No	2 <sup>nd</sup> Community Innovation Survey
Innovation expenditures (% of all turnover in manufacturing)	No	Yes: 1996 data	No	2 <sup>nd</sup> Community Innovation Survey
Innovation expenditures (% of all turnover in services)	No	Yes: 1996 data	No	2 <sup>nd</sup> Community Innovation Survey
Sales of 'new to the firm but not new to the market' products (% of all turnover in manufacturing)	No	Yes: 1996 data	No	2 <sup>nd</sup> Community Innovation Survey

<sup>1</sup> The 2002 report is available from [http://trendchart.cordis.lu/scoreboards/Scoreboard2002/download\\_area.cfm](http://trendchart.cordis.lu/scoreboards/Scoreboard2002/download_area.cfm)  
The 2003 report is available from [http://trendchart.cordis.lu/scoreboards/scoreboard2003/scoreboard\\_papers.cfm](http://trendchart.cordis.lu/scoreboards/scoreboard2003/scoreboard_papers.cfm)

The NUTS classification<sup>2</sup> has been used for determining the level of regional level analysis. The use of the NUTS classification introduces several problems for analysing the innovative capabilities of regions. First, there are large discrepancies in the size (in terms of population and economic output) of regions, both within and between countries. This can create anomalies, such as a small region doing comparatively well on an indicator because a single innovative firm or public research institute is based there. Second, a few countries have very few regions. This places these countries at a serious disadvantage in analyses of leading regions. A country such as France with 23 regions has a higher probability of showing up with a leading region for one or more indicators than a country such as Belgium with only 3 regions.

**Table 2. Indicator definitions**

Indicator	Numerator	Denominator	Interpretation
Human Resources in Science and Technology – Core (% of population)	Number of persons who have successfully completed education at the third level in a S&T field of study and who are employed in a S&T occupation	Total population as defined in the European System of Accounts (ESA 1995)	A rapidly changing economic environment and a growing emphasis on the knowledge-based economy have seen mounting interest in the role and measurement of skills. Meeting the demands of the new economy is a fundamental policy issue and has a strong bearing on the social, environmental and economic well-being of the population. Data on Human Resources in Science and Technology (HRST) can improve our understanding of both the demand for, and supply of, science and technology personnel — an important facet of the new economy.
Participation in life-long learning per 100 population aged 25-64)	Number of persons involved in life-long learning	Reference population is all age classes between 25 and 64 years inclusive	A central characteristic of a knowledge economy is continual technical development and innovation. Individuals need to continually learn new ideas and skills or to participate in life-long learning. All types of learning of valuable, since it prepares people for “learning to learn”. The ability to learn can then be applied to new tasks with social and economic benefits.
Public R&D expenditures (% of GDP)	Difference between GERD (Gross domestic expenditure on R&D) and BERD (Business enterprise expenditure on R&D)	Gross domestic product as defined in the European System of Accounts (ESA 1995)	R&D expenditure represents one of the major drivers of economic growth in a knowledge-based economy. As such, trends in the R&D expenditure indicator provide key indications of the future competitiveness and wealth of the EU. Research and development spending is essential for making the transition to a knowledge-based economy as well as for improving production technologies and stimulating growth.
Business R&D expenditures (% of GDP)	All R&D expenditures in the business sector (BERD)	Gross domestic product as defined in the European System of Accounts (ESA 1995)	The indicator captures the formal creation of new knowledge within firms. It is particularly important in the science-based sector (pharmaceuticals, chemicals and some areas of electronics) where most new knowledge is created in or near R&D laboratories.

<sup>2</sup> <http://europa.eu.int/comm/eurostat/ramon/nuts/>

Indicator	Numerator	Denominator	Interpretation
Employment in medium-high and high-tech manufacturing (% of total workforce)	Number of employed persons in the medium-high and high-tech manufacturing sectors. These include chemicals (NACE24), machinery (NACE29), office equipment (NACE30), electrical equipment (NACE31), telecommunications and related equipment (NACE32), precision instruments (NACE33), automobiles (NACE34) and aerospace and other transport (NACE35)	Total workforce includes all manufacturing and service sectors	The share of employment in medium-high and high technology manufacturing sectors is an indicator of the manufacturing economy that is based on continual innovation through creative, inventive activity. The use of total employment gives a better indicator than using the share of manufacturing employment alone, since the latter will be affected by the hollowing out of manufacturing in some countries.
Employment in high-tech services (% of total workforce)	Number of employed persons in the high-tech services sectors. These include post and telecommunications (NACE64), information technology including software development (NACE72) and R&D services (NACE73)	Total workforce includes all manufacturing and service sectors.	The high technology services both provide services directly to consumers, such as telecommunications, and provide inputs to the innovative activities of other firms in all sectors of the economy. The latter can increase productivity throughout the economy and support the diffusion of a range of innovations, in particular those based on ICT.
EPO patents per million population	Number of patents applied for at the European Patent Office (EPO), by year of filing. The national distribution of the patent applications is assigned according to the address of the inventor	Total population as defined in the European System of Accounts (ESA 1995)	The capacity of firms to develop new products will determine their competitive advantage. One indicator of the rate of new product innovation is the number of patents. This indicator measures the number of patent applications at the European Patent Office.

## 2. Indicators and data availability

Regional data are available for 7 of the 26 2005 EIS indicators. Indicator definitions and an interpretation of each of the indicators are given in Table 2. No regional data are available for the following EIS indicators: Broadband penetration rate; Early stage venture capital; ICT expenditures; Exports of high-tech products; USPTO patents; Triad patents; Community trademarks and Community designs. Regional data from the 3<sup>rd</sup> edition of the Community Innovation Survey are also not available. For the following CIS-based indicators regional data are thus not available: Share of enterprises receiving public funding; SMEs innovating in-house; SMEs co-operating with others; Innovation expenditures; SMEs using non-technological change; Sales of new-to-firm not new-to-market products and Sales of new-to-market products.

**Table 3. Data availability by indicator**

	T-4	T-3	T-2	T-1	T
Human Resources in Science and Technology – Core	100%	100%	100%	100%	100%
Participation in life-long learning	98%	98%	98%	98%	98%
Employment in medium-high and high-tech manufacturing	100%	100%	100%	100%	100%
Employment in high-tech services	100%	100%	100%	100%	100%
Public R&D expenditures	91%	91%	91%	91%	91%
Business R&D expenditures	97%	97%	97%	97%	97%
EPO patent applications	99%	99%	99%	99%	99%

Data availability for each of the indicators over a 5 year period is good (Table 3) (Annex 3 contains the relative to EU data for all regions and all indicators for a 5 year period). The only indicator for which data availability is not near to 100% is Public R&D expenditures. For most countries data availability is

close to or equal to 100% (Table 4). The exceptions are Belgium (86%), Greece (95%), Ireland (86%), Poland (91%) and Sweden (86%).

**Table 4. Data availability by country**

	T-4	T-3	T-2	T-1	T		T-4	T-3	T-2	T-1	T
BE	86%	86%	86%	86%	86%	LU	100%	100%	100%	100%	100%
CZ	100%	100%	100%	100%	100%	HU	100%	100%	100%	100%	100%
DK	100%	100%	100%	100%	100%	MT	100%	100%	100%	100%	100%
DE	99%	99%	99%	99%	99%	NL	100%	100%	100%	100%	100%
EE	100%	100%	100%	100%	100%	AT	100%	100%	100%	100%	100%
EL	95%	95%	95%	95%	95%	PL	91%	91%	91%	91%	91%
ES	100%	100%	100%	100%	100%	PT	100%	100%	100%	100%	100%
FR	99%	99%	99%	99%	99%	SI	100%	100%	100%	100%	100%
IE	86%	86%	86%	86%	86%	SK	100%	100%	100%	100%	100%
IT	97%	97%	97%	97%	97%	FI	100%	100%	100%	100%	100%
CY	100%	100%	100%	100%	100%	SE	86%	86%	86%	86%	86%
LV	100%	100%	100%	100%	100%	UK	100%	100%	100%	100%	100%
LT	100%	100%	100%	100%	100%						

### 3. Methodology

The 2003 RIS used a composite indicator - the Revealed Regional Summary Innovation Index (RRSII) - to locate *local* leaders by taking into account both the region's relative performance within the EU and the region's relative performance within the country<sup>3</sup>. Building upon the methodology used in the 2003 RIS, two indexes are calculated of which a weighted mean is taken for the Revealed Regional Summary Innovation Index (RRSII):

- RNSII (Regional National Summary Innovation Index) - The average of the re-scaled relative to the country mean indicator values:

$$RNSII_{jkt} = \frac{1}{m} \sum_{j=1}^m x_{ijkt}^n, \text{ where } x_{ijkt}^n = \frac{\sqrt[p]{\left(\frac{X_{ijkt}}{X_{ikt}}\right)} - \sqrt[p]{\text{Min}_{\forall k, \forall t} \left(\frac{X_{ijkt}}{X_{ikt}}\right)}}{\sqrt[p]{\text{Max}_{\forall k, \forall t} \left(\frac{X_{ijkt}}{X_{ikt}}\right)} - \sqrt[p]{\text{Min}_{\forall k, \forall t} \left(\frac{X_{ijkt}}{X_{ikt}}\right)}}$$

- REUSII (Regional European Summary Innovation Index - The average of the re-scaled relative to the EU25 mean indicator values:

<sup>3</sup> The RRSII was designed to pinpoint 'local leaders'. Regions in highly performing countries will always look more favourable when compared directly to regions from less performing countries.

$$REUSII_{jkt} = \frac{1}{m} \sum_{j=1}^m x_{ijkt}^{eu}, \text{ where } x_{ijkt}^{eu} = \frac{\sqrt[p]{\left(\frac{X_{ijkt}}{X_{iEU25t}}\right)} - \sqrt[p]{\text{Min}_{\forall k, \forall t} \left(\frac{X_{ijkt}}{X_{iEU25t}}\right)}}{\sqrt[p]{\text{Max}_{\forall k, \forall t} \left(\frac{X_{ijkt}}{X_{iEU25t}}\right)} - \sqrt[p]{\text{Min}_{\forall k, \forall t} \left(\frac{X_{ijkt}}{X_{iEU25t}}\right)}}$$

where  $X_{ijkt}$  is the value of indicator  $i$  for region  $j$  in country  $k$  and time  $t$  and  $m$  is the number of indicators for which regional data are available,  $X_{ikt}$  is the country average for indicator  $i$  for country  $k$  at time  $t$ , and  $X_{iEU25t}$  is the EU25 average for indicator  $i$  at time  $t$ . The maximum and minimum values for each indicator are determined over the full 5 year period. In the re-scaling process a power-root transformation has been applied to correct for possible problems of outliers and skewed data distributions<sup>4</sup>. For Human resources, public R&D, business R&D, medium/high-tech manufacturing employment and high-tech services employment a square-root transformation has been used (with  $p$  equal to 2 in the formulas above). For life-long learning and EPO patents a double-square-root transformation has been used (with  $p$  equal to 4 in the formulas above). Both composite indicators are only calculated when data are available for at least 6 indicators.

Both RNSII and REUSII are re-scaled to fit the [0,1] range for each year before entering the RRSII calculation:

$$\overline{RNSII}_{jkt} = \frac{(RNSII_{jkt} - \text{Min}_{\forall k}(RNSII_{jkt}))}{(\text{Max}_{\forall k}(RNSII_{jkt}) - \text{Min}_{\forall k}(RNSII_{jkt}))}$$

$$\overline{REUSII}_{jkt} = \frac{(REUSII_{jkt} - \text{Min}_{\forall k}(REUSII_{jkt}))}{(\text{Max}_{\forall k}(REUSII_{jkt}) - \text{Min}_{\forall k}(REUSII_{jkt}))}$$

The RRSII is then calculated as the weighted average of the re-scaled values for RNSII and REUSII:

$$RRSII_{jkt} = \frac{3}{4} * \overline{REUSII}_{jkt} + \frac{1}{4} * \overline{RNSII}_{jkt}$$

Identifying local leaders reduces the influence of those indicators for which a country has an above average performance. Peaks for indicators for which the country performs well above the EU mean are thus adjusted downwards; peaks for indicators for which the country performs well below the EU mean are thus adjusted upwards. The RRSII will thus increase the composite indicator value for leading regions in lagging countries: local leaders become more visible. Annex 4 contains the RNSII, REUSII and RRSII scores for all regions for a 5 year period.

<sup>4</sup> Nardo, M. M. Saisana, A. Saltelli and S. Tarantola (EC/JRC), A. Hoffman and E. Giovannini (OECD), Handbook On Constructing Composite Indicators: Methodology And User Guide, OECD Statistics Working Paper ([http://www.oilis.oecd.org/oilis/2005doc.nsf/LinkTo/std-doc\(2005\)3](http://www.oilis.oecd.org/oilis/2005doc.nsf/LinkTo/std-doc(2005)3)).



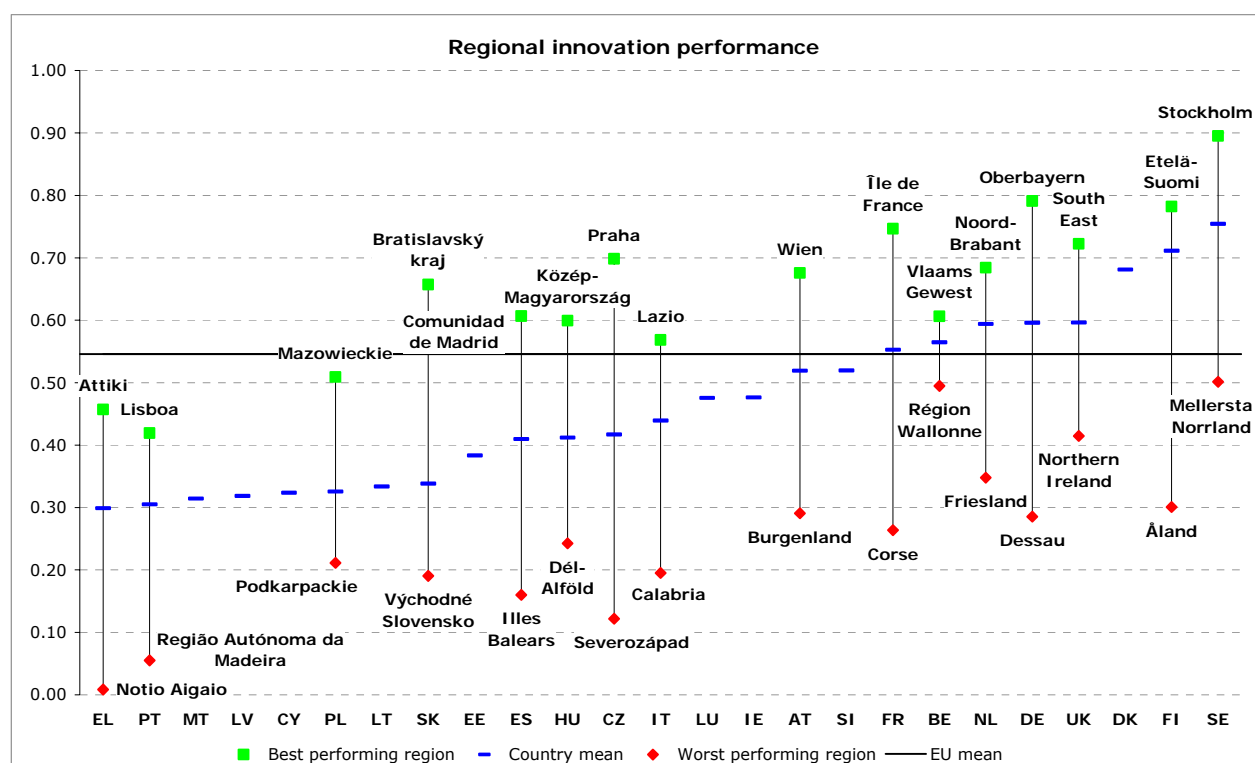
#### 4. Regional innovation performance

Regional innovation performance as measured by the RRSII is shown in Figure 1. Countries are ranked according to their average innovation performance as measured by their RRSII. For each country Figure 1 shows the best and worst performing region. The Swedish region Stockholm is overall the best performing region, the Greek region Notio Aigaio is overall the worst performing region.

Regions can be classified into different groups using hierarchical clustering. These groups are indicated in Table 5 by alternating white and grey backgrounds. The Top-10 performing regions are Stockholm in Sweden, followed by Västsverige (SE), Oberbayern (DE), Etelä-Suomi (FI), Karlsruhe (DE), Stuttgart (DE), Braunschweig (DE), Sydsverige (SE), Île de France (FR) and Östra Mellansverige (SE). As expected from the *European Innovation Scoreboard* country performance, regions from EU15 countries dominate the best performing regions with 47 regions in the Top-50 and 94 regions in the Top-100. From the new member states regions, we find Praha (CZ) on rank 15, Bratislavský kraj (SK) on rank 27, Közép-Magyarország (HU) on rank 34, Slovenia on rank 63, Mazowieckie (PL) on rank 65 and Jihovýchod (CZ) on rank 100.

Annex 1 summarizes regional innovation performance and the relative contribution of each of the indicators for all regions for which sufficient data was available. These graphs can be used to identify relative strengths and weaknesses. For example, Stockholm’s relative weakness is in medium-high and high-tech manufacturing and Braunschweig’s relative strength is in business R&D. These graphs can also be used to compare a region’s performance with “neighboring” regions or other regions in the same group of regions.

**Figure 1 Regional innovation performance**



**Table 5. Regional innovation performance**

1	Stockholm (SE)	0.90	75	Provence-Alpes-Côte d'Azur (FR)	0.49	146	Champagne-Ardenne (FR)	0.32
2	Västssverige (SE)	0.83	76	Comunidad Foral de Navarra (ES)	0.48	147	Weser-Ems (DE)	0.32
3	Oberbayern (DE)	0.79	77	Southern and Eastern (IE)	0.48	148	Latvia (LV)	0.32
4	Etelä-Suomi (FI)	0.78	78	North East (UK)	0.48	149	Malta (MT)	0.31
5	Karlsruhe (DE)	0.77	79	Luxembourg (Grand-Duché) (LU)	0.48	150	Strední Morava (CZ)	0.31
6	Stuttgart (DE)	0.77	80	Wales (UK)	0.48	151	Poludniowo-Zachodni (PL)	0.31
7	Braunschweig (DE)	0.76	81	Emilia-Romagna (IT)	0.47	152	Campania (IT)	0.31
8	Sydsverige (SE)	0.76	82	Cataluña (ES)	0.47	153	Centro (PT) (PT)	0.31
9	Île de France (FR)	0.75	83	Tirol (AT)	0.47	154	Åland (FI)	0.30
10	Östra Mellansverige (SE)	0.74	84	Brandenburg (DE)	0.47	155	Lódzkie (PL)	0.29
11	Berlin (DE)	0.74	85	Centre (FR)	0.46	156	Slaskie (PL)	0.29
12	South East (UK)	0.72	86	Attiki (GR)	0.46	157	Burgenland (AT)	0.29
13	Tübingen (DE)	0.72	87	Picardie (FR)	0.46	158	Región de Murcia (ES)	0.29
14	Manner-Suomi (FI)	0.71	88	Chemnitz (DE)	0.46	159	Basilicata (IT)	0.29
15	Praha (CZ)	0.70	89	Scotland (UK)	0.45	160	Dessau (DE)	0.29
16	Darmstadt (DE)	0.69	90	Aragón (ES)	0.45	161	Lubelskie (PL)	0.27
17	Eastern (UK)	0.69	91	Schleswig-Holstein (DE)	0.45	162	Pólnocny (PL)	0.27
18	Dresden (DE)	0.69	92	Oberösterreich (AT)	0.45	163	Cantabria (ES)	0.27
19	Köln (DE)	0.69	93	Languedoc-Roussillon (FR)	0.44	164	Kentriki Makedonia (GR)	0.27
20	Noord-Brabant (NL)	0.68	94	Liguria (IT)	0.44	165	Molise (IT)	0.27
21	Denmark (DK)	0.68	95	Friuli-Venezia Giulia (IT)	0.44	166	Principado de Asturias (ES)	0.27
22	Pohjois-Suomi (FI)	0.68	96	Saarland (DE)	0.44	167	Stredné Slovensko (SK)	0.27
23	Mittelfranken (DE)	0.68	97	Oberfranken (DE)	0.44	168	Corse (FR)	0.26
24	Wien (AT)	0.68	98	Aquitaine (FR)	0.44	169	Andalucia (ES)	0.26
25	Utrecht (NL)	0.66	99	Vorarlberg (AT)	0.43	170	Valle d'Aosta/Vallée d'Aoste (IT)	0.26
26	Rheinessen-Pfalz (DE)	0.66	100	Jihovýchod (CZ)	0.43	171	Západné Slovensko (SK)	0.26
27	Bratislavský kraj (SK)	0.66	101	Strední Cechy (CZ)	0.43	172	Pólnocno-Zachodni (PL)	0.26
28	Länsi-Suomi (FI)	0.65	102	Kärnten (AT)	0.43	173	Észak-Alföld (HU)	0.26
29	Freiburg (DE)	0.63	103	Arnsberg (DE)	0.43	174	Kriti (GR)	0.26
30	Midi-Pyrénées (FR)	0.61	104	Toscana (IT)	0.43	175	Dél-Dunántúl (HU)	0.26
31	Comunidad de Madrid (ES)	0.61	105	Detmold (DE)	0.43	176	Nyugat-Dunántúl (HU)	0.25
32	Vlaams Gewest (BE)	0.61	106	Pays de la Loire (FR)	0.42	177	Sicilia (IT)	0.25
33	Rhône-Alpes (FR)	0.60	107	Umbria (IT)	0.42	178	Észak-Magyarország (HU)	0.25
34	Közép-Magyarország (HU)	0.60	108	Lisboa (PT)	0.42	179	Dél-Alföld (HU)	0.24
35	London (UK)	0.59	109	Abruzzo (IT)	0.42	180	Moravskoslezsko (CZ)	0.24
36	Flevoland (NL)	0.59	110	Halle (DE)	0.42	181	La Rioja (ES)	0.23
37	South West (UK)	0.58	111	Auvergne (FR)	0.42	182	Dytiki Ellada (GR)	0.23
38	Zuid-Holland (NL)	0.58	112	Limousin (FR)	0.42	183	Canarias (ES) (ES)	0.23
39	Gelderland (NL)	0.58	113	Northern Ireland (UK)	0.41	184	Sardegnia (IT)	0.23
40	Noord-Holland (NL)	0.58	114	Niederbayern (DE)	0.41	185	Puglia (IT)	0.22
41	Steiermark (AT)	0.58	115	Trier (DE)	0.41	186	Norte (PT)	0.22
42	West Midlands (UK)	0.57	116	Salzburg (AT)	0.41	187	Podkarpackie (PL)	0.21
43	Leipzig (DE)	0.57	117	Münster (DE)	0.41	188	Calabria (IT)	0.20
44	Lazio (IT)	0.57	118	Haute-Normandie (FR)	0.41	189	Východné Slovensko (SK)	0.19
45	Norra Mellansverige (SE)	0.57	119	Kassel (DE)	0.41	190	Algarve (PT)	0.19
46	Övre Norrland (SE)	0.57	120	Basse-Normandie (FR)	0.41	191	Ipeiros (GR)	0.19
47	East Midlands (UK)	0.57	121	Lorraine (FR)	0.40	192	Stereia Ellada (GR)	0.17
48	Schwaben (DE)	0.56	122	Veneto (IT)	0.40	193	Extremadura (ES)	0.17
49	Gießen (DE)	0.56	123	Drenthe (NL)	0.38	194	Castilla-la Mancha (ES)	0.17
50	Hannover (DE)	0.56	124	Estonia (EE)	0.38	195	Illes Balears (ES)	0.16
51	Alsace (FR)	0.55	125	Koblenz (DE)	0.38	196	Alentejo (PT)	0.13
52	Unterfranken (DE)	0.55	126	Lüneburg (DE)	0.38	197	Anatoliki Makedonia, Thraki (GR)	0.13
53	Hamburg (DE)	0.55	127	Mecklenburg-Vorpommern (DE)	0.37	198	Severozápad (CZ)	0.12
54	Oberpfalz (DE)	0.55	128	Niederösterreich (AT)	0.37	199	Peloponnisos (GR)	0.10
55	Pais Vasco (ES)	0.55	129	Bourgogne (FR)	0.36	200	Thessalia (GR)	0.10
56	North West (UK)	0.54	130	Comunidad Valenciana (ES)	0.36	201	Dytiki Makedonia (GR)	0.07
57	Småland med öarna (SE)	0.54	131	Zeeland (NL)	0.36	202	Voreio Aigaio (GR)	0.04
58	Limburg (NL) (NL)	0.53	132	Marche (IT)	0.35	203	Notio Aigaio (GR)	0.01
59	Thüringen (DE)	0.53	133	Border, Midlands and Western (IE)	0.35	204	Ionia Nisia (GR)	N/A
60	Bremen (DE)	0.53	134	Malopolskie (PL)	0.35	205	Provincia Autonoma Bolzano-Bozen (IT)	N/A
61	Groningen (NL)	0.52	135	Castilla y León (ES)	0.35	206	Provincia Autonoma Trento (IT)	N/A
62	Région de Bruxelles-Capitale (BE)	0.52	136	Friesland (NL)	0.35	207	Swietokrzyskie (PL)	N/A
63	Slovenia (SI)	0.52	137	Magdeburg (DE)	0.35	208	Podlaskie (PL)	N/A
64	Overijssel (NL)	0.52	138	Jihozápad (CZ)	0.34			
65	Mazowieckie (PL)	0.51	139	Severovýchod (CZ)	0.34			
66	Bretagne (FR)	0.51	140	Nord - Pas-de-Calais (FR)	0.34			
67	Franche-Comté (FR)	0.51	141	Poitou-Charentes (FR)	0.34			
68	Mellersta Norrland (SE)	0.50	142	Galicia (ES)	0.34			
69	Région Wallonne (BE)	0.49	143	Lithuania (LT)	0.33			
70	Itä-Suomi (FI)	0.49	144	Közép-Dunántúl (HU)	0.33			
71	Lombardia (IT)	0.49	145	Cyprus (CY)	0.32			
72	Yorkshire and The Humber (UK)	0.49						
73	Piemonte (IT)	0.49						
74	Düsseldorf (DE)	0.49						

## 5. Changes in methodology

Between 2002 and 2006, the methodology of calculating the composite innovation index has changed. Table 6 summarizes these changes. The 2002 RIS used the most 'simple' methodology, data were not transformed nor re-scaled and both the national and European component received an equal weights. The 2003 RIS introduced the re-scaling of the indicators and also included 5 indicators from the 2<sup>nd</sup> Community Innovation Survey (CIS). The 2006 RIS introduces the transformation of the data, with a square root transformation for 5 indicators and a double-square root transformation for 2 indicators. The 2006 RIS uses a smaller weight for the national component of ¼ only. Another change has been the division by the country average respectively the EU25 average in the calculation of the national respectively European component.

Due to these changes in the methodology of calculating the RRSII, one needs to be careful comparing the results between the 2002, 2003 and 2006 RIS. As illustrated in Table 7, a region's rank can change significantly over time due to these changes. Two cases are highlighted, Noord-Brabant and Comunidad De Madrid. Noord-Brabant is showing a large drop in rank, from 3 in 2002 and 4 in 2003 to 20 in 2006. Comunidad de Madrid shows a drop from 9 in 2002, to 13 and 2003 and 31 in 2006.

**Table 6. Changes in methodology over time**

	2002 RIS	2003 RIS	2006 RIS
Transformation of the data	No	No	Square root transformation for 5 indicators, double-square root transformation for 2 indicators
Re-scaling of the data	No	'MinMax'	'MinMax'
Indicator weights	Equal	0.5 for CIS indicators, 1 for other indicators	Equal
RNSII	$\left(\frac{100}{m}\right) * \sum_i^m \frac{X_{ijk}}{\bar{X}_{ik}}$	$\sum_{j=1}^m x_{ijk}^{jn} \text{ where}$ $x_{ijk}^{jn} = \frac{X_{ijk} - \text{Min}(X_{ijk})}{\text{Max}(X_{ijk}) - \text{Min}(X_{ijk})}$	$\sum_{j=1}^m x_{ijk}^{jn} \text{ where}$ $x_{ijk}^{jn} = \frac{\sqrt[p]{\left(\frac{X_{ijk}}{\bar{X}_{ik}}\right)} - \sqrt[p]{\text{Min}_{\forall k} \left(\frac{X_{ijk}}{\bar{X}_{ik}}\right)}}{\sqrt[p]{\text{Max}_{\forall k} \left(\frac{X_{ijk}}{\bar{X}_{ik}}\right)} - \sqrt[p]{\text{Min}_{\forall k} \left(\frac{X_{ijk}}{\bar{X}_{ik}}\right)}}$
REUSII	$\left(\frac{100}{m}\right) * \sum_i^m \frac{X_{ij}}{\bar{X}_{i,EU}}$	$\sum_{j=1}^m x_{ijk}^{eu} \text{ where}$ $x_{ijk}^{eu} = \frac{X_{ijk} - \text{Min}(X_{ij})}{\text{Max}(X_{ij}) - \text{Min}(X_{ij})}$	$\sum_{j=1}^m x_{ijk}^{eu} \text{ where}$ $x_{ijk}^{eu} = \frac{\sqrt[p]{\left(\frac{X_{ijk}}{\bar{X}_{i,EU25}}\right)} - \sqrt[p]{\text{Min}_{\forall k} \left(\frac{X_{ijk}}{\bar{X}_{i,EU25}}\right)}}{\sqrt[p]{\text{Max}_{\forall k} \left(\frac{X_{ijk}}{\bar{X}_{i,EU25}}\right)} - \sqrt[p]{\text{Min}_{\forall k} \left(\frac{X_{ijk}}{\bar{X}_{i,EU25}}\right)}}$
Weight of national component ( $\varphi$ )	½	½	¼

Where  $X_{ijk}$  is the value of indicator i for region j in country k,  $\bar{X}_{ik}$  is the value of indicator i for country k,  $\bar{X}_{i,EU25}$  is the value of indicator i for the EU and m is the number of indicators for which regional data are available.

**Table 7. Effect of changes in methodology on the ranking of regions**

2002 RIS	Rank RRSII 2003 RIS			Rank RRSII 2006 RIS			Rank RRSII				
Stockholm	SE	1	225	Stockholm	SE	1	1.00	Stockholm	SE	1	0.90
Uusimaa (Suurlue)	FI	2	208	Uusimaa (suurlue)	FI	2	0.97	Västsverige	SE	2	0.83
<b>Noord-Brabant</b>	<b>NL</b>	<b>3</b>	<b>191</b>	Oberbayern	DE	3	0.95	Oberbayern	DE	3	0.79
Eastern	UK	4	161	<b>Noord-Brabant</b>	<b>NL</b>	<b>4</b>	<b>0.90</b>	Etelä-Suomi	FI	4	0.78
Pohjois-Suomi	FI	5	161	South East	UK	5	0.87	Karlsruhe	DE	5	0.77
Île De France	FR	6	160	Île De France	FR	6	0.82	Stuttgart	DE	6	0.77
Bayern	DE	7	151	Stuttgart	DE	7	0.80	Braunschweig	DE	7	0.76
South East	UK	8	150	Wien	AT	8	0.79	Sydsverige	SE	8	0.76
<b>Comunidad De Madrid</b>	<b>ES</b>	<b>9</b>	<b>149</b>	Eastern	UK	9	0.76	Île de France	FR	9	0.75
Baden-Württemberg	DE	10	146	Karlsruhe	DE	10	0.75	Östra Mellansverige	SE	10	0.74
Wien	AT	17	126	Southern and Eastern	IE	11	0.74	South East	UK	12	0.73
Vlaams Gewest	BE	21	112	<b>Comunidad De Madrid</b>	<b>ES</b>	<b>13</b>	<b>0.72</b>	Praha	CZ	15	0.70
Lombardia	IT	22	112	Bruxelles/Brussels	BE	14	0.71	<b>Noord-Brabant</b>	<b>NL</b>	<b>20</b>	<b>0.68</b>
Southern And Eastern	IE	31	108	Lombardia	IT	22	0.67	Wien	AT	24	0.68
Lisboa E Vale Do Tejo	PT	49	94	Attiki Aigaio	EL	29	0.61	Bratislavský kraj	SK	27	0.66
Attiki Aigaio	EL	50	93	Lisboa e Vale do Tejo	PT	30	0.60	<b>Comunidad de Madrid</b>	<b>ES</b>	<b>31</b>	<b>0.61</b>
								Vlaams Gewest	BE	32	0.61
								Közép-Magyarország	HU	34	0.60
								Lazio	IT	44	0.57
								Mazowieckie	PL	65	0.51
								Southern and Eastern	IE	78	0.48
								Attiki Aigaio	EL	86	0.46
								Lisboa e Vale do Tejo	PT	108	0.42

**Figure 2. Changes in rankings explained: Noord-Brabant and Comunidad De Madrid**

<b>Noord-Brabant</b>				
Weighting of national and European composite indicators	RE-SCALING OF THE DATA			
	YES		NO	
	TRANSFORMATION OF THE DATA		TRANSFORMATION OF THE DATA	
	YES	NO	YES	NO
$\Phi = 1 / 2$	19	12	14	4
$\Phi = 1 / 3$	22	14	20	5
$\Phi = 1 / 4$	20	13	23	5
<ol style="list-style-type: none"> <li>1. Re-scaling leads to lower rank of 8 spots when data are not transformed (<math>\phi=1/4</math>). Re-scaling leads to a higher rank of 3 spots when data are transformed (<math>\phi=1/4</math>).</li> <li>2. Transformation leads to lower rank of about 7 spots when data are re-scaled (<math>\phi=1/4</math>) and to a lower rank of 18 spots when data are not re-scaled (<math>\phi=1/4</math>).</li> <li>3. Weighting has only a small impact on ranking when data are re-scaled.</li> </ol>				
<b>Comunidad de Madrid</b>				
Weighting of national and European composite indicators	RE-SCALING OF THE DATA			
	YES		NO	
	TRANSFORMATION OF THE DATA		TRANSFORMATION OF THE DATA	
	YES	NO	YES	NO
$\Phi = 1 / 2$	22	20	19	30
$\Phi = 1 / 3$	30	30	25	40
$\Phi = 1 / 4$	31	32	26	49
<ol style="list-style-type: none"> <li>1. Re-scaling leads to lower rank of 5 spots when data are transformed (<math>\phi=1/4</math>). Re-scaling leads to a higher rank of 17 spots when data are not transformed (<math>\phi=1/4</math>).</li> <li>2. Transformation has almost no impact on ranking when data are re-scaled (<math>\phi=1/4</math>). Transformation leads to a higher rank of about 23 spots when data are not re-scaled (<math>\phi=1/4</math>).</li> <li>3. Weighting leads to lower rank of 9 spots when the national component receives a weight of 25% instead of 50% when data are re-scaled and transformed.</li> </ol>				

For Noord-Brabant, it is both the introduction of the re-scaling of data and the transformation of the data that causes a severe drop of about 16 spots in the region’s rank between 2002 and 2006 (Figure 2). Changes in the weighting of the national component has almost no impact on the rank of this region. For Comunidad De Madrid, transforming the data has almost no impact on the ranking of the region once the data have been re-scaled. Re-scaling the data leads to an drop of 5 spots once the date have been transformed. For Comunidad De Madrid it is primarily the change in the weight of the national component which has the biggest impact on the rank of the region. Decreasing this weight from 50% to 25% will lead to a drop of about 19 spots in 2006 (Figure 2).

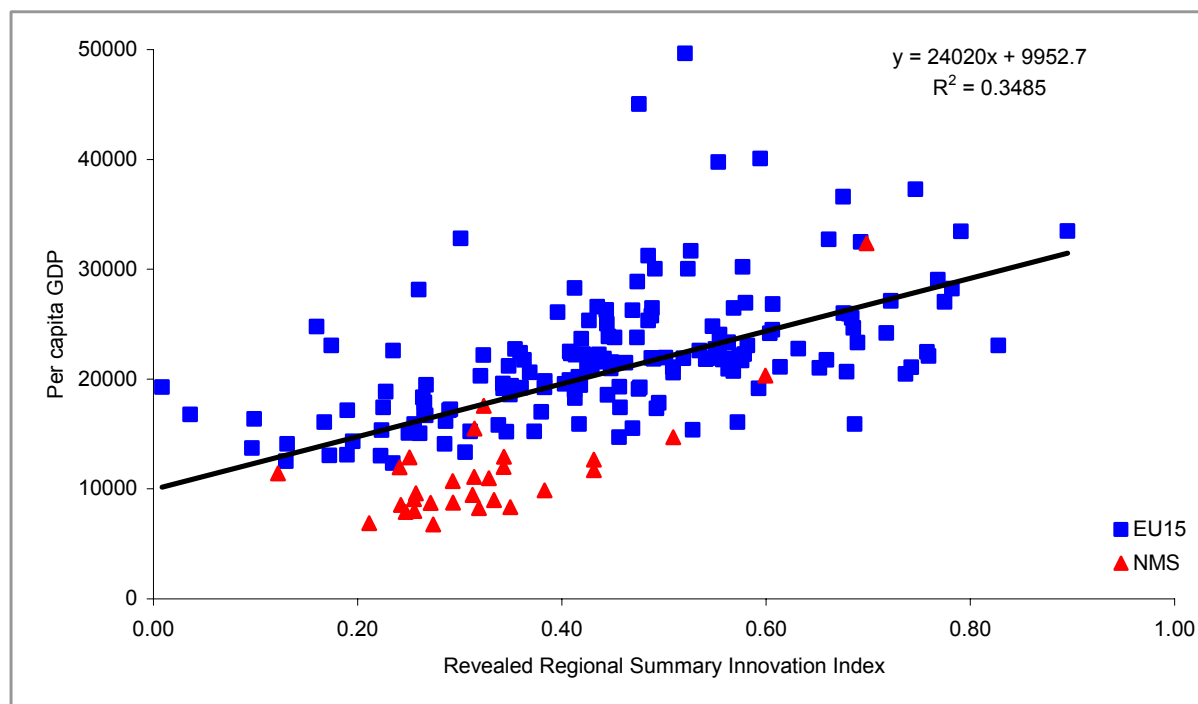
Annex 2 provides comparable results for all regions for the following ‘scenarios’:

- Columns 3 and 4: Transformation and re-scaling of the data, national weight of ¼. The results are identical to those of the 2006 RIS.
- Columns 5 and 6: Transformation and re-scaling of the data, national weight of ½. These results show the impact on each region’s ranking of the change in the weights of the national component in the RRSII.
- Columns 7 and 8: No transformation and re-scaling of the data, national weight of ½. These results come closest to a ‘2006 ranking’ if one would apply the 2003 RIS methodology.
- Columns 9 and 10: No transformation and no re-scaling of the data , national weight of ½. These results come closest to a ‘2006 ranking’ if one would apply the 2002 RIS methodology.

A comparison of the different ranking in Annex 2 will quickly show that a region’s rank is dependent on the methodology used for calculating the RRSII. One should thus be careful by placing too much emphasis on the rank of a region as such. It is far better to look at the group of comparable regions. Groups of regions can a.o. be determined by cluster analysis, an example of which has been shown in Table 5.

## 6. Economic performance

**Figure 3. Innovative and economic performance on a regional level**



About 35 percent of the variation in regional per capita income can be explained by differences in innovative performance (Figure 3). This suggests a positive relation between a region’s innovative performance as measured by its RIS and its economic performance. The high per capita income levels for e.g. Brussels and Luxembourg, however, do point out that also other factors generate high incomes. As in previous RIS reports, the link between innovative and economic performance is only weak.

### 7. Innovation performance over time

Using time series data RRSII’s were constructed for a 5-year period. Table 8 shows the correlation results between these RRSII’s and the average annual increase of the RRSII. The correlation coefficient between RRSII at T-1 and the growth of the RRSII is negative and significant at the 1% level. There are weak signs of “catching up” in innovation performance, as shown in Figure 4.

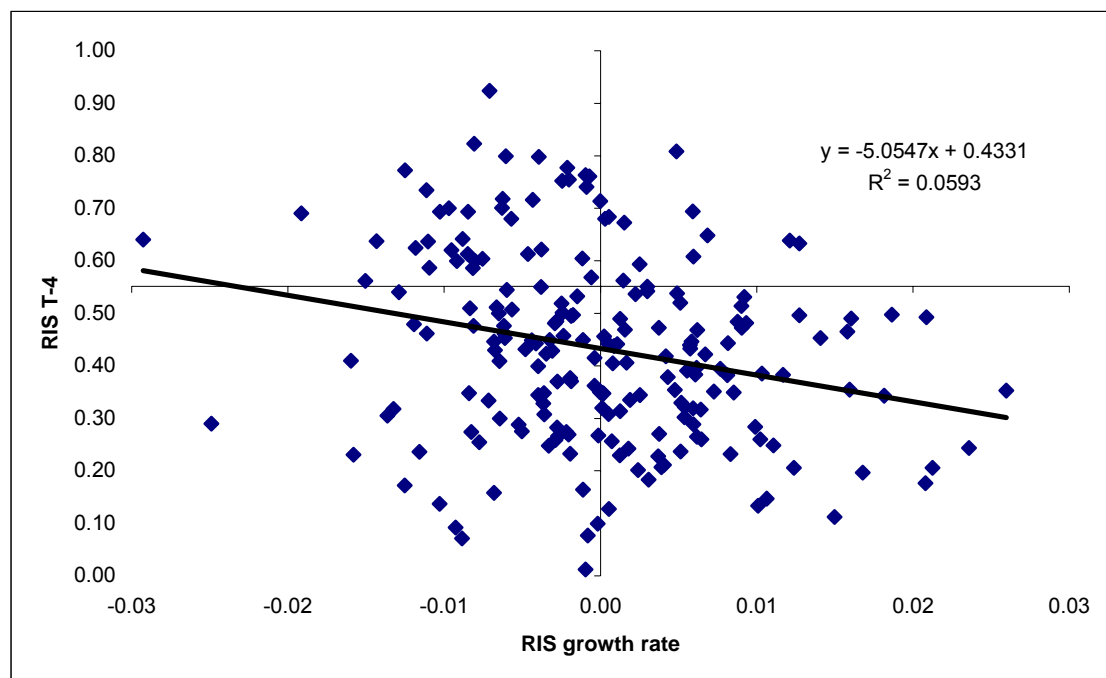
**Table 8. Correlation results between RRSII over time and its growth rate**

		Correlations					
		T_4	T_3	T_2	T_1	T	GR
T_4	Pearson Correlation	1	.993**	.989**	.982**	.981**	-.237**
	Sig. (2-tailed)		.000	.000	.000	.000	.001
	N	205	205	205	205	205	205
T_3	Pearson Correlation	.993**	1	.991**	.982**	.981**	-.204**
	Sig. (2-tailed)	.000		.000	.000	.000	.003
	N	205	205	205	205	205	205
T_2	Pearson Correlation	.989**	.991**	1	.987**	.985**	-.166*
	Sig. (2-tailed)	.000	.000		.000	.000	.017
	N	205	205	205	205	205	205
T_1	Pearson Correlation	.982**	.982**	.987**	1	.988**	-.113
	Sig. (2-tailed)	.000	.000	.000		.000	.105
	N	205	205	205	205	205	205
T	Pearson Correlation	.981**	.981**	.985**	.988**	1	-.054
	Sig. (2-tailed)	.000	.000	.000	.000		.440
	N	205	205	205	205	205	205
GR	Pearson Correlation	-.237**	-.204**	-.166*	-.113	-.054	1
	Sig. (2-tailed)	.001	.003	.017	.105	.440	
	N	205	205	205	205	205	206

\*\* . Correlation is significant at the 0.01 level (2-tailed).

\* . Correlation is significant at the 0.05 level (2-tailed).

**Figure 4. Weak signs of catching up in innovation performance**



## 8. Future updates of the RIS

“From 2007 onwards, the Commission will update and improve the regional scoreboard every two years, notably based on the CIS.”

“Member States are encouraged to develop their own initiatives, based on the EIS methodology, to measure and benchmark regional innovation performances on the basis of a commonly agreed approach.”

*Françoise Le Bail*

*Deputy Director General, DG Enterprise and Industry*

*Conference on Regions for Economic change – Innovating through EU Regional Policy, 12 June 2006*

The Commission is planning a bi-annual Regional Innovation Scoreboard starting in 2007. Future updates of the RIS should focus on two main possibilities for improvement: improved data availability in particular from the Community Innovation Survey and an improved methodology.

### 8.1 Data availability and indicators

CIS4 is expected to provide regional data for more countries. Regional CIS4 results are collected on a voluntary basis but unfortunately not all countries have respected the recommended sample stratification with regard to the regional dimension. CIS4 data are expected to become available in 2007 for 22 countries:

- At the NUTS I level for 3 countries: AT, BE, UK;
- At the NUTS II level for 10 countries: BG, EL, ES, IT, NL, NO, PL, PT, RO, SK;
- Plus for 9 countries being a NUTS II region: CY, DK, EE, IS, LT, LU, LV, MT, SI.

Countries for which regional CIS4 data are not expected to be available are Czech Republic, Germany, France, Hungary, Finland and Sweden.

## 8.2 Improve future methodology

Future research to improve the methodology of the Regional Innovation Scoreboard should focus on the following research questions:

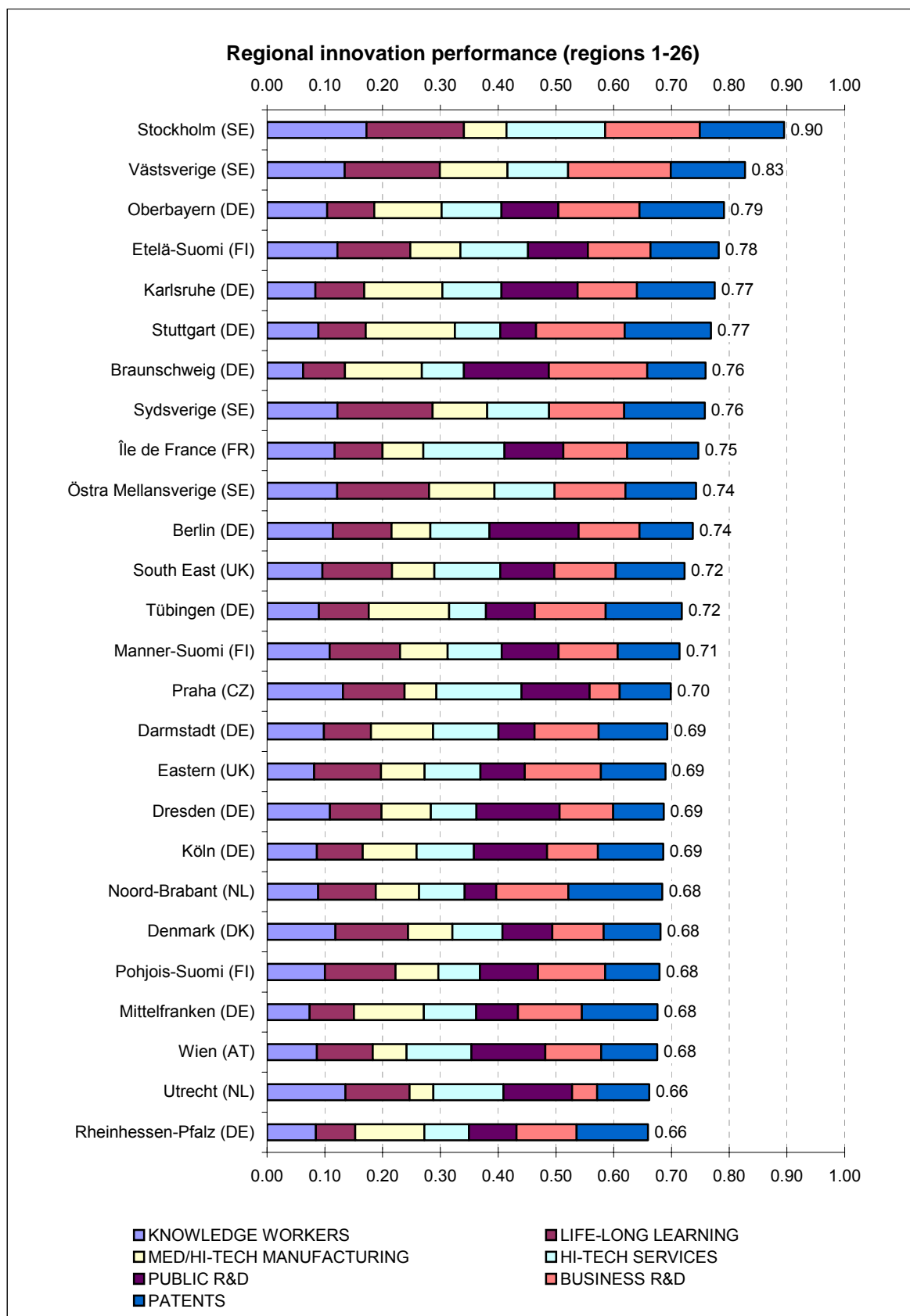
- With improved data availability, is the RIS able to duplicate the EIS innovation dimensions? Will it be possible to calculate a composite indicator for each innovation dimension?
- Should the indicators be weighted? E.g. either directly or indirectly through the use of the composite indicators for each innovation dimension.
- Should the data be transformed when data are distributed asymmetrical and which transformation scheme should be applied?
- What is the most appropriate technique to re-scale the indicator data so that all re-scaled indicators will use the same unit of measurement?
- Could one apply the “benefit of the doubt” method where, simply said, each region receives its “best” composite indicator score?

And finally, both as a word of warning and as a suggestion to improve the use of the RIS:

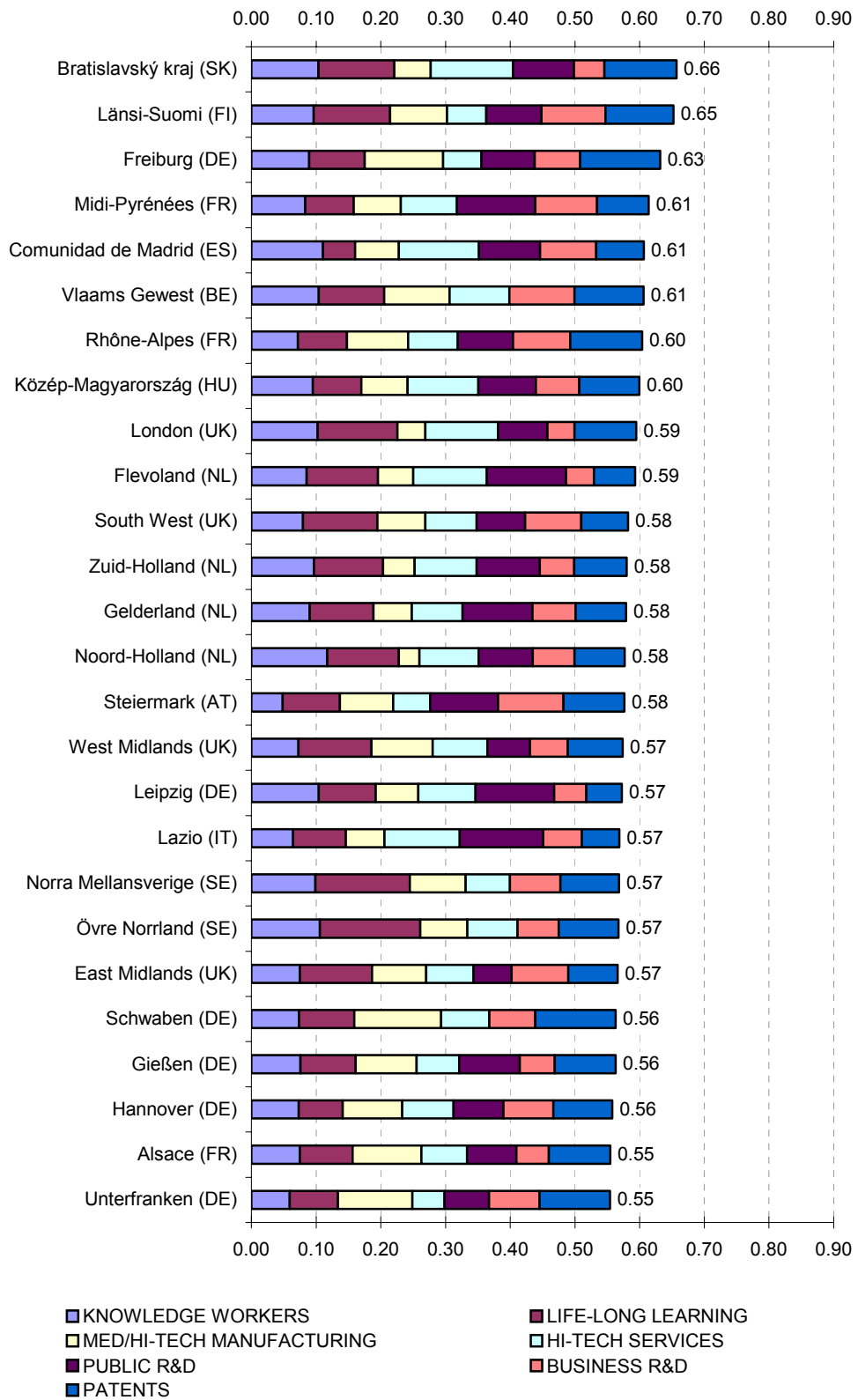
- Do not focus too much on individual composite indicator scores, but focus on groups of regions and shifts over time of regions between groups

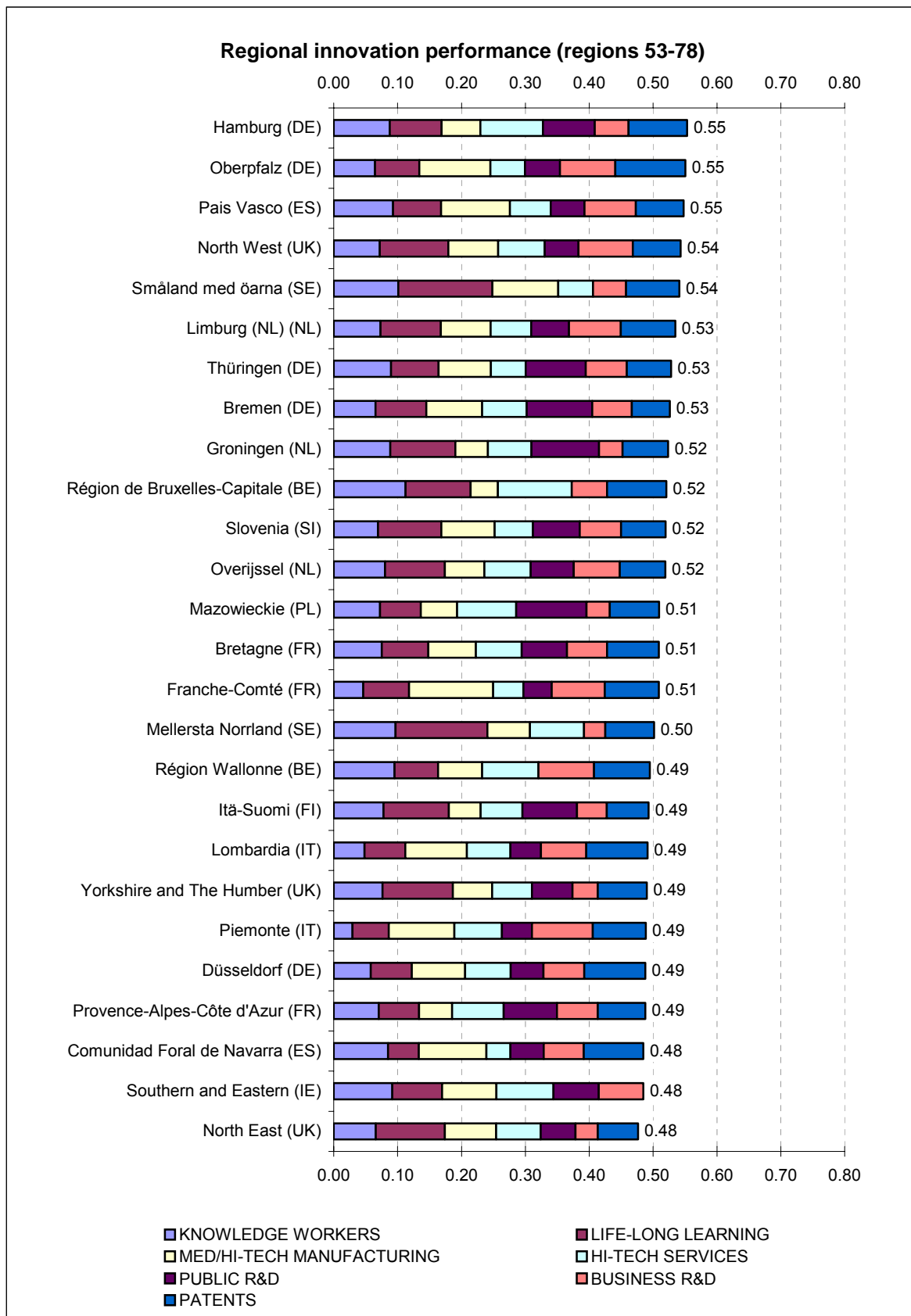


### Annex 1. The contribution of each indicator to the RRSII

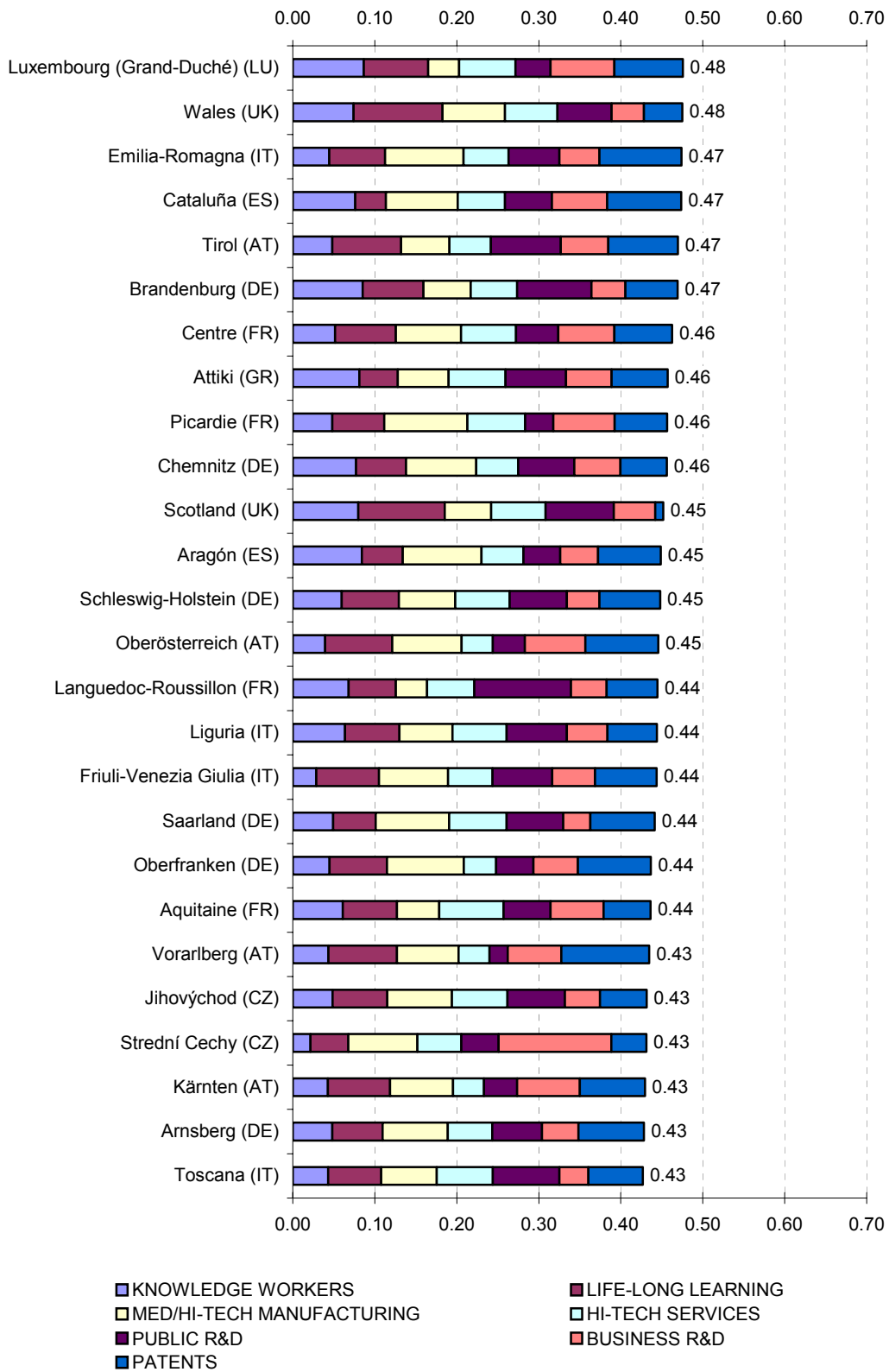


### Regional innovation performance (regions 27-52)

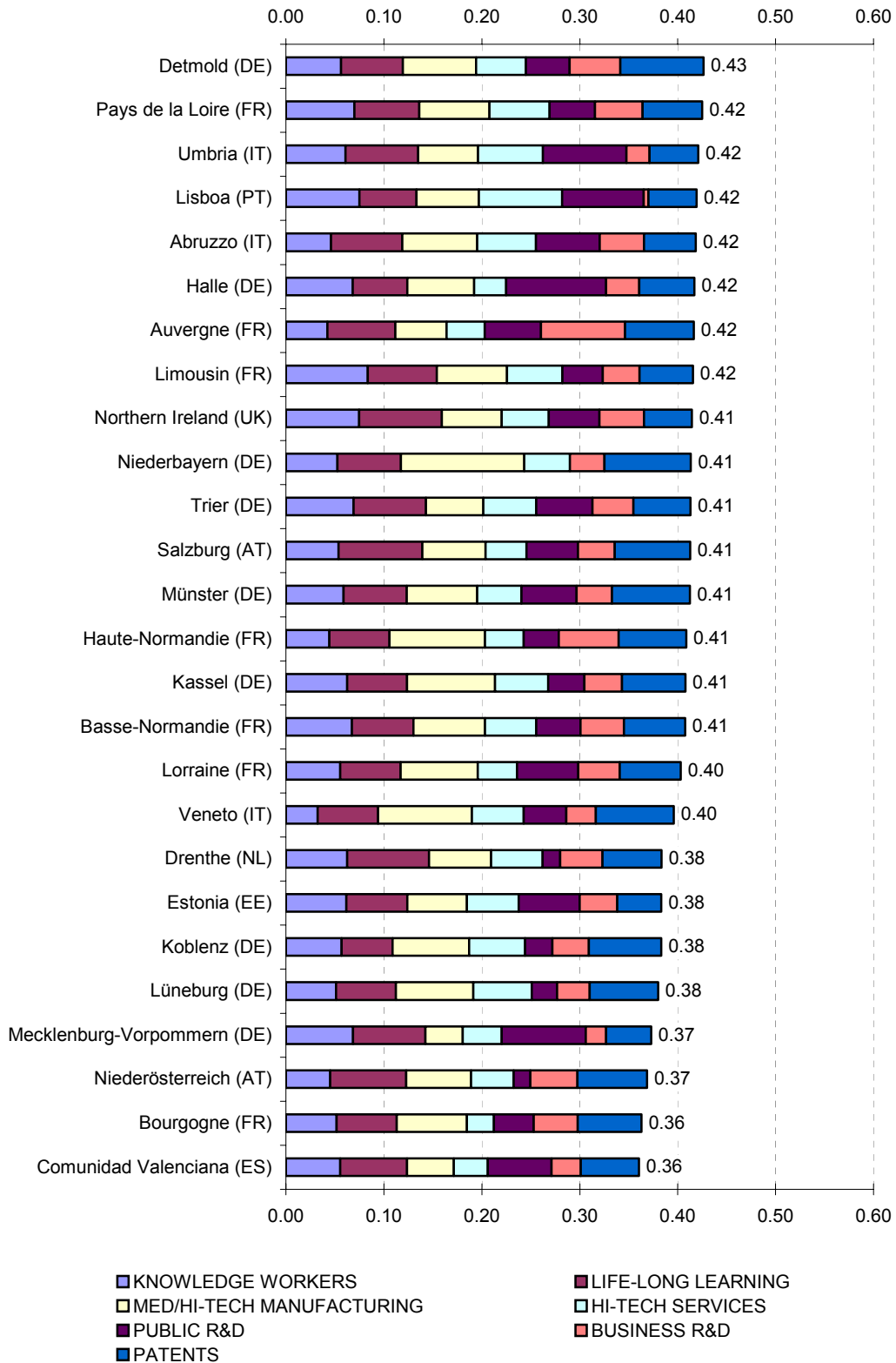




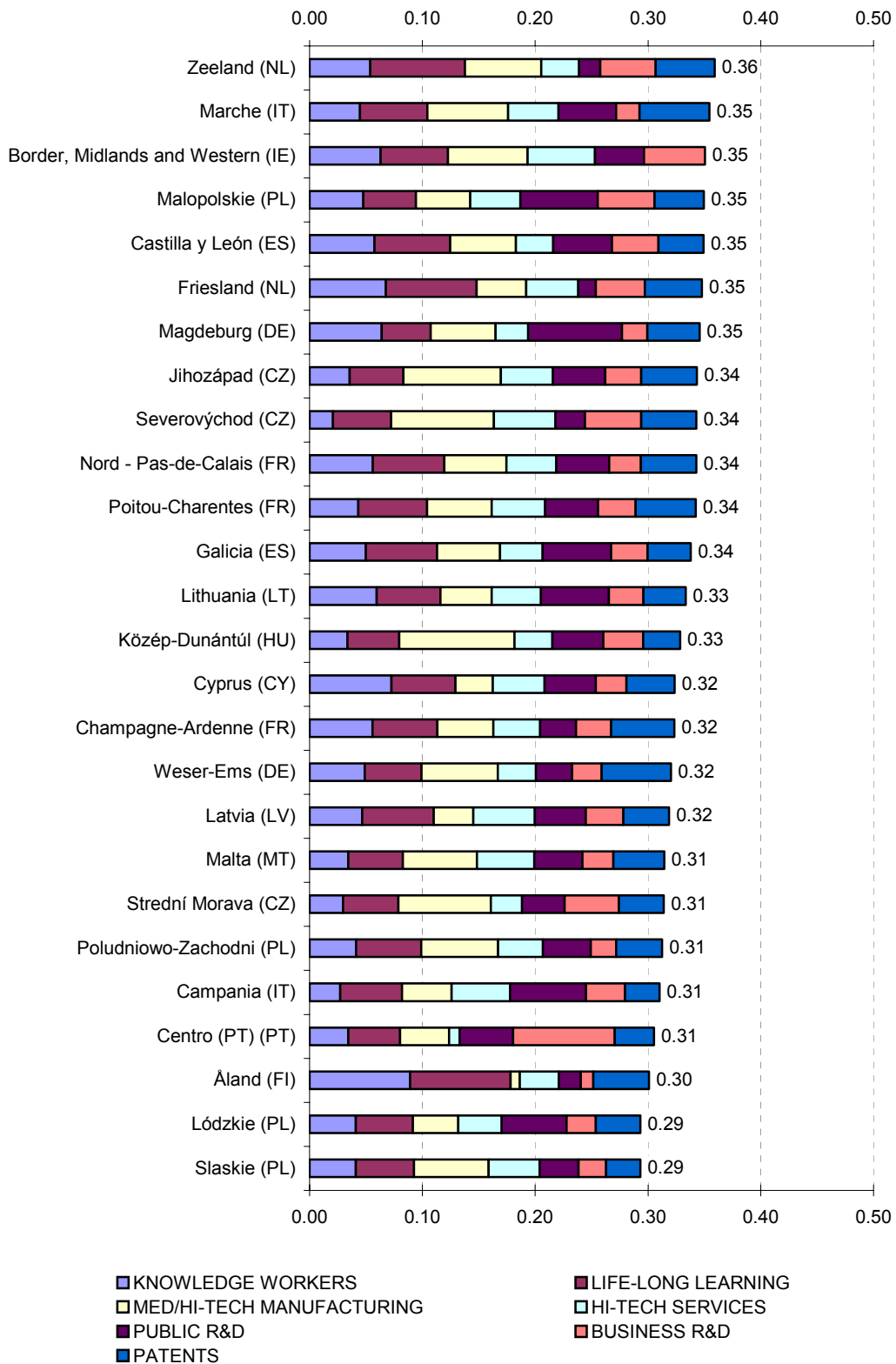
### Regional innovation performance (regions 79-104)



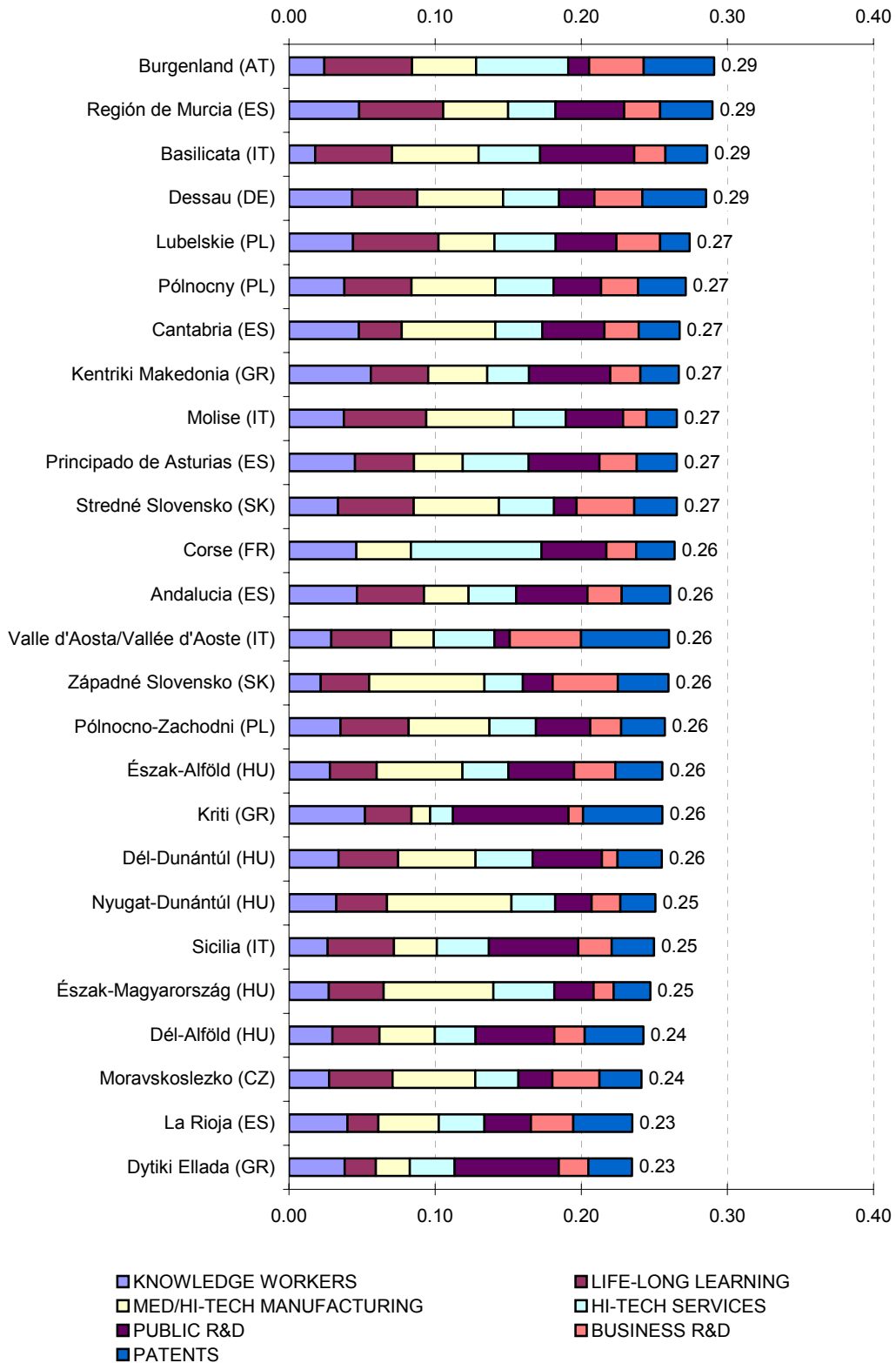
### Regional innovation performance (regions 105-130)



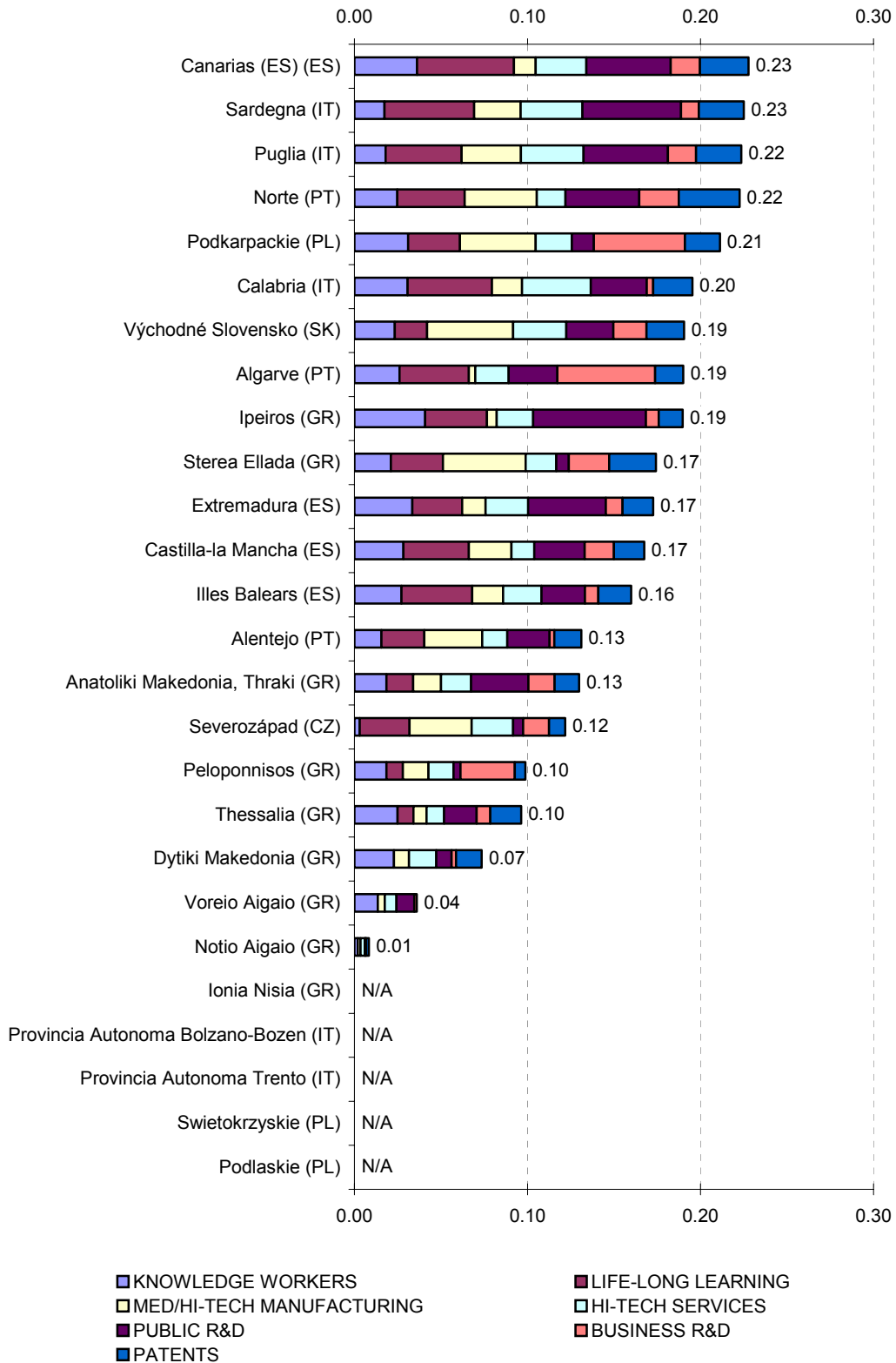
### Regional innovation performance (regions 131-156)



### Regional innovation performance (regions 157-182)



### Regional innovation performance (regions 183-208)





## Annex 2. Changes in methodology: impact on regions' ranks

		RIS 2006				"RIS 2003"		"RIS 2002"	
	Transformation	YES		YES		NO		NO	
	Re-scaling	YES		YES		YES		NO	
	National weight	1/4		1/2		1/2		1/2	
		RRSII	Rank	RRSII	Rank	RRSII	Rank	RRSII	Rank
be	Belgium								
be1	Région de Bruxelles-Capitale	0.52	62	0.48	70	0.33	75	93	79
be2	Vlaams Gewest	0.61	32	0.58	37	0.40	41	115	40
be3	Région Wallonne	0.49	69	0.45	82	0.29	87	90	86
cz	Czech Republic								
cz01	Praha	0.70	15	0.76	3	0.65	3	147	16
cz02	Strední Cechy	0.43	101	0.45	85	0.33	74	111	43
cz03	Jihozápad	0.34	138	0.36	135	0.23	128	73	131
cz04	Severozápad	0.12	198	0.11	200	0.07	199	42	198
cz05	Severovýchod	0.34	139	0.36	136	0.23	125	77	118
cz06	Jihovýchod	0.43	100	0.46	80	0.30	81	88	91
cz07	Strední Morava	0.31	150	0.32	147	0.20	149	70	145
cz08	Moravskoslezsko	0.24	180	0.24	180	0.13	187	54	184
dk	Denmark	0.68	21	0.62	28	0.46	29	128	28
de	Germany								
de1	Baden-Württemberg								
de11	Stuttgart	0.77	6	0.73	6	0.65	4	193	1
de12	Karlsruhe	0.77	5	0.75	5	0.63	8	174	7
de13	Freiburg	0.63	29	0.60	30	0.45	32	133	25
de14	Tübingen	0.72	13	0.69	13	0.55	13	162	8
de2	Bayern								
de21	Oberbayern	0.79	3	0.76	4	0.64	5	184	3
de22	Niederbayern	0.41	114	0.36	132	0.25	108	84	101
de23	Oberpfalz	0.55	54	0.51	57	0.36	58	116	38
de24	Oberfranken	0.44	97	0.40	111	0.25	112	87	92
de25	Mittelfranken	0.68	23	0.64	24	0.50	23	151	13
de26	Unterfranken	0.55	52	0.52	55	0.36	53	116	37
de27	Schwaben	0.56	48	0.52	52	0.37	51	118	36
de3	Berlin	0.74	11	0.71	10	0.57	10	147	17
de4	Brandenburg	0.47	84	0.43	93	0.28	95	82	106
de41	Brandenburg - Nordost								
de42	Brandenburg - Südwest								
de5	Bremen	0.53	60	0.49	65	0.34	70	96	72
de6	Hamburg	0.55	53	0.52	51	0.35	61	101	67
de7	Hessen								
de71	Darmstadt	0.69	16	0.66	15	0.50	22	142	19
de72	Gießen	0.56	49	0.53	49	0.36	56	107	51
de73	Kassel	0.41	119	0.36	131	0.22	135	72	133
de8	Mecklenburg-Vorpommern	0.37	127	0.34	144	0.22	133	70	144
de9	Niedersachsen								
de91	Braunschweig	0.76	7	0.72	9	0.63	6	178	5
de92	Hannover	0.56	50	0.52	54	0.35	64	105	60
de93	Lüneburg	0.38	126	0.34	142	0.20	147	70	142
de94	Weser-Ems	0.32	147	0.27	165	0.15	177	59	170
dea	Nordrhein-Westfalen								
dea1	Düsseldorf	0.49	74	0.45	86	0.28	94	94	74
dea2	Köln	0.69	19	0.66	20	0.50	21	141	21
dea3	Münster	0.41	117	0.37	126	0.22	138	76	119
dea4	Detmold	0.43	105	0.38	117	0.23	130	81	110
dea5	Arnsberg	0.43	103	0.39	114	0.23	127	80	111
deb	Rheinland-Pfalz								
deb1	Koblenz	0.38	125	0.34	143	0.20	148	71	138
deb2	Trier	0.41	115	0.37	124	0.22	137	71	139
deb3	Rheinhessen-Pfalz	0.66	26	0.62	27	0.47	27	142	20
dec	Saarland	0.44	96	0.40	108	0.26	105	83	105
ded	Sachsen								

ded1	Chemnitz	0.46	88	0.41	100	0.26	104	79	114
ded2	Dresden	0.69	18	0.66	17	0.50	19	133	24
ded3	Leipzig	0.57	43	0.54	45	0.40	42	103	63
dee	Sachsen-Anhalt								
dee1	Dessau	0.29	160	0.23	182	0.13	188	53	189
dee2	Halle	0.42	110	0.37	123	0.25	106	78	116
dee3	Magdeburg	0.35	137	0.30	160	0.20	150	66	151
def	Schleswig-Holstein	0.45	91	0.41	103	0.25	109	80	112
deg	Thüringen	0.53	59	0.49	67	0.33	76	94	76
ee	Estonia	0.38	124	0.42	97	0.27	102	80	113
gr	Greece								
gr1	Voreia Ellada								
gr11	Anatoliki Makedonia, Thraki	0.13	197	0.16	195	0.09	196	45	195
gr12	Kentriki Makedonia	0.27	164	0.32	148	0.21	146	64	156
gr13	Dytiki Makedonia	0.07	201	0.08	201	0.05	202	33	202
gr14	Thessalia	0.10	200	0.12	199	0.06	201	39	200
gr2	Kentriki Ellada								
gr21	Ipeiros	0.19	191	0.22	187	0.18	160	59	171
gr22	Ionia Nisia								
gr23	Dytiki Ellada	0.23	182	0.28	164	0.19	156	64	157
gr24	Stereia Ellada	0.17	192	0.23	184	0.16	173	58	176
gr25	Peloponnisos	0.10	199	0.13	198	0.09	195	50	192
gr3	Attiki	0.46	86	0.55	41	0.41	39	107	53
gr4	Nisia Aigaiou, Kriti								
gr41	Voreio Aigaio	0.04	202	0.02	202	0.06	200	35	201
gr42	Notio Aigaio	0.01	203	0.02	203	0.00	203	27	203
gr43	Kriti	0.26	174	0.30	155	0.24	122	74	124
es	Spain								
es1	Noroeste								
es11	Galicia	0.34	142	0.36	134	0.22	140	69	148
es12	Principado de Asturias	0.27	166	0.27	168	0.15	175	56	180
es13	Cantabria	0.27	163	0.27	167	0.17	168	58	174
es2	Noreste								
es21	Pais Vasco	0.55	55	0.59	34	0.43	33	113	41
es22	Comunidad Foral de Navarra	0.48	76	0.52	53	0.39	43	108	47
es23	La Rioja	0.23	181	0.23	181	0.13	189	53	187
es24	Aragón	0.45	90	0.48	74	0.33	71	92	82
es3	Comunidad de Madrid	0.61	31	0.65	22	0.50	20	125	30
es4	Centro (ES)								
es41	Castilla y León	0.35	135	0.37	127	0.22	136	70	141
es42	Castilla-la Mancha	0.17	194	0.16	194	0.08	198	43	197
es43	Extremadura	0.17	193	0.16	193	0.10	193	46	194
es5	Este								
es51	Cataluña	0.47	82	0.51	60	0.36	52	105	59
es52	Comunidad Valenciana	0.36	130	0.39	115	0.24	117	75	121
es53	Illes Balears	0.16	195	0.16	197	0.08	197	42	199
es6	Sur								
es61	Andalucia	0.26	169	0.27	169	0.15	179	55	183
es62	Región de Murcia	0.29	158	0.30	156	0.17	165	59	168
es63	Ciudad Autónoma de Ceuta (ES)								
es64	Ciudad Autónoma de Melilla (ES)								
es7	Canarias (ES)	0.23	183	0.23	183	0.14	183	53	186
fr	France								
fr1	Île de France	0.75	9	0.73	7	0.58	9	153	12
fr2	Bassin Parisien								
fr21	Champagne-Ardenne	0.32	146	0.29	162	0.15	174	58	173
fr22	Picardie	0.46	87	0.43	94	0.28	92	88	90
fr23	Haute-Normandie	0.41	118	0.38	118	0.24	114	81	107
fr24	Centre	0.46	85	0.44	88	0.27	99	86	97
fr25	Basse-Normandie	0.41	120	0.38	119	0.22	134	72	135
fr26	Bourgogne	0.36	129	0.33	145	0.19	151	69	147
fr3	Nord - Pas-de-Calais	0.34	140	0.31	153	0.17	163	61	165

fr4	Est								
fr41	Lorraine	0.40	121	0.38	121	0.23	132	74	126
fr42	Alsace	0.55	51	0.54	46	0.38	50	106	54
fr43	Franche-Comté	0.51	67	0.49	66	0.36	57	107	49
fr5	Ouest								
fr51	Pays de la Loire	0.42	106	0.40	110	0.24	118	74	123
fr52	Bretagne	0.51	66	0.49	68	0.31	80	92	81
fr53	Poitou-Charentes	0.34	141	0.31	154	0.17	167	62	163
fr6	Sud-Ouest								
fr61	Aquitaine	0.44	98	0.41	106	0.24	115	77	117
fr62	Midi-Pyrénées	0.61	30	0.59	32	0.43	35	118	35
fr63	Limousin	0.42	112	0.39	112	0.24	116	71	137
fr7	Centre-Est								
fr71	Rhône-Alpes	0.60	33	0.59	35	0.42	37	123	31
fr72	Auvergne	0.42	111	0.39	113	0.23	129	83	104
fr8	Méditerranée								
fr81	Languedoc-Roussillon	0.44	93	0.41	99	0.28	93	86	95
fr82	Provence-Alpes-Côte d'Azur	0.49	75	0.46	79	0.29	86	89	89
fr83	Corse	0.26	168	0.23	186	0.16	170	53	188
fr9	French overseas departments (FR)								
ie	Ireland								
ie01	Border, Midlands and Western	0.35	133	0.33	146	0.24	120	74	125
ie02	Southern and Eastern	0.48	77	0.48	72	0.36	54	97	70
it	Italy								
itc	Nord Ovest								
itc1	Piemonte	0.49	73	0.51	59	0.35	60	110	45
itc2	Valle d'Aosta/Vallée d'Aoste	0.26	170	0.26	174	0.14	184	63	161
itc3	Liguria	0.44	94	0.46	78	0.29	89	85	100
itc4	Lombardia	0.49	71	0.51	56	0.35	65	106	56
itd	Nord Est								
itd1	Provincia Autonoma Bolzano-Bozen								
itd2	Provincia Autonoma Trento								
itd3	Veneto	0.40	122	0.41	105	0.26	103	83	103
itd4	Friuli-Venezia Giulia	0.44	95	0.46	77	0.30	84	92	83
itd5	Emilia-Romagna	0.47	81	0.49	64	0.33	72	102	64
ite	Centro (IT)								
ite1	Toscana	0.43	104	0.44	87	0.28	96	84	102
ite2	Umbria	0.42	107	0.44	90	0.29	90	81	109
ite3	Marche	0.35	132	0.36	133	0.21	141	70	143
ite4	Lazio	0.57	44	0.60	31	0.45	31	116	39
itf	Sud (IT)								
itf1	Abruzzo	0.42	109	0.43	92	0.27	101	81	108
itf2	Molise	0.27	165	0.26	171	0.17	166	58	175
itf3	Campania	0.31	152	0.31	152	0.19	155	65	153
itf4	Puglia	0.22	185	0.22	190	0.12	192	51	191
itf5	Basilicata	0.29	159	0.29	163	0.18	159	63	162
itf6	Calabria	0.20	188	0.19	192	0.12	191	48	193
itg	Isole (IT)								
itg1	Sicilia	0.25	177	0.25	179	0.14	182	55	182
itg2	Sardegna	0.23	184	0.22	188	0.13	186	53	185
cy	Cyprus	0.32	145	0.38	120	0.25	111	74	129
lv	Latvia	0.32	148	0.38	122	0.24	121	74	127
lt	Lithuania	0.33	143	0.39	116	0.25	110	76	120
lu	Luxembourg (Grand-Duché)	0.48	79	0.48	73	0.31	77	94	75
hu	Hungary								
hu1	Közép-Magyarország	0.60	34	0.65	21	0.49	24	126	29
hu2	Dunántúl								
hu21	Közép-Dunántúl	0.33	144	0.34	140	0.23	126	73	130
hu22	Nyugat-Dunántúl	0.25	176	0.25	175	0.17	164	59	169
hu23	Dél-Dunántúl	0.26	175	0.26	173	0.15	176	56	181
hu3	Alföld és Észak								
hu31	Észak-Magyarország	0.25	178	0.25	177	0.16	169	57	178

hu32	Észak-Alföld	0.26	173	0.26	172	0.14	180	58	177
hu33	Dél-Alföld	0.24	179	0.25	178	0.13	185	56	179
mt	Malta	0.31	149	0.37	125	0.23	123	74	122
nl	Netherlands								
nl1	Noord-Nederland								
nl11	Groningen	0.52	61	0.49	69	0.34	66	96	71
nl12	Friesland	0.35	136	0.30	158	0.18	157	64	155
nl13	Drenthe	0.38	123	0.34	139	0.22	139	72	136
nl2	Oost-Nederland								
nl21	Overijssel	0.52	64	0.48	71	0.31	78	94	78
nl22	Gelderland	0.58	39	0.54	43	0.38	46	107	50
nl23	Flevoland	0.59	36	0.56	39	0.43	36	110	44
nl3	West-Nederland								
nl31	Utrecht	0.66	25	0.62	26	0.49	26	122	32
nl32	Noord-Holland	0.58	40	0.53	48	0.38	49	103	61
nl33	Zuid-Holland	0.58	38	0.54	44	0.38	45	105	57
nl34	Zeeland	0.36	131	0.32	149	0.21	145	71	140
nl4	Zuid-Nederland								
nl41	Noord-Brabant	0.68	20	0.66	19	0.57	12	183	4
nl42	Limburg (NL)	0.53	58	0.50	62	0.34	69	103	62
at	Austria								
at1	Ostösterreich								
at11	Burgenland	0.29	157	0.26	170	0.15	178	59	172
at12	Niederösterreich	0.37	128	0.35	137	0.21	144	74	128
at13	Wien	0.68	24	0.68	14	0.51	17	138	22
at2	Südösterreich								
at21	Kärnten	0.43	102	0.41	101	0.25	107	87	93
at22	Steiermark	0.58	41	0.57	38	0.40	40	122	33
at3	Westösterreich								
at31	Oberösterreich	0.45	92	0.43	95	0.27	98	94	77
at32	Salzburg	0.41	116	0.40	109	0.24	119	79	115
at33	Tirol	0.47	83	0.46	81	0.29	88	93	80
at34	Vorarlberg	0.43	99	0.42	96	0.29	91	101	68
pl	Poland								
pl1	Centralny								
pl11	Lódzkie	0.29	155	0.34	138	0.21	143	70	146
pl12	Mazowieckie	0.51	65	0.59	33	0.47	28	121	34
pl2	Poludniowy								
pl21	Malopolskie	0.35	134	0.41	102	0.27	100	85	99
pl22	Slaskie	0.29	156	0.34	141	0.21	142	68	150
pl3	Wschodni								
pl31	Lubelskie	0.27	161	0.32	150	0.19	153	64	158
pl32	Podkarpackie	0.21	187	0.25	176	0.16	171	65	152
pl33	Swietokrzyskie								
pl34	Podlaskie								
pl4	Pólnocno-Zachodni	0.26	172	0.30	159	0.18	162	62	164
pl41	Wielkopolskie								
pl42	Zachodniopomorskie								
pl43	Lubuskie								
pl5	Poludniowo-Zachodni	0.31	151	0.37	130	0.23	124	72	132
pl51	Dolnoslaskie								
pl52	Opolskie								
pl6	Pólnocny	0.27	162	0.32	151	0.19	152	64	154
pl61	Kujawsko-Pomorskie								
pl62	Warminsko-Mazurskie								
pl63	Pomorskie								
pt	Portugal								
pt1	Continente (PT)								
pt11	Norte	0.22	186	0.27	166	0.16	172	60	167
pt15	Algarve	0.19	190	0.23	185	0.14	181	64	159
pt16	Centro (PT)	0.31	153	0.37	128	0.25	113	89	88
pt17	Lisboa	0.42	108	0.50	63	0.39	44	95	73

pt18	Alentejo	0.13	196	0.16	196	0.10	194	45	196
pt2	Região Autónoma dos Açores (PT)								
pt3	Região Autónoma da Madeira (PT)								
si	Slovenia	0.52	63	0.51	58	0.34	67	99	69
sk	Slovakia								
sk01	Bratislavský kraj	0.66	27	0.77	2	0.69	2	160	10
sk02	Západné Slovensko	0.26	171	0.29	161	0.19	154	69	149
sk03	Stredné Slovensko	0.27	167	0.30	157	0.18	161	63	160
sk04	Východné Slovensko	0.19	189	0.21	191	0.12	190	52	190
fi	Finland								
fi1	Manner-Suomi	0.71	14	0.64	25	0.49	25	138	23
fi13	Itä-Suomi	0.49	70	0.42	98	0.28	97	85	98
fi18	Etelä-Suomi	0.78	4	0.71	11	0.57	11	155	11
fi19	Länsi-Suomi	0.65	28	0.58	36	0.43	34	128	27
fi1a	Pohjois-Suomi	0.68	22	0.60	29	0.45	30	131	26
fi2	Åland	0.30	154	0.22	189	0.18	158	61	166
se	Sweden								
se01	Stockholm	0.90	1	0.79	1	0.71	1	190	2
se02	Östra Mellansverige	0.74	10	0.65	23	0.52	16	148	15
se04	Sydsverige	0.76	8	0.66	16	0.55	14	160	9
se06	Norra Mellansverige	0.57	45	0.47	76	0.35	62	105	58
se07	Mellersta Norrland	0.50	68	0.41	104	0.31	79	92	84
se08	Övre Norrland	0.57	46	0.47	75	0.36	59	106	55
se09	Småland med öarna	0.54	57	0.45	84	0.35	63	101	66
se0a	Västsverige	0.83	2	0.73	8	0.63	7	177	6
uk	United Kingdom								
ukc	North East	0.48	78	0.44	89	0.29	85	86	94
ukd	North West	0.54	56	0.50	61	0.34	68	102	65
uke	Yorkshire and The Humber	0.49	72	0.45	83	0.30	83	90	87
ukf	East Midlands	0.57	47	0.53	50	0.36	55	107	52
ukg	West Midlands	0.57	42	0.54	47	0.38	47	108	48
ukh	Eastern	0.69	17	0.66	18	0.50	18	147	18
uki	London	0.59	35	0.56	40	0.41	38	112	42
ukj	South East	0.72	12	0.69	12	0.54	15	150	14
ukk	South West	0.58	37	0.54	42	0.38	48	109	46
ukl	Wales	0.48	80	0.43	91	0.30	82	86	96
ukm	Scotland	0.45	89	0.40	107	0.33	73	92	85
ukn	Northern Ireland	0.41	113	0.37	129	0.23	131	72	134

### Annex 3. RIS 2006 data

	Relative to EU	HRSTC					LIFE-LONG LEARNING					MED/HI-TECH MANUF.					HI-TECH SERVICES					PUBLIC R&D					BUSINESS R&D					PATENTS				
		T-4	T-3	T-2	T-1	T	T-4	T-3	T-2	T-1	T	T-4	T-3	T-2	T-1	T	T-4	T-3	T-2	T-1	T	T-4	T-3	T-2	T-1	T	T-4	T-3	T-2	T-1	T	T-4	T-3	T-2	T-1	T
be	Belgium	130	130	128	133	135	95	79	79	85	82	94	97	98	94	99	118	130	129	124	117	86	85	83	85	82	113	122	118	116	116	105	101	107	114	113
be1	Région de Bruxelles-Capitale	144	146	137	153	169	116	99	92	85	89	32	35	44	46	53	156	177	174	119	126						51	52	50	52	55	90	129	117	118	110
be2	Vlaams Gewest	131	126	125	134	132	109	86	89	98	92	114	116	119	111	119	114	123	128	134	123						133	154	145	136	137	120	104	110	123	132
be3	Région Wallonne	126	132	130	125	130	64	60	56	62	62	69	75	69	74	69	115	130	118	105	102						115	122	118	121	116	82	87	98	97	80
cz	Czech Republic	68	68	70	69	68	64	59	75	75	75	132	132	131	131	128	92	102	95	98	99	68	72	74	65	63	60	59	60	60	65	9	8	8	8	9
cz01	Praha	162	153	174	160	162	125	111	157	157	157	62	61	56	56	56	227	227	210	210	210	157	157	157	157	157	45	45	45	45	45	21	24	21	16	19
cz02	Strední Cechy	49	46	45	54	39	46	43	63	63	63	152	160	163	163	163	81	93	98	98	98	45	45	45	45	45	256	256	256	256	256	7	6	3	6	4
cz03	Jihozápad	62	55	61	57	50	50	43	52	52	52	163	156	156	156	156	70	77	77	77	77	48	48	48	48	48	27	27	27	27	27	10	7	1	9	5
cz04	Severozápad	36	37	41	40	42	53	58	84	84	84	95	94	96	96	96	63	75	61	61	61	3	3	3	3	3	19	19	19	19	19	0	3	3	1	1
cz05	Severovýchod	48	55	48	50	53	56	54	48	48	48	181	168	170	170	170	85	90	70	70	70	19	19	19	19	19	56	56	56	56	56	10	9	10	7	14
cz06	Jihovýchod	72	78	76	71	80	71	60	86	86	86	126	130	146	146	146	98	97	99	99	99	81	81	81	81	81	39	39	39	39	39	11	7	9	10	11
cz07	Strední Morava	57	57	53	62	62	54	49	51	51	51	160	161	156	156	156	45	62	52	52	52	36	36	36	36	36	56	56	56	56	56	7	7	9	8	6
cz08	Moravskoslezsko	58	61	60	58	55	53	49	57	57	57	105	115	90	90	90	52	87	84	84	84	19	19	19	19	19	35	35	35	35	35	4	4	5	10	5
dk	Denmark	176	174	173	166	158	284	261	239	244	258	87	92	92	100	92	122	145	146	150	164	114	112	115	117	109	142	131	123	110	115	162	164	164	152	156
de	Germany	111	111	105	111	114	82	69	77	70	69	164	167	166	161	160	100	107	103	97	98	110	110	109	111	109	137	137	141	138	133	221	224	227	228	232
de1	Baden-Württemberg	121	124	114	124	124	94	76	85	78	73	278	272	268	259	262	105	111	112	115	113	121	121	121	123	123	244	244	244	250	250	448	437	405	406	423
de11	Stuttgart	123	121	117	126	127	91	72	85	80	75	325	311	311	301	302	105	103	110	112	116	66	66	66	70	70	351	351	351	360	360	547	562	523	504	503
de12	Karlsruhe	115	126	118	133	133	92	77	85	84	79	255	250	240	242	246	142	140	146	158	156	222	222	222	224	224	176	176	176	157	157	407	396	350	344	393
de13	Freiburg	125	121	103	103	109	99	79	93	67	65	225	231	218	202	211	77	99	94	87	92	109	109	109	105	105	98	98	104	104	354	319	316	341	367	
de14	Tübingen	124	131	113	129	123	98	79	77	75	69	273	268	274	260	255	83	99	88	88	69	110	110	110	112	112	243	243	243	285	285	400	365	333	359	357
de2	Bayern	109	105	103	110	115	82	63	68	63	64	209	205	206	200	194	104	110	112	108	113	90	90	90	92	92	191	191	191	185	185	347	359	378	364	378
de21	Oberbayern	141	137	128	135	145	88	65	73	71	73	202	194	203	187	184	144	161	164	158	159	140	140	140	153	153	294	294	294	308	308	497	559	598	581	623
de22	Niederbayern	79	73	80	83	87	62	48	50	43	47	228	238	228	233	190	59	68	60	52	69						27	27	27	31	31	130	141	144	147	141
de23	Oberpfalz	97	84	74	85	86	76	62	60	53	58	207	194	194	191	186	73	77	80	84	85	58	58	58	56	56	149	149	149	113	113	288	286	312	292	301
de24	Oberfranken	77	75	79	98	105	84	57	57	58	50	174	187	173	168	158	56	67	70	68	80	46	46	46	48	48	75	75	75	67	67	193	172	184	187	191
de25	Mittelfranken	105	95	108	116	110	83	63	69	60	75	222	210	206	210	217	126	121	110	106	109	87	87	87	79	79	208	208	208	172	172	407	385	397	381	353
de26	Unterfranken	90	92	91	97	94	84	64	65	58	52	219	228	228	224	215	67	71	81	78	91	85	85	85	83	83	124	124	124	94	94	283	296	285	259	267
de27	Schwaben	95	100	91	92	103	82	69	82	74	62	218	202	212	207	207	87	80	88	80	85						81	81	81	77	77	266	224	247	234	251
de3	Berlin	154	155	152	156	167	123	113	127	114	107	84	89	86	93	89	141	152	160	140	139	284	284	284	271	271	183	183	183	154	154	152	148	160	146	146
de4	Brandenburg	127	126	123	127	145	86	78	72	68	74	76	84	71	65	65	79	106	103	83	75	140	140	140	155	155	44	44	44	46	46	66	59	57	52	58
de41	Brandenburg - Nordost						85	85	85	85	85	84	84	71	65	65	106	106	103	83	75	64	64	64	97	97	43	43	43	40	40	47	51	51	42	53
de42	Brandenburg - Südwest						87	87	87	87												199	199	199	200	200	44	44	44	50	50	82	67	67	60	62
de5	Bremen	98	89	88	93	93	93	88	95	85	84	141	141	138	139	129	96	118	118	98	98	164	164	164	159	159	84	84	84	88	88	48	83	66	75	72
de6	Hamburg	125	127	113	134	128	93	90	91	99	113	77	96	93	98	83	140	141	132	111	118	109	109	109	111	111	62	62	62	90	90	173	178	157	146	157
de7	Hessen	123	128	108	117	124	87	77	90	72	73	173	186	185	182	173	133	137	129	134	144	69	69	69	67	67	158	158	158	172	172	238	245	272	271	299
de71	Darmstadt	135	143	119	131	137	89	83	89	74	77	180	198	197	186	176	162	164	158	167	172	66	66	66	58	58	202	202	202	223	223	306	313	360	353	390
de72	Gießen	109	108	92	101	113	101	75	106	79	83	153	156	142	160	153	88	96	89	98	111	137	137	137	147	147	64	64	64	64	64	184	187	194	192	224
de73	Kassel	100	96	88	85	90	69	62	83	62	53	165	173	182	189	178	79	84	70	57	82	33	33	33	36	36	41	41	41	39	39	78	89	82	101	96

	Relative to EU	HRSTC					LIFE-LONG LEARNING					MED/HI-TECH MANUF.					HI-TECH SERVICES					PUBLIC R&D					BUSINESS R&D					PATENTS				
		T-4	T-3	T-2	T-1	T	T-4	T-3	T-2	T-1	T	T-4	T-3	T-2	T-1	T	T-4	T-3	T-2	T-1	T	T-4	T-3	T-2	T-1	T	T-4	T-3	T-2	T-1	T	T-4	T-3	T-2	T-1	T
de8	Mecklenburg-Vorpommern	112	108	109	118	109	100	77	66	58	53	45	56	68	54	54	60	67	73	91	88	149	149	149	136	136	14	14	14	9	9	28	33	33	31	24
de9	Niedersachsen	94	94	90	92	97	69	58	62	56	57	161	161	158	155	154	86	82	75	75	76	104	104	104	102	102	143	143	143	134	134	139	141	141	175	170
de91	Braunschweig	91	102	87	90	98	76	69	90	70	85	256	278	256	256	260	97	123	93	77	67	278	278	278	261	261	417	417	417	373	373	205	191	197	322	300
de92	Hannover	106	108	98	102	114	71	62	53	51	52	150	151	139	137	132	110	92	102	89	103	100	100	100	92	92	119	119	119	114	114	170	184	174	193	185
de93	Lüneburg	87	88	97	94	97	72	51	47	57	40	141	122	124	112	118	91	83	65	65	73	18	18	18	29	29	33	33	33	29	29	108	118	120	127	147
de94	Weser-Ems	89	81	79	83	80	61	51	63	49	53	122	121	135	134	128	54	48	49	70	61	30	30	30	30	30	24	24	24	27	27	87	85	86	90	83
dea	Nordrhein-Westfalen	96	99	93	99	97	74	64	75	68	68	133	142	146	142	146	97	102	98	86	90	99	99	99	94	94	87	87	87	94	94	199	209	218	227	216
dea1	Düsseldorf	90	92	87	91	96	70	59	69	71	63	136	134	139	134	143	102	100	114	95	85	54	54	54	53	53	93	93	93	93	93	213	230	244	275	266
dea2	Köln	119	125	109	116	111	86	66	79	70	79	144	155	157	154	163	138	136	123	107	117	212	212	212	202	202	140	140	140	163	163	274	277	286	283	267
dea3	Münster	95	94	104	90	92	75	73	86	64	67	116	139	144	129	127	65	78	77	74	81	69	69	69	65	65	37	37	37	35	35	147	153	161	156	153
dea4	Detmold	91	91	86	104	94	72	65	80	67	74	121	140	133	134	137	73	80	75	56	71	45	45	45	42	42	69	69	69	62	62	171	191	187	194	175
dea5	Arnsberg	81	86	81	93	86	68	62	70	63	60	133	140	153	152	147	78	92	71	74	80	76	76	76	77	77	52	52	52	58	58	143	150	163	163	154
deb	Rheinland-Pfalz	108	104	93	100	97	67	58	73	65	57	171	171	176	173	181	94	122	105	95	83	73	73	73	68	68	120	120	120	145	145	230	220	242	250	252
deb1	Koblenz	95	88	86	86	86	57	49	56	56	56	139	137	142	142	142	86	108	96	96	96	21	21	21	12	12	40	40	40	62	62	127	129	133	152	155
deb2	Trier	108	93	88	88	88	91	71	82	82	82	83	76	76	76	76	78	110	110	110	110	70	70	70	73	73	48	48	48	26	26	55	69	73	71	67
deb3	Rheinhesen-Pfalz	118	117	100	100	100	69	61	83	83	83	219	221	225	225	225	104	136	117	117	117	109	109	109	105	105	188	188	188	226	226	353	327	367	369	373
dec	Saarland	82	78	75	77	89	53	41	67	76	75	160	142	138	129	125	103	91	113	71	76	94	94	94	91	91	30	30	30	30	30	133	117	110	125	131
ded	Sachsen	136	134	129	129	136	90	69	78	72	74	123	124	113	112	113	97	99	80	72	65	187	187	187	186	186	101	101	101	96	96	77	78	79	69	64
ded1	Chemnitz	117	117	108	112	122	65	59	60	62	60	145	149	135	129	126	72	71	60	52	50	90	90	90	97	97	76	76	76	74	74	45	36	44	45	45
ded2	Dresden	148	148	149	145	149	103	74	89	81	88	124	125	111	116	120	104	103	85	87	65	257	257	257	255	255	152	152	152	146	146	135	141	139	115	106
ded3	Leipzig	147	138	129	128	136	105	75	88	74	71	87	87	85	83	81	123	134	102	79	88	207	207	207	202	202	56	56	56	50	50	34	39	37	31	26
dee	Sachsen-Anhalt	104	106	110	113	112	54	46	52	47	53	99	108	105	95	95	51	65	64	70	73	139	139	139	126	126	27	27	27	35	35	37	44	37	35	37
dee1	Dessau	85	89	101	107	102	55	32	48	48	40	106	129	117	121	101	65	60	60	60	60	19	19	19	11	11	40	40	40	48	48	31	37	21	19	26
dee2	Halle	109	111	121	113	119	61	55	54	48	58	108	110	113	94	92	48	71	71	73	73	187	187	187	182	182	33	33	33	41	41	49	56	43	51	57
dee3	Magdeburg	110	109	107	116	112	48	46	53	45	56	91	97	95	85	94	46	63	64	73	87	152	152	152	127	127	17	17	17	26	26	30	39	41	31	28
def	Schleswig-Holstein	93	94	88	97	97	81	74	75	65	63	103	107	111	109	117	95	100	96	97	96	93	93	93	97	97	42	42	42	37	37	109	126	110	110	120
deg	Thüringen	129	124	123	128	135	83	69	74	70	67	127	133	131	109	115	73	81	67	56	49	142	142	142	123	123	88	88	88	65	65	79	81	76	63	62
ee	Estonia	100	106	119	109	113	71	76	71	72	86	75	51	50	70	61	72	75	89	104	93	75	72	73	80	70	19	20	11	14	9	5	8	7	7	4
gr	Greece	100	93	92	89	89	20	34	15	15	13	33	31	32	32	32	56	56	54	52	53	73	73	73	73	73	16	16	16	16	16	7	7	5	5	7
gr1	Voreia Ellada	91	87	85	84	78	19	31	14	15	11	24	26	20	24	24	37	36	36	36	34	61	61	61	61	61	7	7	7	7	7	3	2	2	4	4
gr11	Anatoliki Makedonia, Thraki	61	67	66	61	62	15	45	14	14	14	18	13	13	13	13	37	28	28	28	28	65	65	65	65	65	9	9	9	9	9	2	2	2	2	2
gr12	Kentriki Makedonia	104	94	93	90	85	25	30	18	19	14	34	34	25	32	31	41	46	48	43	45	77	77	77	77	77	8	8	8	8	8	3	4	4	6	7
gr13	Dytiki Makedonia	80	71	76	82	74						11	15	15	15	15	40	33	33	33	33	11	11	11	11	11	1	1	1	1	1	3	3	3	3	3
gr14	Thessalia	86	90	79	85	74	11	27	27	27	27	9	21	20	20	19	29	18	18	18	18	36	36	36	36	36	5	5	5	5	5	4	1	1	2	1
gr2	Kentriki Ellada	75	68	65	63	71	9	22	10	9	7	25	18	20	20	17	40	30	29	40	40	47	47	47	47	47	16	16	16	16	16	3	3	3	2	1
gr21	Ipeiros	93	89	84	79	80	28	28	28	28	28	4	10	10	10	10	38	39	39	39	39	130	130	130	130	130	2	2	2	2	2	1	5	5	1	2
gr22	Ionia Nisia	60	59	67	64	82						4	3	3	3	3	25	18	18	18	18	18	18	18	18	0	0	0	0	0						
gr23	Dytiki Ellada	81	74	63	61	73	15	27	19	14	14	19	24	17	21	17	47	41	38	39	40	126	126	126	126	126	9	9	9	9	9	5	4	6	3	3
gr24	Stereia Ellada	62	54	42	52	62	25	25	25	25	25	59	25	44	47	35	35	23	23	23	23	5	5	5	5	5	14	14	14	14	14	6	4	4	4	2

	Relative to EU	HRSTC					LIFE-LONG LEARNING					MED/HI-TECH MANUF.					HI-TECH SERVICES					PUBLIC R&D					BUSINESS R&D					PATENTS					
		T-4	T-3	T-2	T-1	T	T-4	T-3	T-2	T-1	T	T-4	T-3	T-2	T-1	T	T-4	T-3	T-2	T-1	T	T-4	T-3	T-2	T-1	T	T-4	T-3	T-2	T-1	T	T-4	T-3	T-2	T-1	T	
gr25	Peloponnisos	75	66	76	67	67	13	13	13	13	13	23	15	15	15	15	41	22	22	22	22	22	3	3	3	3	3	35	35	35	35	35	0	3	3	3	3
gr3	Attiki	126	120	118	110	111	27	46	19	22	19	50	48	54	50	51	87	94	85	75	79	95	95	95	95	95	27	27	27	27	27	14	13	9	9	13	
gr4	Nisia Aigaioi, Kriti	86	68	66	63	63	16	21	9	9	11	9	12	12	12	12	32	42	42	42	42	83	83	83	83	83	2	2	2	2	2	8	4	3	3	1	
gr41	Voreio Aigaio	90	64	61	58	61						10	10	10	10	10	41	90	90	90	90	32	32	32	32	32	1	1	1	1	1	0	0	0	0	0	
gr42	Notio Aigaio	50	50	48	46	53						13	19	19	19	19	36	18	18	18	18	5	5	5	5	5	2	2	2	2	2	3	3	4	4	4	
gr43	Kriti	104	78	78	73	69	23	29	29	14	18	9	9	9	9	9	28	40	40	40	40	148	148	148	148	148	3	3	3	3	3	14	6	4	6	2	
es	Spain	107	102	105	102	97	52	54	58	59	54	71	76	78	79	77	76	75	77	81	74	65	66	64	64	63	44	38	40	38	41	23	21	19	19	18	
es1	Noroeste	88	85	84	78	72	55	52	56	51	44	64	73	76	67	65	57	65	49	39	43	65	67	64	55	54	22	17	20	16	19	8	8	4	5	7	
es11	Galicia	87	84	80	78	70	66	58	65	58	46	67	78	83	65	61	54	59	46	37	41	71	75	65	56	54	24	15	16	13	15	10	7	2	4	7	
es12	Principado de Asturias	87	82	95	77	81	42	51	45	45	43	37	44	45	56	56	71	84	56	43	56	58	58	65	50	46	19	23	33	21	21	5	10	8	7	7	
es13	Cantabria	91	92	87	85	68	29	27	31	28	37	95	97	94	98	107	51	57	52	39	39	48	49	53	56	57	17	17	10	18	39	5	10	4	8	5	
es2	Noreste	130	126	127	123	118	57	60	68	60	56	138	140	138	135	143	72	65	53	67	52	45	46	42	42	40	63	61	57	57	62	37	29	27	27	27	
es21	Pais Vasco	136	132	134	130	120	73	71	81	65	59	147	148	138	132	138	82	67	56	82	66	48	45	38	38	36	80	83	75	74	85	33	35	29	30	23	
es22	Comunidad Foral de Navarra	131	129	130	125	129	43	70	85	87	78	156	168	164	164	184	51	56	43	49	36	51	46	48	52	48	61	57	49	50	46	57	40	36	45	40	
es23	La Rioja	84	98	100	96	98	22	23	30	31	22	56	63	65	67	75	53	36	36	36	36	33	27	32	33	30	27	22	30	21	26	16	8	6	7	14	
es24	Aragón	130	120	116	115	112	44	46	46	45	48	134	129	141	143	148	69	73	54	54	38	39	49	47	48	48	38	29	33	36	34	38	19	25	17	32	
es3	Comunidad de Madrid	158	148	167	157	142	40	46	46	47	43	73	72	87	92	95	175	163	204	224	192	114	115	115	115	112	87	76	73	72	74	31	32	29	31	33	
es4	Centro (ES)	86	93	90	89	83	58	60	66	62	62	48	46	45	48	51	42	51	46	43	47	54	51	48	45	45	23	21	23	16	16	6	7	7	6	6	
es41	Castilla y León	97	104	98	98	93	71	70	79	71	75	71	71	63	73	81	47	59	57	49	57	55	55	58	58	54	35	34	21	20	14	10	10	9	9	6	
es42	Castilla-la Mancha	74	77	82	79	72	52	57	62	60	60	34	34	40	33	33	31	43	38	44	43	38	30	30	24	28	15	10	29	14	25	2	5	5	2	9	
es43	Extremadura	83	96	82	84	77	37	42	41	43	34	15	6	11	11	11	50	49	34	27	30	75	81	61	48	54	6	4	11	7	6	2	2	3	2	2	
es5	Este	106	95	100	103	98	49	52	55	60	54	88	103	104	108	95	66	64	70	75	71	64	60	56	55	57	48	40	45	41	43	40	37	36	34	31	
es51	Cataluña	119	101	106	111	107	32	37	37	42	36	120	147	151	154	131	79	79	85	87	83	59	55	55	55	58	69	59	61	59	60	54	51	47	45	41	
es52	Comunidad Valenciana	94	88	94	95	91	73	76	84	90	84	53	53	49	50	53	49	45	50	59	52	78	76	64	62	57	21	15	25	17	21	26	22	22	22	19	
es53	Illes Balears	73	76	86	81	66	60	51	54	47	43	22	17	14	25	14	46	45	49	60	62	30	31	30	30	31	4	2	2	3	5	3	8	15	6	8	
es6	Sur	89	87	85	81	83	51	52	57	61	58	36	38	34	31	33	51	52	49	46	48	57	61	65	65	63	17	15	19	16	18	9	8	6	6	5	
es61	Andalucía	89	86	82	79	81	49	50	56	59	57	33	36	31	31	34	51	52	51	48	50	59	66	67	68	67	17	13	18	15	18	9	8	6	6	5	
es62	Región de Murcia	88	84	100	94	98	62	63	64	66	59	53	50	52	33	28	49	54	41	37	35	52	51	61	56	52	17	24	25	22	18	9	8	10	8	10	
es63	Ciudad Autónoma de Ceuta (ES)	96	114	90	103	72	81	100	94	139	130	5	5	5	5	5	20	20	20	20	20																
es64	Ciudad Autónoma de Melilla (ES)	112	116	116	116	116						6	6	6	6	6	26	26	26	26	26																
es7	Canarias (ES)	78	84	84	68	75	72	73	85	83	67	11	7	13	10	13	50	49	39	45	46	67	58	56	59	67	11	10	9	6	5	7	4	10	6	5	
fr	France	110	109	120	118	114	77	79	36	36	36	95	104	100	103	103	120	116	125	124	125	121	121	123	120	121	110	110	109	113	115	107	108	106	109	112	
fr1	Île de France	159	158	175	169	167	89	92	44	45	45	79	86	83	92	95	226	192	241	228	209	154	154	159	159	164	185	185	185	202	199	220	233	229	244	253	
fr2	Bassin Parisien	88	86	96	93	90	75	74	33	32	33	119	124	118	123	123	78	80	68	73	77	40	40	41	35	36	79	79	77	77	79	65	66	69	71	73	
fr21	Champagne-Ardenne	97	58	80	83	84	71	72	28	29	35	64	77	56	64	66	68	63	38	58	75	30	30	29	21	22	32	32	31	29	33	51	45	54	57	52	
fr22	Picardie	80	71	92	82	86	70	66	34	25	36	161	132	114	131	124	108	53	61	57	52	28	28	26	23	22	117	117	76	77	82	57	64	63	64	81	
fr23	Haute-Normandie	78	86	115	118	92	70	74	33	31	33	161	173	166	150	154	60	100	68	77	76	33	33	32	29	28	90	90	107	117	116	78	77	76	92	80	
fr24	Centre	83	116	82	84	93	86	83	40	36	32	110	126	132	135	129	101	107	92	88	93	57	57	58	52	51	99	99	102	101	101	72	75	88	86	83	



	Relative to EU	HRSTC					LIFE-LONG LEARNING					MED/HI-TECH MANUF.					HI-TECH SERVICES					PUBLIC R&D					BUSINESS R&D					PATENTS					
		T-4	T-3	T-2	T-1	T	T-4	T-3	T-2	T-1	T	T-4	T-3	T-2	T-1	T	T-4	T-3	T-2	T-1	T	T-4	T-3	T-2	T-1	T	T-4	T-3	T-2	T-1	T	T-4	T-3	T-2	T-1	T	
fr25	Basse-Normandie	106	67	113	104	95	71	60	40	39	41	101	101	106	119	123	79	59	60	64	71	48	48	48	44	42	51	51	53	51	53	56	53	49	38	51	
fr26	Bourgogne	89	103	99	92	87	74	82	22	30	25	106	123	106	112	118	45	81	69	83	88	43	43	44	38	37	56	56	70	58	66	72	71	72	76	78	
fr3	Nord - Pas-de-Calais	95	98	93	87	84	79	72	30	28	35	72	108	92	92	94	40	89	87	83	78	57	57	55	48	45	25	25	27	30	32	32	36	36	38	35	
fr4	Est	95	86	105	104	101	81	88	32	35	37	154	160	167	164	164	78	103	88	87	76	84	84	83	73	73	69	69	72	74	76	96	84	88	95	88	
fr41	Lorraine	91	60	96	101	102	70	76	28	29	39	114	134	107	110	125	61	110	95	107	86	85	85	85	74	73	48	48	41	44	47	57	52	55	63	64	
fr42	Alsace	109	107	120	109	105	93	100	33	37	41	157	161	191	185	184	101	119	81	61	61	103	103	106	89	93	55	55	61	56	65	137	128	122	135	121	
fr43	Franche-Comté	77	103	102	102	90	83	93	39	45	29	234	200	255	238	213	68	68	85	85	81	43	43	41	35	33	137	137	148	164	157	114	83	100	99	86	
fr5	Ouest	103	95	110	106	101	76	82	35	34	27	91	112	97	102	105	93	91	90	89	103	69	69	68	59	61	61	61	66	63	62	66	64	60	50	55	
fr51	Pays de la Loire	108	113	106	102	101	74	77	31	30	26	95	112	102	108	116	93	95	82	83	103	49	49	50	47	46	57	57	60	59	56	50	51	46	47	55	
fr52	Bretagne	110	80	120	117	106	80	92	40	43	29	95	109	93	98	107	105	108	104	112	109	94	94	94	80	84	81	81	93	82	84	97	93	79	60	59	
fr53	Poitou-Charentes	79	78	97	92	91	74	75	31	24	24	77	116	94	98	78	76	48	81	55	89	57	57	56	47	49	34	34	28	36	35	43	38	53	39	46	
fr6	Sud-Ouest	109	97	114	112	113	77	77	36	41	46	75	74	83	83	83	120	89	121	129	143	125	125	129	159	160	111	111	107	102	104	58	57	55	54	61	
fr61	Aquitaine	96	89	100	96	103	74	80	31	36	45	58	71	75	74	74	123	82	107	116	132	70	70	68	62	63	92	92	87	85	83	41	39	36	36	45	
fr62	Midi-Pyrénées	118	111	140	136	128	79	79	42	47	48	87	69	99	98	99	127	105	144	153	167	213	213	221	305	309	153	153	149	140	146	83	83	81	77	86	
fr63	Limousin	127	75	85	93	98	82	61	43	37	37	96	109	54	65	63	85	60	103	98	103	40	40	47	35	33	37	37	36	38	46	37	38	39	39	39	
fr7	Centre-Est	99	112	133	128	120	83	83	38	37	36	119	111	115	113	114	102	122	111	108	120	115	115	112	103	106	142	142	133	129	133	172	168	156	160	167	
fr71	Rhône-Alpes	105	115	139	134	126	83	83	38	34	34	132	124	126	123	122	111	124	120	120	130	124	124	118	111	112	139	139	132	128	132	193	185	172	179	187	
fr72	Auvergne	75	99	101	103	96	85	82	36	47	40	63	57	60	65	75	59	115	65	50	72	75	75	77	67	67	156	156	137	133	139	80	95	89	80	81	
fr8	Méditerranée	105	110	96	102	97	63	68	33	30	39	49	60	49	47	44	112	119	107	105	120	154	154	159	155	151	73	73	70	64	86	68	68	69	71	66	
fr81	Languedoc-Roussillon	106	123	100	105	104	62	75	31	29	32	37	33	31	23	35	87	123	112	109	122	236	236	245	236	228	48	48	47	43	48	53	49	44	50	53	
fr82	Provence-Alpes-Côte d'Azur	106	104	95	102	95	66	66	32	31	45	56	77	58	59	49	123	123	104	105	119	125	125	127	123	122	87	87	83	76	107	79	81	86	86	76	
fr83	Corse	81	79	60	74	54						38	38	38	38	38	155	155	155	155	155	48	48	42	41	37	13	13	2	12	2	3	7	8	8	9	
fr9	French overseas departments (FR)						32	34	37	42	42																										
ie	Ireland	114	113	110	104	103	68	74	71	71	71	95	95	100	105	100	107	125	132	125	131	49	51	48	48	51	61	62	66	71	77	59	66	56	64	53	
ie01	Border, Midlands and Western	95	92	86	79	76	57	60	56	56	56	87	90	103	106	98	83	87	80	83	87	30	30	30	30	30	52	52	52	52	52						
ie02	Southern and Eastern	120	120	118	112	112	71	78	76	76	76	98	96	99	104	100	116	137	149	139	145	55	55	55	55	55	65	65	65	65	65						
it	Italy	63	59	60	58	56	70	51	58	60	64	109	112	108	106	109	92	94	93	93	95	82	82	82	80	82	43	43	43	42	45	80	59	58	58	57	
itc	Nord Ovest	67	61	63	59	54	65	45	52	54	61	154	165	159	161	171	99	113	113	104	112	50	50	50	52	51	77	77	77	78	82	114	107	108	109	105	
itc1	Piemonte	53	57	57	55	52	58	43	52	55	65	177	191	193	198	200	109	119	125	112	117	45	45	45	45	45	110	110	110	109	119	100	90	85	101	99	
itc2	Valle d'Aosta/Vallée d'Aoste	60	48	48	45	45	50	47	58	55	71	36	45	45	45	45	73	70	70	70	70	5	5	5	2	1	58	58	58	30	12	78	68	70	27	18	
itc3	Liguria	85	64	67	65	55	71	43	44	46	50	85	92	87	97	103	93	109	98	93	117	91	91	91	97	109	40	40	40	45	43	44	45	46	47	44	
itc4	Lombardia	71	63	66	60	56	67	47	54	56	61	156	167	157	157	170	96	110	110	103	109	45	45	45	47	46	70	70	70	70	72	133	126	130	124	119	
itd	Nord Est	59	58	61	60	57	75	62	70	71	77	148	149	140	132	128	75	71	78	88	76	59	59	59	58	60	30	30	30	29	31	110	105	103	102	97	
itd1	Provincia Autonoma Bolzano-Bozen	56	53	58	56	49	88	68	77	91	90	45	26	56	62	44	46	41	56	70	75																
itd2	Provincia Autonoma Trento	51	65	65	65	65	91	48	56	65	68	73	83	83	83	83	64	77	77	77	77																
itd3	Veneto	56	49	55	59	52	69	59	67	71	78	165	159	146	132	140	77	62	68	81	57	42	42	42	44	45	20	20	20	18	19	97	93	86	91	84	
itd4	Friuli-Venezia Giulia	52	57	54	50	55	90	63	74	76	79	130	141	145	135	127	76	70	101	110	80	92	92	92	88	90	45	45	45	45	57	79	76	73	97	87	
itd5	Emilia-Romagna	67	68	71	65	64	74	65	74	69	75	155	163	152	148	136	77	83	88	95	95	71	71	71	68	73	40	40	40	40	41	147	141	140	129	127	

	Relative to EU	HRSTC					LIFE-LONG LEARNING					MED/HI-TECH MANUF.					HI-TECH SERVICES					PUBLIC R&D					BUSINESS R&D					PATENTS				
		T-4	T-3	T-2	T-1	T	T-4	T-3	T-2	T-1	T	T-4	T-3	T-2	T-1	T	T-4	T-3	T-2	T-1	T	T-4	T-3	T-2	T-1	T	T-4	T-3	T-2	T-1	T	T-4	T-3	T-2	T-1	T
ite	Centro (IT)	76	68	65	64	64	80	57	63	63	66	84	75	73	76	75	127	132	116	118	126	148	148	148	148	151	34	34	34	34	34	44	43	40	37	42
ite1	Toscana	65	64	54	50	53	70	61	64	67	69	93	81	80	79	78	98	95	73	80	86	109	109	109	100	107	24	24	24	24	21	58	55	46	46	39
ite2	Umbria	83	63	69	55	64	84	59	74	64	66	79	81	83	83	95	94	70	53	73	97	117	117	117	120	112	13	13	13	10	9	26	21	29	23	22
ite3	Marche	69	56	64	65	65	67	53	56	53	65	110	119	109	122	105	66	91	52	64	59	58	58	58	55	52	11	11	11	9	9	56	48	51	42	51
ite4	Lazio	84	74	71	74	71	89	55	63	63	65	70	56	56	58	60	172	182	175	170	182	203	203	203	208	207	50	50	50	50	53	33	36	35	33	45
itf	Sud (IT)	55	53	54	53	53	67	46	54	57	59	59	61	60	60	62	76	65	71	67	70	80	80	80	76	79	20	20	20	17	16	9	11	10	10	11
itf1	Abruzzo	68	58	62	51	53	83	53	62	59	53	112	102	86	91	92	85	64	71	75	72	77	77	77	73	69	36	36	36	26	29	32	35	37	36	50
itf2	Molise	67	57	55	49	57	74	58	64	62	59	100	92	97	95	86	60	42	42	42	42	45	45	45	45	37	9	9	9	9	9	2	15	6	2	10
itf3	Campania	53	53	52	53	56	65	39	48	52	55	58	64	66	63	64	82	70	85	77	67	98	98	98	105	109	28	28	28	25	24	8	9	8	8	7
itf4	Puglia	47	52	56	52	50	58	46	56	59	62	49	48	46	48	57	65	56	51	49	71	74	74	74	61	66	11	11	11	10	10	7	8	7	8	7
itf5	Basilicata	45	42	46	37	36	65	63	63	60	68	95	116	130	138	129	68	55	55	55	55	97	97	97	59	49	14	14	14	12	7	7	9	7	14	15
itf6	Calabria	66	52	49	58	56	76	51	60	65	68	20	20	24	20	17	78	76	82	81	82	42	42	42	39	43	1	1	1	1	1	5	6	4	3	4
itg	Isole (IT)	53	52	56	54	49	62	46	53	53	53	36	39	39	33	33	63	65	62	65	66	97	97	97	89	97	14	14	14	9	12	8	8	8	8	10
itg1	Sicilia	56	54	60	56	50	57	38	45	45	45	36	40	36	29	33	61	70	60	61	69	98	98	98	88	97	17	17	17	11	15	9	8	8	9	10
itg2	Sardegna	47	47	45	47	44	74	69	77	75	75	34	39	48	42	32	65	52	66	77	59	95	95	95	94	94	5	5	5	5	5	7	7	8	7	10
cy	Cyprus	132	138	139	126	123	69	90	49	45	42	17	19	16	15	17	64	64	59	56	54	36	31	30	29	28	5	4	4	4	3	6	18	12	7	9
lv	Latvia	80	70	83	79	79	93	89	97	97	97	21	28	29	25	9	87	74	70	67	74	36	39	41	47	48	14	12	15	5	8	4	4	5	2	4
lt	Lithuania	102	97	98	145	145	65	44	40	48	37	41	46	39	46	45	58	53	52	61	72	81	72	70	74	81	9	16	11	2	1	2	2	2	1	0
lu	Luxembourg (Grand-Duché)	135	91	91	91	91	104	72	102	70	64	19	21	18	17	29	98	95	69	93	86	20	20	20	20	20	128	128	128	128	128	115	134	174	148	168
hu	Hungary	82	79	72	72	74	45	53	39	35	38	121	125	124	126	115	89	101	94	98	100	96	85	68	62	63	29	30	28	23	22	14	13	15	13	10
hu1	Közép-Magyarország	128	120	109	111	111	67	74	56	46	53	96	105	95	95	95	160	178	160	160	160	125	125	125	125	125	48	48	48	48	48	35	37	40	38	28
hu2	Dunántúl	66	66	62	64	65	39	50	34	34	36	168	169	178	178	178	55	75	62	62	62	45	45	45	45	45	14	14	14	14	14	5	3	5	3	3
hu21	Közép-Dunántúl	63	74	64	57	63	42	51	37	34	34	210	197	243	243	243	51	67	56	56	56	54	54	54	54	54	23	23	23	23	23	5	4	3	4	2
hu22	Nyugat-Dunántúl	66	66	64	67	69	34	40	32	36	42	188	197	183	183	183	51	73	62	62	62	23	23	23	23	23	11	11	11	11	11	3	2	7	3	3
hu23	Dél-Dunántúl	67	58	57	68	62	40	58	33	31	33	89	98	87	87	87	65	87	69	69	69	67	67	67	67	67	4	4	4	4	4	6	3	4	2	6
hu3	Alföld és Észak	61	58	55	51	54	33	40	31	28	30	104	103	101	101	101	57	61	68	68	68	61	61	61	61	61	13	13	13	13	13	7	5	5	5	4
hu31	Észak-Magyarország	60	52	58	52	52	37	42	34	32	33	155	131	138	138	138	71	72	81	81	81	26	26	26	26	26	6	6	6	6	6	3	3	4	2	5
hu32	Észak-Alföld	60	67	56	53	60	31	38	29	28	30	105	110	102	102	102	53	58	63	63	63	62	62	62	62	62	19	19	19	19	19	7	6	6	6	3
hu33	Dél-Alföld	64	54	51	49	49	32	41	29	26	26	57	71	66	66	66	49	53	61	61	61	88	88	88	88	88	13	13	13	13	13	12	6	5	5	3
mt	Malta	59	51	51	51	51	48	48	49	61	60	112	93	119	119	119	78	95	94	94	94	30	30	30	30	30	6	6	6	6	6	9	12	9	11	12
nl	Netherlands	142	142	130	130	133	182	180	209	211	190	48	61	59	62	64	126	123	115	126	134	113	113	120	133	133	83	83	90	94	91	182	207	182	167	165
nl1	Noord-Nederland	121	121	103	109	117	167	167	191	189	178	49	60	68	73	61	86	87	71	92	85	81	81	82	95	88	40	40	41	50	46	61	55	60	56	71
nl11	Groningen	134	134	127	135	156	187	194	218	218	208	42	51	64	62	43	99	105	98	119	122	175	175	175	209	30	30	30	30	109	81	63	67	58	90	
nl12	Friesland	119	119	98	99	110	156	146	171	169	169	43	55	75	75	62	75	80	80	66	59	7	7	6	9	9	51	51	55	44	44	40	45	48	56	51
nl13	Drenthe	107	107	81	91	81	157	161	185	180	154	68	77	63	84	79	84	75	78	92	75	9	9	9	9	9	48	48	48	48	48	65	58	69	53	75
nl2	Oost-Nederland	130	130	120	116	115	170	170	197	194	180	51	63	58	59	62	119	113	114	126	125	149	149	142	148	155	79	79	74	83	83	89	97	104	105	116
nl21	Overijssel	123	123	105	107	104	162	164	185	189	183	56	76	68	71	73	107	87	82	105	79	84	84	85	74	72	92	92	86	74	69	82	100	101	108	107
nl22	Gelderland	134	134	129	124	124	168	170	200	193	176	50	57	57	53	55	115	113	115	126	139	175	175	142	174	182	78	78	73	98	97	99	101	109	107	124
nl23	Flevoland	126	126	117	98	102	203	194	220	214	199	44	53	53	52	63	179	197	203	193	194	210	210	361	242	307	37	37	34	23	30	52	62	81	80	97

	Relative to EU	HRSTC					LIFE-LONG LEARNING					MED/HI-TECH MANUF.					HI-TECH SERVICES					PUBLIC R&D					BUSINESS R&D					PATENTS					
		T-4	T-3	T-2	T-1	T	T-4	T-3	T-2	T-1	T	T-4	T-3	T-2	T-1	T	T-4	T-3	T-2	T-1	T	T-4	T-3	T-2	T-1	T	T-4	T-3	T-2	T-1	T	T-4	T-3	T-2	T-1	T	
nl3	West-Nederland	159	159	149	150	154	196	191	223	228	204	33	39	39	40	44	144	148	135	149	166	137	137	147	170	167	57	57	62	69	69	105	99	111	106	107	
nl31	Utrecht	197	197	174	189	190	196	201	222	236	198	29	34	32	31	31	189	190	178	216	211	191	191	205	197	201	36	36	41	69	65	135	126	134	129	149	
nl32	Noord-Holland	174	174	161	158	158	205	189	226	232	214	21	34	28	27	37	137	142	119	134	180	113	113	132	133	136	72	72	83	80	68	97	88	106	95	95	
nl33	Zuid-Holland	142	142	137	138	144	192	191	224	228	200	38	41	44	48	51	144	146	143	147	152	146	146	148	202	199	53	53	59	62	72	108	106	111	111	107	
nl34	Zeeland	97	97	93	86	95	167	164	194	182	188	79	83	100	80	67	54	67	67	67	67	10	10	10	15	12	62	62	62	55	53	45	38	61	56	67	
nl4	Zuid-Nederland	126	126	114	112	112	171	170	200	199	173	76	106	100	107	110	110	98	92	94	96	60	60	58	52	46	190	190	194	183	172	490	613	463	408	378	
nl41	Noord-Brabant	132	132	119	117	114	175	172	204	204	174	75	103	99	103	102	117	99	103	100	109	57	57	55	44	39	224	224	220	196	184	658	838	618	536	497	
nl42	Limburg (NL)	113	113	102	101	107	164	166	193	187	169	77	113	102	114	129	93	96	69	80	67	67	67	64	70	61	112	112	133	153	147	139	146	143	145	135	
at	Austria	80	76	80	69	67	128	117	99	109	110	91	94	96	93	97	78	107	107	92	91	101	101	101	101	97	115	115	115	115	97	137	129	128	123	118	
at1	Ostösterreich	91	81	89	78	76	130	113	102	110	120	75	79	86	79	88	104	146	152	123	124	130	130	130	130	125	118	118	118	118	112	118	107	101	110	105	
at11	Burgenland	55	56	57	50	55	95	78	78	74	64	57	65	58	66	62	102	94	97	65	65	7	7	7	7	7	48	48	48	48	12	41	49	70	57	42	
at12	Niederösterreich	75	59	70	60	58	125	114	95	101	110	92	94	99	81	84	61	99	97	89	98	9	9	9	9	7	63	63	63	63	53	100	94	98	104	119	
at13	Wien	111	106	110	98	95	140	118	116	124	139	60	68	79	79	97	148	202	215	164	159	210	210	210	210	201	154	154	154	154	154	150	130	110	126	102	
at2	Südösterreich	72	67	72	59	57	124	101	74	86	84	107	99	98	97	108	66	86	81	67	67	125	125	125	125	112	161	161	161	161	114	142	120	127	117	96	
at21	Kärnten	70	61	63	57	57	112	103	72	99	73	108	91	95	119	123	51	67	81	68	72	38	38	38	38	31	127	127	127	127	76	120	89	104	119	81	
at22	Steiermark	73	70	76	60	57	129	100	74	80	89	107	103	100	87	101	72	95	80	67	65	164	164	164	164	149	177	177	177	177	132	153	134	138	116	103	
at3	Westösterreich	72	76	76	65	62	129	130	111	120	114	101	107	107	106	100	56	74	70	70	65	58	58	58	58	54	90	90	90	90	72	155	159	161	143	147	
at31	Oberösterreich	66	74	75	62	56	126	129	110	119	114	123	137	141	130	121	51	77	79	81	69	35	35	35	35	30	119	119	119	119	96	157	152	157	143	154	
at32	Salzburg	82	73	72	62	73	137	141	93	107	110	82	77	69	81	72	56	90	84	68	67	59	59	59	59	54	38	38	38	38	26	110	116	127	101	105	
at33	Tirol	74	79	79	67	64	126	118	111	115	102	69	73	75	82	71	66	62	53	59	66	125	125	125	125	127	76	76	76	76	67	131	135	107	111	105	
at34	Vorarlberg	72	84	76	73	65	135	139	140	154	143	107	103	94	100	118	52	62	46	48	48	13	13	13	13	4	101	101	101	101	75	260	298	326	264	266	
pl	Poland	76	73	66	65	68	56	50	55	57	57	71	71	71	71	71	64	64	64	64	64	67	61	64	62	60	10	18	20	24	24	3	2	2	2	2	
pl1	Centralny	92	88	81	79	85	61	60	66	73	73	58	58	58	58	58	100	100	100	100	100	141	141	141	141	141	10	10	10	10	10	7	4	5	3	3	
pl11	Lódzkie	73	71	59	61	80	56	49	47	52	52	48	48	48	48	48	56	56	56	56	56	75	75	75	75	75	8	8	8	8	8	4	2	4	2	2	
pl12	Mazowieckie	104	99	94	91	89	64	67	78	87	87	63	63	63	63	63	125	125	125	125	125	161	161	161	161	161	11	11	11	11	11	9	5	5	3	3	
pl2	Poludniowy	75	71	65	60	59	53	52	55	53	53	79	79	79	79	79	63	63	63	63	63	54	54	54	54	54	11	11	11	11	11	3	3	2	1	1	
pl21	Malopolskie	80	77	78	78	78	48	49	54	55	55	58	58	58	58	58	62	62	62	62	62	93	93	93	93	93	19	19	19	19	19	4	3	2	1	1	
pl22	Slaskie	73	67	56	47	44	56	54	56	51	51	94	94	94	94	94	64	64	64	64	64	33	33	33	33	33	7	7	7	7	7	2	2	2	1	1	
pl3	Wschodni	73	70	64	65	67	53	43	52	54	54	53	53	53	53	53	43	43	43	43	43	23	23	23	23	23	11	11	11	11	11	1	1	1	1	1	
pl31	Lubelskie	77	80	75	77	80	69	49	68	68	68	46	46	46	46	46	61	61	61	61	61	46	46	46	46	46	10	10	10	10	10	1	2	1	1	1	
pl32	Podkarpackie	71	62	56	62	63	38	37	41	41	41	73	73	73	73	73	40	40	40	40	40	9	9	9	9	9	27	27	27	27	27	2	1	1	1	1	
pl33	Swietokrzyskie	65	58	53	41	46	45	37	45	40	40	43	43	43	43	43	31	31	31	31	31																
pl34	Podlaskie	78	80	72	71	69	56	47	45	62	62	45	45	45	45	45	24	24	24	24	24																
pl4	Pólnocno-Zachodni	68	69	63	58	57	53	44	45	44	44	79	79	79	79	79	49	49	49	49	49	41	41	41	41	41	6	6	6	6	6	2	1	2	2	2	
pl41	Wielkopolskie	64	71	60	51	51	50	45	46	43	43	87	87	87	87	87	48	48	48	48	48	55	55	55	55	55	6	6	6	6	6	3	2	2	2	2	
pl42	Zachodniopomorskie	81	73	71	73	75	60	43	47	51	51	61	61	61	61	61	62	62	62	62	62																
pl43	Lubuskie	61	57	60	57	51	54	43	37	35	35	77	77	77	77	77	32	32	32	32	32																
pl5	Poludniowo-Zachodni	72	65	66	67	65	64	52	57	60	60	96	96	96	96	96	56	56	56	56	56	45	45	45	45	45	6	6	6	6	6	4	2	2	1	1	
pl51	Dolnoslaskie	76	66	71	73	66	68	56	63	67	67	90	90	90	90	90	50	50	50	50	50																

	Relative to EU	HRSTC					LIFE-LONG LEARNING					MED/HI-TECH MANUF.					HI-TECH SERVICES					PUBLIC R&D					BUSINESS R&D					PATENTS					
		T-4	T-3	T-2	T-1	T	T-4	T-3	T-2	T-1	T	T-4	T-3	T-2	T-1	T	T-4	T-3	T-2	T-1	T	T-4	T-3	T-2	T-1	T	T-4	T-3	T-2	T-1	T	T-4	T-3	T-2	T-1	T	
pl52	Opolskie	60	60	51	53	62	53	41	41	42	42	117	117	117	117	117	71	71	71	71	71												2	1	2	1	1
pl6	Północny	70	68	54	61	70	51	49	55	57	57	81	81	81	81	81	59	59	59	59	59	32	32	32	32	32		8	8	8	8	8	3	2	2	1	1
pl61	Kujawsko-Pomorskie	73	68	42	51	63	58	55	60	56	56	81	81	81	81	81	51	51	51	51	51												2	1	0	1	1
pl62	Warmińsko-Mazurskie	64	65	58	57	61	36	36	48	49	49	42	42	42	42	42	48	48	48	48	48												0	0	1	1	1
pl63	Pomorskie	72	71	65	76	84	54	52	55	64	64	107	107	107	107	107	75	75	75	75	75	42	42	42	42	42		7	7	7	7	7	5	3	5	2	2
pt	Portugal	73	73	73	73	73	47	37	38	43	45	51	48	48	51	52	41	47	45	43	38	87	87	87	80	80	21	21	21	13	13	4	4	4	4	3	
pt1	Continente (PT)	73	73	73	73	73	48	38	39	44	46	54	50	50	53	54	42	48	47	44	39	88	88	88	83	83	22	22	22	15	15	4	4	4	4	3	
pt11	Norte	56	56	56	56	56	44	33	30	36	36	52	49	44	51	48	26	34	29	28	24	66	66	66	56	56	13	13	13	13	13	4	3	5	3	2	
pt15	Algarve	64	64	64	64	64	55	38	34	43	49	4	1	1	1	1	33	23	23	23	23	42	42	42	55	55	56	56	56	5	5	1	4	2	1	6	
pt16	Centro (PT)	68	68	68	68	68	51	35	38	42	45	51	36	45	46	56	19	24	32	28	21	69	69	69	69	69	82	82	82	82	82	3	3	4	2	2	
pt17	Lisboa	107	107	107	107	107	54	45	51	56	59	66	72	73	73	70	92	102	95	88	78	124	124	124	124	124	1	1	1	1	1	4	8	5	8	5	
pt18	Alentejo	50	50	50	50	50	35	38	43	42	43	56	47	36	38	41	28	24	24	24	24	43	43	43	43	43	1	1	1	1	1	1	1	0	0	4	
pt2	Região Autónoma dos Açores (PT)											2	4	4	4	4	17	25	25	25	25	81	81	81	70	70	0	0	0	0	0	0	0	0	0	0	
pt3	Região Autónoma da Madeira (PT)	66	66	66	66	66						2	5	5	5	5	16	17	17	17	17	40	40	40	47	47	4	4	4	4	4	5	5	3	4	4	
si	Slovenia	101	98	82	78	87	179	152	111	97	99	123	135	135	125	124	75	86	72	82	82	90	99	95	97	100	73	71	66	64	62	38	22	27	27	22	
sk	Slovakia	64	65	64	61	59	48	43	113	113	113	125	121	120	97	98	69	82	87	92	96	30	31	33	38	40	30	34	35	34	45	6	3	5	4	4	
sk01	Bratislavský kraj	133	147	147	144	157	136	120	144	144	144	68	71	59	59	59	182	202	249	249	249	80	80	80	80	80	31	31	31	31	31	24	14	21	17	10	
sk02	Západné Slovensko	50	51	48	51	42	34	25	60	60	60	174	162	164	164	164	43	47	48	48	48	12	12	12	12	12	40	40	40	40	40	5	2	3	2	3	
sk03	Stredné Slovensko	62	57	56	46	46	56	61	194	194	194	105	95	101	101	101	58	71	65	65	65	7	7	7	7	7	31	31	31	31	31	3	1	4	2	3	
sk04	Východné Slovensko	55	51	54	51	49	21	14	94	94	94	105	116	112	112	112	55	73	73	73	73	22	22	22	22	22	14	14	14	14	14	2	2	4	2	3	
fi	Finland	155	157	161	161	161	253	242	229	228	233	99	103	108	107	103	137	150	146	134	143	149	145	148	155	140	194	191	195	181	166	228	257	258	268	252	
fi1	Manner-Suomi	155	157	162	162	162	253	242	230	229	234	100	104	108	107	104	137	151	146	134	143	152	148	152	156	142	195	194	197	183	168	229	258	258	269	253	
fi13	Itä-Suomi	123	125	124	124	124	213	211	196	197	215	54	62	64	60	57	99	112	102	102	84	141	127	121	132	112	56	51	46	50	47	68	67	60	59	75	
fi18	Etelä-Suomi	173	176	182	182	182	262	254	248	248	251	105	103	109	108	105	178	186	179	164	178	162	163	167	167	167	210	199	207	207	207	285	329	324	341	320	
fi19	Länsi-Suomi	141	143	149	149	149	248	237	219	217	221	115	129	128	130	126	84	114	111	90	112	125	118	123	123	123	192	215	213	213	213	234	253	249	256	249	
fi1a	Pohjois-Suomi	146	135	141	141	141	261	233	208	203	209	87	99	109	100	99	101	106	108	126	106	162	152	147	147	147	247	248	253	253	253	166	190	231	237	192	
fi2	Åland	177	177	177	177	177	247	226	226	226	226	6	6	6	6	6	63	77	77	77	77	13	13	14	0	0	5	6	9	5	2	43	43	145	78	55	
se	Sweden	162	163	166	160	160	356	363	230	231	287	103	106	106	111	113	142	156	161	157	167	143	143	143	138	128	263	263	263	226	226	216	240	273	266	260	
se01	Stockholm	212	216	220	210	210	366	375	228	242	304	64	68	70	76	83	238	259	271	254	273						347	347	347	313	313	312	366	451	449	454	
se02	Östra Mellansverige	150	151	152	152	152	346	359	231	234	282	130	139	144	145	150	130	143	153	156	145						221	221	221	204	204	210	222	261	229	249	
se04	Sydsverige	151	159	163	162	162	373	372	237	236	318	99	97	97	100	107	135	150	153	148	149						246	246	246	234	234	299	314	321	343	259	
se06	Norra Mellansverige	130	128	128	121	121	328	335	226	225	225	95	97	86	89	97	85	97	88	95	105						109	109	109	70	70	104	122	160	166	144	
se07	Mellersta Norrland	132	135	135	139	139	341	353	237	258	298	67	76	79	71	71	114	158	141	127	127						23	23	23	51	51	66	100	95	78	135	
se08	Övre Norrland	139	138	152	147	147	369	383	232	236	298	73	73	82	72	72	98	98	110	116	132						75	75	75	78	78	109	112	162	166	153	
se09	Småland med öarna	135	124	131	120	120	342	337	207	201	229	129	122	121	136	128	67	76	74	87	97						52	52	52	53	53	83	104	106	112	99	
se0a	Väst sverige	164	165	168	157	157	360	366	235	221	300	135	140	137	147	150	128	132	141	132	152						412	412	412	309	309	235	255	266	246	266	
uk	United Kingdom	120	119	121	119	119	243	274	281	277	266	83	94	98	103	105	130	139	138	145	142	89	89	89	89	93	101	101	98	103	103	95	95	95	97	94	
ukc	North East	101	105	88	96	96	237	245	254	248	230	103	116	129	131	135	105	97	97	143	108	56	56	56	56	55	30	29	42	45	52	48	48	48	49	65	

	Relative to EU	HRSTC					LIFE-LONG LEARNING					MED/HI-TECH MANUF.					HI-TECH SERVICES					PUBLIC R&D					BUSINESS R&D					PATENTS				
		T-4	T-3	T-2	T-1	T	T-4	T-3	T-2	T-1	T	T-4	T-3	T-2	T-1	T	T-4	T-3	T-2	T-1	T	T-4	T-3	T-2	T-1	T	T-4	T-3	T-2	T-1	T	T-4	T-3	T-2	T-1	T
ukd	North West	108	106	105	114	114	223	256	267	276	259	95	102	105	118	117	108	125	111	105	130	52	52	52	52	51	128	120	124	133	121	71	71	71	73	74
uke	Yorkshire and The Humber	115	104	105	103	103	244	265	273	266	255	69	74	82	83	89	92	118	98	104	104	71	71	71	71	66	37	33	36	38	39	81	81	81	89	78
ukf	East Midlands	111	95	101	99	99	234	260	266	254	257	105	121	116	124	117	107	102	122	123	112	61	61	61	61	58	131	121	127	121	122	73	73	73	87	90
ukg	West Midlands	107	98	104	103	103	237	267	268	276	263	123	152	153	165	156	127	127	132	121	122	71	71	71	71	72	68	63	61	81	86	95	95	95	99	105
ukh	Eastern	117	113	114	109	109	240	284	286	281	269	88	95	111	110	109	147	155	165	179	174	91	91	91	91	99	248	270	274	272	276	178	178	178	189	174
uki	London	146	147	161	155	155	278	308	325	327	308	38	41	36	39	40	179	185	192	215	188	89	89	89	89	90	37	30	35	35	34	122	122	122	120	117
ukj	South East	134	137	136	130	130	252	291	306	296	290	82	102	106	110	114	178	192	193	202	200	121	121	121	121	134	171	200	172	183	178	196	196	196	184	181
ukk	South West	116	127	120	121	121	244	270	291	298	293	86	94	102	105	119	116	142	127	120	113	88	88	88	88	101	127	106	96	106	119	62	62	62	65	56
ukl	Wales	113	129	114	117	117	239	271	262	231	228	95	96	96	97	114	95	69	83	87	95	77	77	77	77	72	37	29	33	49	33	19	19	19	19	16
ukm	Scotland	126	130	132	126	126	243	278	270	255	240	66	78	84	89	91	105	120	101	112	118	123	123	123	123	128	60	50	41	44	51	0	0	0	0	0
ukn	Northern Ireland	119	107	119	101	101	161	191	187	182	162	74	78	84	78	79	73	75	80	82	86	56	56	56	56	54	51	53	53	40	36	26	26	26	26	19

## Annex 4. RIS 2006 composite indicator scores

		RNSII					REUSII					RRSII				
		T-4	T-3	T-2	T-1	T	T-4	T-3	T-2	T-1	T	T-4	T-3	T-2	T-1	T
be	Belgium	0.59	0.54	0.53	0.52	0.50	0.58	0.61	0.59	0.58	0.59					
be1	Région de Bruxelles-Capitale	0.48	0.40	0.45	0.43	0.41	0.56	0.56	0.57	0.57	0.56	0.54	0.52	0.54	0.54	0.52
be2	Vlaams Gewest	0.59	0.57	0.55	0.49	0.52	0.63	0.67	0.64	0.62	0.64	0.62	0.64	0.61	0.59	0.61
be3	Région Wallonne	0.40	0.38	0.39	0.39	0.36	0.52	0.56	0.55	0.56	0.54	0.49	0.51	0.51	0.52	0.49
cz	Czech Republic	0.55	0.52	0.52	0.48	0.49	0.40	0.42	0.42	0.40	0.39					
cz01	Praha	1.00	0.95	0.99	0.85	0.89	0.62	0.64	0.65	0.61	0.63	0.72	0.72	0.73	0.67	0.70
cz02	Strední Cechy	0.54	0.57	0.51	0.47	0.49	0.42	0.47	0.44	0.42	0.41	0.45	0.50	0.46	0.43	0.43
cz03	Jihozápad	0.37	0.38	0.29	0.33	0.39	0.31	0.34	0.31	0.31	0.33	0.32	0.35	0.31	0.32	0.34
cz04	Severozápad	0.14	0.12	0.14	0.14	0.07	0.18	0.20	0.20	0.19	0.14	0.17	0.18	0.19	0.18	0.12
cz05	Severovýchod	0.39	0.32	0.33	0.38	0.38	0.32	0.32	0.32	0.34	0.33	0.34	0.32	0.32	0.35	0.34
cz06	Jihovýchod	0.62	0.57	0.56	0.47	0.52	0.43	0.44	0.43	0.40	0.40	0.48	0.47	0.47	0.41	0.43
cz07	Strední Morava	0.38	0.36	0.33	0.35	0.35	0.31	0.34	0.32	0.33	0.30	0.33	0.34	0.32	0.33	0.31
cz08	Moravskoslezsko	0.30	0.31	0.28	0.29	0.25	0.27	0.30	0.29	0.29	0.24	0.27	0.30	0.28	0.29	0.24
dk	Denmark	0.55	0.52	0.52	0.48	0.49	0.72	0.75	0.74	0.73	0.75	0.68	0.70	0.69	0.67	0.68
de	Germany	0.55	0.52	0.52	0.48	0.49	0.61	0.64	0.63	0.62	0.63					
de1	Baden-Württemberg	0.74	0.71	0.69	0.63	0.65										
de11	Stuttgart	0.77	0.74	0.72	0.63	0.67	0.78	0.81	0.79	0.76	0.80	0.78	0.79	0.77	0.73	0.77
de12	Karlsruhe	0.82	0.80	0.75	0.68	0.70	0.79	0.82	0.79	0.78	0.80	0.80	0.82	0.78	0.76	0.77
de13	Freiburg	0.57	0.52	0.56	0.53	0.54	0.62	0.63	0.65	0.65	0.66	0.61	0.60	0.63	0.62	0.63
de14	Tübingen	0.66	0.68	0.63	0.61	0.62	0.70	0.76	0.72	0.74	0.75	0.69	0.74	0.70	0.71	0.72
de2	Bayern	0.62	0.58	0.57	0.51	0.54										
de21	Oberbayern	0.84	0.79	0.77	0.68	0.70	0.82	0.84	0.82	0.80	0.82	0.82	0.82	0.80	0.77	0.79
de22	Niederbayern	0.30	0.25	0.25	0.24	0.26	0.45	0.47	0.46	0.46	0.46	0.41	0.41	0.41	0.40	0.41
de23	Oberpfalz	0.44	0.40	0.40	0.39	0.43	0.54	0.56	0.56	0.56	0.59	0.51	0.52	0.52	0.51	0.55
de24	Oberfranken	0.37	0.34	0.29	0.28	0.31	0.49	0.51	0.48	0.47	0.48	0.46	0.47	0.43	0.42	0.44
de25	Mittelfranken	0.62	0.57	0.58	0.51	0.57	0.66	0.68	0.69	0.66	0.71	0.65	0.65	0.66	0.62	0.68
de26	Unterfranken	0.48	0.45	0.47	0.42	0.44	0.56	0.59	0.60	0.58	0.59	0.54	0.56	0.57	0.54	0.55
de27	Schwaben	0.47	0.45	0.46	0.39	0.44	0.58	0.59	0.60	0.57	0.61	0.55	0.56	0.56	0.53	0.56
de3	Berlin	0.76	0.74	0.77	0.67	0.66	0.73	0.76	0.77	0.75	0.76	0.74	0.75	0.77	0.73	0.74
de4	Brandenburg	0.42	0.37	0.37	0.38	0.36	0.50	0.51	0.51	0.52	0.51	0.48	0.47	0.48	0.49	0.47
de41	Brandenburg - Nordost	0.37	0.34	0.32	0.33	0.33										
de42	Brandenburg - Südwest															
de5	Bremen	0.49	0.47	0.48	0.44	0.42	0.55	0.58	0.58	0.57	0.56	0.53	0.55	0.55	0.54	0.53
de6	Hamburg	0.57	0.53	0.48	0.47	0.46	0.59	0.62	0.58	0.59	0.59	0.59	0.60	0.55	0.56	0.55
de7	Hessen	0.63	0.58	0.57	0.53	0.53										
de71	Darmstadt	0.71	0.66	0.65	0.61	0.59	0.72	0.74	0.72	0.73	0.73	0.72	0.72	0.70	0.70	0.69
de72	Gießen	0.58	0.51	0.49	0.44	0.47	0.61	0.61	0.58	0.58	0.59	0.60	0.58	0.56	0.54	0.56
de73	Kassel	0.31	0.26	0.29	0.27	0.28	0.44	0.44	0.45	0.45	0.45	0.40	0.40	0.41	0.41	0.41
de8	Mecklenburg-Vorpommern	0.26	0.26	0.26	0.25	0.26	0.39	0.43	0.43	0.41	0.41	0.35	0.39	0.38	0.37	0.37
de9	Niedersachsen	0.45	0.41	0.40	0.38	0.41										
de91	Braunschweig	0.76	0.71	0.73	0.69	0.65	0.76	0.79	0.79	0.81	0.79	0.76	0.77	0.78	0.78	0.76
de92	Hannover	0.47	0.41	0.41	0.41	0.44	0.56	0.57	0.56	0.57	0.60	0.54	0.53	0.53	0.53	0.56
de93	Lüneburg	0.23	0.22	0.17	0.19	0.25	0.39	0.41	0.39	0.39	0.42	0.35	0.36	0.33	0.34	0.38
de94	Weser-Ems	0.20	0.19	0.15	0.13	0.18	0.36	0.40	0.37	0.34	0.37	0.32	0.35	0.31	0.29	0.32
dea	Nordrhein-Westfalen	0.47	0.44	0.44	0.40	0.40										
dea1	Düsseldorf	0.42	0.41	0.40	0.34	0.37	0.52	0.55	0.54	0.52	0.53	0.50	0.52	0.51	0.47	0.49
dea2	Köln	0.67	0.62	0.63	0.58	0.60	0.69	0.70	0.70	0.70	0.72	0.68	0.68	0.68	0.67	0.69
dea3	Münster	0.36	0.31	0.37	0.31	0.29	0.46	0.47	0.51	0.48	0.45	0.43	0.43	0.47	0.44	0.41
dea4	Detmold	0.37	0.32	0.33	0.31	0.30	0.47	0.49	0.49	0.48	0.47	0.44	0.44	0.45	0.44	0.43
dea5	Arnsberg	0.37	0.36	0.32	0.32	0.30	0.48	0.51	0.49	0.49	0.47	0.45	0.48	0.45	0.44	0.43
deb	Rheinland-Pfalz	0.47	0.47	0.47	0.43	0.43										
deb1	Koblenz	0.30	0.27	0.24	0.24	0.24	0.43	0.46	0.44	0.43	0.43	0.40	0.41	0.39	0.38	0.38
deb2	Trier	0.34	0.31	0.31	0.28	0.30	0.43	0.46	0.46	0.45	0.45	0.41	0.42	0.42	0.41	0.41
deb3	Rheinhesen-Pfalz	0.68	0.65	0.62	0.56	0.55	0.70	0.73	0.70	0.70	0.70	0.69	0.71	0.68	0.66	0.66
dec	Saarland	0.37	0.32	0.33	0.25	0.32	0.46	0.47	0.48	0.44	0.48	0.44	0.43	0.45	0.39	0.44
ded	Sachsen	0.49	0.46	0.48	0.46	0.49										
ded1	Chemnitz	0.34	0.31	0.29	0.31	0.33	0.46	0.48	0.47	0.49	0.50	0.43	0.44	0.43	0.44	0.46
ded2	Dresden	0.62	0.60	0.61	0.56	0.60	0.65	0.69	0.69	0.68	0.72	0.64	0.67	0.67	0.65	0.69
ded3	Leipzig	0.44	0.41	0.46	0.45	0.48	0.52	0.53	0.56	0.58	0.60	0.50	0.50	0.54	0.54	0.57
dee	Sachsen-Anhalt	0.31	0.27	0.26	0.24	0.23										
dee1	Dessau	0.12	0.13	0.11	0.09	0.13	0.32	0.36	0.35	0.33	0.34	0.27	0.30	0.29	0.27	0.29

		RNSII					REUSII					RRSII				
		T-4	T-3	T-2	T-1	T	T-4	T-3	T-2	T-1	T	T-4	T-3	T-2	T-1	T
dee2	Halle	0.39	0.33	0.34	0.31	0.29	0.49	0.49	0.50	0.48	0.46	0.46	0.45	0.46	0.44	0.42
dee3	Magdeburg	0.32	0.25	0.25	0.23	0.20	0.44	0.44	0.43	0.42	0.39	0.41	0.39	0.39	0.37	0.35
def	Schleswig-Holstein	0.39	0.35	0.34	0.34	0.33	0.48	0.50	0.49	0.49	0.49	0.46	0.46	0.45	0.45	0.45
deg	Thüringen	0.39	0.37	0.42	0.40	0.42	0.49	0.52	0.55	0.56	0.57	0.47	0.48	0.52	0.52	0.53
ee	Estonia	0.55	0.52	0.52	0.48	0.49	0.36	0.41	0.37	0.35	0.35	0.41	0.44	0.41	0.38	0.38
gr	Greece	0.55	0.52	0.52	0.48	0.49	0.20	0.22	0.22	0.26	0.24					
gr1	Voreia Ellada	0.37	0.37	0.33	0.31	0.33										
gr11	Anatoliki Makedonia, Thraki	0.27	0.23	0.23	0.26	0.23	0.08	0.10	0.10	0.15	0.10	0.13	0.13	0.13	0.18	0.13
gr12	Kentriki Makedonia	0.51	0.52	0.48	0.41	0.43	0.18	0.22	0.20	0.23	0.21	0.27	0.29	0.27	0.28	0.27
gr13	Dytiki Makedonia	0.13	0.14	0.10	0.09	0.10	0.06	0.09	0.07	0.07	0.06	0.08	0.10	0.08	0.07	0.07
gr14	Thessalia	0.30	0.32	0.27	0.17	0.15	0.08	0.12	0.10	0.12	0.08	0.14	0.17	0.14	0.13	0.10
gr2	Kentriki Ellada	0.26	0.25	0.25	0.23	0.25										
gr21	Ipeiros	0.45	0.40	0.46	0.31	0.29	0.16	0.18	0.20	0.20	0.16	0.24	0.23	0.26	0.23	0.19
gr22	Ionia Nisia															
gr23	Dytiki Ellada	0.44	0.39	0.44	0.37	0.37	0.16	0.16	0.18	0.21	0.19	0.23	0.22	0.24	0.25	0.23
gr24	Stereia Ellada	0.33	0.33	0.29	0.14	0.35	0.07	0.09	0.06	0.07	0.12	0.13	0.15	0.12	0.08	0.17
gr25	Peloponnisos	0.25	0.21	0.22	0.09	0.18	0.05	0.07	0.07	0.06	0.07	0.10	0.10	0.11	0.07	0.10
gr3	Attiki	0.86	0.80	0.82	0.75	0.74	0.32	0.34	0.34	0.39	0.36	0.46	0.45	0.46	0.48	0.46
gr4	Nisia Aigaioi, Kriti	0.24	0.22	0.21	0.21	0.26										
gr41	Voreio Aigaio	0.08	0.05	0.02	0.05	0.00	0.07	0.08	0.08	0.09	0.05	0.07	0.07	0.07	0.08	0.04
gr42	Notio Aigaio	0.05	0.02	0.00	0.00	0.03	0.00	0.00	0.00	0.00	0.00	0.01	0.00	0.00	0.00	0.01
gr43	Kriti	0.39	0.37	0.46	0.32	0.40	0.14	0.17	0.19	0.20	0.21	0.21	0.22	0.26	0.23	0.26
es	Spain	0.55	0.52	0.52	0.48	0.49	0.37	0.40	0.40	0.38	0.38					
es1	Noroeste	0.31	0.27	0.32	0.36	0.36										
es11	Galicia	0.29	0.27	0.32	0.36	0.40	0.23	0.26	0.29	0.31	0.32	0.24	0.26	0.29	0.33	0.34
es12	Principado de Asturias	0.33	0.26	0.33	0.35	0.28	0.26	0.26	0.31	0.30	0.26	0.27	0.26	0.31	0.31	0.27
es13	Cantabria	0.36	0.27	0.24	0.29	0.28	0.27	0.28	0.27	0.29	0.26	0.29	0.27	0.26	0.29	0.27
es2	Noreste	0.64	0.61	0.61	0.59	0.61										
es21	Pais Vasco	0.68	0.67	0.67	0.65	0.68	0.44	0.49	0.47	0.48	0.50	0.50	0.53	0.52	0.52	0.55
es22	Comunidad Foral de Navarra	0.72	0.70	0.67	0.63	0.59	0.44	0.49	0.46	0.46	0.45	0.51	0.54	0.51	0.51	0.48
es23	La Rioja	0.27	0.22	0.21	0.18	0.23	0.24	0.25	0.25	0.23	0.24	0.25	0.24	0.24	0.21	0.23
es24	Aragón	0.57	0.51	0.51	0.49	0.54	0.37	0.40	0.40	0.40	0.42	0.42	0.43	0.43	0.42	0.45
es3	Comunidad de Madrid	0.89	0.88	0.86	0.72	0.74	0.56	0.62	0.60	0.54	0.56	0.64	0.69	0.67	0.59	0.61
es4	Centro (ES)	0.34	0.28	0.31	0.31	0.30										
es41	Castilla y León	0.46	0.41	0.42	0.43	0.41	0.31	0.34	0.34	0.35	0.33	0.35	0.36	0.36	0.37	0.35
es42	Castilla-la Mancha	0.28	0.16	0.23	0.18	0.16	0.22	0.21	0.24	0.20	0.17	0.23	0.20	0.24	0.20	0.17
es43	Extremadura	0.07	0.05	0.08	0.13	0.15	0.13	0.16	0.18	0.19	0.18	0.11	0.13	0.15	0.18	0.17
es5	Este	0.60	0.58	0.56	0.50	0.52										
es51	Cataluña	0.66	0.65	0.63	0.56	0.57	0.43	0.47	0.45	0.43	0.44	0.48	0.52	0.50	0.47	0.47
es52	Comunidad Valenciana	0.49	0.46	0.45	0.40	0.44	0.32	0.36	0.34	0.32	0.33	0.36	0.38	0.37	0.34	0.36
es53	Illes Balears	0.16	0.15	0.15	0.12	0.15	0.16	0.21	0.20	0.17	0.16	0.16	0.20	0.19	0.16	0.16
es6	Sur	0.32	0.27	0.27	0.28	0.29										
es61	Andalucia	0.33	0.27	0.26	0.27	0.28	0.25	0.26	0.26	0.26	0.25	0.27	0.26	0.26	0.27	0.26
es62	Región de Murcia	0.32	0.30	0.36	0.33	0.33	0.25	0.28	0.31	0.29	0.28	0.26	0.28	0.32	0.30	0.29
es63	Ciudad Autónoma de Ceuta (ES)															
es64	Ciudad Autónoma de Melilla (ES)															
es7	Canarias (ES)	0.25	0.19	0.24	0.20	0.25	0.20	0.21	0.24	0.21	0.22	0.21	0.21	0.24	0.21	0.23
fr	France	0.55	0.52	0.52	0.48	0.49	0.54	0.57	0.56	0.57	0.57					
fr1	Île de France	0.82	0.81	0.80	0.68	0.71	0.73	0.77	0.75	0.73	0.76	0.75	0.78	0.76	0.72	0.75
fr2	Bassin Parisien	0.35	0.31	0.31	0.32	0.34										
fr21	Champagne-Ardenne	0.22	0.13	0.08	0.15	0.23	0.31	0.29	0.26	0.31	0.36	0.28	0.25	0.22	0.27	0.32
fr22	Picardie	0.31	0.23	0.27	0.26	0.38	0.37	0.37	0.38	0.40	0.48	0.35	0.33	0.35	0.37	0.46
fr23	Haute-Normandie	0.40	0.40	0.39	0.38	0.33	0.43	0.49	0.47	0.49	0.43	0.42	0.46	0.45	0.46	0.41
fr24	Centre	0.42	0.39	0.41	0.43	0.39	0.45	0.47	0.47	0.53	0.49	0.44	0.45	0.45	0.51	0.46
fr25	Basse-Normandie	0.36	0.31	0.31	0.20	0.32	0.39	0.41	0.41	0.36	0.44	0.38	0.38	0.38	0.32	0.41
fr26	Bourgogne	0.32	0.30	0.26	0.35	0.28	0.39	0.41	0.39	0.46	0.39	0.37	0.38	0.36	0.43	0.36
fr3	Nord - Pas-de-Calais	0.27	0.22	0.24	0.28	0.25	0.34	0.36	0.36	0.42	0.37	0.32	0.33	0.33	0.38	0.34
fr4	Est	0.46	0.45	0.44	0.43	0.43										
fr41	Lorraine	0.42	0.36	0.32	0.33	0.32	0.43	0.45	0.42	0.45	0.43	0.43	0.43	0.40	0.42	0.40
fr42	Alsace	0.50	0.47	0.50	0.51	0.51	0.49	0.51	0.53	0.58	0.57	0.49	0.50	0.53	0.56	0.55
fr43	Franche-Comté	0.46	0.54	0.53	0.45	0.46	0.48	0.56	0.55	0.53	0.53	0.47	0.56	0.54	0.51	0.51

		RNSII					REUSII					RRSII				
		T-4	T-3	T-2	T-1	T	T-4	T-3	T-2	T-1	T	T-4	T-3	T-2	T-1	T
fr5	Ouest	0.36	0.35	0.36	0.36	0.37										
fr51	Pays de la Loire	0.35	0.30	0.30	0.35	0.34	0.41	0.42	0.41	0.47	0.45	0.39	0.39	0.38	0.44	0.42
fr52	Bretagne	0.42	0.45	0.46	0.41	0.44	0.46	0.51	0.51	0.51	0.53	0.45	0.50	0.50	0.48	0.51
fr53	Poitou-Charentes	0.24	0.19	0.27	0.23	0.25	0.34	0.34	0.38	0.37	0.37	0.32	0.30	0.35	0.33	0.34
fr6	Sud-Ouest	0.57	0.50	0.46	0.38	0.44										
fr61	Aquitaine	0.44	0.34	0.32	0.30	0.35	0.45	0.44	0.43	0.43	0.47	0.45	0.42	0.40	0.40	0.44
fr62	Midi-Pyrénées	0.75	0.70	0.65	0.49	0.55	0.67	0.69	0.65	0.59	0.63	0.69	0.69	0.65	0.56	0.61
fr63	Limousin	0.29	0.25	0.25	0.20	0.34	0.36	0.37	0.36	0.35	0.44	0.34	0.34	0.34	0.31	0.42
fr7	Centre-Est	0.58	0.55	0.57	0.53	0.52										
fr71	Rhône-Alpes	0.61	0.58	0.61	0.55	0.56	0.59	0.61	0.61	0.63	0.62	0.59	0.60	0.61	0.61	0.60
fr72	Auvergne	0.40	0.36	0.35	0.40	0.33	0.44	0.44	0.44	0.52	0.44	0.43	0.42	0.42	0.49	0.42
fr8	Méditerranée	0.44	0.36	0.37	0.40	0.38										
fr81	Languedoc-Roussillon	0.42	0.34	0.36	0.41	0.35	0.46	0.46	0.46	0.52	0.48	0.45	0.43	0.43	0.49	0.44
fr82	Provence-Alpes-Côte d'Azur	0.46	0.38	0.38	0.41	0.40	0.48	0.48	0.46	0.52	0.52	0.47	0.45	0.44	0.50	0.49
fr83	Corse	0.07	0.12	0.05	0.15	0.15	0.24	0.32	0.27	0.32	0.30	0.20	0.27	0.21	0.28	0.26
fr9	French overseas departments (FR)															
ie	Ireland	0.55	0.52	0.52	0.48	0.49	0.48	0.51	0.50	0.49	0.47					
ie01	Border, Midlands and Western	0.27	0.26	0.25	0.26	0.30	0.35	0.38	0.37	0.38	0.37	0.33	0.35	0.34	0.35	0.35
ie02	Southern and Eastern	0.53	0.51	0.51	0.46	0.47	0.50	0.53	0.53	0.51	0.49	0.51	0.52	0.52	0.50	0.48
it	Italy	0.55	0.52	0.52	0.48	0.49	0.40	0.42	0.41	0.40	0.42					
itc	Nord Ovest	0.66	0.62	0.62	0.56	0.55										
itc1	Piemonte	0.71	0.67	0.65	0.58	0.55	0.48	0.50	0.49	0.47	0.47	0.54	0.54	0.53	0.50	0.49
itc2	Valle d'Aosta/Vallée d'Aoste	0.17	0.17	0.28	0.25	0.25	0.18	0.21	0.27	0.25	0.26	0.18	0.20	0.27	0.25	0.26
itc3	Liguria	0.55	0.51	0.47	0.46	0.49	0.41	0.41	0.39	0.39	0.43	0.44	0.44	0.41	0.41	0.44
itc4	Lombardia	0.65	0.61	0.62	0.56	0.55	0.45	0.47	0.47	0.45	0.47	0.50	0.50	0.51	0.48	0.49
itd	Nord Est	0.56	0.56	0.54	0.48	0.47										
itd1	Provincia Autonoma Bolzano-Bozen															
itd2	Provincia Autonoma Trento															
itd3	Veneto	0.48	0.50	0.46	0.41	0.43	0.35	0.39	0.37	0.35	0.38	0.38	0.42	0.39	0.37	0.40
itd4	Friuli-Venezia Giulia	0.62	0.62	0.61	0.51	0.50	0.43	0.47	0.45	0.41	0.42	0.48	0.51	0.49	0.44	0.44
itd5	Emilia-Romagna	0.65	0.63	0.65	0.58	0.54	0.45	0.47	0.47	0.45	0.45	0.50	0.51	0.52	0.48	0.47
ite	Centro (IT)	0.62	0.58	0.56	0.54	0.56										
ite1	Toscana	0.48	0.45	0.44	0.48	0.47	0.35	0.37	0.36	0.39	0.41	0.39	0.39	0.38	0.41	0.43
ite2	Umbria	0.49	0.41	0.43	0.39	0.47	0.36	0.35	0.35	0.34	0.41	0.40	0.36	0.37	0.35	0.42
ite3	Marche	0.42	0.39	0.37	0.39	0.38	0.32	0.34	0.32	0.35	0.35	0.34	0.35	0.34	0.36	0.35
ite4	Lazio	0.74	0.69	0.68	0.62	0.66	0.50	0.52	0.50	0.49	0.54	0.56	0.56	0.55	0.53	0.57
itf	Sud (IT)	0.33	0.29	0.29	0.27	0.29										
itf1	Abruzzo	0.43	0.41	0.44	0.40	0.46	0.33	0.35	0.36	0.35	0.40	0.35	0.36	0.38	0.36	0.42
itf2	Molise	0.25	0.20	0.22	0.25	0.26	0.23	0.23	0.24	0.25	0.27	0.23	0.22	0.24	0.25	0.27
itf3	Campania	0.36	0.34	0.33	0.29	0.32	0.29	0.31	0.31	0.29	0.31	0.31	0.32	0.31	0.29	0.31
itf4	Puglia	0.28	0.21	0.21	0.21	0.20	0.25	0.23	0.24	0.23	0.23	0.25	0.23	0.23	0.22	0.22
itf5	Basilicata	0.29	0.29	0.33	0.31	0.29	0.25	0.28	0.31	0.29	0.29	0.26	0.29	0.31	0.30	0.29
itf6	Calabria	0.18	0.15	0.11	0.12	0.17	0.18	0.20	0.18	0.17	0.20	0.18	0.19	0.17	0.16	0.20
itg	Isole (IT)	0.26	0.23	0.25	0.24	0.23										
itg1	Sicilia	0.26	0.21	0.24	0.24	0.24	0.24	0.24	0.26	0.25	0.25	0.24	0.23	0.25	0.25	0.25
itg2	Sardegna	0.26	0.28	0.26	0.22	0.21	0.22	0.27	0.26	0.23	0.23	0.23	0.27	0.26	0.23	0.23
cy	Cyprus	0.55	0.52	0.52	0.48	0.49	0.22	0.24	0.27	0.31	0.27	0.30	0.31	0.33	0.35	0.32
lv	Latvia	0.55	0.52	0.52	0.48	0.49	0.23	0.25	0.28	0.25	0.26	0.31	0.32	0.34	0.31	0.32
lt	Lithuania	0.55	0.52	0.52	0.48	0.49	0.28	0.31	0.25	0.26	0.28	0.35	0.36	0.32	0.32	0.33
lu	Luxembourg (Grand-Duché)	0.55	0.52	0.52	0.48	0.49	0.41	0.42	0.42	0.41	0.47	0.44	0.45	0.44	0.42	0.48
hu	Hungary	0.55	0.52	0.52	0.48	0.49	0.34	0.37	0.37	0.40	0.39					
hu1	Közép-Magyarország	0.90	0.86	0.85	0.75	0.75	0.51	0.53	0.53	0.56	0.55	0.60	0.61	0.61	0.61	0.60
hu2	Dunántúl	0.42	0.37	0.35	0.32	0.31										
hu21	Közép-Dunántúl	0.46	0.44	0.42	0.38	0.37	0.31	0.33	0.33	0.35	0.31	0.34	0.36	0.36	0.36	0.33
hu22	Nyugat-Dunántúl	0.40	0.34	0.32	0.26	0.25	0.27	0.28	0.28	0.29	0.25	0.31	0.30	0.29	0.28	0.25
hu23	Dél-Dunántúl	0.35	0.29	0.26	0.27	0.27	0.24	0.25	0.24	0.28	0.25	0.27	0.26	0.24	0.28	0.26
hu3	Alföld és Észak	0.34	0.31	0.29	0.24	0.27										
hu31	Észak-Magyarország	0.33	0.26	0.28	0.19	0.25	0.24	0.24	0.26	0.24	0.25	0.26	0.25	0.26	0.22	0.25
hu32	Észak-Alföld	0.36	0.33	0.31	0.28	0.27	0.25	0.26	0.26	0.28	0.25	0.28	0.28	0.27	0.28	0.26
hu33	Dél-Alföld	0.29	0.28	0.26	0.23	0.26	0.21	0.23	0.23	0.25	0.24	0.23	0.25	0.24	0.24	0.24
mt	Malta	0.55	0.52	0.52	0.48	0.49	0.28	0.30	0.28	0.26	0.26	0.35	0.36	0.34	0.31	0.31



		RNSII					REUSII					RRSII				
		T-4	T-3	T-2	T-1	T	T-4	T-3	T-2	T-1	T	T-4	T-3	T-2	T-1	T
nl	Netherlands	0.55	0.52	0.52	0.48	0.49	0.64	0.67	0.64	0.63	0.63					
nl1	Noord-Nederland	0.37	0.36	0.31	0.30	0.33										
nl11	Groningen	0.57	0.45	0.45	0.39	0.41	0.66	0.61	0.58	0.56	0.56	0.64	0.57	0.55	0.52	0.52
nl12	Friesland	0.21	0.20	0.22	0.19	0.20	0.39	0.42	0.42	0.41	0.40	0.35	0.37	0.37	0.35	0.35
nl13	Drenthe	0.22	0.24	0.20	0.22	0.26	0.39	0.45	0.41	0.42	0.42	0.35	0.40	0.35	0.37	0.38
nl2	Oost-Nederland	0.51	0.47	0.47	0.44	0.46										
nl21	Overijssel	0.39	0.40	0.39	0.39	0.41	0.51	0.57	0.54	0.56	0.56	0.48	0.53	0.50	0.51	0.52
nl22	Gelderland	0.54	0.50	0.49	0.45	0.47	0.64	0.65	0.62	0.61	0.61	0.61	0.61	0.58	0.57	0.58
nl23	Flevoland	0.59	0.49	0.62	0.49	0.49	0.65	0.64	0.70	0.63	0.63	0.64	0.60	0.68	0.60	0.59
nl3	West-Nederland	0.56	0.52	0.51	0.45	0.47										
nl31	Utrecht	0.64	0.63	0.58	0.53	0.55	0.72	0.76	0.69	0.69	0.70	0.70	0.73	0.67	0.65	0.66
nl32	Noord-Holland	0.55	0.47	0.48	0.44	0.45	0.65	0.65	0.63	0.62	0.62	0.62	0.60	0.59	0.57	0.58
nl33	Zuid-Holland	0.57	0.54	0.51	0.44	0.47	0.66	0.68	0.64	0.61	0.62	0.64	0.65	0.60	0.57	0.58
nl34	Zeeland	0.25	0.22	0.27	0.21	0.24	0.41	0.43	0.45	0.41	0.40	0.37	0.38	0.40	0.36	0.36
nl4	Zuid-Nederland	0.57	0.56	0.59	0.55	0.56										
nl41	Noord-Brabant	0.59	0.59	0.64	0.59	0.60	0.65	0.70	0.71	0.71	0.71	0.63	0.67	0.69	0.68	0.68
nl42	Limburg (NL)	0.49	0.47	0.45	0.44	0.44	0.57	0.61	0.57	0.59	0.57	0.55	0.58	0.54	0.55	0.53
at	Austria	0.55	0.52	0.52	0.48	0.49	0.49	0.53	0.55	0.54	0.53					
at1	Ostösterreich	0.65	0.59	0.59	0.52	0.54										
at11	Burgenland	0.13	0.16	0.18	0.16	0.21	0.23	0.30	0.33	0.32	0.32	0.21	0.26	0.29	0.28	0.29
at12	Niederösterreich	0.37	0.32	0.32	0.29	0.31	0.38	0.39	0.41	0.40	0.39	0.38	0.38	0.39	0.37	0.37
at13	Wien	0.83	0.76	0.77	0.66	0.68	0.66	0.69	0.71	0.68	0.67	0.70	0.71	0.72	0.68	0.68
at2	Südösterreich	0.48	0.48	0.47	0.46	0.50										
at21	Kärnten	0.37	0.42	0.33	0.31	0.37	0.39	0.46	0.44	0.43	0.45	0.38	0.45	0.41	0.40	0.43
at22	Steiermark	0.52	0.49	0.52	0.51	0.55	0.48	0.53	0.56	0.57	0.58	0.49	0.52	0.55	0.56	0.58
at3	Westösterreich	0.46	0.46	0.45	0.43	0.41										
at31	Oberösterreich	0.46	0.48	0.47	0.44	0.40	0.43	0.50	0.51	0.50	0.46	0.44	0.50	0.50	0.49	0.45
at32	Salzburg	0.40	0.36	0.34	0.37	0.37	0.39	0.41	0.42	0.45	0.43	0.39	0.40	0.40	0.43	0.41
at33	Tirol	0.47	0.46	0.42	0.41	0.43	0.44	0.48	0.47	0.48	0.48	0.45	0.48	0.46	0.46	0.47
at34	Vorarlberg	0.44	0.45	0.41	0.41	0.39	0.41	0.47	0.46	0.48	0.45	0.42	0.46	0.45	0.46	0.43
pl	Poland	0.55	0.52	0.52	0.48	0.49	0.27	0.28	0.28	0.27	0.27					
pl1	Centralny	0.75	0.71	0.71	0.64	0.67										
pl11	Lódzkie	0.50	0.43	0.42	0.40	0.44	0.24	0.24	0.23	0.24	0.24	0.31	0.29	0.28	0.28	0.29
pl12	Mazowieckie	0.86	0.84	0.84	0.74	0.76	0.41	0.43	0.42	0.41	0.43	0.52	0.53	0.53	0.50	0.51
pl2	Poludniowy	0.48	0.45	0.48	0.46	0.48										
pl21	Malopolskie	0.56	0.54	0.56	0.51	0.53	0.28	0.30	0.30	0.29	0.29	0.35	0.36	0.36	0.34	0.35
pl22	Slaskie	0.41	0.39	0.43	0.42	0.43	0.20	0.22	0.23	0.25	0.25	0.25	0.26	0.28	0.29	0.29
pl3	Wschodni	0.35	0.32	0.27	0.29	0.32										
pl31	Lubelskie	0.48	0.45	0.40	0.39	0.40	0.24	0.25	0.24	0.23	0.23	0.30	0.30	0.28	0.27	0.27
pl32	Podkarpackie	0.32	0.29	0.26	0.27	0.33	0.16	0.18	0.16	0.17	0.17	0.20	0.21	0.18	0.19	0.21
pl33	Swietokrzyskie															
pl34	Podlaskie															
pl4	Pólnocno-Zachodni	0.38	0.36	0.36	0.34	0.38	0.19	0.21	0.21	0.21	0.22	0.24	0.25	0.25	0.24	0.26
pl41	Wielkopolskie	0.41	0.38	0.40	0.38	0.40										
pl42	Zachodniopomorskie															
pl43	Lubuskie															
pl5	Poludniowo-Zachodni	0.46	0.44	0.46	0.41	0.47	0.23	0.25	0.25	0.24	0.26	0.29	0.30	0.30	0.28	0.31
pl51	Dolnoslaskie															
pl52	Opolskie															
pl6	Pólnocny	0.45	0.41	0.40	0.38	0.41	0.23	0.23	0.22	0.23	0.23	0.28	0.28	0.26	0.26	0.27
pl61	Kujawsko-Pomorskie															
pl62	Warmińsko-Mazurskie															
pl63	Pomorskie	0.60	0.56	0.55	0.49	0.51										
pt	Portugal	0.55	0.52	0.52	0.48	0.49	0.22	0.25	0.25	0.25	0.24					
pt1	Continente (PT)	0.58	0.55	0.54	0.49	0.50										
pt11	Norte	0.39	0.37	0.35	0.35	0.37	0.15	0.18	0.17	0.18	0.17	0.21	0.23	0.22	0.22	0.22
pt15	Algarve	0.29	0.13	0.23	0.26	0.31	0.10	0.09	0.12	0.13	0.15	0.15	0.10	0.15	0.17	0.19
pt16	Centro (PT)	0.63	0.58	0.56	0.45	0.50	0.24	0.26	0.26	0.23	0.24	0.33	0.34	0.33	0.28	0.31
pt17	Lisboa	0.78	0.77	0.74	0.68	0.65	0.34	0.38	0.36	0.36	0.34	0.45	0.47	0.45	0.44	0.42
pt18	Alentejo	0.30	0.15	0.12	0.20	0.22	0.11	0.10	0.09	0.11	0.10	0.16	0.11	0.09	0.13	0.13
pt2	Região Autónoma dos Açores (PT)															
pt3	Região Autónoma da Madeira (PT)	0.20	0.15	0.09	0.13	0.13	0.06	0.07	0.06	0.07	0.03	0.09	0.09	0.07	0.08	0.06

		RNSII					REUSII					RRSII				
		T-4	T-3	T-2	T-1	T	T-4	T-3	T-2	T-1	T	T-4	T-3	T-2	T-1	T
si	Slovenia	0.55	0.52	0.52	0.48	0.49	0.46	0.48	0.48	0.52	0.53	0.48	0.49	0.49	0.51	0.52
sk	Slovakia	0.55	0.52	0.52	0.48	0.49	0.35	0.36	0.36	0.30	0.29					
sk01	Bratislavský kraj	1.00	1.00	1.00	1.00	1.00	0.57	0.60	0.59	0.55	0.54	0.68	0.70	0.69	0.66	0.66
sk02	Západné Slovensko	0.31	0.32	0.27	0.30	0.36	0.24	0.27	0.26	0.22	0.23	0.26	0.28	0.26	0.24	0.26
sk03	Stredné Slovensko	0.42	0.39	0.41	0.35	0.37	0.28	0.30	0.32	0.24	0.23	0.32	0.32	0.34	0.26	0.27
sk04	Východné Slovensko	0.37	0.35	0.34	0.23	0.25	0.26	0.28	0.28	0.18	0.17	0.29	0.30	0.30	0.20	0.19
fi	Finland	0.55	0.52	0.52	0.48	0.49	0.76	0.80	0.80	0.78	0.79					
fi1	Manner-Suomi	0.56	0.53	0.52	0.48	0.49	0.77	0.81	0.80	0.78	0.79	0.71	0.74	0.73	0.71	0.71
fi13	Itä-Suomi	0.27	0.25	0.23	0.25	0.26	0.54	0.58	0.56	0.57	0.57	0.47	0.50	0.48	0.49	0.49
fi18	Etelä-Suomi	0.66	0.61	0.60	0.54	0.56	0.85	0.87	0.86	0.84	0.86	0.80	0.81	0.80	0.77	0.78
fi19	Länsi-Suomi	0.53	0.47	0.48	0.45	0.43	0.75	0.76	0.76	0.75	0.73	0.69	0.69	0.69	0.67	0.65
fi1a	Pohjois-Suomi	0.50	0.49	0.46	0.42	0.45	0.73	0.78	0.76	0.73	0.76	0.67	0.71	0.69	0.65	0.68
fi2	Åland	0.00	0.00	0.06	0.03	0.05	0.35	0.39	0.44	0.40	0.38	0.26	0.29	0.35	0.30	0.30
se	Sweden	0.55	0.52	0.52	0.48	0.49	0.82	0.83	0.83	0.84	0.84					
se01	Stockholm	0.69	0.65	0.64	0.58	0.58	1.00	1.00	1.00	1.00	1.00	0.92	0.91	0.91	0.89	0.90
se02	Östra Mellansverige	0.52	0.51	0.49	0.44	0.45	0.83	0.85	0.84	0.84	0.84	0.75	0.76	0.75	0.74	0.74
se04	Sydsverige	0.52	0.50	0.48	0.45	0.46	0.84	0.85	0.84	0.86	0.86	0.76	0.77	0.75	0.75	0.76
se06	Norra Mellansverige	0.27	0.27	0.26	0.27	0.28	0.62	0.64	0.64	0.67	0.66	0.53	0.55	0.55	0.57	0.57
se07	Mellersta Norrland	0.31	0.28	0.25	0.26	0.22	0.65	0.64	0.61	0.65	0.59	0.56	0.55	0.52	0.55	0.50
se08	Övre Norrland	0.35	0.31	0.30	0.25	0.28	0.68	0.68	0.67	0.65	0.66	0.60	0.59	0.58	0.55	0.57
se09	Småland med öarna	0.27	0.26	0.23	0.23	0.27	0.61	0.62	0.60	0.62	0.63	0.52	0.53	0.50	0.52	0.54
se0a	Västsverige	0.58	0.52	0.54	0.50	0.52	0.89	0.87	0.91	0.92	0.93	0.81	0.78	0.82	0.81	0.83
uk	United Kingdom	0.55	0.52	0.52	0.48	0.49	0.65	0.68	0.66	0.64	0.63					
ukc	North East	0.41	0.40	0.34	0.32	0.36	0.54	0.59	0.53	0.52	0.52	0.51	0.54	0.48	0.47	0.48
ukd	North West	0.50	0.46	0.43	0.41	0.42	0.62	0.64	0.60	0.60	0.58	0.59	0.59	0.56	0.55	0.54
uke	Yorkshire and The Humber	0.39	0.37	0.36	0.35	0.37	0.53	0.56	0.55	0.54	0.53	0.50	0.52	0.50	0.49	0.49
ukf	East Midlands	0.48	0.46	0.46	0.41	0.45	0.60	0.64	0.62	0.59	0.60	0.57	0.59	0.58	0.54	0.57
ukg	West Midlands	0.53	0.51	0.49	0.45	0.47	0.63	0.66	0.63	0.61	0.61	0.60	0.62	0.60	0.57	0.57
ukh	Eastern	0.69	0.66	0.67	0.58	0.59	0.75	0.78	0.77	0.73	0.72	0.73	0.75	0.74	0.70	0.69
uki	London	0.53	0.53	0.52	0.46	0.48	0.64	0.69	0.66	0.63	0.63	0.61	0.65	0.63	0.59	0.59
ukj	South East	0.75	0.70	0.71	0.65	0.63	0.78	0.81	0.79	0.78	0.75	0.77	0.78	0.77	0.75	0.72
ukk	South West	0.55	0.50	0.49	0.47	0.47	0.64	0.66	0.64	0.64	0.62	0.62	0.62	0.60	0.60	0.58
ukl	Wales	0.35	0.32	0.31	0.30	0.35	0.51	0.54	0.52	0.51	0.52	0.47	0.48	0.46	0.46	0.48
ukm	Scotland	0.35	0.30	0.29	0.30	0.31	0.52	0.53	0.52	0.52	0.50	0.48	0.48	0.46	0.47	0.45
ukn	Northern Ireland	0.23	0.22	0.26	0.24	0.27	0.43	0.47	0.49	0.47	0.46	0.38	0.41	0.44	0.41	0.41