

Association of Reperfusion With Brain Edema in Patients With Acute Ischemic Stroke A Secondary Analysis of the MR CLEAN Trial

Citation for published version (APA):

Kimberly, W. T., Dutra, B. G., Boers, A. M. M., Alves, H. C. B. R., Berkhemer, O. A., van den Berg, L., Sheth, K. N., Roos, Y. B. W. E. M., van der Lugt, A., Beenen, L. F. M., Dippel, D. W. J., van Zwam, W. H., van Oostenbrugge, R. J., Lingsma, H. F., Marquering, H., Majoie, C. B. L. M., & MR CLEAN Investigators (2018). Association of Reperfusion With Brain Edema in Patients With Acute Ischemic Stroke A Secondary Analysis of the MR CLEAN Trial. *JAMA Neurology*, 75(4), 453-461. <https://doi.org/10.1001/jamaneurol.2017.5162>

Document status and date:

Published: 01/04/2018

DOI:

[10.1001/jamaneurol.2017.5162](https://doi.org/10.1001/jamaneurol.2017.5162)

Document Version:

Publisher's PDF, also known as Version of record

Document license:

Taverne

Please check the document version of this publication:

- A submitted manuscript is the version of the article upon submission and before peer-review. There can be important differences between the submitted version and the official published version of record. People interested in the research are advised to contact the author for the final version of the publication, or visit the DOI to the publisher's website.
- The final author version and the galley proof are versions of the publication after peer review.
- The final published version features the final layout of the paper including the volume, issue and page numbers.

[Link to publication](#)

General rights

Copyright and moral rights for the publications made accessible in the public portal are retained by the authors and/or other copyright owners and it is a condition of accessing publications that users recognise and abide by the legal requirements associated with these rights.

- Users may download and print one copy of any publication from the public portal for the purpose of private study or research.
- You may not further distribute the material or use it for any profit-making activity or commercial gain
- You may freely distribute the URL identifying the publication in the public portal.

If the publication is distributed under the terms of Article 25fa of the Dutch Copyright Act, indicated by the "Taverne" license above, please follow below link for the End User Agreement:

www.umlib.nl/taverne-license

Take down policy

If you believe that this document breaches copyright please contact us at:

repository@maastrichtuniversity.nl

providing details and we will investigate your claim.

Association of Reperfusion With Brain Edema in Patients With Acute Ischemic Stroke

A Secondary Analysis of the MR CLEAN Trial

W. Taylor Kimberly, MD, PhD; Bruna Garbugio Dutra, MD; Anna M. M. Boers, MSc; Heitor C. B. R. Alves, MD; Olvert A. Berkhemer, MD; Lucie van den Berg, MD; Kevin N. Sheth, MD; Yvo B. W. E. M. Roos, MD, PhD; Aad van der Lugt, MD; Ludo F. M. Beenen, MD; Diederik W. J. Dippel, MD, PhD; Wim H. van Zwam, MD, PhD; Robert J. van Oostenbrugge, MD, PhD; Hester F. Lingsma, PhD; Henk Marquering, PhD; Charles B. L. M. Majoie, MD, PhD; for the MR CLEAN Investigators

 Supplemental content

IMPORTANCE It is uncertain whether therapeutic reperfusion with endovascular treatment yields more or less brain edema.

OBJECTIVE To elucidate the association between reperfusion and brain edema. The secondary objectives were to evaluate whether brain edema could partially be responsible for worse outcomes in patients with later reperfusion or lower Alberta Stroke Program Early Computed Tomography Score.

DESIGN, SETTING, AND PARTICIPANTS This was a post hoc analysis of the Multicenter Randomized Clinical Trial of Endovascular Treatment for Acute Ischemic Stroke in the Netherlands (MR CLEAN), which was a prospective, randomized, multicenter clinical trial of endovascular treatment compared with conventional care of patients with acute anterior circulation ischemic stroke. Of 502 patients enrolled from December 2010 to June 2014, 2 patients declined to participate. Additionally, exclusion criteria were absence of follow-up imaging or presence of parenchymal hematoma, resulting in 462 patients included in this study. Brain edema was assessed retrospectively, from December 10, 2016, to July 24, 2017, by measuring midline shift (MLS) in all available follow-up scans. Observers were blinded to clinical data.

MAIN OUTCOMES AND MEASURES Midline shift was assessed as present or absent and as a continuous variable. Reperfusion status was assessed by the modified thrombolysis in cerebral infarction score in the endovascular treatment arm. The modified arterial occlusive lesion score was used to evaluate the recanalization status in both arms. The modified Rankin scale score at 90 days was used for functional outcome.

RESULTS Of 462 patients, the mean (SD) age was 65 (11) years, and 41.8% (n = 193) were women. Successful reperfusion and recanalization were associated with a reduced likelihood of having MLS (adjusted common odds ratio, 0.25; 95% CI, 0.12-0.53; $P < .001$ and adjusted common odds ratio, 0.34; 95% CI, 0.21-0.55; $P < .001$, respectively). Midline shift was partially responsible for worse modified Rankin scale scores in patients without reperfusion or recanalization (MLS changed the logistic regression coefficients by 30.3% and 12.6%, respectively). In patients with delayed reperfusion or lower Alberta Stroke Program Early Computed Tomography Score, MLS mediated part of the worse modified Rankin scale scores, corresponding to a change in the regression coefficient of 33.3% and 64.2%, respectively.

CONCLUSIONS AND RELEVANCE Successful reperfusion was associated with reduced MLS. This study identifies an additional benefit of reperfusion in relation to edema, as well as rescuing ischemic brain tissue at risk for infarction.

TRIAL REGISTRATION Netherlands Trial Registry number: [NTR1804](#) and Current Controlled Trials number: [ISRCTN10888758](#)

JAMA Neurol. 2018;75(4):453-461. doi:[10.1001/jamaneurol.2017.5162](#)
Published online January 24, 2018.

Author Affiliations: Author affiliations are listed at the end of this article.

Group Information: MR CLEAN investigators are listed at the end of this article.

Corresponding Author: W. Taylor Kimberly, MD, PhD, Massachusetts General Hospital, 55 Fruit St, Lunder 644, Boston, MA 02114 (wtkimberly@mgh.harvard.edu).

Therapeutic reperfusion with endovascular treatment (EVT) is consistently associated with better long-term functional outcome in anterior circulation acute ischemic stroke.¹ Reperfusion may act in part by arresting infarct growth and rescuing ischemic tissue at risk.²⁻⁴ Given the demonstrated benefit in patients with large vessel occlusion, identifying additional patients who may benefit from reperfusion therapy is critical. Extending the time by carefully selecting small core lesions shows substantial promise.⁵ However, the role for treating patients with lower Alberta Stroke Program Early Computed Tomography Score (ASPECTS) is uncertain. Understanding the mechanisms that mediate or limit the benefits of reperfusion in these contexts may help refine appropriate patient selection.

Reperfusion injury,⁶⁻⁸ and specifically reperfusion edema, may reduce the benefit of thrombectomy. However, studies on the association between reperfusion and brain edema have yielded conflicting results. Findings from rodent and primate animal studies suggest that reperfusion can augment the development of edema.⁹⁻¹¹ Conversely, some investigations have indicated that successful reperfusion may attenuate edema.^{12,13} Additional studies have shown that persistent occlusion is associated with a greater risk of malignant edema.^{14,15} However, to our knowledge, none have included EVT cohorts with highly effective thrombectomy devices.

The successes of EVT for ischemic stroke have highlighted the salience of clarifying the association between reperfusion and edema in patients with stroke. The goal of this analysis was to evaluate the association between reperfusion status and brain edema in patients enrolled in the Multicenter Randomized Clinical Trial of Endovascular Treatment for Acute Ischemic Stroke in the Netherlands (MR CLEAN) cohort.^{16,17} Based on preliminary data,¹² our hypothesis was that the beneficial effect of reperfusion and recanalization on outcome may be mediated in part by a reduction in edema. A secondary hypothesis was that in patients with delayed reperfusion or lower ASPECTS, brain edema could partially be responsible for the worse functional outcome.

Methods

Patient Characteristics

Patient imaging and clinical data were retrospectively selected from the MR CLEAN cohort.^{16,17} The MR CLEAN study was a prospective, randomized, multicenter clinical trial of patients with acute ischemic stroke with a National Institutes of Health Stroke Scale score of 2 or more, a relevant proximal intracranial arterial occlusion of the anterior circulation confirmed by neuroimaging, and the ability to start EVT within 6 hours after stroke onset. The original study randomized patients to EVT plus conventional care compared with conventional care only. Detailed inclusion and exclusion criteria have been reported previously.^{16,17} Written informed consent was obtained from all patients or their legally authorized representatives. The original study protocol was approved by a central medical ethics committee and the research board of each participating center. In the original trial, 2 patients declined participation immediately after randomization.^{16,17}

Key Points

Question What is the association between reperfusion and brain edema in patients with acute ischemic stroke?

Findings In this exploratory post hoc analysis of the MR CLEAN trial, successful reperfusion reduced the odds of brain edema, measured by midline shift, by 73%. Reducing midline shift also mediated part of the favorable 90-day neurological outcome.

Meaning Reperfusion was associated with reduced brain edema in patients with acute ischemic stroke enrolled in the MR CLEAN trial.

Additional exclusion criteria for this exploratory post hoc analysis were the absence of follow-up (FU) imaging and the presence of parenchymal hematoma types 1 and 2 on FU computed tomography (CT) imaging.¹⁸ Posthemispherectomy patients were not excluded in our study because hemispherectomy procedures were usually performed after the 24-hour FU scan. In these cases, midline shift (MLS) was measured in the early FU scan before the surgical procedure.

Imaging Analysis and Outcomes

The imaging acquisition protocol was based on the MR CLEAN trial, as described previously,^{16,17} and included a baseline non-contrast CT and CT angiogram (CTA) (n = 462), a follow-up CTA or magnetic resonance angiogram at 24 hours (n = 440), and a second follow-up noncontrast CT or magnetic resonance imaging scan at day 5 to 7 (n = 352). The baseline infarct size was assessed by the ASPECTS, as previously described.¹⁹ Cerebral collateral vessels were assessed on the baseline CTA by the MR CLEAN imaging committee, using a 4-point scale category score (0, absent collaterals; 1, filling <50% of occluded area; 2, filling >50% but less <100%; or 3, filling 100% of occluded area).²⁰

Midline shift was measured on all available FU scans at 24 hours and 5 to 7 days. These times were categorized as early FU (24 hours) and late FU (5-7 days), respectively. Midline shift measurements were performed by readers who were blinded to the clinical data. Midline shift was assessed as both a dichotomous (present or absent) and a continuous variable. Midline shift was evaluated both ways to ensure that the nonparametric analysis of the continuous variable was not affected by the skewness of the data. The presence of MLS was determined by 2 readers from the MR CLEAN imaging committee (interrater reliabilities of 0.87 and 0.81 on early FU and late FU scans assessments, respectively), and was defined as any deviation of midline structures (eg, the septum pellucidum). The quantitative assessment of MLS was performed on patients previously categorized as having MLS. It was measured in millimeters at the level of the septum pellucidum and was assessed by a neuroradiologist (B.G.D.) using previously published approaches (eFigure 1 in the [Supplement](#)).²¹⁻²³

Recanalization was assessed on the 24-hour CTA in both treatment arms, using the modified arterial occlusive lesion score.²⁴ Scores were dichotomized into successful (modified arterial occlusive lesion, 3; complete recanalization)

and unsuccessful (modified arterial occlusive lesion <3). Reperfusion status was assessed on digital subtraction angiograms in the EVT arm using the modified thrombolysis in cerebral infarction (mTICI) score. The mTICI score was assigned following completion of the thrombectomy procedure. The mTICI score ranges from 0 (no antegrade reperfusion) to 3 (complete antegrade reperfusion, with absence of visualized occlusion in all distal branches), and successful reperfusion was defined as mTICI 2b or 3.²⁴ The time from stroke onset to reperfusion was indirectly assessed by the time from onset stroke to the end of EVT (time to reperfusion), measured in minutes.

Neurological functional outcome at 90 days was assessed by the modified Rankin Scale (mRS). The mRS scale ranges from 0 (no residual stroke symptoms) to 6 (death) and was evaluated across the entire score range as an ordinal variable.

Statistical Analysis

The patients were originally enrolled from December 2010 to June 2014, and MLS was assessed retrospectively. Descriptive analysis of baseline variables, treatment, and outcome were reported for groups with presence or absence of MLS using the χ^2 test for categorical data, the Mann-Whitney *U* test for non-normally distributed continuous data, and the *t* test for normally distributed continuous data.

Associations of recanalization, reperfusion, and treatment arm (EVT or conventional) with MLS were assessed by binary logistic regression (for dichotomous MLS) and by Mann-Whitney *U* test (for continuous MLS). Association between time to reperfusion and MLS was assessed by binary logistic regression and linear regression for dichotomous MLS and continuous MLS, respectively. Unadjusted and adjusted analyses were performed in the binary logistic and linear regression models. To adjust for baseline prognostic variables, the models included age, sex, stroke severity (baseline National Institutes of Health Stroke Scale), time from stroke onset to randomization, history of diabetes mellitus, admission serum glucose, collateral score, baseline ASPECTS, atrial fibrillation, smoking, and prior stroke.

Univariable and multivariable ordinal logistic regression was used to assess the association between MLS and mRS at 90 days. The effect of MLS on outcome was expressed as an unadjusted and adjusted common odds ratios (cOR and acOR) for a shift in the direction of worse outcome on the mRS at 90 days.

Mediation analyses^{25,26} were performed to determine whether MLS influences the association of reperfusion, recanalization, time to reperfusion, and ASPECTS with functional outcome. Mediation analysis consists of a 4-step procedure detailed in eFigure 2 in the Supplement. The Sobel test was used to determine statistical significance of the mediation effect. The percent difference of the coefficients was measured after introducing MLS as the mediator. All statistical analyses were performed with IBM SPSS Statistics, version 24 software (SPSS Inc), and *P* less than .05 was considered statistically significant. All *P* values were 2-sided.

Results

Patient Characteristics

Of the 500 patients enrolled in the MR CLEAN trial, 38 patients were excluded owing to absence of FU imaging (*n* = 9) or presence of parenchymal hematoma (*n* = 29; 2 with parenchymal hematoma type 1 and 27 with parenchymal hematoma type 2). In total, 462 patients were included in our analysis, of which 46.8% (*n* = 216) had MLS present on any of the FU scans. The characteristics of patients with and without MLS are listed in the Table. In patients with MLS, there was a significantly higher baseline National Institutes of Health Stroke Scale, higher admission serum glucose, a lower ASPECTS, worse collateral score, longer time to reperfusion, a higher rate of internal carotid artery terminus arterial occlusion, a higher rate of hemicraniectomy, and worse 90-day mRS.

Factors Associated With Midline Shift

First, we evaluated the recanalization score on 24-hour CTA in both treatment arms. The modified arterial occlusive lesion score was available in 381 of 462 patients (82.5%). The rate of successful recanalization on 24-hour CTA was 34.7% in the conventional arm and 65.3% in the EVT arm. Patients with successful recanalization had a lower frequency of MLS (32.7% vs 56% in those with unsuccessful recanalization; *P* < .001). In binary logistic regression, successful recanalization was associated with a reduced likelihood of having MLS (cOR, 0.38; 95% CI, 0.25-0.56; Nagelkerke *R*², 0.07; *P* < .001 and acOR, 0.34; 95% CI, 0.21-0.55; Nagelkerke *R*², 0.20; *P* < .001). Accordingly, when MLS was evaluated as a continuous variable, patients with successful recanalization had a lower median MLS value on the late FU scan (median, 0 mm; IQR, 0-2.8 mm vs median, 2.4 mm; IQR, 0-5.3 mm; *P* < .001; Figure 1A) and early FU scan (median, 0 mm; IQR, 0-1.8 mm vs median, 0 mm; IQR, 0-3.3 mm; *P* = .04; eFigure 3 in the Supplement).

We next evaluated reperfusion in the EVT arm (*n* = 202), using the mTICI score that was available in 91.1% of patients (*n* = 184). Successful reperfusion was observed in 109 of 184 patients (59.2%). Patients with successful reperfusion had a lower rate of MLS compared with the unsuccessful reperfusion group (33.9% vs 64%, *P* < .001). In binary logistic regression, successful reperfusion was associated with a lower likelihood of MLS in unadjusted and adjusted models (cOR, 0.29; 95% CI, 0.16-0.53; Nagelkerke *R*², 0.11; *P* < .001 and acOR, 0.25; 95% CI, 0.12-0.53; Nagelkerke *R*², 0.22; *P* < .001). The median MLS values were lower in the successful reperfusion group compared with unsuccessful reperfusion cases on the late FU (median, 0 mm; IQR, 0-2.9 mm vs median, 2.3 mm; IQR, 0-4.1 mm; *P* = .001, Figure 1B) and early FU scans (median, 0 mm; IQR, 0-2.2 mm vs median, 1.3 mm; IQR, 0-4.2 mm; *P* = .01; eFigure 3 in the Supplement). A representative example of a successful vs unsuccessful reperfusion is shown in Figure 2.

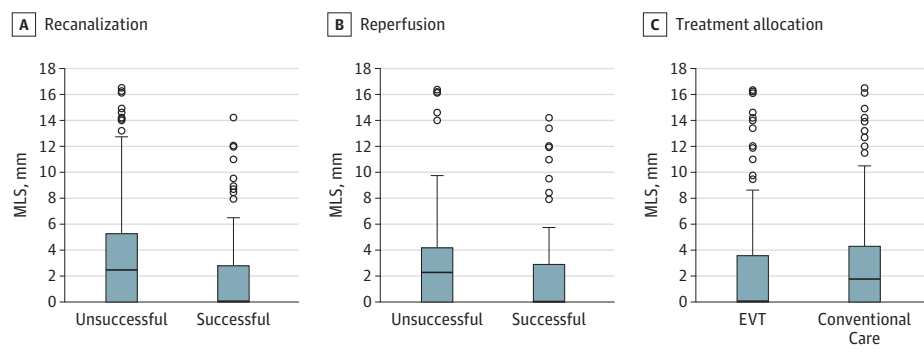
A longer time to reperfusion was associated with an increased likelihood of having MLS (cOR, 1.007; 95% CI, 1.003-1.011; Nagelkerke *R*², 0.10; *P* < .001 and acOR, 1.012; 95% CI,

Table. Patient Characteristics of Those With and Without Midline Shift

Characteristics	With Midline Shift (n = 216)	Without Midline Shift (n = 246)	P Value
Age, median (IQR), y	65 (53-77)	66 (51.5-74.5)	.71
Male, No. (%)	126 (58.3)	143 (58.1)	.96
Time from onset to randomization, median (IQR), min	222 (184.2-259.7)	193.5 (141-246)	.08
Admission NIHSS, median (IQR)	19 (16-22)	16 (13-19)	.001
Baseline ASPECTS, median (IQR)	8 (7-9)	9 (8-10)	<.001
Admission systolic blood pressure, median (IQR), mm Hg	140 (123-157)	145 (129.5-160.5)	.71
Admission diastolic blood pressure, median (IQR), mm Hg	80 (70-90)	82 (74.5-89.5)	.77
Admission serum glucose, median (IQR), mmol/L	6.8 (6-7.9)	6.5 (5.7-7.5)	.03
Baseline medical history, No. (%)			
Previous stroke	22 (10.2)	25 (10.2)	.99
Diabetes mellitus	31 (14.4)	26 (10.6)	.22
Atrial fibrillation	64 (29.6)	58 (23.6)	.14
Smoke	60 (27.8)	76 (30.9)	.46
Occlusion location on baseline CTA, No. (%)			
ICA-T	79 (36.6)	53 (21.5)	.01
M1	125 (57.9)	165 (67.1)	
M2	10 (4.6)	26 (10.6)	
A2	1 (0.5)	2 (0.8)	
Collateral score, No. (%)			
0: Absent collaterals	20 (9.3)	4 (1.6)	<.001
1: Filling <50% of occluded area	73 (34.1)	48 (19.7)	
2: >50% to <100%	73 (34.1)	113 (46.3)	
3: 100% of occluded area	48 (22.4)	79 (32.4)	
Endovascular treatment, No. (%)	89 (41.2)	113 (45.9)	.31
Successful recanalization status, No. (%)	65 (38.9)	134 (62.6)	<.001
Successful reperfusion status, No. (%)	37 (43.5)	72 (72.7)	<.001
Time to reperfusion, median (IQR)	271.5 (229.5-313.5)	252.5 (205-300)	.02
Functional outcome (mRS), median (IQR)	4 (3-5)	2 (1-3)	<.001
Hemicraniectomy, No. (%)	22 (10.1)	2 (0.9)	.001

Abbreviations: A2, anterior cerebral artery, segment 2; ASPECTS, Alberta Stroke Program Early Computed Tomography Score; CTA, computed tomography angiography; ICA-T, terminal internal carotid artery; IQR, interquartile range; M1, middle cerebral artery, segment 1; M2, middle cerebral artery, segment 2; mRS, modified Rankin Scale; NIHSS, National Institutes of Health Stroke Scale.

Figure 1. Midline Shift (MLS) on the Day 5 to 7 Computed Tomography (CT) Scan Based on Recanalization, Reperfusion, and Treatment Allocation



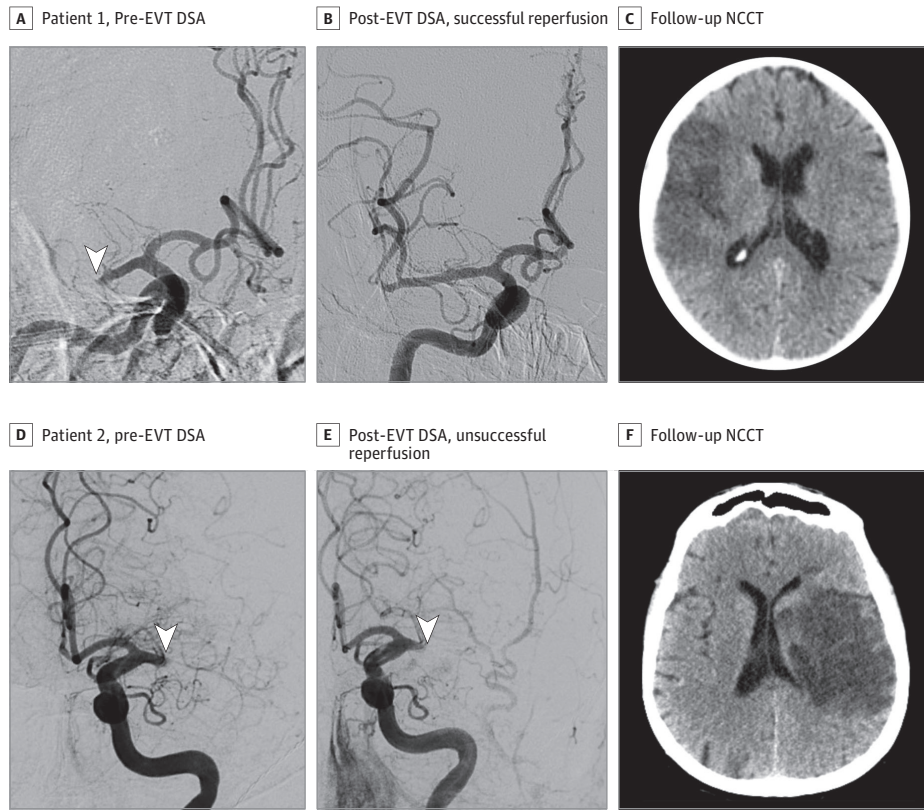
A, MLS measurements based on recanalization status on follow-up CT angiogram. The box represents the interquartile range (25% to 75%), the solid horizontal line represents the median value, error bars encompass the 10th to 90th percentiles, small circles represent the outlier values, and $P < .001$. B, MLS values in relation to modified thrombolysis in cerebral infarction reperfusion status; $P = .001$. C, MLS values in relation to treatment allocation; $P = .18$. EVT indicates endovascular treatment.

1.004-1.020; Nagelkerke R^2 , 0.20; $P = .003$). For each 90 minutes of delay in reperfusion, there was an increase in MLS of 1.0 mm and 0.80 mm on the early FU scans according to the unadjusted and adjusted analyses, respectively (β , .011; 95% CI, 0.005-0.017; $P = .001$ in unadjusted analysis and β , .008; 95% CI, 0.002-0.015; $P = .002$ in adjusted analysis) and of

1.4 mm and 1.24 mm on the late FU scans for both the unadjusted and adjusted models (β , .015; 95% CI, 0.008-0.023; $P < .001$ in unadjusted model and β , .014; 95% CI, 0.005-0.021; $P = .002$ in adjusted model).

We next examined the effect of treatment allocation on MLS. Midline shift was more frequently observed in the con-

Figure 2. Examples of the Association Between Reperfusion Status and Midline Shift



Digital subtraction angiogram (DSA), both prior to and after endovascular treatment (EVT), and the follow-up noncontrast computed tomography (NCCT) are illustrated. Patient 1 with successful reperfusion (A) shows a complete right M1 occlusion (arrowhead) seen on the pretreatment DSA frontal view. B, Post-EVT DSA shows successful reperfusion. C, Follow-up NCCT at day 5 shows a hypoattenuated area on the right frontoparietal lobe with a minor mass effect and lack of MLS. Patient 2 with unsuccessful reperfusion (D) had a complete left M1 occlusion (arrowhead) seen on pre-EVT DSA lateral view. E, No reperfusion (arrowhead) is observed on posttreatment DSA. F, The 24-hour follow-up NCCT shows a hypoattenuated area on the left frontoparietal lobe, corona radiata, and caudate nucleus with mass effect and a midline shift of 3 mm.

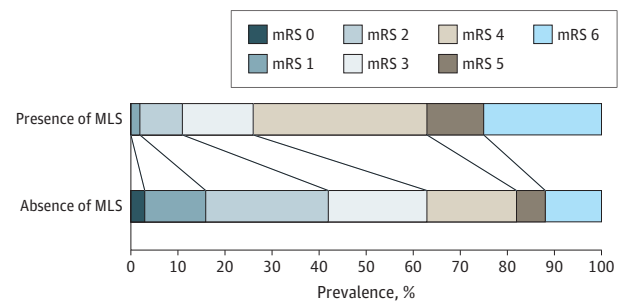
ventional arm (58.8%) than in the EVT arm (41.2%), but this was not statistically significant in unadjusted and adjusted binary logistic regression models (cOR, 0.82, 95% CI, 0.57-1.19; $P = .31$ and acOR, 0.78, 95% CI, 0.52-1.17; $P = .27$, respectively). Similarly, there were no statistically significant differences in the median MLS values between the treatment groups (Figure 1C and eFigure 3 in the Supplement), although a smaller MLS was observed in the EVT arm on the late FU scans (median, 0 mm; IQR, 0-3.6 mm for the EVT arm vs median, 1.7 mm; IQR, 0-4.3 mm for conventional care; $P = .18$).

Midline Shift and Functional Outcome

The presence of MLS was associated with a worse functional outcome (cOR, 4.22; 95% CI, 2.98-5.98; $P < .001$ and acOR, 3.49; 95% CI, 2.38-5.12; $P < .001$; Figure 3). There was a shift toward worse outcome, with a cOR of 1.21 for each millimeter increase in MLS in both early and late FU scans. In the adjusted analyses with continuous MLS values, the acORs were 1.24 (95% CI, 1.17-1.33) and 1.21 (95% CI, 1.15-1.30) in the early and late FU scans, respectively ($P < .001$, eTable in the Supplement).

In the mediation analyses (Figure 4), after including MLS as a mediator, the ordinal regression coefficient was reduced by 30.3% in reperfusion (Figure 4A) and 12.6% in recanalization (Figure 4B), consistent with MLS partially mediating the association between recanalization or reperfusion with outcome. For the evaluation of time to reperfusion, the percentage difference of the coefficients between time to reperfu-

Figure 3. The Modified Rankin Scale (mRS) Distribution for the Groups of Patients With and Without Midline Shift (MLS)



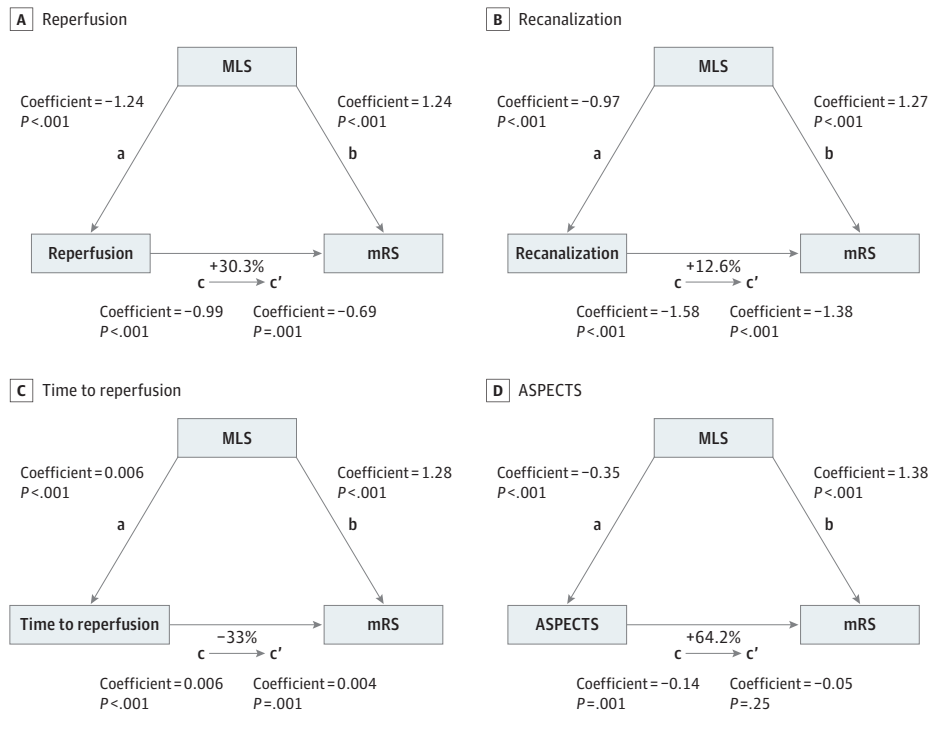
Scores range from 0 (no symptoms) to 6 (death). Black lines indicate shifts in mRS values across MLS groups ($P < .001$).

sion and outcome was 33.3% (Figure 4C) after including MLS as a mediator. For ASPECTS, the mediation effect was stronger, and MLS was responsible to change 64.2% of the coefficient value (Figure 4D). For all the analyses, the Sobel test was statistically significant.

Discussion

In this study, we investigated the association between reperfusion or recanalization and brain edema in the MR CLEAN trial.

Figure 4. Mediation Analyses of Midline Shift (MLS) With Neurological Outcome



Each step of the analyses evaluating the mediation effect of MLS on the association of reperfusion (A), recanalization (B), time to reperfusion (C) and Alberta Stroke Program Early Computed Tomography Score (ASPECTS) with the functional outcome (D; modified Rankin Scale [mRS] at 90 days) are illustrated. The coefficient and P values of the regression equations of each step (steps a, b, c, and c') are described. The analyses were performed for a shift in the direction of worse functional outcome. The percentage differences of the coefficients (1-c'/c) are also shown.

In patients with successful restoration of blood flow, defined by either recanalization or reperfusion measures, we consistently found less MLS. Later reperfusion and lower ASPECTS were related to increased MLS, suggesting that edema formation sufficient to cause MLS may limit the benefits of reperfusion in these patients. Moreover, we demonstrated that worse functional outcome associated with unsuccessful blood flow restoration, lower ASPECTS, or later reperfusion could be explained partially by brain edema formation as measured by MLS.

Prior studies have evaluated the association between reperfusion and brain edema in humans. Horsch et al²⁷ found an increased odds of having brain edema in patients with unsuccessful recanalization, but the association was not statistically significant. Similarly, a lack of recanalization have been described as a predictor of malignant cerebral edema.^{13,28,29} In 2017, Irvine et al¹² demonstrated an association between successful reperfusion and reduced edema, but this study did not include patients with current thrombectomy devices.¹² In the context of these prior studies, our analysis provides additional support for the concept that reperfusion may have several benefits, not only by rescuing ischemic tissue at risk but also by reducing brain edema.

There is a well-established association between cerebral edema and poor outcome or death, particularly in severe stroke with malignant progression.^{14,15,28} Proximal arterial occlusion, a higher baseline National Institutes of Health Stroke Scale, higher baseline glucose,³⁰ poor collaterals,³¹ and lower ASPECTS are associated with malignant brain edema.^{14,15,28,29,32} The observation that decompressive hemicraniectomy, if performed early enough,^{33,34} can improve outcome in a subset of patients

supports the conclusion that edema formation has a more direct relation with poor outcome. Emerging data suggests that edema may also play a role in moderate stroke,²¹ although a causal association has not been established. The finding that MR CLEAN patients with MLS had worse outcomes further highlights the potential role of edema in moderate to severe stroke.

After the restoration of blood flow, the secondary goal of stroke clinical care is the mitigating factors that may exacerbate further neurological deterioration. For example, treating brain edema is an important approach in the subsequent acute care and includes options such as surgical decompression or osmotic therapy and potential preventive strategies.^{23,35} Our data could assist the selection of patients for brain edema prevention because in patients with lower ASPECTS or delayed reperfusion, worse outcome was partially explained by the MLS.

Limitations and Strengths

This study has several limitations. First, brain edema was assessed retrospectively by measuring MLS, which is an indirect measure of the mass effect rather than a direct assessment of water concentration. Approximately half of patients did not have measurable MLS but may have had a small amount of edema that did not lead to a change in the MLS measurement. Nevertheless, MLS is considered an easily assessable and reasonable quantitative parameter for brain edema in patients with acute ischemic stroke that has been linked to clinical outcome.^{36,37} Second, we excluded patients with parenchymal hemorrhage types 1 and 2, consistent with prior studies,^{21,22} although edema and hemorrhage frequently coexist. However, the number of patients excluded

was small, and excluding them would bias toward the null hypothesis. Finally, the mediation analysis does not confirm a causal association of edema owing to the observational nature of the data.

The strengths of this study include the analysis of brain edema in a randomized, multicenter study design that evaluated highly effective thrombectomy devices. To our knowledge, this is also the first study to assess the mediation effect of MLS on functional outcome based on reperfusion and recanalization status, time to reperfusion, and ASPECTS in patients with acute ischemic stroke.

Taken together, our data provide insight into the association between reperfusion and brain edema. Our study reinforces the benefits of early reperfusion and recanalization in reducing brain edema and suggests that EVT does not increase the extension of brain edema, as has been reported in preclinical models.⁹⁻¹¹ These data also suggest that edema may help explain the previous observation that final infarct volume only partially accounts for the EVT

effect on outcome.³⁸ The identification of predictors of brain edema in our data could help the selection of patients with higher risk of developing brain edema and could guide appropriate patient selection for edema prevention. Further prospective studies are warranted to confirm the potential causative role of reperfusion and especially treatment allocation in influencing brain edema in patients with acute ischemic stroke.

Conclusions

Successful reperfusion is associated with reduced mass effect, as measured by MLS. Midline shift was partially responsible for the worse mRS at 90 days in patients with unsuccessful blood flow restoration, lower ASPECTS, or later reperfusion. This study confirms a pleiotropic benefit of reperfusion in addition to rescuing ischemic brain tissue at risk for infarction.

ARTICLE INFORMATION

Accepted for Publication: December 29, 2017.

Published Online: January 24, 2018.

doi:10.1001/jamaneurol.2017.5162

Author Affiliations: Center for Genomic Medicine and Department of Neurology, Massachusetts General Hospital, Boston (Kimberly); Department of Radiology and Nuclear Medicine, Academic Medical Center, Amsterdam, the Netherlands (Dutra, Boers, Alves, Berkhemer, Beenen, Marquering, Majoie); Department of Neurology, Erasmus MC University Medical Center Rotterdam, Rotterdam, the Netherlands (Berkhemer, Dippel); Department of Neurology, Academic Medical Center, Amsterdam, the Netherlands (van den Berg, Roos); Department of Neurology, Yale New Haven Hospital, New Haven, Connecticut (Sheth); Department of Radiology, Erasmus MC University Medical Center Rotterdam, Rotterdam, the Netherlands (van der Lugt); Department of Radiology, Maastricht University Medical Center, Maastricht, the Netherlands (van Zwam); Cardiovascular Research Institute Maastricht, Maastricht University Medical Center, Maastricht, the Netherlands (van Zwam, van Oostenbrugge); Department of Neurology, Maastricht University Medical Center, Maastricht, the Netherlands (van Oostenbrugge); Department of Public Health, Erasmus MC University Medical Center Rotterdam, Rotterdam, the Netherlands (Lingsma); Department of Biomedical Engineering and Physics, Academic Medical Center, Amsterdam, the Netherlands (Marquering).

Author Contributions: Drs Dutra and Kimberly had full access to all of the data in the study and takes responsibility for the integrity of the data and the accuracy of the data analysis. Drs Kimberly and Dutra are co-first authors, and Drs Marquering and Majoie are co-senior authors.

Concept and design: Kimberly, Dutra, van den Berg, Seth, Roos, van Oostenbrugge, Marquering, Majoie. **Acquisition, analysis, or interpretation of data:** Kimberly, Dutra, Boers, Alves, Berkhemer, Seth, van der Lugt, Beenen, Dippel, van Zwam, Lingsma, Marquering, Majoie.

Drafting of the manuscript: Kimberly, Dutra, Marquering.

Critical revision of the manuscript for important intellectual content: All authors.

Statistical analysis: Kimberly, Dutra, Alves, Lingsma, Marquering.

Obtained funding: Roos, van Zwam, van Oostenbrugge.

Administrative, technical, or material support: Berkhemer, Seth, Roos, van Oostenbrugge, Marquering.

Supervision: Kimberly, van Zwam, Marquering, Majoie.

Conflict of Interest Disclosures: Dr van Zwam reported receiving consultant fees for Stryker and Codman (speaker's bureau). Academic Medical Center received funds from Stryker for consultations by Dr Majoie. Dr Dippel reported that his institution received fees for his role as a consultant for Stryker and Bracco Imaging (speaker's bureau/lecture fees). Dr Kimberly reported his institution receiving grant support from Remedy Pharmaceuticals Inc. No other disclosures were reported.

Funding/Support: The MR CLEAN trial was supported in part by the Dutch Heart Foundation and unrestricted grants from AngioCare BV, Covidien/EV3, MEDAC GmbH/LAMEPRO, Penumbra Inc, and Stryker. The analysis was supported in part by National Institutes of Health grant R01NS099209 and American Heart Association grant 17CSA 33550004 (Dr Kimberly).

Role of the Funder/Sponsor: The funding sources had no role in the design and conduct of the study; collection, management, analysis, and interpretation of the data; preparation, review, or approval of the manuscript; and decision to submit the manuscript for publication.

Group Information: The MR CLEAN investigators included the following: Peter J. Koudstaal, MD, PhD, and Diederik W. J. Dippel, MD, PhD, Department of Neurology, Erasmus MC University Medical Center Rotterdam; Yvo B. W. E. M. Roos, MD, PhD, Lucie A. van den Berg, MD, and Paul J. Nederkoorn, MD, PhD, Department of Neurology, Academic Medical Center, Amsterdam; Robert J. van Oostenbrugge,

MD, PhD, Debbie Beumer, MD, and Julie Staals, MD, PhD, Department of Neurology, Maastricht University Medical Center, Cardiovascular Research Institute Maastricht; Jelis Boiten, MD, PhD, Department of Neurology, Medisch Centrum Haaglanden, the Hague; Marieke J. H. Wermer, MD, PhD, Department of Neurology, Leiden University Medical Center; L. Jaap Kappelle, MD, PhD, Department of Neurology, University Medical Center Utrecht; Ewoud J. van Dijk, MD, PhD, Department of Neurology, Radboud University Medical Center, Nijmegen; Wouter J. Schonewille, MD, PhD, Department of Neurology, St Antonius Hospital, Nieuwegein; Jeannette Hofmeijer, MD, PhD, and Jacques A. van Oostayen, MD, PhD, Department of Radiology, Rijnstate Hospital, Arnhem; Patrick C. Vroomen, MD, PhD, Department of Neurology, University Medical Center Groningen; Paul L. M. de Kort, MD, PhD, Department of Neurology, St Elisabeth Hospital, Tilburg; Koos Keizer, MD, PhD, Department of Neurology, Catharina Hospital, Eindhoven; Sebastiaan F. de Bruijn, MD, PhD, Department of Neurology, Haga Hospital, the Hague; J. S. Peter van den Berg, MD, PhD, Department of Neurology, Isala Klinieken, Zwolle; Tobien H. C. M. L. Schreuder, MD, Department of Neurology, Atrium Medical Center, Heerlen; Leo A. M. Aerden, MD, PhD, and H. Zwenneke Flach, MD, Department of Neurology, Reinier de Graaf Gasthuis, Delft; Marieke C. Visser, MD, PhD, Department of Neurology, VU Medical Center, Amsterdam; Heleen M. den Hertog, MD, PhD, Department of Neurology, Medical Spectrum Twente, Enschede; Patrick A. Brouwer, MD, Aad van der Lugt, MD, PhD, and Bart J. Emmer, MD, PhD, Department of Radiology, Erasmus MC University Medical Center Rotterdam; Charles B. L. M. Majoie, MD, PhD, Ludo F. M. Beenen, MD, Marieke E. S. Sprengers, MD, PhD, René van den Berg, MD, PhD, and Olvert A. Berkhemer, MD, Department of Radiology, Academic Medical Center, Amsterdam; Wim H. van Zwam, MD, PhD, Department of Radiology, Maastricht University Medical Center; Geert J. Lycklama à Nijeholt, MD, PhD, Department of Radiology, Medisch Centrum Haaglanden, the Hague; Marianne A. A. van Walderveen, MD, PhD, Department

of Radiology, Leiden University Medical Center; Rob H. Lo, MD, Department of Radiology, University Medical Center Utrecht; Joost de Vries, MD, PhD, Department of Neurosurgery, Radboud University Medical Center, Nijmegen; Jan Albert Vos, MD, PhD, Department of Radiology, St Antonius Hospital, Nieuwegein; Omid Eshghi, MD, Department of Radiology, University Medical Center Groningen; Alexander V. Tielbeek, MD, PhD, Department of Radiology, Catharina Hospital, Eindhoven; Lukas C. van Dijk, MD, Department of Radiology, Haga Hospital, the Hague; Boudewijn A. A. M. van Hasselt, MD, Department of Radiology, Isala Klinieken, Zwolle; Roel J. J. Heijboer, MD, Department of Radiology, Atrium Medical Center, Heerlen; René J. Dallinga, MD, Department of Radiology, Reinier de Graaf Gasthuis, Delft; Joseph C. J. Bot, MD, PhD, Department of Radiology, VU Medical Center, Amsterdam; Dick G. Gerrits, MD, Department of Radiology, Medical Spectrum Twente, Enschede; Puck S. S. Fransen, MD, Departments of Neurology and Radiology, Erasmus MC University Medical Center Rotterdam; Department of Radiology, Erasmus MC University Medical Center Rotterdam; Henk A. Marquering, PhD, Departments of Radiology and Biomedical Engineering and Physics, Academic Medical Center, Amsterdam; Hester F. Lingsma, PhD, and Ewout W. Steyerberg, PhD, Department of Public Health, Erasmus MC University Medical Center Rotterdam; Albert J. Yoo, MD, Texas Stroke Institute, Plano; Sjoerd F. M. Jenniskens, MD, PhD, Department of Radiology, Radboud University Medical Center, Nijmegen; Renske M. van den Berg-Vos, MD, PhD, Department of Neurology, St Lucas Andreas Hospital, Amsterdam; Giorgos B. Karas, MD, PhD, MBA; and Department of Radiology, St Lucas Andreas Hospital, Amsterdam. The data monitoring and safety board included Martin M. Brown, MD (chair), National Hospital for Neurology and Neurosurgery, London, England; Thomas Liebig, MD, Medizinische Fakultät, Universität zu Köln, Germany; and Theo Stijnen, PhD, Leiden University Medical Center (independent statistician). The advisory board included Tommy Andersson, MD (neurointerventionist), Karolinska University Hospital, Stockholm, Sweden; Heinrich Mattle, MD (neurologist), University Hospital, Bern, Switzerland; and Nils Wahlgren, MD (neurologist), Karolinska University Hospital. Research nurses and local trial coordinators included Esther van der Heijden and Nazih Ghannouti, Erasmus MC University Medical Center Rotterdam; Nadine Fleitour and Imke Hooijenga, Academic Medical Center Amsterdam; Corina Puppels and Wilma Pellikaan, St Antonius Hospital, Nieuwegein; Annet Geerling, Radboud University Medical Center, Nijmegen; Annemieke Lindl-Velema, Maastricht University Medical Center; Gina van Vemde and Isala Klinieken, Zwolle, the Netherlands; Ans de Ridder and Paut Greebe, University Medical Center Utrecht; José de Bont-Stikkelbroeck, St Elisabeth Hospital, Tilburg; Joke de Meris, Medisch Centrum Haaglanden, the Hague; Kirsten Janssen, Leiden University Medical Center; and Willy Struijk, Haga Hospital, the Hague. Silvan Licher, Nikki Boodt, Adriaan Ros, Esmee Venema, Ilse Slokkers, Raymie-Jayce Ganpat, Maxim Mulder, Nawid Saiedie, Alis Heshmatollah, Stefanie Schipperen, Stefan Vinken, Tiemen van Bostel, and Jeroen Koets, Erasmus MC University Medical Center Rotterdam.

REFERENCES

- Goyal M, Menon BK, van Zwam WH, et al; HERMES collaborators. Endovascular thrombectomy after large-vessel ischaemic stroke: a meta-analysis of individual patient data from five randomised trials. *Lancet*. 2016;387(10029):1723-1731.
- Heiss WD, Huber M, Fink GR, et al. Progressive derangement of periinfarct viable tissue in ischemic stroke. *J Cereb Blood Flow Metab*. 1992;12(2):193-203.
- Ginsberg MD, Pulsinelli WA. The ischemic penumbra, injury thresholds, and the therapeutic window for acute stroke. *Ann Neurol*. 1994;36(4):553-554.
- Albers GW, Thijs VN, Wechsler L, et al; DEFUSE Investigators. Magnetic resonance imaging profiles predict clinical response to early reperfusion: the diffusion and perfusion imaging evaluation for understanding stroke evolution (DEFUSE) study. *Ann Neurol*. 2006;60(5):508-517.
- Nogueira RG, Jadhav AP, Haussen DC, et al; DAWN Trial Investigators. Thrombectomy 6 to 24 hours after stroke with a mismatch between deficit and infarct [published online November 11, 2017]. *N Engl J Med*. 2017.
- Hallenbeck JM, Dutka AJ. Background review and current concepts of reperfusion injury. *Arch Neurol*. 1990;47(11):1245-1254.
- Kidwell CS, Saver JL, Starkman S, et al. Late secondary ischemic injury in patients receiving intraarterial thrombolysis. *Ann Neurol*. 2002;52(6):698-703.
- Li F, Silva MD, Liu KF, et al. Secondary decline in apparent diffusion coefficient and neurological outcomes after a short period of focal brain ischemia in rats. *Ann Neurol*. 2000;48(2):236-244.
- Pillai DR, Dittmar MS, Baldranon D, et al. Cerebral ischemia-reperfusion injury in rats: a 3 T MRI study on biphasic blood-brain barrier opening and the dynamics of edema formation. *J Cereb Blood Flow Metab*. 2009;29(11):1846-1855.
- Bell BA, Symon L, Branston NM. CBF and time thresholds for the formation of ischemic cerebral edema, and effect of reperfusion in baboons. *J Neurosurg*. 1985;62(1):31-41.
- Gartshore G, Patterson J, Macrae IM. Influence of ischemia and reperfusion on the course of brain tissue swelling and blood-brain barrier permeability in a rodent model of transient focal cerebral ischemia. *Exp Neurol*. 1997;147(2):353-360.
- Irvine HJ, Ostwaldt A-C, Bevers MB, et al. Reperfusion after ischemic stroke is associated with reduced brain edema [published online July 21, 2017]. *J Cereb Blood Flow Metab*. 2017;X17720559.
- Cheripelli BK, Huang X, MacIsaac R, Muir KW. Interaction of recanalization, intracerebral hemorrhage, and cerebral edema after intravenous thrombolysis. *Stroke*. 2016;47(7):1761-1767.
- Hacke W, Schwab S, Horn M, Spranger M, De Georgia M, von Kummer R. "Malignant" middle cerebral artery territory infarction: clinical course and prognostic signs. *Arch Neurol*. 1996;53(4):309-315.
- Thomalla G, Hartmann F, Juettler E, et al; Clinical Trial Net of the German Competence Network Stroke. Prediction of malignant middle cerebral artery infarction by magnetic resonance imaging within 6 hours of symptom onset: A prospective multicenter observational study. *Ann Neurol*. 2010;68(4):435-445.
- Fransen PSS, Beumer D, Berkhemer OA, et al; MR CLEAN Investigators. MR CLEAN, a multicenter randomized clinical trial of endovascular treatment for acute ischemic stroke in the Netherlands: study protocol for a randomized controlled trial. *Trials*. 2014;15:343.
- Berkhemer OA, Fransen PS, Beumer D, et al; MR CLEAN Investigators. A randomized trial of intraarterial treatment for acute ischemic stroke. *N Engl J Med*. 2015;372(11):11-20.
- von Kummer R, Broderick JP, Campbell BCV, et al. The Heidelberg bleeding classification: classification of bleeding events after ischemic stroke and reperfusion therapy. *Stroke*. 2015;46(10):2981-2986.
- Barber PA, Demchuk AM, Zhang J, Buchan AM. Validity and reliability of a quantitative computed tomography score in predicting outcome of hyperacute stroke before thrombolytic therapy: ASPECTS Study Group: Alberta Stroke Programme Early CT Score. *Lancet*. 2000;355(9216):1670-1674.
- Liebeskind DS. Collateral circulation. *Stroke*. 2003;34(9):2279-2284.
- Battey TWK, Karki M, Singhal AB, et al. Brain edema predicts outcome after nonlacunar ischemic stroke. *Stroke*. 2014;45(12):3643-3648.
- Yoo AJ, Sheth KN, Kimberly WT, et al. Validating imaging biomarkers of cerebral edema in patients with severe ischemic stroke. *J Stroke Cerebrovasc Dis*. 2013;22(6):742-749.
- Sheth KN, Elm JJ, Molyneux BJ, et al. Safety and efficacy of intravenous glyburide on brain swelling after large hemispheric infarction (GAMES-RP): a randomised, double-blind, placebo-controlled phase 2 trial. *Lancet Neurol*. 2016;15(11):1160-1169.
- Zaidat OO, Yoo AJ, Khatri P, et al; Cerebral Angiographic Revascularization Grading (CARG) Collaborators; STIR Revascularization working group; STIR Thrombolysis in Cerebral Infarction (TIC) Task Force. Recommendations on angiographic revascularization grading standards for acute ischemic stroke: a consensus statement. *Stroke*. 2013;44(9):2650-2663.
- MacKinnon DP, Fairchild AJ, Fritz MS. Mediation analysis. *Annu Rev Psychol*. 2007;58(1):593-614.
- Baron RM, Kenny DA. The moderator-mediator variable distinction in social psychological research: conceptual, strategic, and statistical considerations. *J Pers Soc Psychol*. 1986;51(6):1173-1182.
- Horsch AD, Dankbaar JW, Stemerink TA, et al; DUST investigators. Imaging findings associated with space-occupying edema in patients with large middle cerebral artery infarcts. *AJNR Am J Neuroradiol*. 2016;37(5):831-837.
- Kim H, Jin ST, Kim YW, Kim SR, Park IS, Jo KW. Predictors of malignant brain edema in

middle cerebral artery infarction observed on CT angiography. *J Clin Neurosci*. 2015;22(3):554-560.

29. Jo K, Bajgur SS, Kim H, Choi HA, Huh PW, Lee K. A simple prediction score system for malignant brain edema progression in large hemispheric infarction. *PLoS One*. 2017;12(2):e0171425.

30. Shimoyama T, Kimura K, Uemura J, et al. The DASH score: a simple score to assess risk for development of malignant middle cerebral artery infarction. *J Neurol Sci*. 2014;338(1-2):102-106.

31. Volny O, Cimflova P, Mikulík R. Ipsilateral sinus hypoplasia and poor leptomeningeal collaterals as midline shift predictors. *J Stroke Cerebrovasc Dis*. 2016;25(7):1792-1796.

32. Kucinski T, Koch C, Grzyska U, Freitag HJ, Krömer H, Zeumer H. The predictive value of early CT and angiography for fatal hemispheric swelling in acute stroke. *AJNR Am J Neuroradiol*. 1998;19(5):839-846.

33. Jüttler E, Unterberg A, Woitzik J, et al; DESTINY II Investigators. Hemispherectomy in older patients with extensive middle-cerebral-artery stroke. *N Engl J Med*. 2014;370(12):1091-1100.

34. Vahedi K, Hofmeijer J, Juettler E, et al; DECIMAL, DESTINY, and HAMLET investigators. Early decompressive surgery in malignant infarction of the middle cerebral artery: a pooled analysis of three randomised controlled trials. *Lancet Neurol*. 2007;6(3):215-222.

35. Neuhaus AA, Couch Y, Hadley G, Buchan AM. Neuroprotection in stroke: the importance of

collaboration and reproducibility. *Brain*. 2017;140(8):2079-2092.

36. Pullicino PM, Alexandrov AV, Shelton JA, Alexandrova NA, Smurawska LT, Norris JW. Mass effect and death from severe acute stroke. *Neurology*. 1997;49(4):1090-1095.

37. Ropper AH. Lateral displacement of the brain and level of consciousness in patients with an acute hemispherical mass. *N Engl J Med*. 1986;314(15):953-958.

38. Bucker A, Boers AM, Bot JCJ, et al; MR CLEAN Trial Investigators (Multicenter Randomized Clinical Trial of Endovascular Treatment for Acute Ischemic Stroke in the Netherlands). Associations of ischemic lesion volume with functional outcome in patients with acute ischemic stroke: 24-hour versus 1-week imaging. *Stroke*. 2017;48(5):1233-1240.