

Movement Disorders and Mortality in Severely Mentally Ill Patients

Citation for published version (APA):

Willems, A. E., Mentzel, C. L., Bakker, P. R., van Os, J., Tenback, D. E., Gelan, P., Daantjes, E., Matroos, G. E., Hoek, H. W., & van Harten, P. N. (2022). Movement Disorders and Mortality in Severely Mentally Ill Patients: The Curaçao Extrapiramidal Syndromes Study XIV. *Schizophrenia Bulletin*, 48(4), 766-773. <https://doi.org/10.1093/schbul/sbac037>

Document status and date:

Published: 01/07/2022

DOI:

[10.1093/schbul/sbac037](https://doi.org/10.1093/schbul/sbac037)

Document Version:

Publisher's PDF, also known as Version of record

Document license:

Taverne

Please check the document version of this publication:

- A submitted manuscript is the version of the article upon submission and before peer-review. There can be important differences between the submitted version and the official published version of record. People interested in the research are advised to contact the author for the final version of the publication, or visit the DOI to the publisher's website.
- The final author version and the galley proof are versions of the publication after peer review.
- The final published version features the final layout of the paper including the volume, issue and page numbers.

[Link to publication](#)

General rights

Copyright and moral rights for the publications made accessible in the public portal are retained by the authors and/or other copyright owners and it is a condition of accessing publications that users recognise and abide by the legal requirements associated with these rights.

- Users may download and print one copy of any publication from the public portal for the purpose of private study or research.
- You may not further distribute the material or use it for any profit-making activity or commercial gain
- You may freely distribute the URL identifying the publication in the public portal.

If the publication is distributed under the terms of Article 25fa of the Dutch Copyright Act, indicated by the "Taverne" license above, please follow below link for the End User Agreement:

www.umlib.nl/taverne-license

Take down policy

If you believe that this document breaches copyright please contact us at:

repository@maastrichtuniversity.nl

providing details and we will investigate your claim.

Movement Disorders and Mortality in Severely Mentally Ill Patients: The Curacao Extrapyramidal Syndromes Study XIV

Anne E. Willems^{*1,2,☉}, Charlotte L. Mentzel^{1,2}, Pieter Roberto Bakker³, Jim van Os^{4,5}, Diederik E. Tenback^{6,7}, Petra Gelan⁸, Erna Daantjes⁸, Glenn E. Matroos⁸, Hans W. Hoek^{9–11}, and Peter N. van Harten^{1,2}

¹Research Department, Psychiatric Centre GGz Centraal, Amersfoort, The Netherlands; ²School for Mental Health and NeuroScience (MHENS), Maastricht University, Maastricht, The Netherlands; ³Arkin, Institute for Mental Health, Amsterdam, The Netherlands; ⁴Department of Psychiatry, Brain Centre Rudolf Magnus, University Medical Centre Utrecht, Utrecht, The Netherlands; ⁵King's College London, King's Health Partners, Department of Psychosis Studies, Institute of Psychiatry, London, UK; ⁶Veldzicht Centre for Transcultural Psychiatry, Custodial Institutions Agency (DJI), Ministry of Justice and Security, Balkbrug, The Netherlands; ⁷FPC de Oostvaarderskliniek, Custodial Institutions Agency (DJI), Ministry of Justice and Security, Almere, The Netherlands; ⁸Capriles Psychiatric Clinic, GGz Curaçao, Groot Kwartier, Curaçao; ⁹Parnassia Psychiatric Institute, The Hague, The Netherlands; ¹⁰Department of Psychiatry, University Medical Centre Groningen, University of Groningen, Groningen, The Netherlands; ¹¹Department of Epidemiology, Columbia University, Mailman School of Public Health, New York, New York, USA

*To whom correspondence should be addressed; GGz Centraal, Zon & Schild, Utrechtseweg 266, 3818 EW Amersfoort, The Netherlands; tel: 31-6-22332116, e-mail: a.willems@ggzcentraal.nl

Background and Hypothesis: There is a substantial gap in life expectancy between patients with severe mental illness (SMI) and the general population and it is important to understand which factors contribute to this difference. Research suggests an association between tardive dyskinesia (TD) and mortality; however, results are inconclusive. In addition, studies investigating associations between parkinsonism or akathisia and mortality are rare. We hypothesized that TD would be a risk factor for mortality in patients with SMI. **Study Design:** We studied a cohort of 157 patients diagnosed predominantly with schizophrenia on the former Netherlands Antilles. TD, parkinsonism, and akathisia were assessed with rating scales on eight occasions over a period of 18 years. Twenty-four years after baseline, survival status and if applicable date of death were determined. Associations between movement disorders and survival were analyzed using Cox regression. Sex, age, antipsychotics, antidepressants and benzodiazepines at each measurement occasion were tested as covariates. **Study Results:** Parkinsonism was a significant risk factor with an HR of 1.02 per point on the motor subscale of the Unified Parkinson's Disease Rating Scale (range 0–56). TD and akathisia were not significantly associated with mortality. **Conclusions:** Parkinsonism may be an important risk factor for mortality in SMI patients. This finding calls for more follow-up and intervention studies to confirm this finding and to explore whether treatment or prevention of parkinsonism can reduce excess mortality.

Key words: Tardive dyskinesia/parkinsonism/akathisia/schizophrenia/survival/life expectancy

Introduction

Patients with severe mental illness (SMI) are at an increased risk of early death in comparison with the general population.^{1,2} In schizophrenia and bipolar disorder, diagnoses that are highly prevalent in SMI populations, standardized mortality rates of 2–4.6 have been found,^{3–5} leading to a substantially reduced life expectancy of 9–25 years.^{3,6–8}

Besides major lifestyle-related problems such as smoking, little physical activity, an unhealthy diet,⁹ and problems with access to and quality of physical healthcare,¹⁰ movement disorders (MD) may also play a role in shortening the lifespan of SMI patients.^{11,12}

In nonaffective psychoses reported MD prevalence ranges from 3% to 70% for tardive dyskinesia (TD), from 17% to 72% for Parkinsonism, and from 9.3% to 31.3% for akathisia.¹³ MD can be induced by antipsychotics, but also reflect a fundamental aspect of neurodevelopmental pathophysiology involving the sensitization of dopaminergic nigrostriatal circuits.¹⁴

Several authors studied a possible link between TD and mortality. Some found higher mortality rates in SMI patients with TD than in those without TD^{11,12,15–17} but others reported negative findings.^{18–21} There is a paucity of research on Parkinsonism and akathisia and MD

combined.²¹ Because of the high prevalence of MD and the importance of understanding which factors contribute to the shortened lifespan of patients with SMI, we used data from the Curacao Extrapyrimal Syndromes Study in which we assessed the association between MD and mortality. The Curacao Extrapyrimal Syndromes Study comprises a 24-year follow-up study in which patients with SMI treated at the only psychiatric hospital on the island of Curacao (former Netherlands Antilles) were repeatedly assessed for the presence and severity of MD since 1992.^{22–26} In the present study, we investigate if TD, Parkinsonism, and akathisia are associated with mortality in a sample of 157 mainly African Caribbean patients.

Methods

Setting and Patients

The present study is part of the Curacao Extrapyrimal Syndromes Study.^{22,23} Patients from the Klinika Capriles (formerly Dr. D. R. Capriles clinic), the only psychiatric hospital of the former Netherlands Antilles (nowadays Curacao), were assessed 8 times over the course of an 18-year period including assessments for both MD and medication use. The study protocol was approved by the Curacao Institutional Review Board.

Inclusion criteria for the present study were: (1) age of 18 years or older; (2) cumulative history of antipsychotic use of at least three months. Current use of antipsychotics was not required; (3) absence of organic disorders that could cause MD; (4) no diagnosis of dementia; (5) no history of lobotomy; and (6) informed consent.

Patients were mainly of Afro-Caribbean descent and the majority were inpatients. Characteristics of the study design and the cohort are described in more detail in an earlier publication.²²

Measurements

Patients were assessed in 1992, 1993, 1994, 1996, 1997, 1998, 2001, and 2009 for TD, Parkinsonism, akathisia, and medication use. All eight assessments were carried out by the same two skilled raters (PvH and GM), simultaneously. TD was assessed with the Abnormal Involuntary Movement Scale (AIMS)²⁷ and case definition was based on Schooler and Kane criteria for probable TD.²⁸ The motor examination part of the Unified Parkinson's Disease Rating Scale (UPDRS)²⁹ was used to assess Parkinsonism. Since rest-tremor and rigidity are core symptoms of Parkinsonism, cases were assigned to the Parkinsonism group when they scored "mild" on one of those two items. If neither tremor nor rigidity was present, the cut-off point was at least one "moderate" or two "mild" scores on the other items.²² Akathisia was rated with the Barnes Akathisia Rating Scale (BARS)³⁰ and a patient was considered a case when a score of 2 or higher on item 4 was given. Cases, i.e. patients who

could be diagnosed with a movement disorder, were used here for illustrative purposes only (Table 2). For the Cox analysis, data about movement disorders were used in a continuous manner.

At baseline and at each follow-up assessment, a trained physician collected current medication use. At baseline, age, sex, DSM III-R diagnosis (schizophrenia or other, where schizophrenia included codes 295.1, 295.2, 295.3, 295.4, 295.6, 296.7, and 295.9), cocaine use, type of treatment (inpatient or day care), age at first admission, duration of illness, total years of admission, duration of last admission, and lifetime intake of anticholinergics were extracted from patients' files.

Seven years after the final assessment (follow-up seven), on April first, 2016, all-cause mortality was obtained using the patient's charts and the mortality register of Curacao. For the deceased patients, date of death was recorded.

Data Analysis

The association between MD and mortality was analyzed using a Cox regression with measurement occasion (baseline and 7 follow-ups) (microlevel) clustered in subjects (macrolevel), with the (1) STCOX routine of the STATA 13 statistical program (StataCorp., 2009); and (2) SHARED(ID) procedure for shared frailty, where the random component enters the hazard multiplicatively. Fitting the Cox model with the time-varying covariates was performed with STSPLIT, AT(FAILURES) procedure. Mortality data of each deceased subject were appended to the dataset. Associations were expressed as hazard ratios and proportional-hazard assumptions were tested using the PHTEST procedure.

The total score of the AIMS, the motor part of the UPDRS and the score of item 4 of the BARS at each assessment were included as time-varying variables, as were type of antipsychotic (only first generation antipsychotic (FGA), only second generation antipsychotic (SGA), both FGA and SGA), dose in defined daily dose (DDD)³¹ of antipsychotics, benzodiazepines, and antidepressants. Age and sex were included as time-independent variables. Variables with a *P*-value greater than .2 in a univariate analysis were dropped. Extra-linearity was assessed by including quadratic effects for all continuous independent variables. In case of nonlinearity (*P* < .05 of the quadratic term), a linear-quadratic term remained in the final model as suggested by Cleves.³²

Results

Description of the Sample

The original dataset of the Curacao Extrapyrimal Syndromes Study consisted of 222 patients. For the current study, patients who had undergone a lobotomy (*N* = 23), who had a diagnosis of dementia (*N* = 13), or a primary diagnosis of mental retardation (*N* = 3) were

excluded as not being representative of current SMI populations, leading to a dataset of 183 patients. Twenty-six patients could not be analyzed due to missing data. Therefore, data of 157 patients were used for the analysis.

Table 1 shows the demographic and clinical characteristics of the sample at baseline.

In table 2, age, medication use, prevalence and severity of MD at each assessment, and the numbers of patients that died in each consecutive time interval are presented. Of the 157 included in the Cox regression 84 patients (54%) died during follow-up. Mean age of death was 67.4 years (SD 15.6, range 24–94).

Movement Disorders

MD prevalence fluctuated over time (table 2). Across all eight measurements, TD cases were the most prevalent ranging between 37.6 % and 61.5 %. The prevalence of Parkinsonism and akathisia ranged from 27.4–40.0% and 1.3–12.8%, respectively.

Psychotropic Medication

Up until 1992, only FGA were available in Curacao, which is reflected in the percentages of patients using FGA and SGA between 1992 and 2009 (table 2). At baseline in 1992/1993, FGA were used by 93.0% of the sample while the remaining 7.0% did not take antipsychotic medication. Most patients continued to use an FGA, either alone or in combination with an SGA, which was the case for 74.7 % of the patients in 2009. Use of SGA, starting from 0% in 1992/1993, increased to 44.3% in 2009, either

Table 1. Sample Characteristics at Baseline

Characteristics	<i>n</i> = 157
Age, mean (SD)	48.8 (15.6)
Males, <i>n</i> (%)	115 (73.2)
Ethnicity, <i>n</i> (%)	
African-Caribbean	109 (74.7)
Mixed	29 (19.9)
Caucasian	6 (4.1)
Other	2 (1.4)
Primary diagnosis schizophrenia, <i>n</i> (%)	130 (82.8)
Cocaine use, <i>n</i> (%)	30 (19.1)
Type of treatment, <i>n</i> (%)	
Inpatient treatment	143(91.1)
Day care treatment	14 (8.9)
Age at first admission, mean (SD)	26.2 (10.1)
Duration of illness in years, mean (SD)	23.6 (14.3)
Total years of admission, mean (SD)	16.8 (14.4)
Duration of last admission in years, mean (SD)	12.8 (13.8)
Lifetime intake of anticholinergics (g benztropine equivalents), mean (SD)	23.6 (23.2)

Note: Number of cases with missing data; Ethnicity: *n* = 11; age at first admission: *n* = 10; duration of illness: *n* = 10; total years of admission: *n* = 11; duration of last admission in years: *n* = 11; lifetime intake of anticholinergics: *n* = 42.

alone or in combination with an FGA. The percentage of patients taking no antipsychotics varied between 3.3% and 8.2%. Antidepressants were used by 3.6–11.0% of the patients. The use of benzodiazepines gradually increased from 18.5% at baseline to 51.3% at follow-up 7 in 2009.

Cox Regression

Table 3 shows the results for the possible predictors of mortality from univariate analyses. Age, sex, Parkinsonism, antipsychotic type, and DDD antipsychotics were significant predictors and were included in a multivariate model. TD, akathisia, DDD benzodiazepines, and DDD antidepressants, were not significant as univariate predictors and were therefore not included. Extra-linearity was tested for Parkinsonism, age, and DDD antipsychotics and significance was found for the latter two variables. Linear-quadratic terms for age and DDD antipsychotics were therefore added to the final model (Cleves 2008). Interactions of age and time, and age and Parkinsonism were tested of which only the former was significant and thus included in the final model. Hazard ratios (HR) and significance for the variables in the final multivariate model are presented in table 4. Parkinsonism was positively associated with mortality (HR = 1.020, 95% CI 1.001–1.038, *P* = .034). Age showed significance as a linear squared predictor (HR = 1.002, 95% CI 1.0004–1.0032, *P* = .015). DDD antipsychotic displayed a significant linear (HR = 0.792, 95% CI 0.692–0.997 *P* = .047) and a trend as a linear-squared relation (HR = 1.154, 95% CI 0.993–1.340, *P* = .061). The survival function adjusted for Parkinsonism, age, and DDD antipsychotics is shown in figure 1. Separate survival functions adjusted for Parkinsonism, age and DDD antipsychotics are given in the supplementary materials.

Discussion

Our findings indicate that Parkinsonism is a significant risk factor for mortality in patients with SMI whereas TD and akathisia are not.

For Parkinsonism, one point increase on the motor examination subscale of the UPDRS was associated with a HR of 1.02. The motor part of the UPDRS consists of 14 items which can be scored 0–4 leading to a range of possible scores of 0–56. In our sample, the SD for cases with Parkinsonism was close to 10 points and an increase of 10 points would lead to an increase in the HR of mortality of 21%.

Previous studies on the association between MD and mortality in SMI focused on TD²⁻¹⁰ while only two studies also included Parkinsonism.^{19,29} Modestin et al.¹⁹ reported a higher mortality rate in patients with Parkinsonism than in those without, when studying 200 psychiatric patients treated with antipsychotic medication after 9 years follow-up. However, after adjustment, only age remained as a significant risk factor. Important

Table 2. Time Varying Sample Characteristics

Measurement	Baseline 1992-1993 <i>n</i> = 157	FU 1 1993 <i>n</i> = 151	FU 2 1994 <i>n</i> = 143	FU 3 1996 <i>n</i> = 136	FU 4 1997 <i>n</i> = 133	FU 5 1998 <i>n</i> = 131	FU 6 2001 <i>n</i> = 122	FU 7 2009 <i>n</i> = 96
Number of Patients Alive	6	8	7	3	2	9	26	23
Number of patients that died in subsequent time interval (<i>n</i>)								
Mean age (SD) ^a	48.8 (15.6)	53.0 (14.7)	50.4 (13.9)	53.8 (13.2)	53.0 (12.7)	54.5(12.7)	55.5 (13.0)	61.4 (10.7)
Medication								
Antipsychotics								
FGA only, <i>n</i> (%)	146 (93.0)	93 (84.5)	104 (89.7)	79 (86.8)	74 (83.1)	67 (79.8)	72 (67.9)	38 (48.1)
SGA only, <i>n</i> (%)	0	8 (7.3)	7 (6.0)	9 (9.9)	12 (13.5)	10 (11.9)	15 (14.2)	14 (17.7)
Combination FGA and SGA <i>n</i> (%)	0	0	0	0	0	1 (1.2)	13 (12.3)	21 (26.6)
No antipsychotic, <i>n</i> (%)	11 (7.0)	9 (8.2)	5 (4.3)	3 (3.3)	3 (3.4)	6 (7.1)	6 (5.7)	6 (7.6)
DDD antipsychotics ^b , mean (SD)	1.8 (1.4)	1.9 (1.5)	2.0(1.3)	2.0 (1.6)	2.1 (1.5)	2.4 (1.7)	2.1 (1.6)	2.4 (1.4)
Antidepressants, <i>n</i> (%) ^b	9 (5.7)	9 (8.1)	9 (7.8)	10 (11.0)	7 (7.9)	3 (3.6)	10 (9.4)	4 (5.0)
DDD antidepressants ^b , mean (SD)	0.9 (0.4)	0.8 (0.4)	0.9 (0.3)	0.9 (0.4)	0.8 (0.3)	0.9 (0.3)	1.1 (0.3)	1.3 (0.5)
Benzodiazepines, <i>n</i> (%)	29 (18.5)	23 (20.1)	34 (29.3)	31 (34.0)	31 (34.8)	35 (41.7)	52 (49.1)	41 (51.3)
DDD benzodiazepines ^b , mean (SD)	1.4 (1.0)	1.2 (0.9)	1.0 (0.7)	1.0 (0.8)	1.2 (1.1)	1.3 (1.2)	1.2 (1.0)	1.3 (1.0)
Movement disorders								
Tardive dyskinesia, cases (%)	59 (37.6)	59 (53.6)	72 (61.5)	56 (61.5)	49 (53.3)	43 (51.2)	63 (59.4)	41 (51.9)
Mean score cases AIMS (SD)	7.5 (3.4)	7.8 (2.7)	9.6 (4.3)	9.6 (4.0)	9.3 (3.8)	9.2 (3.8)	9.9 (4.3)	8.6 (3.2)
Parkinsonism, cases (%)	56 (35.7)	44 (40.0)	37 (31.6)	30 (33.0)	26 (28.3)	23 (27.4)	37 (34.9)	24 (30.4)
Mean score cases motor part UPDRS (SD)	18.6 (10.1)	18.5 (12.2)	17.9 (11.2)	22.4 (9.4)	21.0 (10.2)	22.7 (12.1)	19.1 (12.3)	15.5 (12.1)
Akathisia, cases (%)	16(10.2)	9 (8.2)	15 (12.8)	7 (7.7)	2 (2.2)	5 (6.0)	5 (4.7)	1 (1.3)
Mean score cases item 4 BARS	2.6 (0.8)	2.7 (0.7)	2.8 (0.6)	2.6 (0.8)	2.5 (0.7)	2.6 (0.5)	2.8 (0.8)	3.0

Note: FU: follow-up; FGA: first generations antipsychotic; SGA: second generation antipsychotic; DDD: Defined Daily Dose; AIMS: Abnormal Involuntary Movement Scale; UPDRS: Unified Parkinson Disease Rating Scale; BARS: Barnes Akathisia Rating Scale; AP: antipsychotics; AD: antidepressants; MD: movement disorders; TD: tardive dyskinesia.

^aIn case of missing data about age and MD, no measurement had taken place at the respective FU.

Number of patients alive with missing data: FU1: all variables: *n* = 41; FU2: age and MD *n* = 26, medication: *n* = 27; FU3: all variables: *n* = 45; FU4: age and MD: *n* = 41, medication: *n* = 44; FU5: all variables: *n* = 47; FU6: all variables: *n* = 16; FU7: age: *n* = 18, AP: *n* = 18, AD: *n* = 17; benzodiazepines: *n* = 17; TD: *n* = 18, Parkinsonism: *n* = 18, akathisia: *n* = 19.

^bMeans and SDs in DDD for the patients who used the respective medications are given.

Table 3. Univariate Tests for Possible Predictors of Mortality

Variable	Hazard Ratio	95% Confidence Interval	P Value
Age	1.058	1.038–1.078	.000*
Tardive dyskinesia	1.024	0.981–1.069	.276
Parkinsonism	1.029	1.014–1.045	.000*
Akathisia	0.764	0.475–1.23	.267
DDD antipsychotics	0.727	0.600–0.879	.001*
DDD antidepressants	1.239	0.596–2.58	.566
DDD benzodiazepines	0.813	0.594–1.117	.203
	X ²	df	
Sex	5.62	1	.018*
Type of antipsychotic ^a	7.83	3	.050*

Note: DDD: Defined Daily Dose.

^aType of antipsychotic was one of the following categories: no antipsychotic; first generation antipsychotic(s) (FGA) only; second generation antipsychotic(s)(SGA) only; a combination of FGA and SGA.

*P < .2.

Table 4. Final Cox Proportional Hazards Model

Variable	Hazard Ratio	95% Confidence Interval	P Value
Female sex	1.267	0.742–2.163	.385
Age	0.995	0.937–1.056	.863
Age × time	1.001	0.995–1.007	.765
Age linear-squared	1.002	1.0004–1.0032	.015*
Age linear-squared × time	1.000	0.99975–1.0003	.117
Parkinsonism	1.020	1.001–1.038	.034*
DDD antipsychotics	0.792	0.629–0.997	.047*
DDD antipsychotics linear-squared	1.154	0.993–1.340	.061
No antipsychotic**	0.965	0.318–2.933	.951
FGA only**	0.984	0.442–2.192	.970
Both FGA and SGA**	1.021	0.254–4.104	.976

Note: DDD: Defined Daily Dose; FGA: first generation antipsychotics; SGA: second generation antipsychotics.

*P < .05.

**Reference category: SGA only.

differences with the current study are that the study by Modestin et al. (1) assessed MD only at baseline and (2) had a follow-up of 9 years in contrast with the 24 years of follow-up in the current study. Given the fluctuating nature of MD, assessing MD only at one time might not give enough information to draw conclusions.³³ Measuring MD at multiple time points, as we did in the current study, is probably a more valid design to address this research question. A retrospective study by Schoepf et al.³⁴ examined deaths in schizophrenia patients in general hospitals in relation to mental and physical comorbidity.²⁹ Their results showed an odds ratio of 5.0 for the association between the presence of Parkinsonism and hospital mortality, which can be considered a very strong effect. Parkinsonism though, was not measured

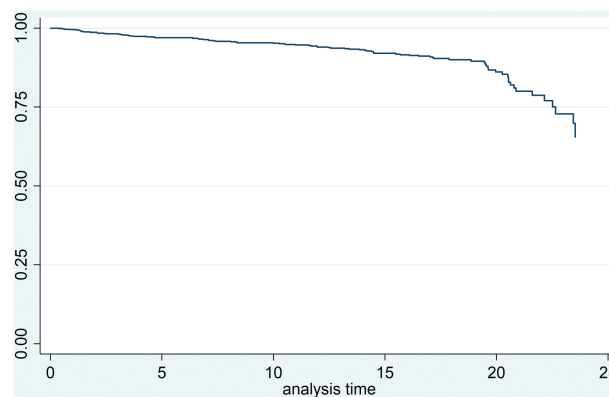


Fig. 1. Survival function adjusted for Parkinsonism, age, and DDD antipsychotics.

with formal rating scales which may have diminished the precision of the effect estimate.

Outside the field of psychiatry, two studies reported an association between Parkinsonism and mortality in people aged 65 years and over.^{30,31} Firstly, in a community sample the presence of Parkinsonism was associated with a twofold increase in the risk of death³⁰ and gait disturbance in particular heightened the risk. Secondly, in a mixed sample of patients with Alzheimer’s disease and subjects without dementia, Parkinsonism was a risk factor for mortality in both subgroups. Interestingly, the latter study focused on spontaneous Parkinsonism as subjects receiving Parkinsonism-inducing medication were excluded which suggest that, along with drug-induced Parkinsonism, spontaneous Parkinsonism may also be a risk factor. Similarly, in Parkinson’s Disease, severity of motor symptoms, especially postural imbalance, and gait disturbance have been found to be associated with mortality.^{35,36}

Considering all these findings of Parkinsonism as a risk factor for mortality in different populations with different underlying causes for Parkinsonian symptoms, it can be hypothesized that Parkinsonism is an independent predictor of all-cause mortality.

It is not directly clear how Parkinsonism increases mortality risk, but Parkinsonism is related to several other factors associated with mortality such as a higher rate of fall incidents and dysphagia which can lead to asphyxia and pneumonia.³⁷ Also it could be hypothesized that the relationship is indirect and, in patients with SMI, might be (partly) based on the association between both spontaneous^{38,39} and drug-induced⁴⁰ Parkinsonism with cognitive impairments. Indeed, cognitive deficits may be related to unhealthy lifestyle or less awareness of physical problems and/or access to physical healthcare. Another explanation may be that Parkinsonism reduces physical activity and increases sedentary behavior,⁴¹ which in turn increase the mortality rate.

Given the high prevalence of Parkinsonism in SMI patients and several studies suggesting that Parkinsonism may lead to shorter survival, it is important to explore

this relationship in more depth, e.g., would reducing Parkinsonism also increase survival?

TD was not significantly associated with risk of death in the present study. Previous studies have reported inconsistent results. Four of eleven studies reported an association between TD and mortality,^{12,15–17} two reported a trend,^{42,43} and five no association.^{18–21,43} In 2000, a meta-analysis by Ballesteros et al. consisting of seven studies demonstrated a significant overall OR of 1.4.¹¹ However, some of the included studies suffered from methodological problems, such as fewer than five years follow-up^{3,4,6,8} and no control for known confounders such as antipsychotic dose.^{15–17,19,42} In 2009, three additional studies on the association between TD and mortality were published using the more sophisticated Cox and logistic regression analyses, which are better suited to this type of data than the Chi-square test^{12,20,21}: (1) Dean and Thuras²⁰ used multiple measurements of TD—although they only identified patients with TD at baseline or TD at any time instead of entering TD as a time-varying covariate—and found a significant association between TD and mortality, which disappeared after adjusting for age and antipsychotic drug use; (2) Modestin et al.²¹ did not find an association; and (3) Chong et al. found an age- and antipsychotic dose-adjusted association with a HR of 1.38 for mild and 1.90 for definite TD which—considering the dose–response effect, represents relatively strong evidence in favor of a real effect of TD on mortality. However, they did not include other MDs and had a relatively short study duration. Evidence shows that severity of TD is positively correlated with symptom severity in schizophrenia^{44,45} which may, therefore, be a confounding factor in the association between TD and survival. Despite this association, none of the studies up to now including the present study, controlled for psychiatric symptom severity which poses a limitation to the findings.

Akathisia did not show a significant association with all-cause mortality which is consistent with the single previous study.²¹

We observed a significant effect for DDD antipsychotics as a linear association and a trend for a linear-quadratic effect, which combined reflects a partially U-shaped curve. Well-known metabolic side effects of predominantly second-generation antipsychotics, and in turn their association with adverse health outcomes like type 2 diabetes and cardiovascular disease has led to many studies addressing the question how (cumulative) exposure to antipsychotics affects mortality.⁴⁶ A robust finding reported by recently published large register-based cohort studies and one systematic review and meta-analysis is that any use is associated with a lower risk compared to no use in schizophrenia.^{7,46–49} One cohort study ($n = 21\,492$), using nation-wide registers in Sweden, investigated cumulative antipsychotic exposure expressed in DDD and mortality. The relation in chronic patients showed a U-shaped curve in which patients who did not use an antipsychotic had the highest risk, followed by the high dose (>1.5 DDD/day), low dose (<0.5 DDD/day)

and moderate dose ($0.5–1.5$ DDD/day) categories. The shape of the curve we found seems somewhat similar. Nonetheless, above-mentioned studies with large numbers of patients, are better powered to give a precise estimate of the relationship.

An important strength of the study is that it was conducted on the former Netherlands Antilles, which, because they are islands, comprise a well-defined catchment area. Along with the fact that the Klinika Capriles is the only psychiatric hospital on the former Netherlands Antilles, and that almost all of the eligible patients agreed to participate (99%), selection bias is relatively small. On the other hand, at the former Netherlands Antilles, stigma on mental disorders is somewhat stronger than in most western countries and patients with mental illness are to a greater extent taken care of by family members. Thus, patients admitted to the Klinika Capriles consisted generally of those with the most severe psychiatric illnesses which is reflected in our sample. Our results can therefore be generalized to populations with severe psychiatric disorders receiving antipsychotic treatment and might not apply to populations with milder illnesses. A further strength arising from the fact that the Klinika Capriles was the only psychiatric facility on the islands is that our data is close to covering the complete treatment history of the participants. Another major strength of the current study is the use of multiple measurements of MD as time-varying covariates. This is especially important given the fluctuating nature of MD in SMI patients.³³ Moreover, the follow-up period of 24 years of the current study is the longest up to now.

Some important factors known to influence mortality were not measured, including access to and adequate use of physical healthcare and metabolic parameters. Indeed one would have to include these variables if the aims were to build a prediction model for mortality. Our aim, however, was to estimate the association of MD and mortality and because the variables mentioned above are not directly related to MD we think that omitting these variables does not bias our results. In contrast, other factors, i.e. symptom severity,⁴⁴ cognitive functioning,^{38–40,50} physical activity,⁴¹ use of alcohol, illicit drug use,⁵¹ and smoking⁵² have been found to be related to both MD and mortality and the lack of information on those variables puts a limitation to the present findings.

Nevertheless, given the effect size we found for the association between Parkinsonism and mortality, combined with other reports of this association, we think evidence points toward Parkinsonism as a risk factor. This could be confirmed in large well controlled studies with multiple measurements over time with regard to MD, use of psychotropic medication, symptom severity, cognitive functioning, physical activity, smoking, use of alcohol, and illicit drug use. Such studies may give more insight how these variables are interrelated and influence mortality.

Conclusion

In conclusion, Parkinsonism was a significant risk factor for mortality in a cohort of patients with SMI. An increase of 10 points (equals one SD) increased the HR of mortality with 21%. TD and akathisia did not show an association with mortality. To study the complex interplay between MD and mortality more well-controlled follow-up studies are needed. With the knowledge that antipsychotics differ in their potency to induce Parkinsonism, an intervention study is of great clinical importance to find out whether treatment or prevention of Parkinsonism can reduce mortality.

Funding

The Curacao Extrapyramidal Syndromes Studies were supported by a grant from the NASKHO (National Antilles Foundation for Clinical Higher Education).

Supplementary Material

Supplementary material is available at <https://academic.oup.com/schizophreniabulletin/>.

References

- Martin LJ, McClean G, Park J, et al. Impact of socioeconomic deprivation on rate and cause of death in severe mental illness. *BMC Psychiatry*. 2014;14:261–270.
- Chang C-K, Hayes RD, Broadbent M, et al. All-cause mortality among people with serious mental illness (SMI), substance use disorders, and depressive disorders in southeast London: a cohort study. *BMC Psychiatry*. 2010;10:77–83.
- Laursen TM. Life expectancy among persons with schizophrenia or bipolar affective disorder. *Schizophr Res*. 2011;131(1–3):101–104.
- Saha S, Chant D, McGrath J. A systematic review of mortality in schizophrenia: is the differential mortality gap worsening over time? *Arch Gen Psychiatry*. 2007;64(10):1123–1131.
- Lomholt LH, Andersen DV, Sejrsgaard-Jacobsen C, et al. Mortality rate trends in patients diagnosed with schizophrenia or bipolar disorder: a nationwide study with 20 years of follow-up. *Int J Bipolar Disord*. 2019;7(1):6.
- Crump C, Winkleby MA, Sundquist K, Sundquist J. Comorbidities and mortality in persons with schizophrenia: a Swedish National Cohort Study. *Am J Psychiatry*. 2013;170(3):324–333.
- Tiihonen J, Lönnqvist J, Wahlbeck K, et al. 11-year follow-up of mortality in patients with schizophrenia: a population-based cohort study (FIN11 study). *Lancet*. 2009;374(9690):620–627.
- Crump C, Sundquist K, Winkleby MA, Sundquist J. Comorbidities and mortality in bipolar disorder: a Swedish national cohort study. *JAMA Psychiatry*. 2013;70(9):931–939.
- Heald A, Pendlebury J, Anderson S, et al. Lifestyle factors and the metabolic syndrome in Schizophrenia: a cross-sectional study. *Ann General Psychiatry*. 2017;16(1):12.
- De Hert M, Correll CU, Bobes J, et al. Physical illness in patients with severe mental disorders. I. Prevalence, impact of medications and disparities in health care. *World Psychiatry*. 2011;10:52–77.
- Ballesteros J, Gonzáles-Pinto A, Bulbena A. Tardive dyskinesia associated with higher mortality in psychiatric patients: results of a meta-analysis of seven independent studies. *J Clin Psychopharmacol*. 2000;20(2):188–194.
- Chong S-A, Tay JAM, Subramaniam M, Pek E, Machin D. Mortality rates among patients with schizophrenia and tardive dyskinesia. *J Clin Psychopharmacol*. 2009;29(1):5–8.
- Bakker PR, de Groot IW, van Os J, van Harten PN. Long-stay psychiatric patients: a prospective study revealing persistent antipsychotic-induced movement disorder. *PLoS One*. 2011;6(10):e25588.
- Tenback DE. An epidemiological approach to elucidate dopaminergic mechanisms in tardive dyskinesia in schizophrenia. *University Press Maastricht* 2006.
- Mehta D, Mallya A, Volavka J. Mortality of patients with tardive dyskinesia. *Am J Psychiatry*. 1978;135(3):371–372.
- McClelland HA, Dutta D, Metcalfe A, Kerr TA. Mortality and facial dyskinesia. *Br J Psychiatry*. 1986;148:310–316.
- Yagi G, Takamiya M, Kanba S, Kamijima K. Mortality rate of schizophrenic patients with tardive dyskinesia during 10 years: a controlled study. *Keio J Med*. 1989;38(1):70–72.
- Kucharski LT, Smith JW, Dunn DD. Mortality and tardive dyskinesia. *Am J Psychiatry*. 1979;136(9):1228.
- Yassa R, Mohelsky H, Dimitry R, Schwartz G. Mortality rate in tardive dyskinesia. *Am J Psychiatry*. 1984;141(8):1018–1019.
- Dean CE, Thuras PD. Mortality and tardive dyskinesia: long-term study using the US National Death Index. *Br J Psychiatry*. 2009;194(4):360–364.
- Modestin J, Vogt Wehrli M, Stephan PL, Agarwalla P. Relationship between neuroleptic extrapyramidal syndromes and patients' all-cause mortality. *Pharmacopsychiatry*. 2009;42(02):57–60.
- van Harten PN, Matroos GE, Hoek HW, Kahn RS. The prevalence of tardive dystonia, tardive dyskinesia, parkinsonism and akathisia. The Curaçao Extrapyramidal Syndromes Study: I. *Schizophr Res*. 1996;19:195–203.
- van Harten PN, Hoek HW, Matroos GE, Koeter M, Kahn RS. The inter-relationships of tardive dyskinesia, parkinsonism, akathisia and tardive dystonia: the Curaçao Extrapyramidal Syndromes Study II. *Schizophr Res*. 1997;26(2–3):235–242.
- van Harten PN, Hoek HW, Matroos GE, van Os J. Incidence of tardive dyskinesia and tardive dystonia in African Caribbean Patients on long-term antipsychotic treatment: the Curaçao Extrapyramidal Syndromes Study V. *J Clin Psychiatry*. 2006;67:1920–1927.
- van Harten PN, Hoek HW, Matroos GE, van Os J. Evidence that lithium protects against tardive dyskinesia: the Curaçao Extrapyramidal Syndromes study VI. *Eur Neuropsychopharmacol*. 2008;18(2):152–155.
- van Harten PN, Matroos GE, Van Os J. The course of tardive dystonia in Afro Caribbean patients, a population-based study: the Curaçao extrapyramidal syndromes study: VII. *Schizophr Res*. 2008;98(1–3):79–83.
- Lane RD, Glazer WM, Hansen TE, Berman WH, Kramer SI. Assessment of tardive dyskinesia using the Abnormal Involuntary Movement Scale. *J Nerv Ment Dis*. 1985;173(6):353–357.

28. Schooler NR, Kane JM. Research diagnosis for tardive dyskinesia. *Arch Gen Psychiatry*. 1982;39:486–487.
29. Martínez-Martín P, Gil-Nagel A, Morlán Gracia L, et al. Unified Parkinson disease rating scale characteristics and structure. *Mov Disord*. 1994;9:76–83.
30. Barnes TRE. A rating scale for drug-induced akathisia. *Br J Psychiatry*. 1989;154:672–676.
31. World Health Organization (WHO) Collaborating Centre for Drug Statistics Methodology. 2021. https://www.whooc.no/atc_ddd_index/. Accessed June 15, 2013.
32. Cleves M, Gould W, Gutierrez RG, Marchenko YV. *An Introduction to Survival Analysis using Stata*. 3rd ed. Texas: A Stata Press Publication. StataCorp LP; 2010.
33. Modestin J, Wehrli MV, Stephan PL, Agarwalla P. Evolution of neuroleptic-induced extrapyramidal syndromes under long-term neuroleptic treatment. *Schizophr Res*. 2008;100(1–3):97–107.
34. Schoepf D, Uppal H, Potluri R, Heun R. Physical comorbidity and its relevance on mortality in schizophrenia: a naturalistic 12-year follow-up in general hospital admissions. *Eur Arch Psychiatry Clin Neurosci*. 2014;264(1):3–28.
35. Santos-García D, Suárez-Castro E, Hernandez J, et al. Predictors of mortality in nondemented patients with Parkinson disease: motor symptoms versus nonmotor symptoms. *J Geriatr Psychiatry Neurol*. 2018;31(1):19–26.
36. Forsaa EB, Larsen JP, Wentzel-Larsen T, Alves G. What predicts mortality in Parkinson disease? A prospective population-based long-term study. *Neurology*. 2010;75(14):1270–1276.
37. Kulkarni DP, Kamath VD, Stewart JT. Swallowing Disorders in Schizophrenia. *Dysphagia* 2017;32(4):467–471.
38. Cuesta MJ, Sánchez-Torres AM, García de Jalón E, et al. Spontaneous Parkinsonism is associated with cognitive impairment in antipsychotic-naïve patients with first-episode psychosis: a 6-month follow-up study. *Schizophr Bull*. 2014;40(5):1164–1173.
39. Molina JL, González Alemán G, Florenzano N, et al. Prediction of neurocognitive deficits by Parkinsonian motor impairment in schizophrenia: a study in neuroleptic-naïve subjects, unaffected first-degree relatives and healthy controls from an indigenous population. *Schizophr Bull*. 2016;42(6):1486–1495.
40. Potvin S, Aubin G, Stip E. Antipsychotic-induced parkinsonism is associated with working memory deficits in schizophrenia-spectrum disorders. *Eur Arch Psychiatry Clin Neurosci*. 2015;265(2):147–154.
41. Pieters LE, Deenik J, Tenback DE, van Oort J, van Harten PN. Exploring the relationship between movement disorders and physical activity in patients with schizophrenia: an actigraphy study. *Schizophr Bull*. 2021;47(4):906–914.
42. Youssef HA, Waddington JL. Morbidity and mortality in tardive dyskinesia: associations in chronic schizophrenia. *Acta Psychiatr Scand*. 1987;75(1):74–77.
43. Inada T, Koshiishi M, Ohnishi K, Yagi G. The life expectancy of schizophrenic patients with tardive dyskinesia. *Hum Psychopharmacol Clin Exp*. 1992;7(4):249–254.
44. Tenback DE, van Harten PN, Slooff CJ, van Os J. Worsening of psychosis in schizophrenia is longitudinally associated with tardive dyskinesia in the European Schizophrenia Outpatient Health Outcomes study. *Compr Psychiatry*. 2007;48(5):436–440.
45. Murray RM, Van Os J. Predictors of outcome in schizophrenia. *Journal of clinical psychopharmacology* 1998;18(2 suppl 1):2s–4s.
46. Vermeulen J, van Rooijen G, Doedens P, Numminen E, van Tricht M, de Haan L. Antipsychotic medication and long-term mortality risk in patients with schizophrenia; a systematic review and meta-analysis. *Psychol Med*. 2017;47(13):2217–2228.
47. Torniainen M, Mittendorfer-Rutz E, Tanskanen A, et al. Antipsychotic treatment and mortality in schizophrenia. *Schizophr Bull*. 2014;41(3):656–663.
48. Taipale H, Tanskanen A, Mehtälä J, Vattulainen P, Correll CU, Tiihonen J. 20-year follow-up study of physical morbidity and mortality in relationship to antipsychotic treatment in a nationwide cohort of 62,250 patients with schizophrenia (FIN20). *World Psychiatry*. 2020;19(1):61–68.
49. Tiihonen J, Mittendorfer-Rutz E, Torniainen M, Alexanderson K, Tanskanen A. Mortality and cumulative exposure to antipsychotics, antidepressants, and benzodiazepines in patients with schizophrenia: an observational follow-up study. *Am J Psychiatry*. 2016;173(6):600–606.
50. Aichele S, Cekić S, Rabbitt P, Ghisletta P. Cognition-mortality associations are more pronounced when estimated jointly in longitudinal and time-to-event models. *Front Psychol*. 2021;12(3277):708361.
51. Deik A, Saunders-Pullman R, San Luciano M. Substance abuse and movement disorders: complex interactions and comorbidities. *Curr Drug Abuse Rev*. 2012;5(3):243–253.
52. Decina P, Caracci G, Sandik R, Berman W, Mukherjee S, Scapicchio P. Cigarette smoking and neuroleptic-induced parkinsonism. *Biol Psychiatry*. 1990;28(6):502–508.