

Total daily energy expenditure has declined over the past three decades due to declining basal expenditure, not reduced activity expenditure

Citation for published version (APA):

Speakman, J. R., de Jong, J. M. A., Sinha, S., Westerterp, K. R., Yamada, Y., Sagayama, H., Ainslie, P. N., Anderson, L. J., Arab, L., Bedu-Addo, K., Blanc, S., Bonomi, A. G., Bovet, P., Brage, S., Buchowski, M. S., Butte, N. F., Camps, S. G. J. A., Cooper, J. A., Cooper, R., ... Wong, W. W. (2023). Total daily energy expenditure has declined over the past three decades due to declining basal expenditure, not reduced activity expenditure. *Nature Metabolism*, 5(4), 579-588. <https://doi.org/10.1038/s42255-023-00782-2>

Document status and date:

Published: 01/04/2023

DOI:

[10.1038/s42255-023-00782-2](https://doi.org/10.1038/s42255-023-00782-2)

Document Version:

Publisher's PDF, also known as Version of record

Document license:

Taverne

Please check the document version of this publication:

- A submitted manuscript is the version of the article upon submission and before peer-review. There can be important differences between the submitted version and the official published version of record. People interested in the research are advised to contact the author for the final version of the publication, or visit the DOI to the publisher's website.
- The final author version and the galley proof are versions of the publication after peer review.
- The final published version features the final layout of the paper including the volume, issue and page numbers.

[Link to publication](#)

General rights

Copyright and moral rights for the publications made accessible in the public portal are retained by the authors and/or other copyright owners and it is a condition of accessing publications that users recognise and abide by the legal requirements associated with these rights.

- Users may download and print one copy of any publication from the public portal for the purpose of private study or research.
- You may not further distribute the material or use it for any profit-making activity or commercial gain
- You may freely distribute the URL identifying the publication in the public portal.

If the publication is distributed under the terms of Article 25fa of the Dutch Copyright Act, indicated by the "Taverne" license above, please follow below link for the End User Agreement:

www.umlib.nl/taverne-license

Take down policy

If you believe that this document breaches copyright please contact us at:

repository@maastrichtuniversity.nl

providing details and we will investigate your claim.

Download date: 11 May. 2024

REVIEW

Peripartum and Long-Term Maternal Cardiovascular Health After Preeclampsia

Veronica Giorgione¹*, Gwyneth Jansen²*, Jamie Kitt³*, Chahinda Ghossein-Doha⁴, Paul Leeson⁵, Basky Thilaganathan⁶

ABSTRACT: There is widespread acceptance of the increased prevalence of cardiovascular diseases occurring within 1 to 2 decades in women following a preeclamptic pregnancy. More recent evidence suggests that the deranged biochemical and echocardiographic findings in women do not resolve in the majority of preeclamptic women following giving birth. Many women continue to be hypertensive in the immediate postnatal period with some exhibiting occult signs of cardiac dysfunction. There is now promising evidence that with close monitoring and effective control of blood pressure control in the immediate postnatal period, women may have persistently lower blood pressures many years after stopping their medication. This review highlights the evidence that delivering effective medical care in the fourth trimester of pregnancy can improve the long-term cardiovascular health after a preeclamptic birth.

Key Words: blood pressure ■ cardiovascular diseases ■ cardiovascular risk ■ hypertension ■ pre-eclampsia ■ pregnancy

PERIPARTUM CARDIOVASCULAR HEALTH Magnitude and Time Course of Postnatal Hypertension

The development of chronic hypertension after pregnancies complicated by hypertensive disorders of pregnancies (HDP) explains most of the increased risk of developing cardiovascular diseases (CVD), especially coronary artery disease and heart failure in this cohort of women.¹ This makes the prompt diagnosis and treatment of hypertension in women with a history of HDP a clinical priority. The increased risk of developing chronic hypertension is substantial and occurs much earlier after pregnancies complicated by HDP.^{2,3} In a Danish registry-based cohort study that included 1.5 million primiparous women, the adjusted risk of hypertension was 4 to 10× in women with HDP compared with women with a normotensive pregnancy in the first five years after pregnancy. Notably, the cumulative incidence of hypertension at ten years postpartum was 10% in women aged 20 to 29 years with a previous HDP, which is higher than in women aged 40 to 49 years with previous normotensive pregnancies.³ Furthermore, the earlier the onset and

more severe the HDP, the higher the risk of developing postpartum hypertension.^{3,4}

Recent evidence has shown that the risk of having persistent hypertension is exceptionally high shortly after giving birth with HDP, with about two-thirds of women with a pregnancy complicated by HDP remaining hypertensive at 6 months postpartum.^{5,6} A meta-analysis of postnatal hypertension showed that the odds ratio of postpartum hypertension was 5.42 (95% CI, 3.12–9.41) in the period up to one year and 7.24 (95% CI, 4.44–11.80) between 1 to 2 years after HDP (Figure 1).⁶ Similarly, a recent French National Health Data study demonstrated that the risk for hypertension 3 years following birth was higher after any HDP, even after adjusting for certain pre-existing cardiovascular risk factors, such as age, social deprivation, smoking, etc.⁴ The mechanisms underlying the association between HDP and subsequent development of CVD are highly debated. Preeclampsia and other HDP might contribute independently to the development of postpartum CVD by causing persistent endothelial damage, dysregulation of the renin-angiotensin-aldosterone system, or an enduring high inflammatory state.^{7,8} However, an impaired cardiovascular system might be

Correspondence to: Basky Thilaganathan, Fetal Medicine Unit, Department of Obstetrics and Gynaecology, St George's University Hospitals NHS Foundation Trust, Blackshaw Rd, London SW17 0QT, United Kingdom. Email basky.thilaganathan@nhs.net

*V. Giorgione, G. Jansen, and J. Kitt contributed equally as first authors.

Supplemental Material is available at <https://www.ahajournals.org/doi/suppl/10.1161/HYPERTENSIONAHA.122.18730>.

For Sources of Funding and Disclosures, see page 238.

© 2022 American Heart Association, Inc.

Hypertension is available at www.ahajournals.org/journal/hyp

Nonstandard Abbreviations and Acronyms

ACE	angiotensin-converting enzyme
BP	blood pressure
CVD	cardiovascular diseases
DBP	diastolic BP
HDP	hypertensive disorders of pregnancies
SBP	systolic BP

unmasked by the increased cardiovascular demands required during pregnancy, which functions as a cardiovascular stress test.⁹

Peripartum and Postpartum Echocardiographic Assessment

Profound echocardiographic changes are evident in the majority of pregnant women affected by HDP, and these persist in the postpartum period in a significant proportion of these women (Figure 2). Maternal echocardiography can detect HDP-associated increased left ventricle mass, cardiac remodeling, and diastolic dysfunction.^{5,10–12} Patients with severe or preterm preeclampsia, particularly if they present with dyspnea or signs of volume overload, would probably benefit from an echocardiographic evaluation in the peripartum period to evaluate systodiastolic function. HDP is also the major risk factor for peripartum cardiomyopathy, where women with peripartum cardiomyopathy and preeclampsia exhibit more severe symptoms and signs of heart failure compared to peripartum cardiomyopathy without hypertension.¹³ Also, Vaught et al¹² reported that all women with severe preeclampsia who developed pulmonary edema (10%) had high left ventricular filling pressures assessed by an elevated E/E' (the ratio of E-wave mitral inflow velocity to early diastolic mitral annular velocity) ratio.

Although removal of the placenta at birth is said to cure HDP, the impact of HDP extends well beyond birth, with persistent cardiac remodeling and dysfunction

detectable by postpartum trans-thoracic echocardiography.¹⁴ In a multicenter observational study of 321 women with preterm preeclampsia, 10% of women had a left ventricle ejection fraction <55% or diastolic dysfunction at 6 months postpartum.⁵ Melchiorre et al¹⁵ demonstrated in preeclampsia patients with normal blood pressure (BP) at 1 year after delivery that those with moderate-severe echocardiographic left ventricle anomalies were more likely to develop hypertension at 2 years postpartum (50% risk) in comparison to those with normal or mild left ventricle alterations (3.5% risk). Women with a history of preeclampsia have altered cardiac structure and evidence of diastolic and myocardial dysfunction in the first years after delivery, which may then translate to a trend toward long-term CVD.^{14,16} In preeclampsia, subclinical signs of myocardial dysfunction, such as abnormal global longitudinal strain, might be present long before the onset of the overt cardiac condition after HDP.^{17–20} Women with HDP who develop chronic hypertension within a decade, have shown the most pronounced echocardiographic differences in left ventricular remodeling and diastolic function indices compared with women with only hypertension without previous HDP.²¹ Despite this evidence, there are no recommendations on whether, when, or how often a cardiac evaluation should be carried out after HDP.

New-Onset Postpartum Preeclampsia

A poorly studied complication is new-onset postpartum preeclampsia, defined as new-onset hypertension (systolic BP [SBP] ≥ 140 mm Hg or diastolic BP [DBP] ≥ 90 mm Hg) and end-organ involvement or severe new-onset hypertension (SBP ≥ 160 mm Hg or DBP ≥ 110 mm Hg) 48 hours to 6 weeks after delivery in the absence of other identifiable causes.²² Its incidence varies considerably among studies (0.3%–27.5%) and only in 40% of cases there is a diagnosis of HDP.^{23,24} Preexisting maternal cardiovascular risk factors for postpartum preeclampsia are similar to those for antepartum preeclampsia and both conditions share the finding of an

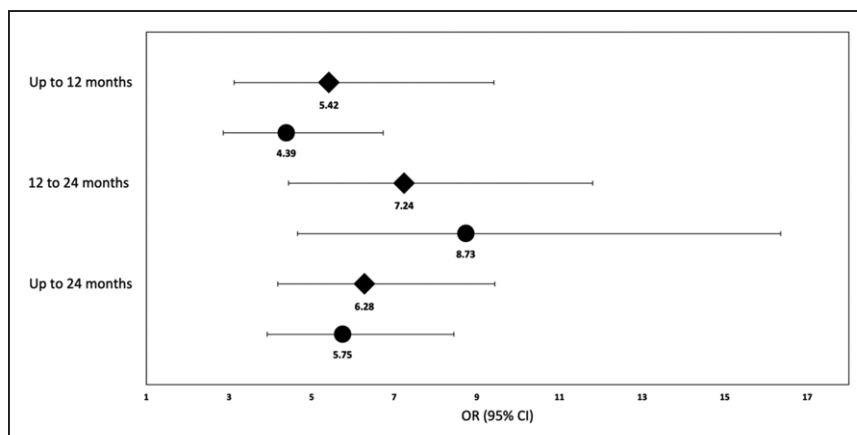


Figure 1. Risk of postnatal hypertension within 2 years of delivery after hypertensive disorders of pregnancy including (♦) or excluding (●) women with preexisting chronic hypertension.

OR indicates odds ratio. Adapted from Giorgione et al.⁶

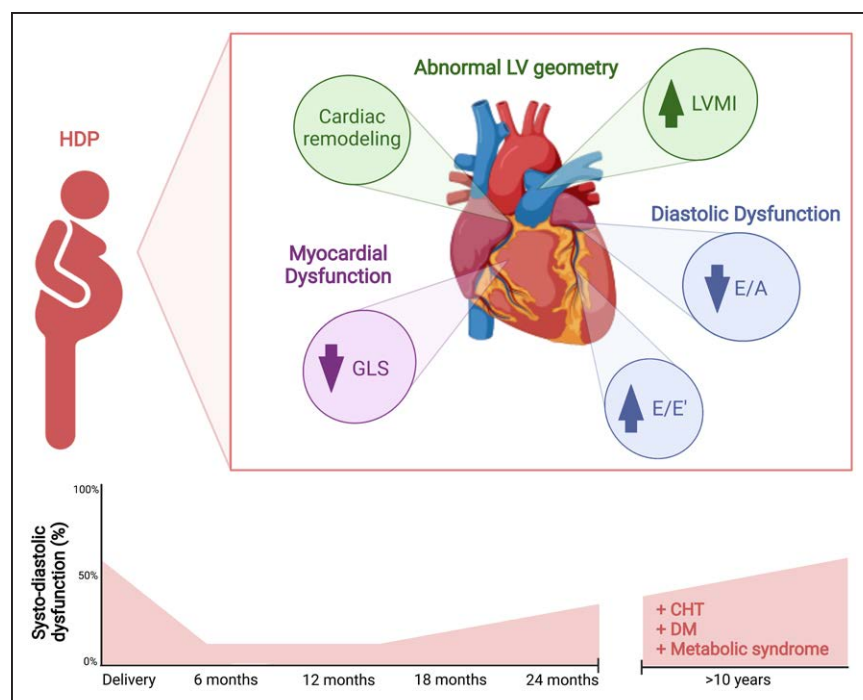


Figure 2. Cardiac changes in pregnancies complicated by hypertensive disorders of pregnancy during pregnancy and throughout the postpartum.

CHT indicates chronic hypertension; DM diabetes; E/E', the ratio of E-wave mitral inflow velocity to early diastolic mitral annular velocity (E'); E/A, the ratio of E-wave mitral inflow velocity to A-wave mitral inflow velocity; GLS global longitudinal strain; LV left ventricle; and LVMI left ventricular mass index.

antiangiogenic imbalance in the maternal circulation.^{25,26} Postpartum preeclampsia challenges the paradigm that removing the placenta at birth cures HDP and brings into question the role of the placenta as the undisputed trigger for HDP.²⁷ Postpartum preeclampsia is often underdiagnosed, as BP monitoring in the fourth trimester is not universally recommended for women without HDP and only infrequently undertaken after HDP.²⁸ The most common presenting symptoms of postpartum preeclampsia are neurological (eg, headache) or signs of volume overload.^{22,28} Due to underdiagnosis, women who develop postpartum preeclampsia are at increased risk of severe maternal morbidity, particularly eclampsia and stroke.²⁹ Current studies on long-term cardiovascular risk after HDP have not reported the onset of postpartum preeclampsia, and as a result, there is a paucity of epidemiological data on new-onset postpartum preeclampsia and future risk of CVD.²² After delivery, women should be informed on how to recognize symptoms of postpartum preeclampsia. Although risk factors for postpartum cardiovascular morbidity could be identified at the time of discharge, their effectiveness in identifying subsequent disease is unknown.³⁰ A predictive model based on these risk factors would be invaluable in tailoring postpartum follow-up for women at risk of severe maternal morbidities.

Factors That Influence Persistent Postpartum Cardiovascular Dysfunction

HDP and CVD share common pathophysiological pathways and processes which may explain their close and dose-dependent association.³¹ These findings have led

to the acknowledgment of HDP as a crucial female-specific risk factor for CVD later in life.^{32–34} However, there is no consensus regarding optimal screening, prevention, and managing CVD risk after HDP.³⁵ In addition, not all women who experience HDP develop CVD in later life, indicating different levels of future risk.^{36,37} Epidemiological studies have shown that the severity of HDP, the need for preterm birth for HDP, and other obstetric complications might help identify women at increased risk of CVD.^{38,39} In addition, early-life factors of women with HDP, such as being born preterm or small-for-gestational-age themselves, are associated with increased cardiovascular risk, early-onset high BP, and cardiovascular dysfunction.⁴⁰

Better cardiovascular health in early pregnancy, defined by markers such as BP, lipid profile, and glucose, has been associated with better pregnancy and postpartum cardiovascular outcomes in women with HDP.^{41,42} Imbalances in circulating angiogenic factors, such as sFlt-1 (soluble fms-like tyrosine kinase 1) and its ligand placental growth factor (PlGF), are considered responsible for maternal signs and symptoms of preeclampsia as it induces microangiopathy in target organs and also vascular remodeling in coronary artery disease or heart failure.^{43,44} Higher sFlt-1 levels are associated with cardiovascular dysfunction during pregnancy and increased sFlt-1/PlGF ratio in HDP was associated with postpartum hypertension.^{25,45} Moreover, lower PlGF concentrations in HDP have been associated with worse cardiac structure, increased BP levels, and higher lipid levels in the postpartum follow-up.^{46,47} In one small study of echocardiographic variables at the time of preeclampsia diagnosis, women who were hypertensive 4 years postpartum

had significantly thicker left ventricle posterior walls on their initial antenatal echocardiogram.⁴⁸

Prediction Models for Postpartum Cardiovascular Dysfunction

Women with a history of preeclampsia, have an elevated Framingham risk score compared to those who experienced uncomplicated pregnancies.^{37,49,50} However, adding pregnancy complication history, particularly HDP, in an established cardiovascular risk score did not substantially improve discrimination or reclassification.^{51,52} The incremental information provided by adverse pregnancy outcomes may have been partly captured by any subsequent increases in hypertension, diabetes, and dyslipidemia. Current CVD risk calculators have not been designed to be used in women of reproductive age with a low overall CVD risk, highlighting the urgent need to develop models to assess long-term CVD risk which include sex-specific risk factors, such as HDP. To achieve this, it might be helpful to target prediction of cardiovascular risk factors such as hypertension, diabetes, and dyslipidemia instead of CVD that occurs several decades after HDP. Indeed, hypertension and obesity are essential targets for cardiovascular prevention in women after HDP because they explain most of the excess risk of CVD in women with a history of HDP.

LONG-TERM MATERNAL HEALTH AFTER PREECLAMPSIA

Cardiovascular Disease Mortality and Hospitalization

There is an abundance of evidence demonstrating the development of CVD and its risk factors after preeclampsia pregnancy (Table 1 and Table S1), and recent meta-analyses that suggest CVD morbidity and mortality increase throughout the lifetime.^{53,54} The most recent meta-analysis of over 10 million women showed that the overall risk of composite adverse CVD outcomes in the decade after birth is 2-times higher for women who had experienced a preeclampsia pregnancy

compared with those who had uncomplicated pregnancies.⁵³ Consistent with this association, Langlois et al⁵⁵ showed a 17% increased risk of hospitalization for CVD after preeclampsia compared to uncomplicated pregnancies and this finding seems to extend throughout lifetime and includes an increased risk of all-cause mortality. However, specific CVD mortality studies show that a history of preeclampsia increases risk of dying 2- to 5-fold from CVD regardless of follow-up time.^{56–59} Preeclampsia appears to increase the long-term risk of cardiovascular morbidity and mortality throughout the lifetime.

Influence of Preeclampsia on the Future Development of Conventional CVD Risk Factors

Preeclampsia is associated with increased long-term development of conventional CVD risk factors with hypertension appearing to be most prominent.⁶⁰ At >10 years after a preeclampsia pregnancy, hypertension occurs roughly 2× to 4× more frequently than after uncomplicated pregnancies.^{58,61} Ghossein-Doha et al⁶² show that 8% of women who were normotensive at 6 weeks following a preeclampsia birth were hypertensive at 6 years and that most women who were hypertensive postpartum, remained hypertensive at 6 years. The average mean difference for total cholesterol is higher after preeclampsia but does not necessarily lead to dyslipidemia.^{54,60} Dyslipidemia may occur 2× more frequently, but there is no apparent correlation with cholesterol level.^{47,61,63} Although one study demonstrated a 15.6% prevalence of metabolic syndrome within 1 year following preeclampsia, this finding is not supported by subsequent smaller studies.^{47,64,65} There is a mixed picture as to whether preeclampsia increases the risk of developing type 2 diabetes mellitus with increased risk being evident with longer-term follow-up up to 35 years.⁵³

Atherosclerotic disease

Placental decidual vasculopathy in preeclampsia has a similar pathophysiological process to atherosclerosis—leading to the hypothesis that preeclampsia could induce development of systematic atherosclerosis at

Table 1. Table Summarizing the Most Recent Key Literature Indicating the Risk (Based on HRs) of Developing Various Types of CVD Split by Number of Years After Preeclampsia

Years after PE	CVD hospitalization	CVD mortality	All-cause mortality	Hypertension	Dyslipidemia	Metabolic syndrome	Type 2 diabetes mellitus	Ischemic heart disease	Stroke	Heart failure	Dysrhythmia	CKD	ESRD	Peripheral artery disease	Dementia
5–10		++	++	+++		+++		++	+	++	+	+		+	
10–20	+			+++		++		+	+	+/–	+/–	+	+++	+	
>20	++	++	+/–	+	+		+	+	+/–	+	+	+			++

Citations to support level of risk are shown in the Table S1. +/– denotes risk may not be raised. + denotes mildly increased risk (HR<2 in most studies). ++ denotes moderately increased risk (HR>2 in most studies). +++ denotes markedly increased risk (HR>3 in most studies). CKD indicates chronic kidney disease; CVD, cardiovascular disease; ESRD, end-stage renal disease; HR, hazard ratio; and PE, preeclampsia.

an accelerated rate leading to an increased incidence of CVD.⁶⁶ This is supported by a national registry study with 50-year follow-up showing a 50% increase in risk of atherosclerotic events after preeclampsia.⁶⁷ Computed tomography angiography has also demonstrated subclinical coronary atherosclerosis in 30% of 45- to 55-year-old women consistent with a systematic review of 7 studies showing a 50% increase in coronary artery disease.^{38,68} In addition to coronary events, a meta-analysis including nine studies demonstrated a 40% increased risk of developing a stroke after preeclampsia. Preeclampsia may also affect cerebral microvasculature with evidence at 5 to 10 years that cerebral white matter lesions related to microvascular disease occur more frequently.^{69,70} Although most long-term studies did not demonstrate an increased risk of developing dementia, the largest study with 283902 participants showed a significant 6-fold increased risk for vascular dementia specifically.⁷¹

Heart Failure and Arrhythmia

Heart failure and related hospital admissions are increased 2-fold after preeclampsia pregnancy, with hypertension being the key determinant driving cardiac dysfunction.^{17,64} This finding is echoed in a study of 1303365 women followed up for an average of 10 years with a 2-fold hazard ratio.⁵⁸ There is also an increased risk of dysrhythmias after preeclampsia, but this relationship is no longer evident when adjusted for confounding factors such as diabetes, hypertension, and renal disease.⁵⁵

Renal Dysfunction

There is robust evidence of a 5-fold increase in the risk of developing end-stage renal disease after preeclampsia.⁷² In contrast, there is a few data on the development of chronic kidney disease with one study showing a 4-fold increase in risk for hypertensive and diabetic chronic kidney disease and a 2-fold increase for glomerular/proteinuric chronic kidney disease at 20 years following a preeclampsia pregnancy.⁷³

POSTPARTUM MONITORING AND MANAGEMENT

BP Pattern During Pregnancy and the Puerperium

Identifying these longitudinal BP patterns is vital to our understanding of maternal cardiovascular adaptation in HDP and to shaping postpartum treatments to reduce cardiovascular morbidity. A recent retrospective cohort study of almost 1000 women with HDP⁷⁴ showed a decrease of 3.5 mmHg in SBP and 4.4 mmHg in DBP

during the first trimester so that BP was below preconception levels, with a very small drop from 1st to 2nd trimester similar to a normal pregnancy.⁷⁵ SBP subsequently peaks on the day of the delivery and then reached similar highs up to day 5, whereas DBP peaks later at 5 to 7 days postpartum. SBP gradually decreased and fell below the preconception level by day 15 postpartum, but DBP falls more gradually not reaching preconception level until 6 weeks postpartum. Therefore, before the typical 7- to 10-day routine postpartum medical check, BP varies significantly, and this is when cardiovascular morbidities typically occur.

What Is the Long-Term BP Course Following Hypertensive Pregnancy?

Many argue that HDP is not causal in accelerating cardiovascular risks but, rather is a marker of a preexisting subclinical disease. These conclusions are supported by the longitudinal follow-up of the Trøndelag Health Study (HUNT) 1, 2, and 3, population-based, open cohort studies from 21 years before pregnancy up to 41 years after a women's first delivery. This cohort contains 22,308 normotensive women, 1092 of whom developed preeclampsia and 478 of whom developed gestational hypertension.⁷⁶ The HUNT studies demonstrate that BP trajectories remain higher in the HDP cohort compared to normotensive women, and that progression of cardiovascular risk factors to 60 years of age occurs in parallel for women with and without a history of HDP, with greater increases in systolic BP and adiposity in HDP women. However, the data does highlight that the diastolic BP does not return to 'normal' postpartum in the HDP cohort—a finding not explained by differences before pregnancy. Without intervention, BP can remain unstable for up to 50% of women for several months after HDP, and it may well be that uncontrolled BP in the puerperium directly affects cardiac and vascular remodeling, known to occur in the weeks after a hypertensive pregnancy in both mother and child.⁷⁷

Optimal Measurement of BP

Hypertension is largely identified during routine annual checks or opportunistically assessing BP in a primary care setting. However, between 1 out of 3 and 1 out of 2 of hypertensive patients remain undiagnosed, indicating the need for better screening.⁷⁸ UK guidance for hypertension in pregnancy makes no specific recommendation, but the general adult guidance⁷⁹ recognizes the value of home BP monitoring and 24-hour ambulatory BP monitoring.⁸⁰ Trials of self-monitoring outside of pregnancy, repeatedly show it can improve BP control, and it is an increasingly common part of hypertension management. It is well tolerated by patients and is a better predictor of end-organ damage than clinic measurement.⁸¹ In 2018, the efficacy of self-monitored blood pressure, with or

without telemonitoring, for titration of antihypertensive medication (TASMINH4) randomized trial⁸² showed that using self-monitored BP to titrate antihypertensives achieved better BP control when using telemonitoring. Trials have now shown that telemonitoring postpartum is also safe and effective when compared with standard care, with 8-fold fewer hypertension-related readmissions.⁸³ The role of home BP monitoring, which is both liked by patients, widely available, practical, and cost-effective makes this an attractive option for facilitating postpartum BP care.⁸⁴ Two recent large trials in the UK (Blood Pressure Monitoring in High Risk Pregnancy to Improve the Detection and Monitoring of Hypertension [BUMP]1 and 2) assessed whether self-monitoring improves the detection or control of hypertension during pregnancy itself^{85,86}. Once a person has been found to have high BP, 24-hour ambulatory BP monitoring is still the most accurate way to diagnose hypertension.^{87,88} The BUMP trials demonstrated that remote self-monitoring resulted in equivalent pregnancy outcomes compared with clinic-based BP monitoring in the antenatal and postpartum period. Home telemonitoring following HDPs may also reduce ethnic health disparities in postpartum care. When engaged in a virtual BP monitoring program in one trial, both black and nonblack women demonstrated compliance rates of >90%.⁸⁹

Frequency of BP measurement

In a trial by Hoppe et al,⁸³ severe hypertension (>160/110 mm Hg) occurred in ≈1 in 4 women following discharge, and over half had increased BPs that required treatment after discharge. Systematic reviews show the latency to the first severe hypertension reading, and to the first BP level that necessitated treatment being ≈6 days.⁹⁰ These findings suggest that it is sensible to measure BP for

at least the first ten days postpartum. Given the significant diurnal variation in BP in HDP, with the BP climbing in the afternoon and evening in ≈50% of women, twice daily readings would seem appropriate⁹¹. If the home BP monitoring was timed in the morning and afternoon it would allow early recognition and adjustment in office hours of medication. Frequency could be increased but at the risk of reducing compliance and thus a balanced approach is needed based on the clinical scenario.

Clinical Benefits of Improved-BP Control During the Puerperium

Telemonitoring can be combined with self-titration or self-management, which can take the form of in person, or remote doctor support by telephone, text messages, or an application (app). The Self-management of Post-Natal Hypertension Trial (SNAP-HT) randomized control trial (RCT) compared self-management to usual GP and midwife-led care following HDP.⁹² It allowed women to self-monitor their BP and provided self-management via remote medication advice feedback (Table 2). The results demonstrated the technique was acceptable; women self-monitored daily with 85% adherence, a median accuracy of 94%, and there was a significant improvement in BP control. Not surprisingly, BP control was better while on treatment with the difference most marked at 6 weeks, but another striking finding was the diastolic BP being a mean 4.5 mmHg lower 6 months postpartum, long after stopping medication. The SNAP-HT Extension at four years postpartum went on to demonstrate that DBP was >7 mmHg lower in those originally randomized to postpartum BP self-management versus those treated with standard care (Figure 3)⁹³. This work suggests there is a window to optimize

Table 2. Traffic-Light System to Guide Frequency of Blood Pressure Readings Postpartum or Women With HDP While on Anti-hypertensive Treatment

Color	Level	BP	Action
Red	Very high	SBP ≥160 or DBP ≥110	Repeat BP in 5 min.
			If this is a repeat reading: contact local maternity unit immediately for an urgent (same-day) assessment.
Orange	High	SBP 150–159 or DBP 100–109	Repeat BP in 5 min.
			If this is a repeat reading: call from study physician 9–5 PM and to see own GP/midwife for an urgent (same-day) appointment.*
Yellow	Raised	SBP 140–149 or DBP 90–99	No action
Green	High normal	SBP 130–139 or DBP 80–89	No action
Blue	Low normal	SBP 100–129 and DBP <80	Switch to twice daily readings and if in this zone for 2 consecutive days, medication titration will be signed off by study doctor, and instructions sent via app to participant
Purple	Low	SBP <100 and DBP <80	Repeat BP in 5 min.
			If this is a repeat reading: option of opting for a call from study physician 9–5 PM vs opting to see own GP/midwife for an urgent appointment.*

No action prompts an app notification to continue daily readings.⁹⁵ App indicates application; BP, blood pressure; DBP, diastolic BP; GP, general practitioner; HDP, hypertensive disorders of pregnancies; and SBP, systolic BP.
*Switch to twice daily readings until back in yellow/green.

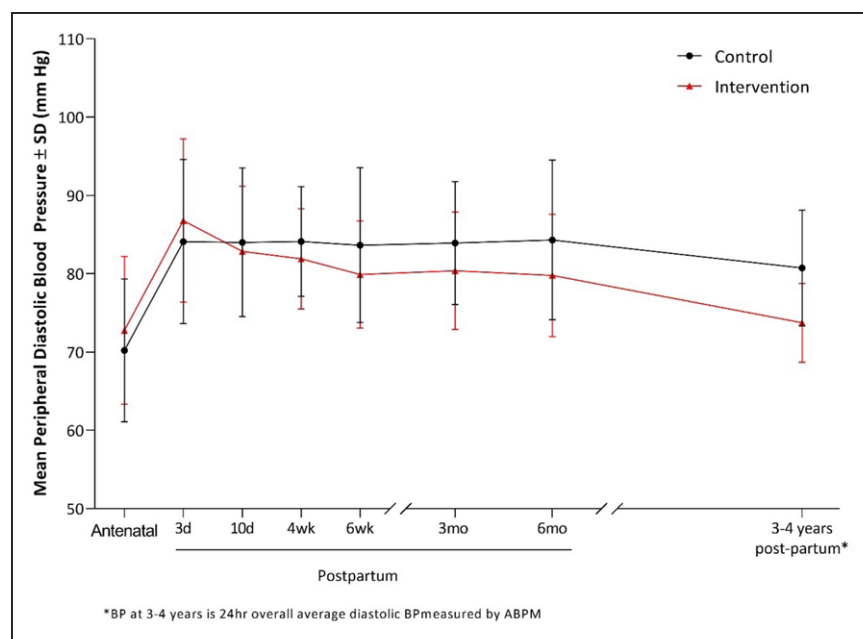


Figure 3. Longitudinal diastolic blood pressure (BP) trajectories from Self-management of Post-Natal Hypertension Trial (SNAP-HT) into SNAP-HT Extension from antenatal booking blood pressure to 3.6 ± 0.4 years postpartum.

ABPM indicates ambulatory BP monitoring.

long-term cardiovascular risk in the puerperium and if the DBP difference were to be maintained long-term, it correlates to a $\approx 40\%$ lifetime reduction in stroke and 20% lifetime reduction in coronary heart disease risk.⁹⁴

Role for Specific Drug Interventions in the Postpartum Period

Beyond the American Heart Association recommendation of incorporating HDPs as a risk-enhancing factor to guide statin prescribing, no other specific guidelines exist to direct screening strategies or therapies for long-term cardiovascular risk reduction in these women. The Postnatal Enalapril to Improve Cardiovascular Function Following Preterm Preeclampsia trial (PICK-UP) was a randomized double-blind placebo-controlled feasibility trial of enalapril in the highest risk early-onset preeclampsia group⁹⁶. At randomization, 88% of women had diastolic dysfunction and 68% had concentric remodeling/hypertrophy. There was no difference in the primary outcome (total vascular resistance) at 6 months postpartum but women treated with enalapril had significantly better diastolic function at 6 months than those treated with placebo, as measured by E/E'. Enalapril use was also associated with improved LV remodeling at 6 months as well as a significant improvement in DBP in the intervention arm. A second RCT specifically assessed the role of targeted calcium therapy in the puerperium, as part of a subgroup analysis of the WHO Calcium and preeclampsia study. Recruitment fell short of the sample size needed in the power calculation, but there was a statistically significant reduction in DBP in the subgroup of women who had a pregnancy previously affected by severe preeclampsia.⁹⁷ Another

RCT in just under 400 women of a 5-day course of 20 mg oral furosemide versus placebo in women with HDP demonstrated a 60% reduction in the prevalence of persistently elevated BP at 7 days in the furosemide group.⁹⁸ American Heart Association/American College of Cardiology guidelines encourage statin use in women with prior HDP⁹⁹ and intermediate calculated 10-year atherosclerotic cardiovascular disease risk, although no trials to date have specifically evaluated the role of statins in cardiovascular and cerebrovascular risk reduction after HDP.

Optimal Postpartum Treatment Regimen

Larger validation studies of BP self-management are ongoing at present with mechanistic evaluation of peripheral resistance, cardiac output and function at rest, and on exercise.⁹⁵ This will hopefully help us answer the question of what is the optimal treatment regime, but there is no doubt there is a role for self-monitoring, self-management, and ACE (angiotensin-converting enzyme) inhibitors in the future of postpartum BP treatment.^{83,96,100}

CONCLUSION AND FUTURE DIRECTIVES

HDP have a more immediate and detrimental impact on maternal cardiovascular health than previously known. These observations hold irrespective of whether these findings preceded the pregnancy or were caused by HDP. It is evident that maternal home BP monitoring self-monitoring combined with effective BP control in the immediate postpartum period is associated with long-term benefits to the mother including an increased likelihood of normotension off medication. The evidence

that effective care may increase the likelihood that women may be more likely to be normotensive off BP medication long-term deserves closer attention. Heightened awareness of these findings should drive increased research into clarifying the optimal BP measurement method and frequency as well as the appropriate treatment regimen with allied self-titration protocols. Improved healthcare delivery in the fourth trimester of pregnancy has important implications for women, clinicians, and public health policy.

ARTICLE INFORMATION

Affiliations

Molecular and Clinical Sciences Research Institute, St. George's University of London, London, United Kingdom (V.G., B.T.). Fetal Medicine Unit, Department of Obstetrics and Gynaecology, St George's University Hospitals NHS Foundation Trust, London, United Kingdom (V.G., B.T.). GROW School for Oncology and Reproduction, Maastricht University, Maastricht, the Netherlands (G.J., C.G.-D.). Department of Cardiology, Zuyderland Medical Centre, Heerlen, the Netherlands (G.J.). Oxford Cardiovascular Clinical Research Facility, Division of Cardiovascular Medicine, Radcliffe Department of Medicine, University of Oxford, Oxford, United Kingdom (J.K., P.L.). CARIM School for Cardiovascular Diseases, Maastricht University, Maastricht, the Netherlands (C.G.-D.).

Acknowledgments

V. Giorgione's PhD is part of the iPLACENTA project, which has received funding from the European Union's Horizon 2020 research and innovation program under the Marie Skłodowska-Curie grant agreement No 765274. J. Kitt's PhD is part of the Self-management of Post-Natal Hypertension Trial (SNAP-HT) Extension and Physician Optimised Post-partum Hypertension Treatment (POP-HT) trials, which have received funding from the British Heart Foundation as part of a clinical research training fellowship. Figure 2 was created with Biorender.com.

Sources of Funding

None.

Disclosures

None.

REFERENCES

- Honigberg MC, Zekavat SM, Aragam K, Klarin D, Bhatt DL, Scott NS, Peloso GM, Natarajan P. Long-term cardiovascular risk in women with hypertension during pregnancy. *J Am Coll Cardiol*. 2019;74:2743–2754. doi: 10.1016/j.jacc.2019.09.052
- Heida KY, Franx A, van Rijn BB, Eijkemans MJ, Boer JM, Verschuren MW, Oudijk MA, Bots ML, van der Schouw YT. Earlier age of onset of chronic hypertension and type 2 diabetes mellitus after a hypertensive disorder of pregnancy or gestational diabetes mellitus. *Hypertension*. 2015;66:1116–1122. doi: 10.1161/HYPERTENSIONAHA.115.06005
- Behrens I, Basit S, Melbye M, Lykke JA, Wohlfahrt J, Bundgaard H, Thilaganathan B, Boyd HA. Risk of post-pregnancy hypertension in women with a history of hypertensive disorders of pregnancy: nationwide cohort study. *BMJ*. 2017;358:j3078. doi: 10.1136/bmj.j3078
- Boucheron P, Lailler G, Moutengou E, Regnault N, Gabet A, Deneux-Tharaux C, Kretz S, Grave C, Mounier-Vehier C, Tsatsaris V, et al. Hypertensive disorders of pregnancy and onset of chronic hypertension in France: the nationwide CONCEPTION study. [published online October 13, 2021]. *Eur Heart J*. doi: 10.1093/eurheartj/ehab686. <https://academic.oup.com/eurheartj/advance-article-abstract/doi/10.1093/eurheartj/ehab686/6395270?redirectedFrom=fulltext>
- McCarthy FP, O'Driscoll JM, Seed PT, Placzek A, Gill C, Sparkes J, Poston L, Marber M, Shennan AH, Thilaganathan B, et al. Multicenter cohort study, with a nested randomized comparison, to examine the cardiovascular impact of preterm preeclampsia. *Hypertension*. 2021;78:1382–1394. doi: 10.1161/HYPERTENSIONAHA.121.17171
- Powe CE, Levine RJ, Karumanchi SA. Preeclampsia, a disease of the maternal endothelium: the role of antiangiogenic factors and implications for later cardiovascular disease. *Circulation*. 2011;123:2856–2869. doi: 10.1161/CIRCULATIONAHA.109.853127
- Hauspurg A, Countouris ME, Jeyabalan A, Hubel CA, Roberts JM, Schwarz EB, Catov JM. Risk of hypertension and abnormal biomarkers in the first year postpartum associated with hypertensive disorders of pregnancy among overweight and obese women. *Pregnancy Hypertens*. 2019;15:1–6. doi: 10.1016/j.preghy.2018.10.009
- Alma LJ, Bokslag A, Maas AHM, Franx A, Paulus WJ, de Groot CJM. Shared biomarkers between female diastolic heart failure and pre-eclampsia: a systematic review and meta-analysis. *ESC Heart Fail*. 2017;4:88–98. doi: 10.1002/ehf2.12129
- Staff AC, Redman CW, Williams D, Leeson P, Moe K, Thilaganathan B, Magnus P, Steegers EA, Tsigas EZ, Ness RB, et al. Global Pregnancy Collaboration (CoLab). Pregnancy and long-term maternal cardiovascular health: progress through harmonization of research cohorts and biobanks. *Hypertension*. 2016;67:251–260. doi: 10.1161/HYPERTENSIONAHA.115.06357
- Castleman JS, Ganapathy R, Taki F, Lip GY, Steeds RP, Kotecha D. Echocardiographic structure and function in hypertensive disorders of pregnancy: a systematic review. *Circ Cardiovasc Imaging*. 2016;9:e004888. doi: 10.1161/CIRCIMAGING.116.004888
- O'Driscoll JM, Giorgione V, Edwards JJ, Wiles JD, Sharma R, Thilaganathan B. Myocardial mechanics in hypertensive disorders of pregnancy: a systematic review and meta-analysis. *Hypertension*. 2022;79:391–398. doi: 10.1161/HYPERTENSIONAHA.121.1
- Vaught AJ, Kovell LC, Szymanski LM, Mayer SA, Seifert SM, Vaidya D, Murphy JD, Argani C, O'Kelly A, York S, et al. Acute cardiac effects of severe pre-eclampsia. *J Am Coll Cardiol*. 2018;72:1–11. doi: 10.1016/j.jacc.2018.04.048
- Davis MB, Arany Z, McNamara DM, Golland S, Elkayam U. Peripartum cardiomyopathy: JACC state-of-the-art review. *J Am Coll Cardiol*. 2020;75:207–221. doi: 10.1016/j.jacc.2019.11.014
- Reddy M, Wright L, Rolnik DL, Li W, Mol BW, La Gerche A, da Silva Costa F, Wallace EM, Palmer K. Evaluation of cardiac function in women with a history of preeclampsia: a systematic review and meta-analysis. *J Am Heart Assoc*. 2019;8:e013545. doi: 10.1161/JAHA.119.013545
- Melchiorre K, Sutherland GR, Liberati M, Thilaganathan B. Preeclampsia is associated with persistent postpartum cardiovascular impairment. *Hypertension*. 2011;58:709–715. doi: 10.1161/HYPERTENSIONAHA.111.176537
- Bokslag A, Franssen C, Alma LJ, Kovacevic I, Kesteren FV, Teunissen PW, Kamp O, Ganzevoort W, Hordijk PL, Groot CJM, et al. Early-onset preeclampsia predisposes to preclinical diastolic left ventricular dysfunction in the fifth decade of life: An observational study. *PLoS One*. 2018;13:e0198908. doi: 10.1371/journal.pone.0198908
- Williams D, Stout MJ, Rosenbloom JL, Olsen MA, Joynt Maddox KE, Deych E, Davila-Roman VG, Lindley KJ. Preeclampsia predicts risk of hospitalization for heart failure with preserved ejection fraction. *J Am Coll Cardiol*. 2021;78:2281–2290. doi: 10.1016/j.jacc.2021.09.1360
- Salas-Pacheco JL, Lomelí-Sánchez O, Baltazar-González O, Soto ME. Longitudinal systolic dysfunction in hypertensive cardiomyopathy with normal ejection fraction. *Echocardiography*. 2022;39:46–53. doi: 10.1111/echo.15267
- Imbalzano E, Zito C, Carerj S, Oreto G, Mandraffino G, Cusmà-Piccione M, Di Bella G, Saitta C, Saitta A. Left ventricular function in hypertension: new insight by speckle tracking echocardiography. *Echocardiography*. 2011;28:649–657. doi: 10.1111/j.1540-8175.2011.01410.x
- Ng ACT, Strudwick M, van der Geest RJ, Ng ACC, Gillinder L, Goo SY, Cowin G, Delgado V, Wang WYS, Bax JJ. Impact of epicardial adipose tissue, left ventricular myocardial fat content, and interstitial fibrosis on myocardial contractile function. *Circ Cardiovasc Imaging*. 2018;11:e007372. doi: 10.1161/CIRCIMAGING.117.007372
- Countouris ME, Villanueva FS, Berlacher KL, Cavalcante JL, Parks WT, Catov JM. Association of hypertensive disorders of pregnancy with left ventricular remodeling later in life. *J Am Coll Cardiol*. 2021;77:1057–1068. doi: 10.1016/j.jacc.2020.12.051
- Hauspurg A, Jeyabalan A. Postpartum preeclampsia or eclampsia: defining its place and management among the hypertensive disorders of pregnancy. *Am J Obstet Gynecol*. 2022;226(2S):S1211–S1221. doi: 10.1016/j.ajog.2020.10.027
- Sibai BM. Etiology and management of postpartum hypertension-preeclampsia. *Am J Obstet Gynecol*. 2012;206:470–475. doi: 10.1016/j.ajog.2011.09.002

24. Al-Safi Z, Imudia AN, Filetti LC, Hobson DT, Bahado-Singh RO, Awonuga AO. Delayed postpartum preeclampsia and eclampsia: demographics, clinical course, and complications. *Obstet Gynecol*. 2011;118:1102–1107. doi: 10.1097/AOG.0b013e318231934c
25. Goel A, Maski MR, Bajracharya S, Wenger JB, Zhang D, Salahuddin S, Shahul SS, Thadhani R, Seely EW, Karumanchi SA, et al. Epidemiology and mechanisms of de novo and persistent hypertension in the postpartum period. *Circulation*. 2015;132:1726–1733. doi: 10.1161/CIRCULATIONAHA.115.015721
26. Ditisheim A, Sibai B, Tatevian N. Placental findings in postpartum preeclampsia: a comparative retrospective study. *Am J Perinatol*. 2020;37:1217–1222. doi: 10.1055/s-0039-1692716
27. Melchiorre K, Giorgione V, Thilaganathan B. The placenta and preeclampsia: villain or victim? *Am J Obstet Gynecol*. 2022;226(2S):S954–S962. doi: 10.1016/j.ajog.2020.10.024
28. Redman EK, Hauspurg A, Hubel CA, Roberts JM, Jeyabalan A. Clinical course, associated factors, and blood pressure profile of delayed-onset postpartum preeclampsia. *Obstet Gynecol*. 2019;134:995–1001. doi: 10.1097/AOG.0000000000003508
29. Wen T, Wright JD, Goffman D, D'Alton ME, Attenello FJ, Mack WJ, Friedman AM. Hypertensive postpartum admissions among women without a history of hypertension or preeclampsia. *Obstet Gynecol*. 2019;133:712–719. doi: 10.1097/AOG.0000000000003099
30. Malhamé I, Danilack VA, Raker CA, Hardy EJ, Spalding H, Bouvier BA, Hurlburt H, Vrees R, Savitz DA, Mehta N. Cardiovascular severe maternal morbidity in pregnant and postpartum women: development and internal validation of risk prediction models. *BJOG*. 2021;128:922–932. doi: 10.1111/1471-0528.16512
31. Suvakov S, Bonner E, Nikolic V, Jerotic D, Simic TP, Garovic VD, Lopez-Campos G, McClements L. Overlapping pathogenic signalling pathways and biomarkers in preeclampsia and cardiovascular disease. *Pregnancy Hypertens*. 2020;20:131–136. doi: 10.1016/j.preghy.2020.03.011
32. Bushnell C, McCullough LD, Awad IA, Chireau MV, Fedder WN, Furie KL, Howard VJ, Lichtman JH, Lisabeth LD, Piña IL, et al; American Heart Association Stroke Council; Council on Cardiovascular and Stroke Nursing; Council on Clinical Cardiology; Council on Epidemiology and Prevention; Council for High Blood Pressure Research. Guidelines for the prevention of stroke in women: a statement for healthcare professionals from the American Heart Association/American Stroke Association. *Stroke*. 2014;45:1545–1588. doi: 10.1161/01.str.0000442009.06663.48
33. Piepoli MF, Hoes AW, Agewall S, Albus C, Brotons C, Catapano AL, Cooney MT, Corrà U, Cosyns B, Deaton C, et al. [2016 European guidelines on cardiovascular disease prevention in clinical practice. The Sixth Joint Task Force of the European Society of Cardiology and Other Societies on Cardiovascular Disease Prevention in Clinical Practice (constituted by representatives of 10 societies and by invited experts. Developed with the special contribution of the European Association for Cardiovascular Prevention & Rehabilitation). *G Ital Cardiol (Rome)*. 2017;18:547–612. doi: 10.1714/2729.27821
34. Mosca L, Benjamin EJ, Berra K, Bezanson JL, Dolor RJ, Lloyd-Jones DM, Newby LK, Piña IL, Roger VL, Shaw LJ, et al. Effectiveness-based guidelines for the prevention of cardiovascular disease in women - 2011 Update: A guideline from the American Heart Association. *Circulation*. 2011;123:1243–1262. doi: 10.1161/CIR.0b013e31820faaf8
35. Garovic VD, Dechend R, Easterling T, Karumanchi SA, McMurtry Baird S, Magee LA, Rana S, Vermut JV, August P; American Heart Association Council on Hypertension; Council on the Kidney in Cardiovascular Disease, Kidney in Heart Disease Science Committee; Council on Arteriosclerosis, Thrombosis and Vascular Biology; Council on Lifestyle and Cardiometabolic Health; Council on Peripheral Vascular Disease; and Stroke Council. Hypertension in pregnancy: diagnosis, blood pressure goals, and pharmacotherapy: a scientific statement from the American Heart Association. *Hypertension*. 2022;79:e21–e41. doi: 10.1161/HYP0000000000000208
36. Stone NJ, Smith SC Jr, Orringer CE, Rigotti NA, Navar AM, Khan SS, Jones DW, Goldberg R, Mora S, Blaha M, et al. Managing atherosclerotic cardiovascular risk in young adults: JACC state-of-the-art review. *J Am Coll Cardiol*. 2022;79:819–836. doi: 10.1016/j.jacc.2021.12.016
37. Groenhouf TKJ, Zoet GA, Franx A, Gansevoort RT, Bots ML, Groen H, Lely AT; PREVENT Group. Trajectory of cardiovascular risk factors after hypertensive disorders of pregnancy. *Hypertension*. 2019;73:171–178. doi: 10.1161/HYPERTENSIONAHA.118.11726
38. Grandi SM, Filion KB, Yoon S, Ayele HT, Doyle CM, Hutcheon JA, Smith GN, Gore GC, Ray JG, Nerenberg K, et al. Cardiovascular disease-related morbidity and mortality in women with a history of pregnancy complications. *Circulation*. 2019;139:1069–1079. doi: 10.1161/CIRCULATIONAHA.118.036748
39. Parikh NI, Gonzalez JM, Anderson CAM, Judd SE, Rexrode KM, Hlatky MA, Gunderson EP, Stuart JJ, Vaidya D; American Heart Association Council on Epidemiology and Prevention; Council on Arteriosclerosis, Thrombosis and Vascular Biology; Council on Cardiovascular and Stroke Nursing; and the Stroke Council. Adverse pregnancy outcomes and cardiovascular disease risk: unique opportunities for cardiovascular disease prevention in women: a scientific statement from the American Heart Association. *Circulation*. 2021;143:e902–e916. doi: 10.1161/CIR.0000000000000961
40. Frost AL, Suriano K, Aye CYL, Leeson P, Lewandowski AJ. The immediate and long-term impact of preeclampsia on offspring vascular and cardiac physiology in the preterm infant. *Front Pediatr*. 2021;9:625726. doi: 10.3389/fped.2021.625726
41. Benschop L, Schalekamp-Timmermans S, Schelling SJC, Steegers EAP, Roeters van Lennep JE. Early pregnancy cardiovascular health and subclinical atherosclerosis. *J Am Heart Assoc*. 2019;8:e011394. doi: 10.1161/JAHA.118.011394
42. Catov JM, McNeil RB, Marsh DJ, Mercer BM, Bairey Merz CN, Parker CB, Pemberton VL, Saade GR, Chen YI, Chung JH, et al; NHLBI nuMoM2b Heart Health Study. Early pregnancy atherogenic profile in a first pregnancy and hypertension risk 2 to 7 years after delivery. *J Am Heart Assoc*. 2021;10:e017216. doi: 10.1161/JAHA.120.017216
43. Rana S, Burke SD, Karumanchi SA. Imbalances in circulating angiogenic factors in the pathophysiology of preeclampsia and related disorders. *Am J Obstet Gynecol*. 2022;226(2S):S1019–S1034. doi: 10.1016/j.ajog.2020.10.022
44. Ky B, French B, Ruparel K, Sweitzer NK, Fang JC, Levy WC, Sawyer DB, Cappola TP. The vascular marker soluble fms-like tyrosine kinase 1 is associated with disease severity and adverse outcomes in chronic heart failure. *J Am Coll Cardiol*. 2011;58:386–394. doi: 10.1016/j.jacc.2011.03.032
45. Lopes Perdigao J, Chinthala S, Mueller A, Minhas R, Ramadan H, Nasim R, Naseem H, Young D, Shahul S, Chan SL, et al. Angiogenic factor estimation as a warning sign of preeclampsia-related peripartum morbidity among hospitalized patients. *Hypertension*. 2019;73:868–877. doi: 10.1161/HYPERTENSIONAHA.118.12205
46. Benschop L, Schalekamp-Timmermans S, Broere-Brown ZA, Roeters van Lennep JE, Jaddoe VWW, Roos-Hesselink JW, Ikram MK, Steegers EAP, Roberts JM, Gandle RE. Placental growth factor as an indicator of maternal cardiovascular risk after pregnancy. *Circulation*. 2019;139:1698–1709. doi: 10.1161/CIRCULATIONAHA.118.036632
47. Garrido-Gimenez C, Mendoza M, Cruz-Lemini M, Galian-Gay L, Sanchez-Garcia O, Granato C, Rodriguez-Sureda V, Rodriguez-Palomares J, Carreras-Moratonas E, Cabero-Roura L, et al. Angiogenic factors and long-term cardiovascular risk in women that developed preeclampsia during pregnancy. *Hypertension*. 2020;76:1808–1816. doi: 10.1161/HYPERTENSIONAHA.120.15830
48. Vaught AJ, Minhas A, Boyer T, Debrosse A, Sharma G, Vaidya D, Ouyang P, Zakaria S, Mukherjee M. Incidence of essential hypertension but not echocardiographic abnormalities at four years with a history of preeclampsia with severe features. *Pregnancy Hypertens*. 2021;25:185–190. doi: 10.1016/j.preghy.2021.06.008
49. Breetveld NM, Ghossein-Doha C, van Kuijk S, van Dijk AP, van der Vlugt MJ, Heidema WM, Scholten RR, Spaanderman ME. Cardiovascular disease risk is only elevated in hypertensive, formerly preeclamptic women. *BJOG*. 2015;122:1092–1100. doi: 10.1111/1471-0528.13057
50. Fraser A, Nelson SM, MacDonald-Wallis C, Cherry L, Butler E, Sattar N, Lawlor DA. Associations of pregnancy complications with calculated cardiovascular disease risk and cardiovascular risk factors in middle age: The avon longitudinal study of parents and children. *Circulation*. 2012;125:1367–1380. doi: 10.1161/CIRCULATIONAHA.111.044784
51. Markovitz AR, Stuart JJ, Horn J, Williams PL, Rimm EB, Missmer SA, Tanz LJ, Haug EB, Fraser A, Timpka S, et al. Does pregnancy complication history improve cardiovascular disease risk prediction? Findings from the HUNT study in Norway. *Eur Heart J*. 2019;40:1113–1120. doi: 10.1093/eurheartj/ehy863
52. Stuart JJ, Tanz LJ, Cook NR, Spiegelman D, Missmer SA, Rimm EB, Rexrode KM, Mukamal KJ, Rich-Edwards JW. Hypertensive disorders of pregnancy and 10-year cardiovascular risk prediction. *J Am Coll Cardiol*. 2018;72:1252–1263. doi: 10.1016/j.jacc.2018.05.077
53. Dall'Asta A, D'Antonio F, Saccone G, Buca D, Mastantuoni E, Liberati M, Flacco ME, Frusca T, Ghi T. Cardiovascular events following pregnancy complicated by pre-eclampsia with emphasis on comparison between early- and

late-onset forms: systematic review and meta-analysis. *Ultrasound Obstet Gynecol.* 2021;57:698–709. doi: 10.1002/uog.22107

54. Veiga ECA, Rocha PRH, Caviola LL, Cardoso VC, Costa FDS, Saraiva MDCP, Barbieri MA, Bettoli H, Cavalli RC. Previous preeclampsia and its association with the future development of cardiovascular diseases: a systematic review and meta-analysis. *Clinics (Sao Paulo).* 2021;76:e1999. doi: 10.6061/clinics/2021/e1999
55. Langlois AWR, Park AL, Lentz EJM, Ray JG. Preeclampsia brings the risk of premature cardiovascular disease in women closer to that of men. *Can J Cardiol.* 2020;36:60–68. doi: 10.1016/j.cjca.2019.06.028
56. Wang YX, Arvizo M, Rich-Edwards JW, Wang L, Rosner B, Stuart JJ, Rexrode KM, Chavarro JE. Hypertensive disorders of pregnancy and subsequent risk of premature mortality. *J Am Coll Cardiol.* 2021;77:1302–1312. doi: 10.1016/j.jacc.2021.01.018
57. Gastrich MD, Zinonos S, Bachmann G, Cosgrove NM, Cabrera J, Cheng JQ, Kostis JB. Preeclamptic women are at significantly higher risk of future cardiovascular outcomes over a 15-year period. *J Womens Health (Larchmt).* 2020;29:74–83. doi: 10.1089/jwh.2019.7671
58. Leon LJ, McCarthy FP, Direk K, Gonzalez-Izquierdo A, Prieto-Merino D, Casas JP, Chappell L. Preeclampsia and cardiovascular disease in a large UK pregnancy cohort of linked electronic health records: a CALIBER study. *Circulation.* 2019;140:1050–1060. doi: 10.1161/CIRCULATIONAHA.118.038080
59. Theilen LH, Fraser A, Hollingshaus MS, Schliep KC, Varner MW, Smith KR, Esplin MS. All-cause and cause-specific mortality after hypertensive disease of pregnancy. *Obstet Gynecol.* 2016;128:238–244. doi: 10.1097/AOG.0000000000001534
60. Alonso-Ventura V, Li Y, Pasupuleti V, Roman YM, Hernandez AV, Pérez-López FR. Effects of preeclampsia and eclampsia on maternal metabolic and biochemical outcomes in later life: a systematic review and meta-analysis. *Metabolism.* 2020;102:154012. doi: 10.1016/j.metabol.2019.154012
61. Garovic VD, White WM, Vaughan L, Saiki M, Parashuram S, Garcia-Valencia O, Weissgerber TL, Milic N, Weaver A, Mielke MM. Incidence and long-term outcomes of hypertensive disorders of pregnancy. *J Am Coll Cardiol.* 2020;75:2323–2334. doi: 10.1016/j.jacc.2020.03.028
62. Ghossein-Doha C, Peeters L, van Heijster S, van Kuijk S, Spaan J, Delhaas T, Spaanderman M. Hypertension after preeclampsia is preceded by changes in cardiac structure and function. *Hypertension.* 2013;62:382–390. doi: 10.1161/HYPERTENSIONAHA.113.01319
63. Stuart JJ, Tanz LJ, Missmer SA, Rimm EB, Spiegelman D, James-Todd TM, Rich-Edwards JW. Hypertensive disorders of pregnancy and maternal cardiovascular disease risk factor development: an observational cohort study. *Ann Intern Med.* 2018;169:224–232. doi: 10.7326/M17-2740
64. Ghossein-Doha C, van Neer J, Wissink B, Breetveld NM, de Windt LJ, van Dijk AP, van der Vlugt MJ, Janssen MC, Heidema WM, Scholten RR, et al. Pre-eclampsia: an important risk factor for asymptomatic heart failure. *Ultrasound Obstet Gynecol.* 2017;49:143–149. doi: 10.1002/uog.17343
65. Hooijschuur MC, Ghossein-Doha C, Al-Nasiry S, Spaanderman ME. Maternal metabolic syndrome, preeclampsia, and small for gestational age infancy. *Am J Obstet Gynecol.* 2015;213:370.e1–370.e7. doi: 10.1016/j.ajog.2015.05.045
66. Stevens DU, de Nobrega Teixeira JA, Spaanderman MEA, Bulten J, van Vugt JMG, Al-Nasiry S. Understanding decidual vasculopathy and the link to preeclampsia: A review. *Placenta.* 2020;97:95–100. doi: 10.1016/j.placenta.2020.06.020
67. Sharma S, Skog J, Timpka S, Ignell C. Preeclampsia and high blood pressure in early pregnancy as risk factors of severe maternal cardiovascular disease during 50-years of follow-up. *Pregnancy Hypertens.* 2021;26:79–85. doi: 10.1016/j.preghy.2021.09.005
68. Zoet GA, Benschop L, Boersma E, Budde RPJ, Fauser BCJM, van der Graaf Y, de Groot CJM, Maas AHEM, Roeters van Lennep JE, Steegers EAP, et al; CREW Consortium. Prevalence of subclinical coronary artery disease assessed by coronary computed tomography angiography in 45- to 55-year-old women with a history of preeclampsia. *Circulation.* 2018;137:877–879. doi: 10.1161/CIRCULATIONAHA.117.032695
69. Wiegman MJ, Zeeman GG, Aukes AM, Bolte AC, Faas MM, Aarnoudse JG, de Groot JC. Regional distribution of cerebral white matter lesions years after preeclampsia and eclampsia. *Obstet Gynecol.* 2014;123:790–795. doi: 10.1097/AOG.000000000000162
70. Aukes AM, de Groot JC, Aarnoudse JG, Zeeman GG. Brain lesions several years after eclampsia. *Am J Obstet Gynecol.* 2009;200:504.e1–504.e5. doi: 10.1016/j.ajog.2008.12.033
71. Andolf EG, Sydsjö GC, Bladh MK, Berg G, Sharma S. Hypertensive disorders in pregnancy and later dementia: a Swedish National Register Study. *Acta Obstet Gynecol Scand.* 2017;96:464–471. doi: 10.1111/aogs.13096
72. Covella B, Vinturache AE, Cabiddu G, Attini R, Gesualdo L, Versino E, Piccoli GB. A systematic review and meta-analysis indicates long-term risk of chronic and end-stage kidney disease after preeclampsia. *Kidney Int.* 2019;96:711–727. doi: 10.1016/j.kint.2019.03.033
73. Barrett PM, McCarthy FP, Evans M, Kubickas M, Perry IJ, Stenvinkel P, Khashan AS, Kubickiene K. Hypertensive disorders of pregnancy and the risk of chronic kidney disease: a Swedish registry-based cohort study. *PLoS Med.* 2020;17:e1003255. doi: 10.1371/journal.pmed.1003255
74. Mukhtarova N, Hetzel SJ, Johnson HM, Hoppe KK. Longitudinal blood pressure patterns of women with hypertensive disorders of pregnancy: preconception through postpartum. *Journal of Maternal-Fetal and Neonatal Medicine.* 2021;1–8. doi: 10.1080/14767058.2021.2012650
75. Green LJ, Mackillop LH, Salvi D, Pullon R, Loerup L, Tarassenko L, Mossop J, Edwards C, Gerry S, Birks J, et al. Gestation-specific vital sign reference ranges in pregnancy. *Obstet Gynecol.* 2020;135:653–664. doi: 10.1097/AOG.00000000000003721
76. Haug EB, Horn J, Markovitz AR, Fraser A, Vatten LJ, Macdonald-Wallis C, Tilling K, Romundstad PR, Rich-Edwards JW, Åsvold BO. Life course trajectories of cardiovascular risk factors in women with and without hypertensive disorders in first pregnancy: the HUNT study in Norway. *J Am Heart Assoc.* 2018;7:e009250. doi: 10.1161/JAHA.118.009250
77. Boardman H, Lamata P, Lazdam M, Verburg A, Siepmann T, Upton R, Bilderbeck A, Dore R, Smedley C, Kenworthy Y, et al. Variations in cardiovascular structure, function, and geometry in midlife associated with a history of hypertensive pregnancy. *Hypertension.* 2020;75:1542–1550. doi: 10.1161/HYPERTENSIONAHA.119.14530
78. Pickering TG, Shimbo D, Haas D. Ambulatory blood-pressure monitoring. *N Engl J Med.* 2006;354:2368–2374. doi: 10.1056/NEJMr060433
79. National Institute of Clinical Excellence (NICE). *Hypertension: Clinical management of primary hypertension in adults*; 2019.
80. National Institute of Clinical Excellence (NICE). *NG133: Hypertension in Pregnancy: Diagnosis and management*; 2019.
81. Tucker KL, Sheppard JP, Stevens R, Bosworth HB, Bove A, Bray EP, Earle K, George J, Godwin M, Green BB, et al. Self-monitoring of blood pressure in hypertension: a systematic review and individual patient data meta-analysis. *PLoS Med.* 2017;14:e1002389. doi: 10.1371/journal.pmed.1002389
82. McManus RJ, Mant J, Franssen M, Nickless A, Schwartz C, Hodgkinson J, Bradburn P, Farmer A, Grant S, Greenfield SM, et al; TASMINH4 investigators. Efficacy of self-monitored blood pressure, with or without telemonitoring, for titration of antihypertensive medication (TASMINH4): an unmasked randomised controlled trial. *Lancet.* 2018;391:949–959. doi: 10.1016/S0140-6736(18)30309-X
83. Hoppe KK, Thomas N, Zernick M, Zella JB, Havighurst T, Kim K, Williams M, Niu B, Lohr A, Johnson HM. Telehealth with remote blood pressure monitoring compared with standard care for postpartum hypertension. *Am J Obstet Gynecol.* 2020;223:585–588. doi: 10.1016/j.ajog.2020.05.027
84. Thomas NA, Drewry A, Racine Passmore S, Assad N, Hoppe KK. Patient perceptions, opinions and satisfaction of telehealth with remote blood pressure monitoring postpartum. *BMC Pregnancy Childbirth.* 2021;21:153. doi: 10.1186/s12884-021-03632-9
85. Tucker KL, Mort S, Yu LM, Campbell H, Rivero-Arias O, Wilson HM, Allen J, Band R, Chisholm A, Crawford C, et al; BUMP Investigators. Effect of self-monitoring of blood pressure on diagnosis of hypertension during higher-risk pregnancy: the BUMP 1 randomized clinical trial. *JAMA.* 2022;327:1656–1665. doi: 10.1001/jama.2022.4712
86. Chappell LC, Tucker KL, Galal U, Yu LM, Campbell H, Rivero-Arias O, Allen J, Band R, Chisholm A, Crawford C, et al; BUMP 2 Investigators. Effect of self-monitoring of blood pressure on blood pressure control in pregnant individuals with chronic or gestational hypertension: the BUMP 2 randomized clinical trial. *JAMA.* 2022;327:1666–1678. doi: 10.1001/jama.2022.4726
87. Mancia G, Fagard R, Narkiewicz K, Redon J, Zanchetti A, Böhm M, Christiaens T, Cifkova R, De Backer G, Dominiczak A, et al. 2013 ESH/ESC guidelines for the management of arterial hypertension: the Task Force for the Management of Arterial Hypertension of the European Society of Hypertension (ESH) and of the European Society of Cardiology (ESC). *Eur Heart J.* 2013;34:2159–2219. doi: 10.1093/eurheartj/ehs151

88. Whelton PK, Williams B. The 2018 European Society of Cardiology/European Society of Hypertension and 2017 American College of Cardiology/American Heart Association Blood Pressure Guidelines: more similar than different. *JAMA*. 2018;320:1749–1750. doi: 10.1001/jama.2018.16755
89. Sawyer MR, Jaffe EF, Naqvi M, Sarma A, Barth WH Jr, Goldfarb IT. Establishing better evidence on remote monitoring for postpartum hypertension: a silver lining of the coronavirus pandemic. *AJP Rep*. 2020;10:e315–e318. doi: 10.1055/s-0040-1715169
90. Magee L, Sadeghi S. Prevention and treatment of postpartum hypertension. *Cochrane Database of Systematic Reviews*. 2005;1:CD004351. doi: 10.1002/14651858.CD004351.pub3
91. Ayala DE, Hermida RC, Mojón A, Fernández JR, Iglesias M. Circadian blood pressure variability in healthy and complicated pregnancies. *Hypertension*. 1997;30(3 Pt 2):603–610. doi: 10.1161/01.hyp.30.3.603
92. Cairns AE, Tucker KL, Leeson P, Mackillop LH, Santos M, Velardo C, Salvi D, Mort S, Mollison J, Tarassenko L, et al; SNAP-HT Investigators. Self-Management of postnatal hypertension: the SNAP-HT trial. *Hypertension*. 2018;72:425–432. doi: 10.1161/HYPERTENSIONAHA.118.10911
93. Kitt JA, Fox RL, Cairns AE, Mollison J, Burchert HH, Kenworthy Y, McCourt A, Suriano K, Lewandowski AJ, Mackillop L, et al. Short-term postpartum blood pressure self-management and long-term blood pressure control: a Randomized Controlled Trial. *Hypertension*. 2021;78:469–479. doi: 10.1161/HYPERTENSIONAHA.120.17101
94. Law MR, Morris JK, Wald NJ. Use of blood pressure lowering drugs in the prevention of cardiovascular disease: meta-analysis of 147 randomised trials in the context of expectations from prospective epidemiological studies. *BMJ*. 2009;338:b1665. doi: 10.1136/bmj.b1665
95. Kitt J, Frost A, Mollison J, Tucker KL, Suriano K, Kenworthy Y, McCourt A, Woodward W, Tan C, Lapidaire W, et al. Postpartum blood pressure self-management following hypertensive pregnancy: protocol of the Physician Optimised Post-partum Hypertension Treatment (POP-HT) trial. *BMJ Open*. 2022;12:e051180. doi: 10.1136/bmjopen-2021-051180
96. Ormesher L, Higson S, Luckie M, Roberts SA, Glossop H, Trafford A, Cottrell E, Johnstone ED, Myers JE. Postnatal enalapril to improve cardiovascular function following preterm preeclampsia (PICK-UP):: a randomized double-blind placebo-controlled feasibility trial. *Hypertension*. 2020;76:1828–1837. doi: 10.1161/HYPERTENSIONAHA.120.15875
97. Sun X, Li H, He X, Li M, Yan P, Xun Y, Lu C, Yang K, Zhang X. The association between calcium supplement and preeclampsia and gestational hypertension: a systematic review and meta-analysis of randomized trials. *Hypertens Pregnancy*. 2019;38:129–139. doi: 10.1080/10641955.2019.1593445
98. Lopes Perdigo J, Lewey J, Hirshberg A, Koelper N, Srinivas SK, Elovitz MA, Levine LD. Furosemide for accelerated recovery of blood pressure postpartum in women with a hypertensive disorder of pregnancy: a randomized controlled trial. *Hypertension*. 2021;77:1517–1524. doi: 10.1161/HYPERTENSIONAHA.120.16133
99. Arnett DK, Khera A, Blumenthal RS. 2019 ACC/AHA guideline on the primary prevention of cardiovascular disease: part 1, lifestyle and behavioral factors. *JAMA Cardiol*. 2019;4:1043–1044. doi: 10.1001/jamacardio.2019.2604
100. Kitt J, Fox R, Tucker KL, McManus RJ. New approaches in hypertension management: a review of current and developing technologies and their potential impact on hypertension care. *Curr Hypertens Rep*. 2019;21:44. doi: 10.1007/s11906-019-0949-4